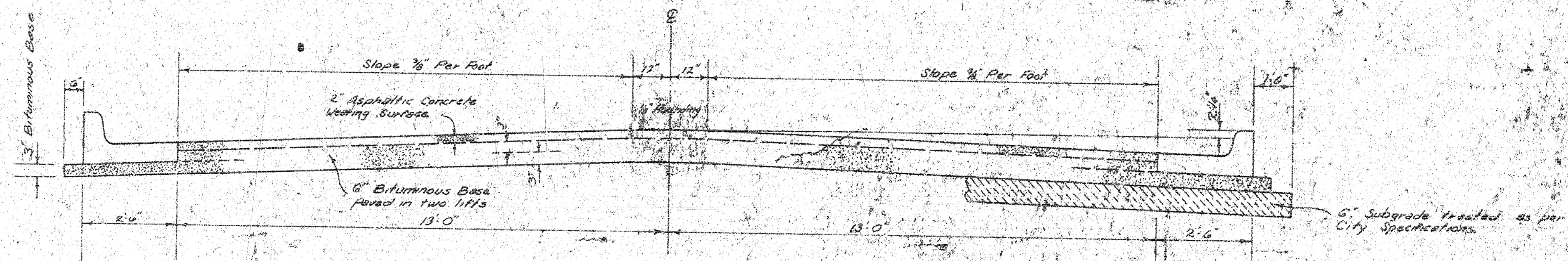


HOOVER AVENUE

S.L. ST. LOUIS TO N.L. NEWELL

Project No. _____ DAKS 576058

472-76-245-80422-000-000-001

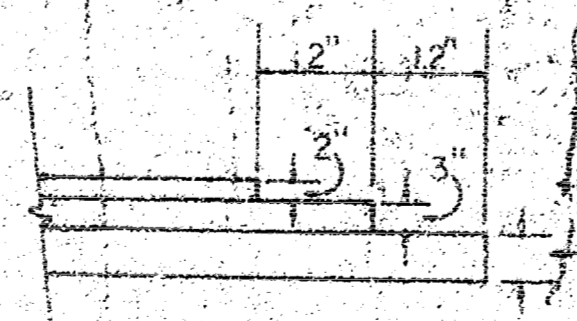


TYPICAL SECTION

3' ASPHALTIC CONCRETE PAVEMENT WITH BITUMINOUS BASE

A TACK COAT OF EMULSIFIED ASPHALT (SS-1H) SHALL BE APPLIED AT AN APPROXIMATE RATE OF 0.05 GALLONS PER SQ. YD. BETWEEN LIFTS OF ASPHALTIC MATERIALS WHEN ORDERED BY THE ENGINEER. TACK COAT WILL NOT BE PAID FOR DIRECTLY AND SHALL BE CONSIDERED AS SUBSIDIARY TO PRICE BID FOR ASPHALTIC PAVEMENT. BITUMINOUS BASE AND ASPHALTIC CONCRETE WEARING SURFACE SHALL BE PLACED WITH A LAYDOWN MACHINE HAVING AUTOMATIC ELECTRONIC CONTROLS FOR CROWN AND GRADE. CONSTRUCTION JOINTS IN EACH LIFT SHALL BE STAGGERED A MINIMUM DISTANCE OF 3' WITH JOINTS IN PRECEDING LIFTS AND SUCH THAT A JOINT WILL BE CONSTRUCTED ON THE PAVEMENT CENTERLINE IN THE TOP LIFT.

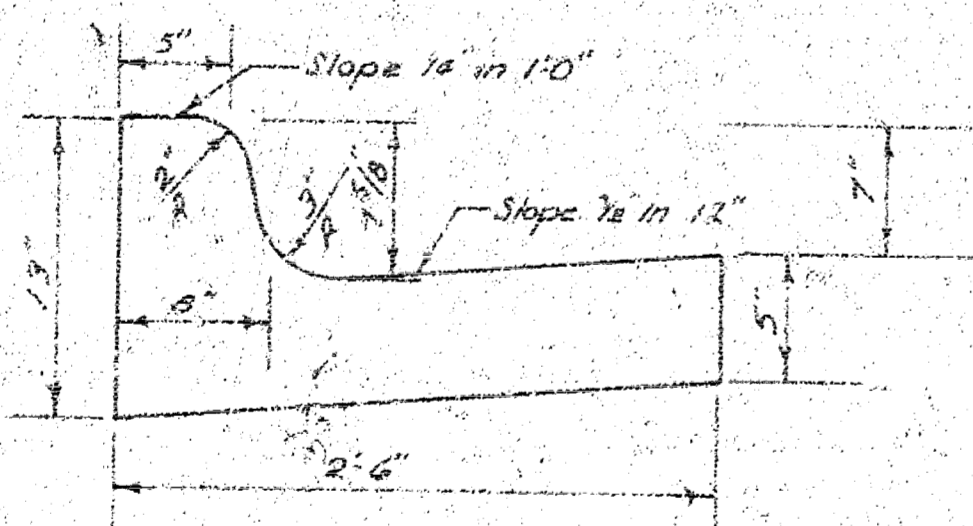
DETAIL OF TRANSVERSE CONSTRUCTION JOINTS



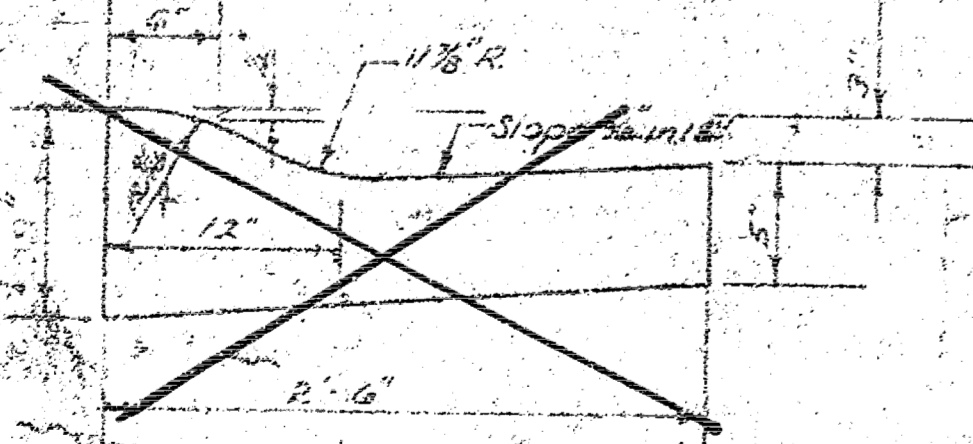
TRANSVERSE CONSTRUCTION JOINTS SHALL BE CONSTRUCTED IN FLEXIBLE BASE PAVEMENTS AT LOCATIONS WHERE PAVEMENT TEMPORARILY ENDS TO FACILITATE FUTURE PAVEMENT CONSTRUCTION AS SHOWN BY DETAIL. THE COST OF CONSTRUCTING THE TRANSVERSE CONSTRUCTION JOINTS SHALL NOT BE MEASURED OR PAID FOR DIRECTLY BUT SHALL BE INCLUDED IN THE BID PRICE FOR SQUARE YARDS OF ASPHALTIC CONCRETE PAVEMENT.

The A.C. pavement between the Comb. Curb & gutter shall be paid as Sec. 16. 2\"/>

COMBINED CURB & GUTTER



ROLL TOP CURB & GUTTER



CITY OF WICHITA, KANSAS

DEPARTMENT OF PUBLIC WORKS -- ENGINEERING

R. W. LINN, CITY ENGINEER

DATE: _____ PROJ. NO. 472-76-245-80422-000-000-001

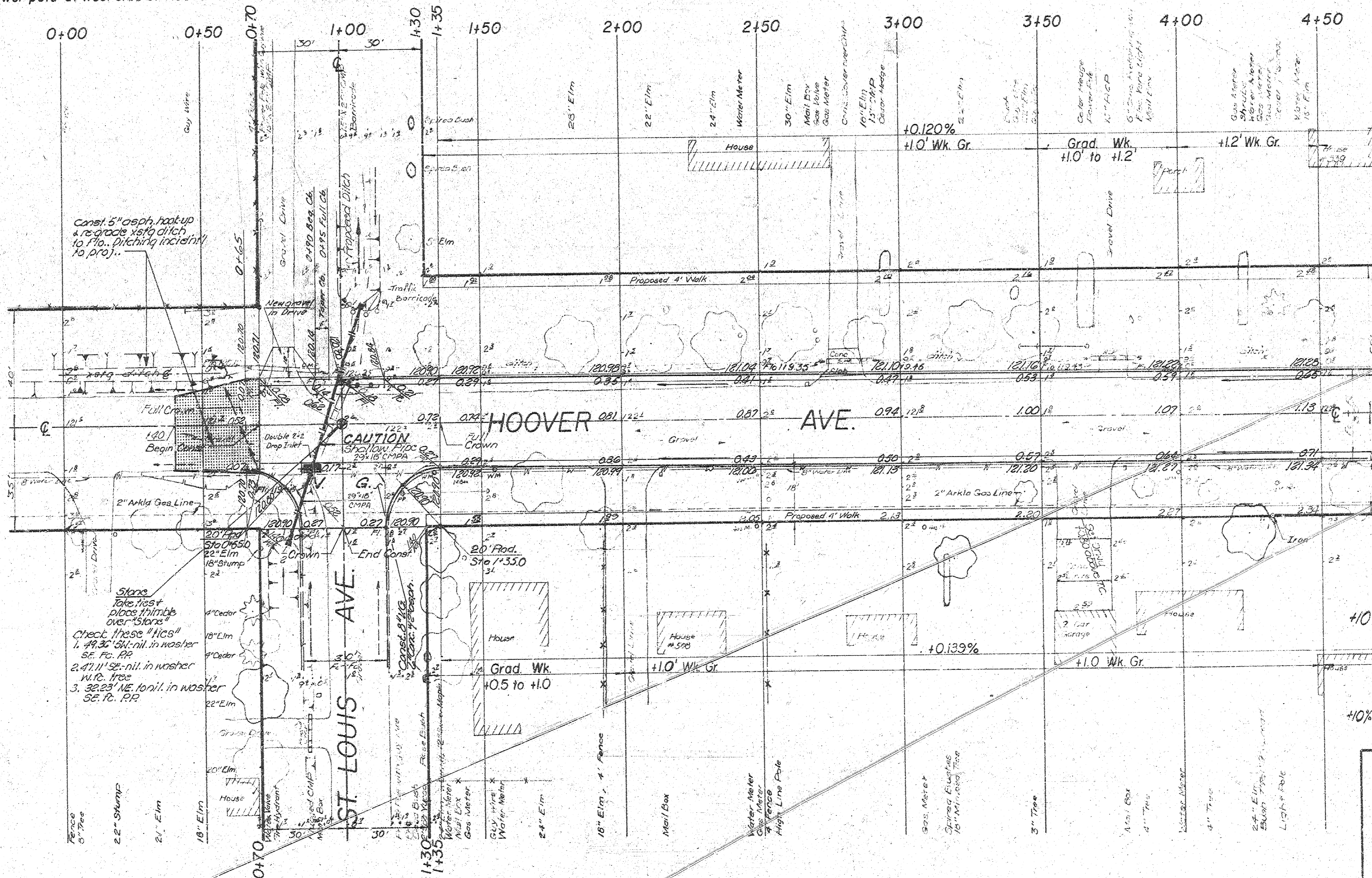
15

BM 123.29 City Std. 34.0ft. east and 42.0ft. north of the C. of Hoover and Central
 BM 123.00 Northeast corner of porch at house number 603 North Hoover Avenue
 BM 122.93 R.R. Spike East face of power pole at west side of Hoover Ave. and South Line St. Louis

Base line is section line north and south on the center line of Hoover Avenue.



Scale: 1" = 20'



~~Anticipation~~
~~Property 2315~~
~~City 382.5~~

Earthwork Quantities

Property	
Excav.	Comp Fill
1598.7	0.0 cr.
+10%	159.9
	1758.6 cr.
City	
Excav.	Comp Fill
311.5	0.0 cr.
+10%	31.2
	342.7 cr.

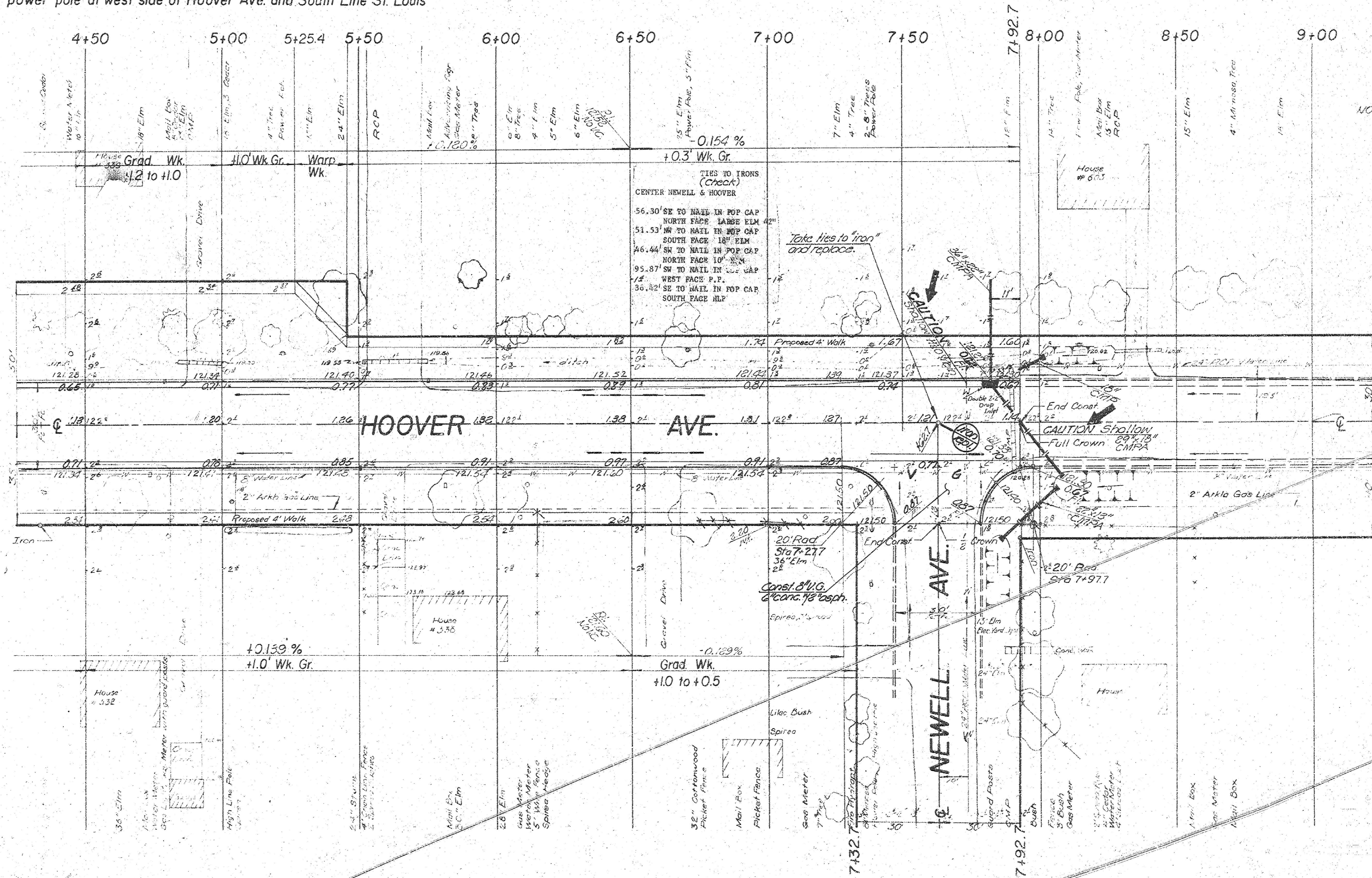
Trees to be removed are marked with X
 Any tree which, in the opinion of the
 Field Engineer, can be saved, shall be saved.

HOOVER AVENUE
 S.L. St. Louis to N.L. Newell
 31' ASPH. CONC. W/COMB.C+B.
CITY OF WICHITA, KANSAS
 R. W. Linn City Engineer
 Proj No. DAKS576058
 Date _____
 472 76 245 80422 000 000 001

BM 123.29 City Sta. 34.0 ft. east and 42.0 ft. north of the C of Hoover and Central
 BM 123.00 Northeast corner of porch at house number 603 North Hoover Avenue
 BM 122.93 R.R. Spike East face of power pole at west side of Hoover Ave. and South Line St. Louis

Base line is section line north and south on the center line of Hoover Avenue.

Scale: 1" = 20'

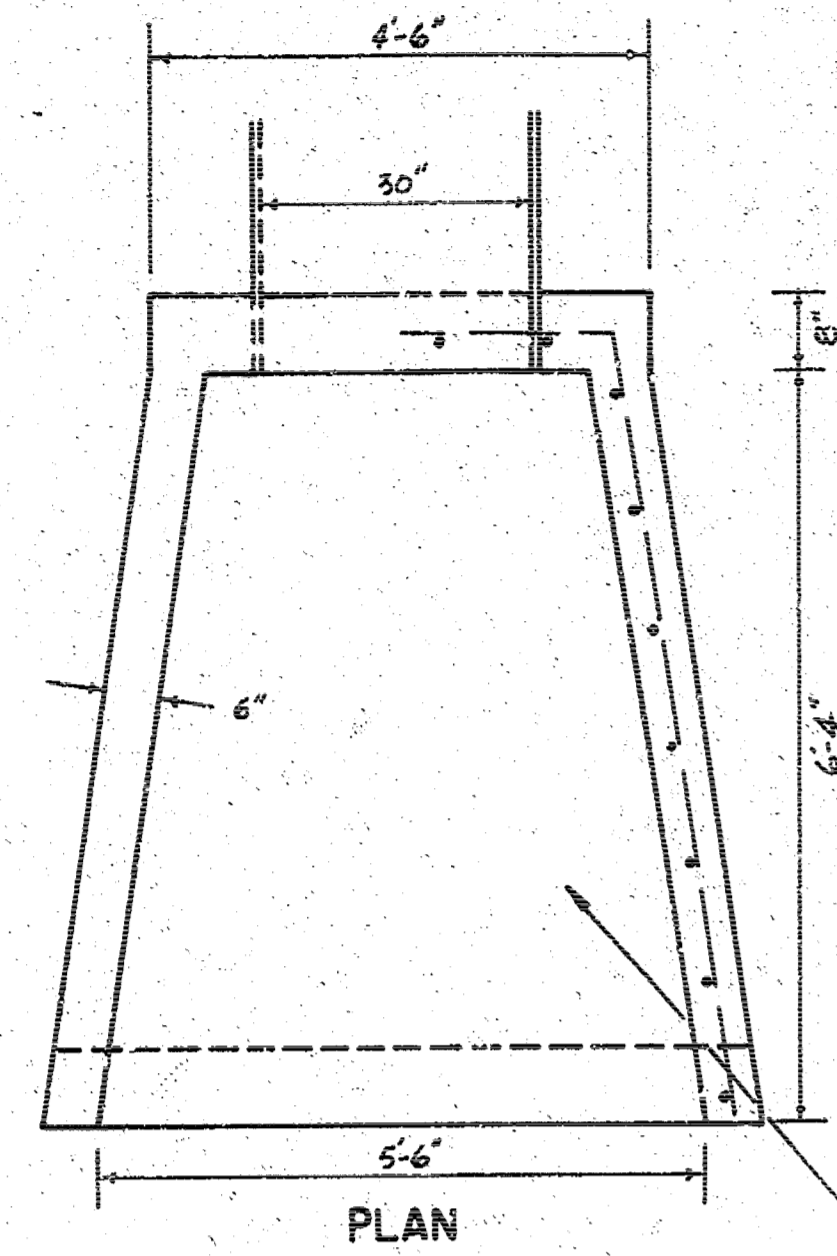


NOTE TO FIELD ENGINEER:
 Check drainage behind property
 line in low areas and determine
 if drain pipes are necessary.

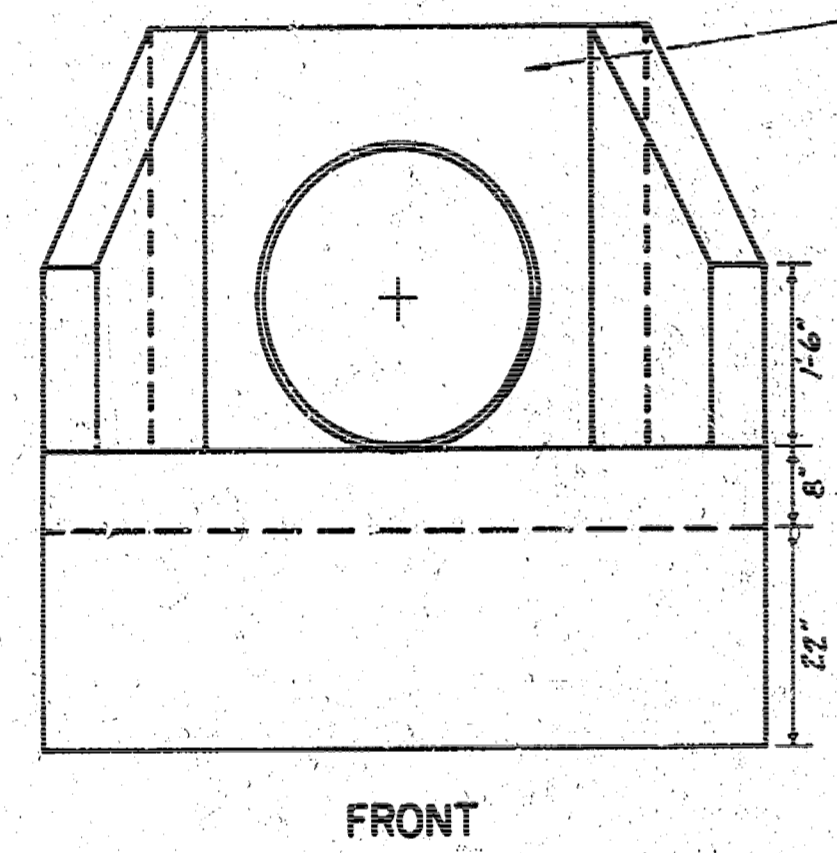
Hoover Ave
 SL St. Louis to NY Newell
 DAKS 576058
 472 76 295 804 23 000 000 001

3/15

B.M. 122.93 R.R. Spike in East Face of P.P. at West Side of Hoover Ave. and South Line of St. Louis Ave.



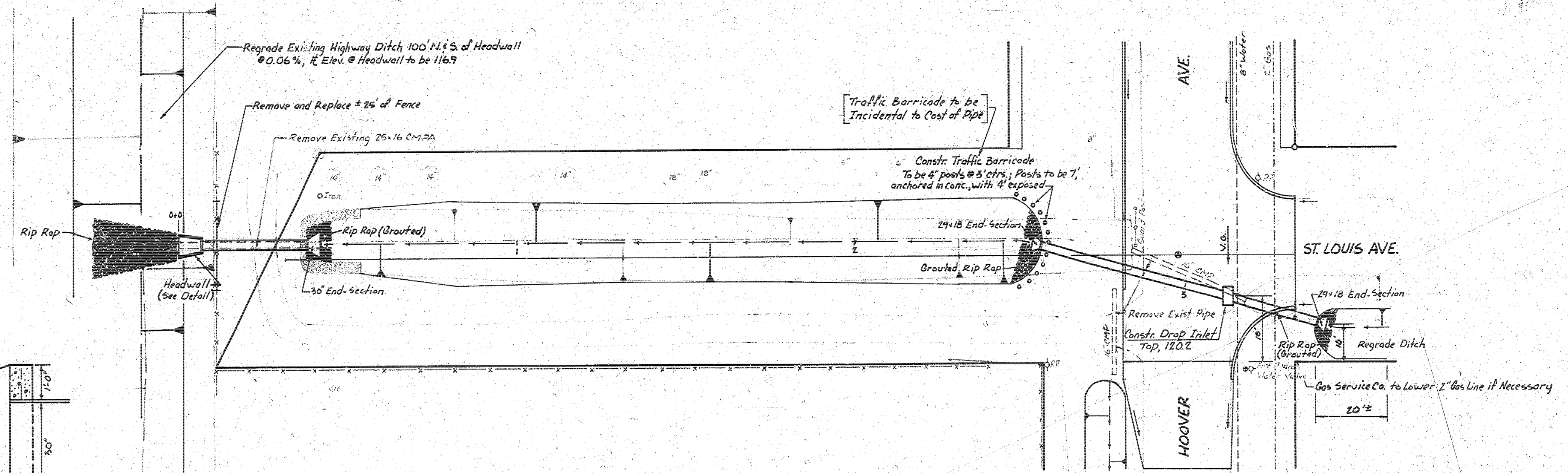
HEADWALL DETAIL
SCALE 1"=2'



6 Sack Paving Mix

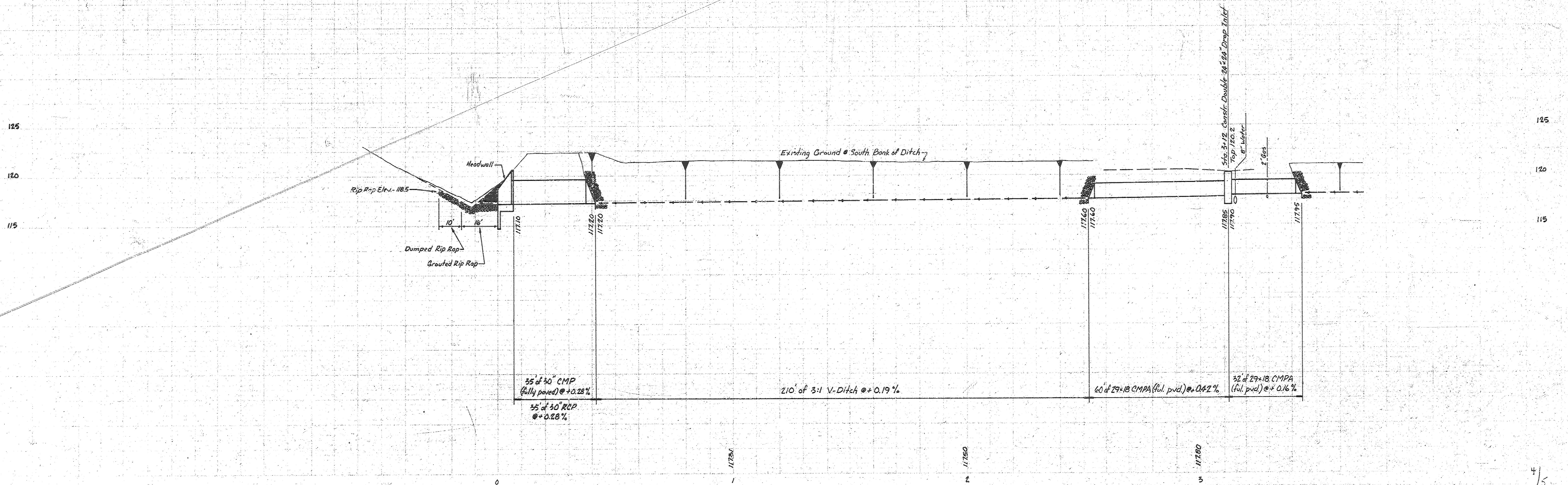
SECTION

#4 @ 12" Transverse Reinforcement Continuous in Floor and Walls



GENERAL NOTES

1. End-Sections to be Bid as L.F. of Pipe
2. All CMPA 21" (or equivalent) and less shall be Corrugated Metal Helical Pipe
3. All Regraded City Street Ditches to be V-Ditches with 3:1 Side Slopes where possible
4. No Trees Shall be Removed or Damaged
5. Before Beginning This Work, Please Notify the Kansas Dept. of Transportation Utility Coordinator, Mr. James Duncan in Wichita, Kansas. When This Work has been Completed, Inform Mr. Duncan Again for Release of Permit.



B.M. 125.00 N.E. Corner of Porch of 603 N. Hoover

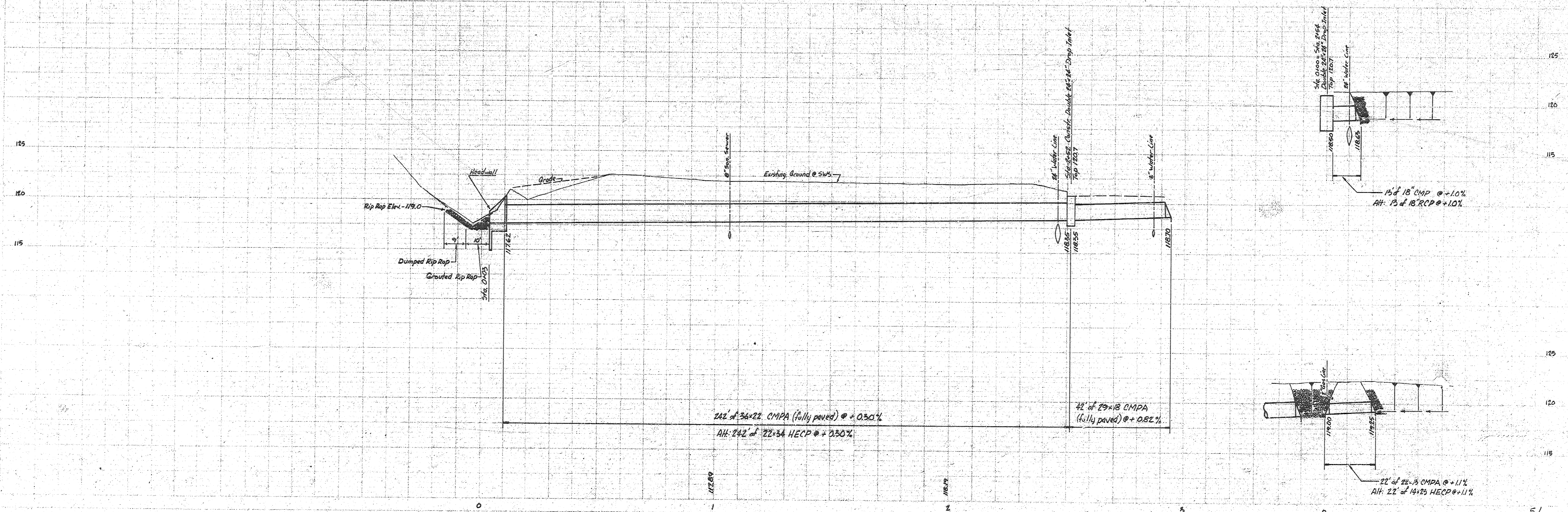
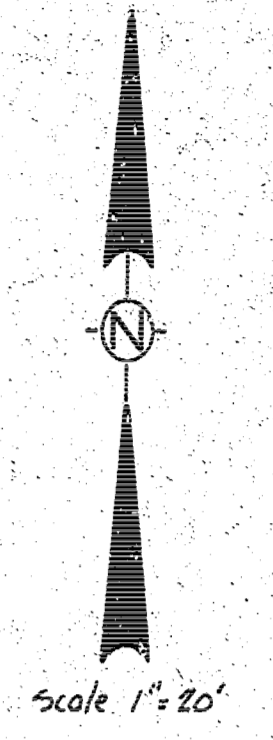
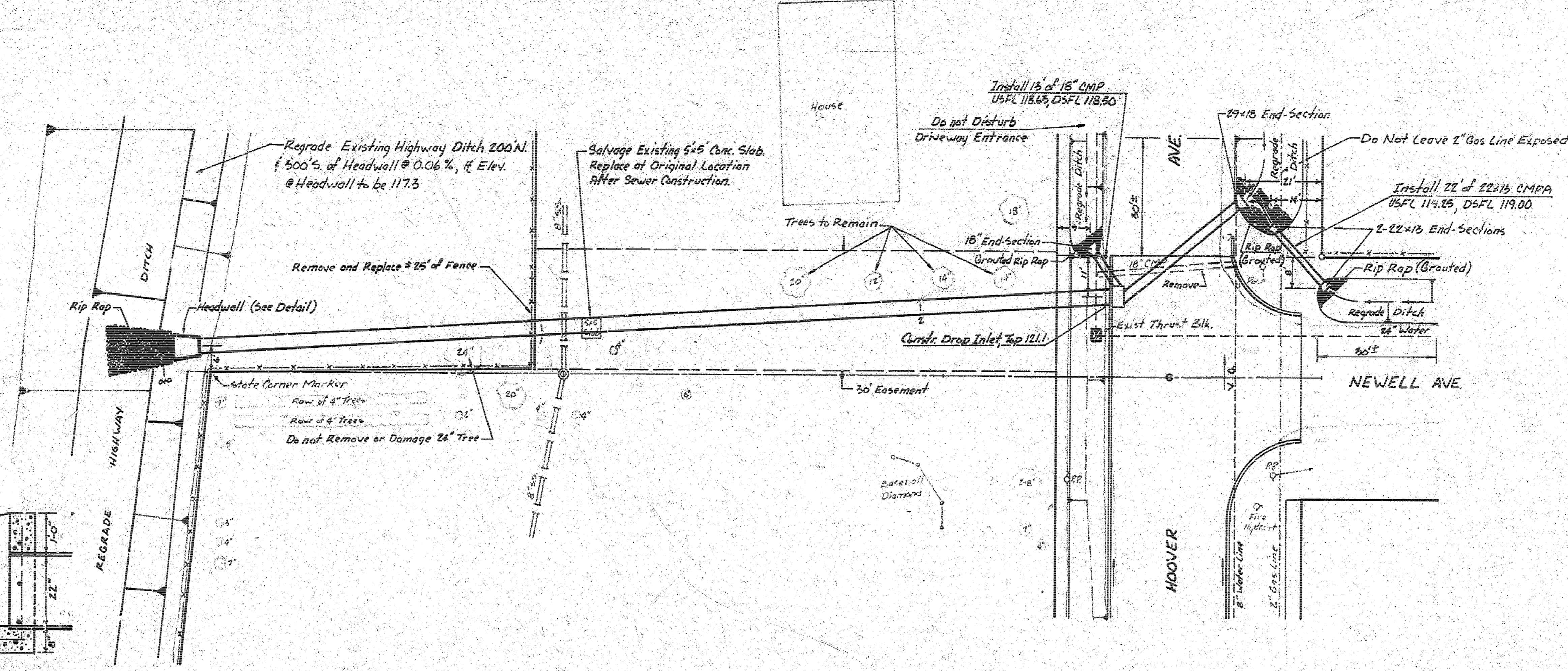
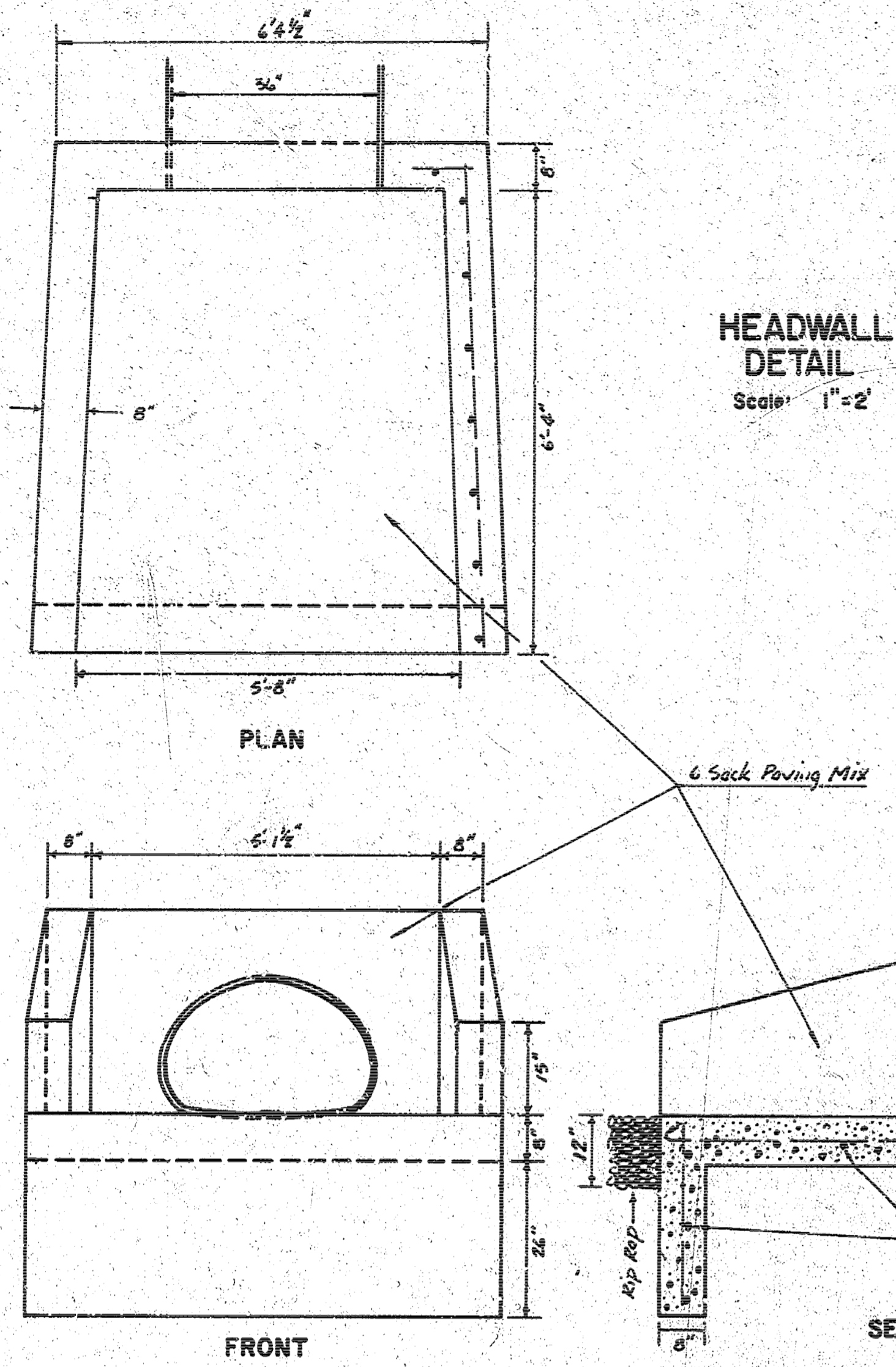


PLATE 1 - PLAN, SECTION AND PROFILE ELEVATION

1 0 4 4 12