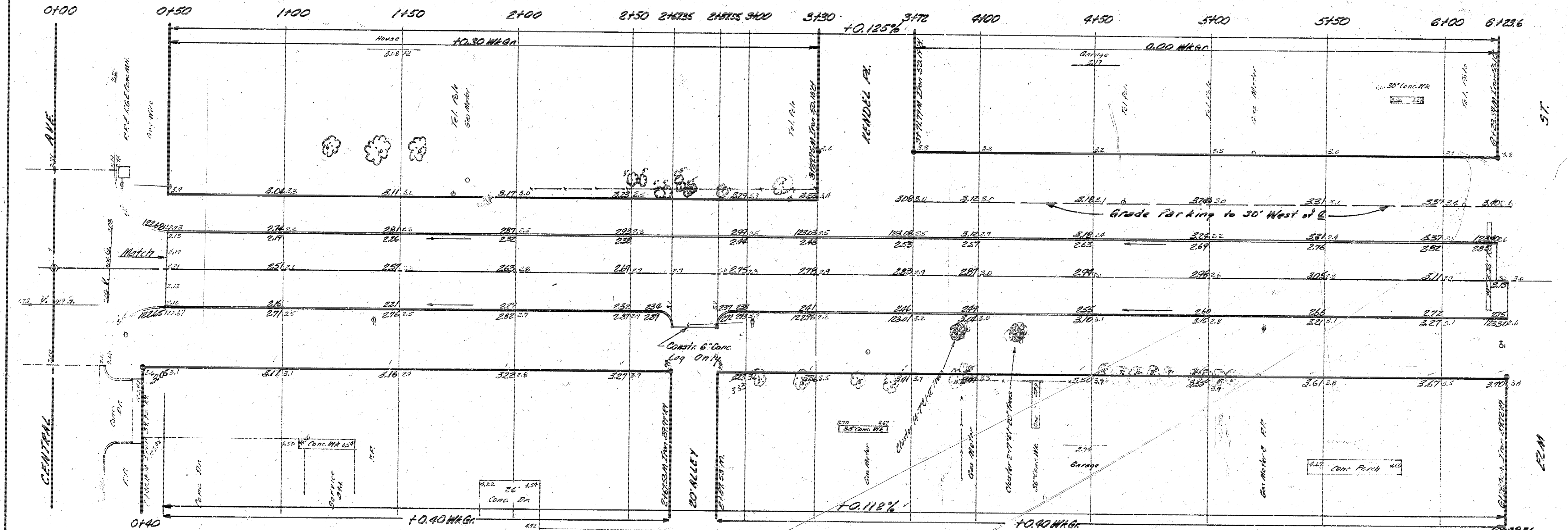
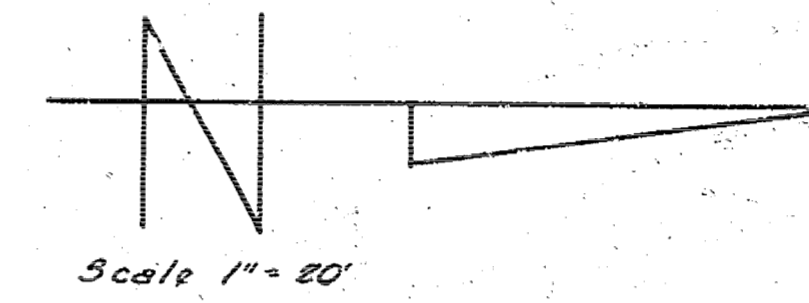


B.M. 123.59 R.R. Spk. N.S.P.R. on S.W. Cor. Central & Wava
 B.M. 123.26 " " Cut on N.W. Cor. Conc. M.H. on Central & Hoover
 B.M. 125.06 S.E. Cor. Conc. B.H. Planter on E.S. House 727 N. Hoover

NOTE TO FIELD ENGR. & CONTRACTOR.
 ALL Drives Not 5'±, 3'±, West Side
 to be 30' from E to back of Walk. Set
 Walk Grade Level with Top of Curb.
 Hoopops to R will be constructed
 of 2" City Mix at Property Owners Request.



Survey done by
 E. E. Smith
 City Engineer
 Wichita, Kan.

Base Line = E from Central to 9th St. Used



EXCAVATION
 PROP 462.3 CY
 46.740%
 514.0 CY 16.11

CITY
 51.9 CY
 5.2410%
 571.1 CY 16.41



1/2

HOOVER ST.
 N. CENTRAL TO S. ELM
 30" CONC. & CB.
 CITY OF WICHITA, KANSAS
 E. E. SMITH CITY ENGINEER
 DATE SEPT. 1964 PROJ. NO. CH-55