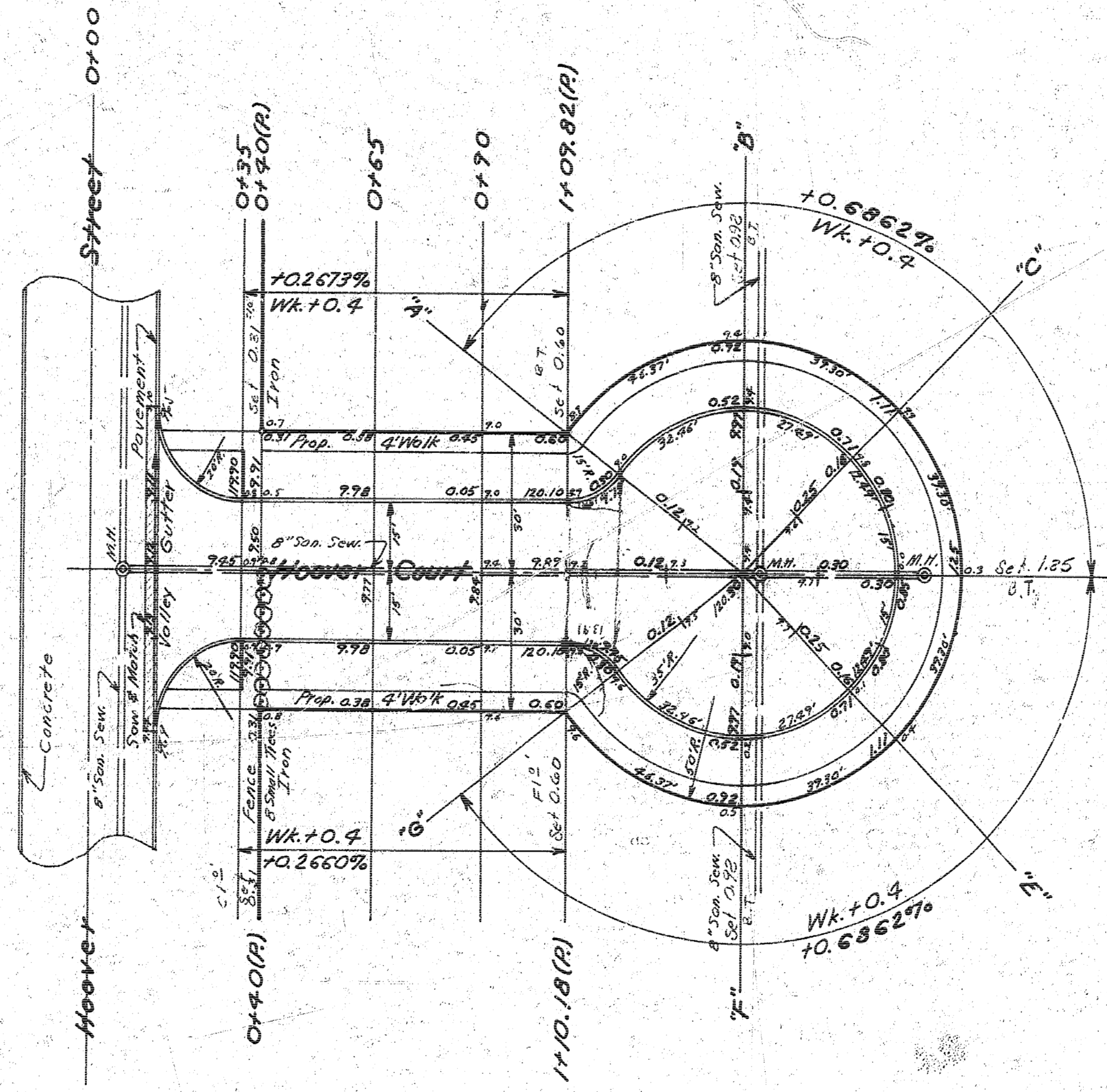
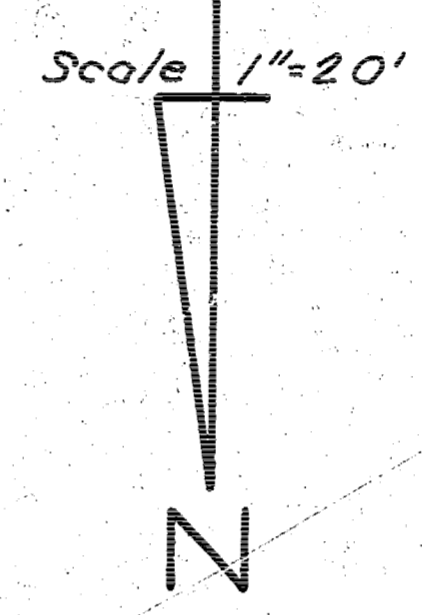


<b>City Earthwork</b>		<b>Property</b>	
Exc. = 71.6 C.Y.		Exc. = 95.1 C.Y.	Comp. Fill = 111.3 C.Y.
+10% = 7.2 C.Y.		+10% = 7.5 C.Y.	+10% = 11.1 C.Y.
<b>Total = 78.8 C.Y.</b>		<b>Total = 102.6 C.Y.</b>	<b>Total = 122.4 C.Y.</b>
		<b>Borrow = 90.0 C.Y.</b>	

Checked: [Signature]  
 Drawn: [Signature]  
 Date: 10/27/70



Note: Contractor to clear right-of-way, grade parkings, and construct compacted fill for sidewalks. Sidewalks to be constructed by others. Top 6" of subgrade to be treated with portland cement. The bid item of Borrow Exc. is to include all costs of furnishing, excavating, and hauling additional dirt necessary to complete the earthwork.

"D" P.V.I. El. 120.90  
30' V.C.

THIRD ST



B.M. 121.82 R.R. spike on S.E. side of RR, NW corner Hoover & Third Street



**HOOVER COURT**  
 W. L. HOOVER STREET TO  
 & INCLUDING CUL-DE-SAC  
 30'-6" CONC. & INT. CURB  
 CITY OF WICHITA, KANSAS  
 B. E. SMITH, CITY ENGINEER  
 PROJ. NO. C 10-42  
 DATE: NOV. 1970

1/2