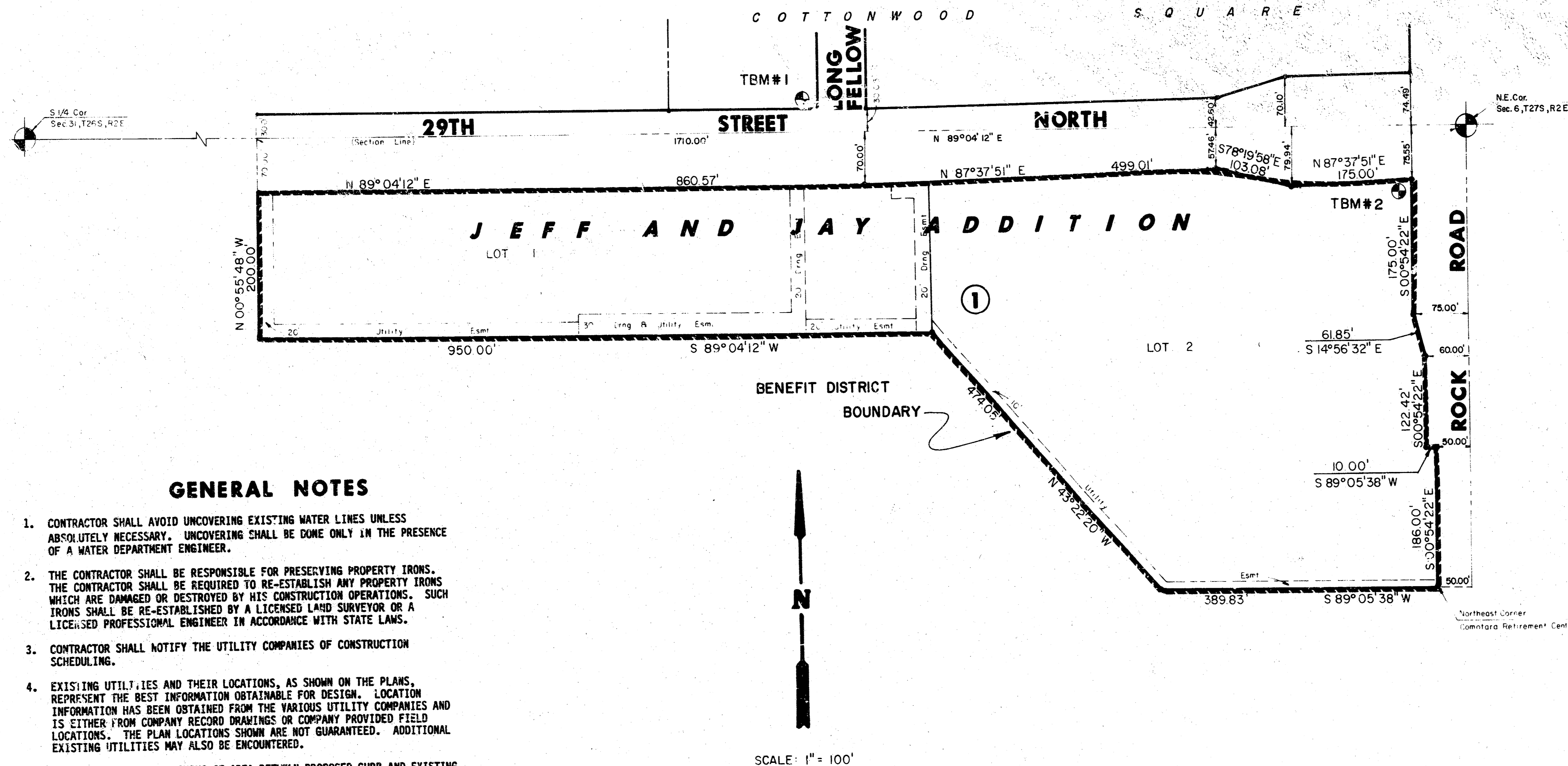


A DECELERATION LANE ON ROCK ROAD FROM A POINT 109.00 FEET SOUTH OF THE NORTH LINE OF THE N.E. 1/4 SEC. 6, T.27 S., R.2E SOUTHERLY 336.00 FEET (TO SERVE JEFF & JAY ADDITION) & ALSO A DECLARATION LANE ON 29TH STREET NORTH FROM A POINT 1,841 FEET WEST OF THE EAST LINE OF THE N.E. 1/4 SEC.6, T.27S., R.2E EASTERLY 1,399 FEET (TO SERVE JEFF & JAY ADDITION)

PROJECT NO. 472-76-245-81473-000-000-001

CITY OF WICHITA, KANSAS
MICHAEL E. LINDEBAK, CITY ENGINEER
SEPT, 1985



INDEX

SHEET NO.	DESCRIPTION
1	TITLE SHEET
2	PAVING DETAILS
3-5	DECEL LANE (29TH ST. NO.)
6	DECEL LANE (ROCK RD.)
7-10	CROSS SECTIONS
11	STORM WATER SEWER
12	INLET DETAIL (TYPE 22)
13	FINAL PLAT

GENERAL NOTES

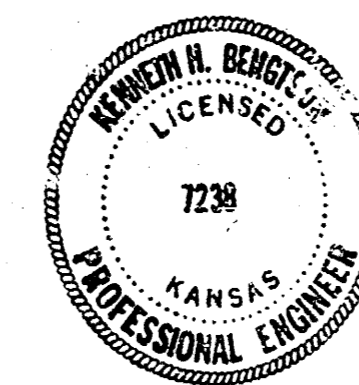
- CONTRACTOR SHALL AVOID UNCOVERING EXISTING WATER LINES UNLESS ABSOLUTELY NECESSARY. UNCOVERING SHALL BE DONE ONLY IN THE PRESENCE OF A WATER DEPARTMENT ENGINEER.
- THE CONTRACTOR SHALL BE RESPONSIBLE FOR PRESERVING PROPERTY IRONS. THE CONTRACTOR SHALL BE REQUIRED TO RE-ESTABLISH ANY PROPERTY IRONS WHICH ARE DAMAGED OR DESTROYED BY HIS CONSTRUCTION OPERATIONS. SUCH IRONS SHALL BE RE-ESTABLISHED BY A LICENSED LAND SURVEYOR OR A LICENSED PROFESSIONAL ENGINEER IN ACCORDANCE WITH STATE LAWS.
- CONTRACTOR SHALL NOTIFY THE UTILITY COMPANIES OF CONSTRUCTION SCHEDULING.
- EXISTING UTILITIES AND THEIR LOCATIONS, AS SHOWN ON THE PLANS, REPRESENT THE BEST INFORMATION OBTAINABLE FOR DESIGN. LOCATION INFORMATION HAS BEEN OBTAINED FROM THE VARIOUS UTILITY COMPANIES AND IS EITHER FROM COMPANY RECORD DRAWINGS OR COMPANY PROVIDED FIELD LOCATIONS. THE PLAN LOCATIONS SHOWN ARE NOT GUARANTEED. ADDITIONAL EXISTING UTILITIES MAY ALSO BE ENCOUNTERED.
- COST OF SEEDING & MULCHING OF AREA BETWEEN PROPOSED CURB AND EXISTING SIDEWALK SUBSIDIARY TO PROJECT.

NOTE: CONTRACTOR SHALL NOTIFY THE FOLLOWING COMPANIES PRIOR TO ANY EXCAVATION:

ARKALA GAS COMPANY	942-8350
BELL TELEPHONE	268-2256
CABLEVISION	269-0660
GAS SERVICE COMPANY	263-7511
KANSAS GAS & ELECTRIC	261-6248
KANSAS ONE-CALL	1-800-344-7233

BENCHMARKS

- TBM#1 1" cut on S.E. corner of inlet at west end of N.W. return at 29TH and Longfellow. Elev. = 196.22 city datum
- TBM#2 R.R. spike in N.E. face of power pole 43.5' S. & 52.5' W of the thimble at the intersection of 29th & ROCK. (Spike is under ground) Elev. = 213.70 city datum

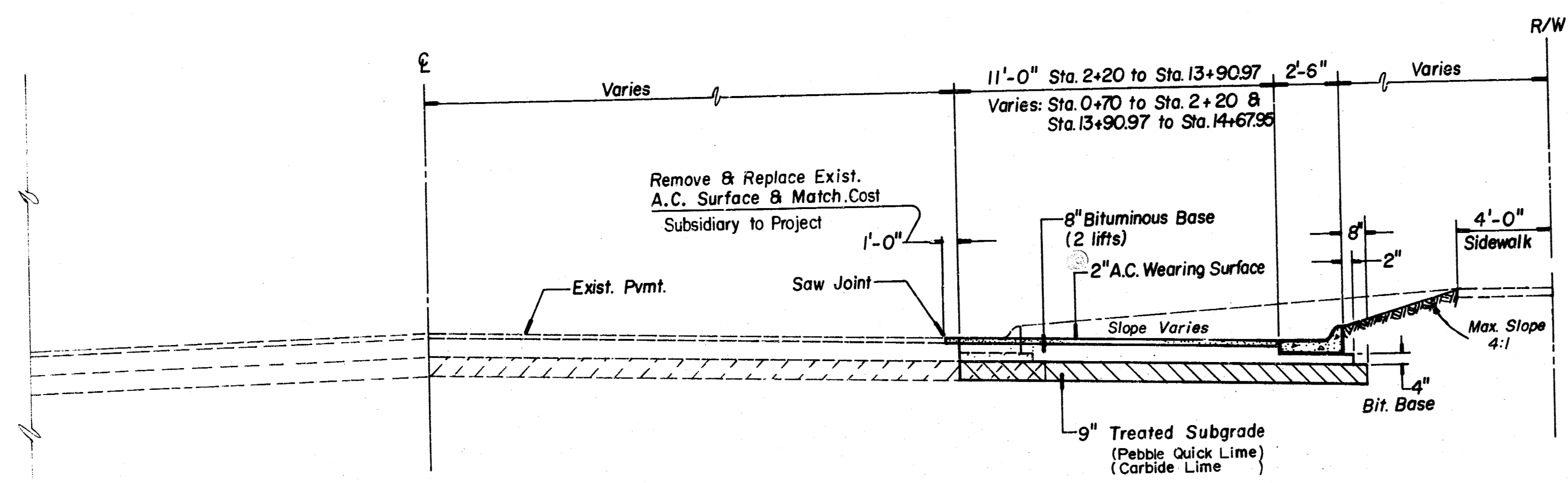


	JEFF AND JAY ADDITION DECEL LANE	Drawn by: KKL Checked by: KHB Date: SEPT 85
	MID KANSAS ENGINEERING CONSULTANTS PA 2211 NORTH ROCK ROAD WICHITA, KANSAS 67206	Scale: 1/3 682-6561

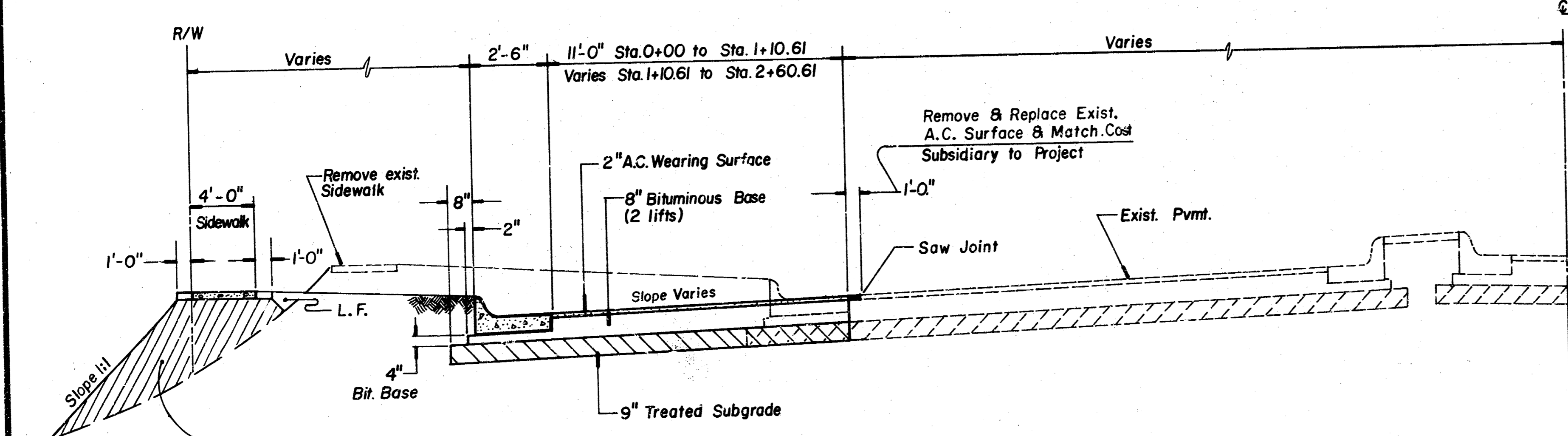
FILMED FROM THE BEST AVAILABLE COPY....

GENERAL NOTES:

1. THE ASPHALTIC CONCRETE PAVEMENT BETWEEN THE COMBINED CURB AND GUTTER SHALL BE PAID AS SQUARE YARDS OF 10" ASPHALTIC CONCRETE (8" BITUMINOUS BASE).
2. THE BITUMINOUS BASE UNDER AND BEHIND THE COMBINED CURB AND GUTTER SHALL BE PAID AS SQUARE YARDS OF 4" BITUMINOUS BASE.
3. A TACK COAT OF EMULSIFIED ASPHALT (SC-1H OR CSS-1H) SHALL BE APPLIED AT AN APPROXIMATE RATE OF 0.05 GALLONS PER SQUARE YARD BETWEEN EACH LIFT OF ASPHALTIC MATERIAL.
4. BITUMINOUS BASE AND ASPHALTIC CONCRETE WEARING SURFACE SHALL BE PLACED WITH A LAYDOWN MACHINE HAVING AUTOMATIC CONTROLS FOR LINE AND GRADE.
5. CONSTRUCTION JOINTS IN EACH LIFT SHALL BE STAGGERED A MINIMUM DISTANCE OF ONE (1) FOOT FROM JOINTS IN PRECEDING LIFTS AND PLACED SO THAT A JOINT WILL BE CONSTRUCTED ON THE CENTERLINE OF THE TOP LIFT.
6. CONTRACTOR TO BID ONLY ONE SUBGRADE TREATMENT ALTERNATE WHEN ALTERNATES ARE PROVIDED IN THE PROPOSAL AND CONTRACT. THE ALTERNATE CHOSEN BY THE SUCCESSFUL BIDDER SHALL BE USED IN CONSTRUCTING THIS PROJECT.

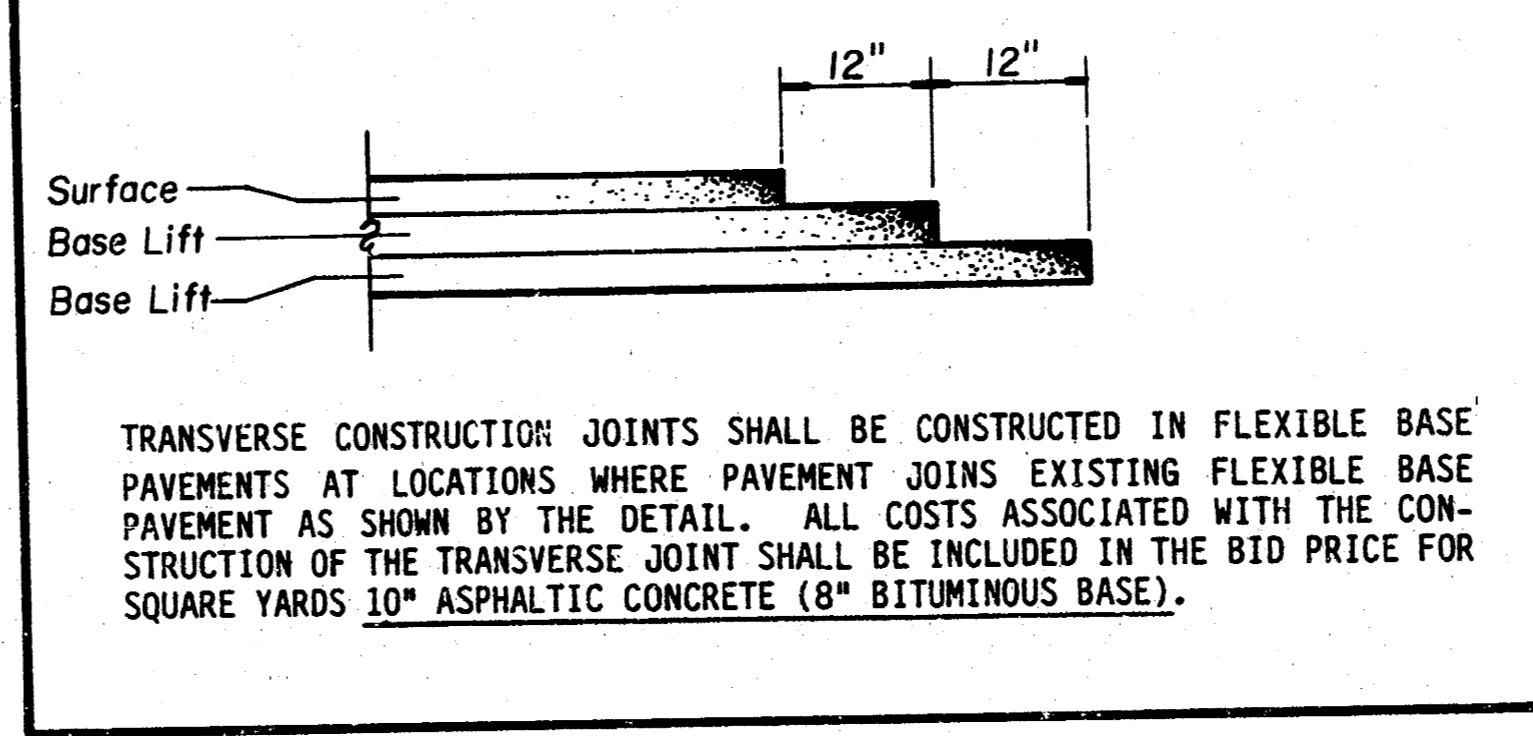


TYPICAL 29TH STREET DECEL LANE

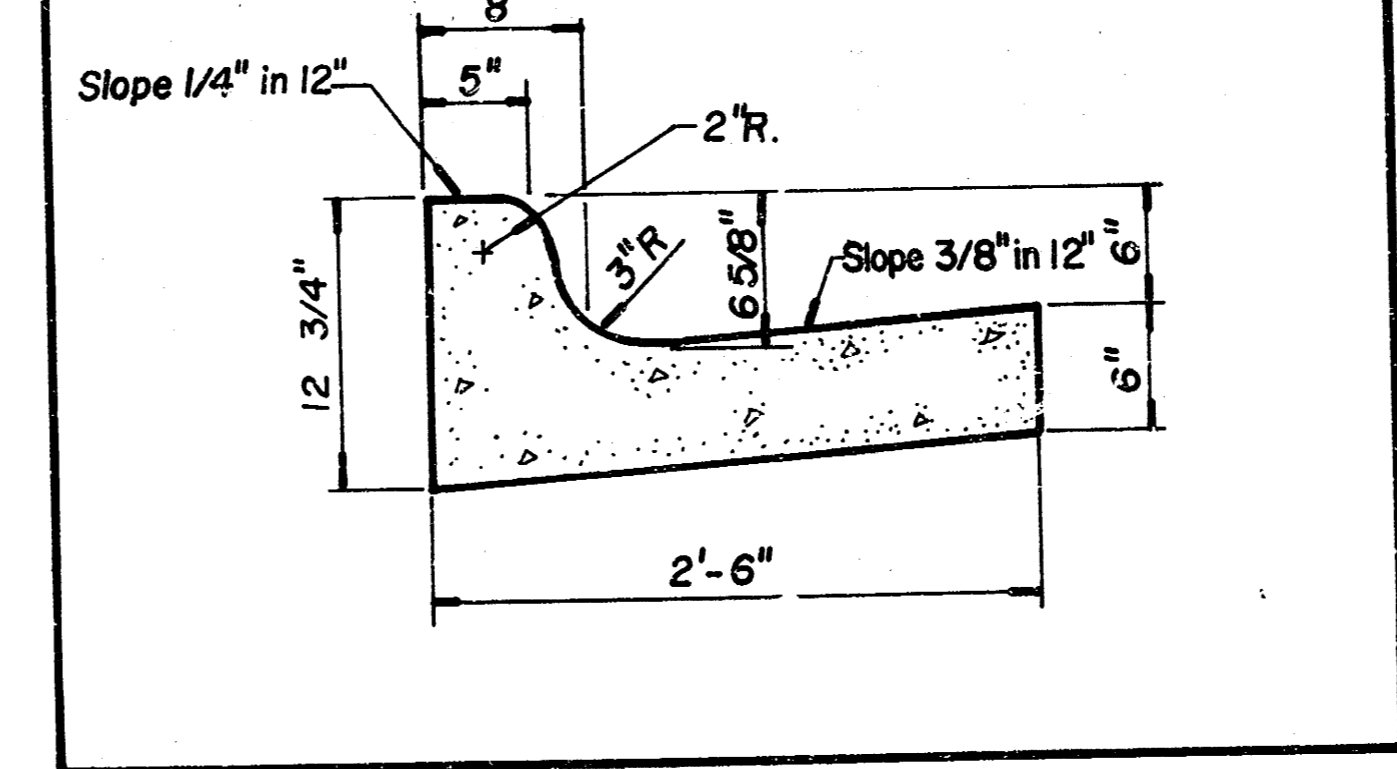


TYPICAL ROCK ROAD DECEL LANE

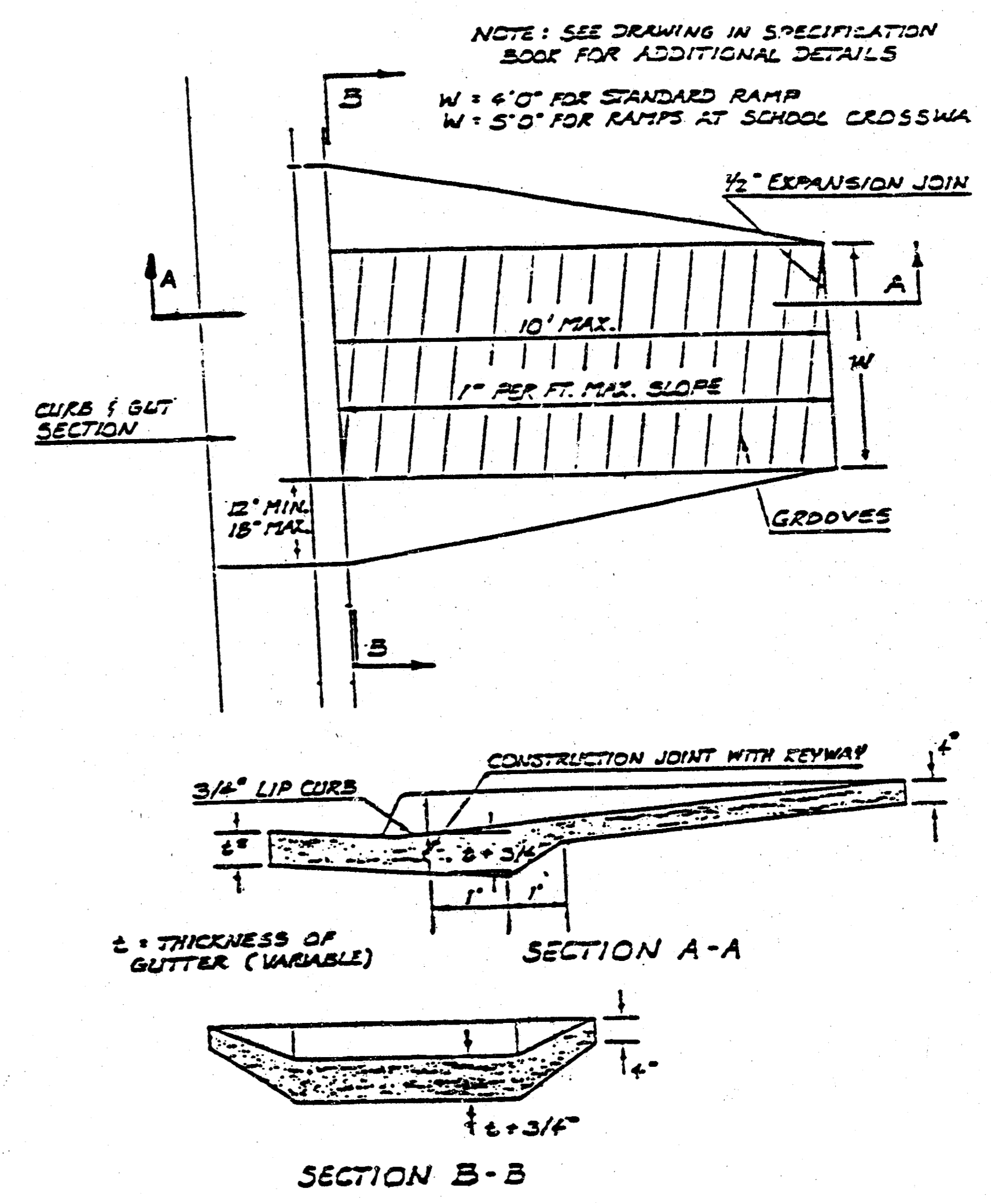
TRANSVERSE CONSTRUCTION JOINTS



COMBINED CURB & GUTTER



STANDARD WHEELCHAIR RAMP CONSTRUCTION DETAIL FOR STREETS WITH COMBINED CURB & GUTTER

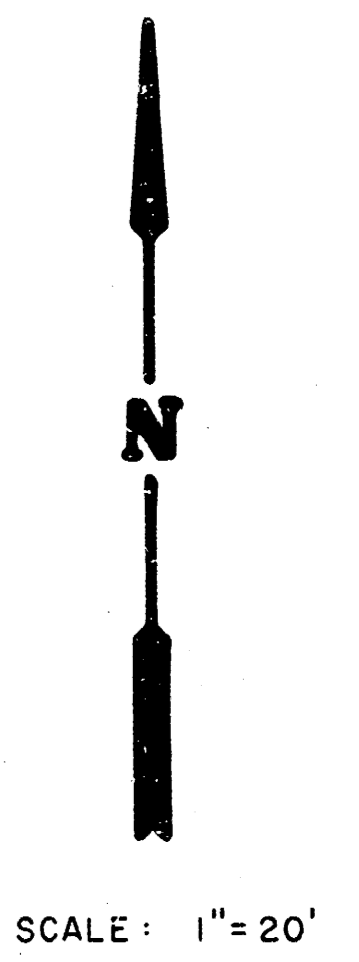
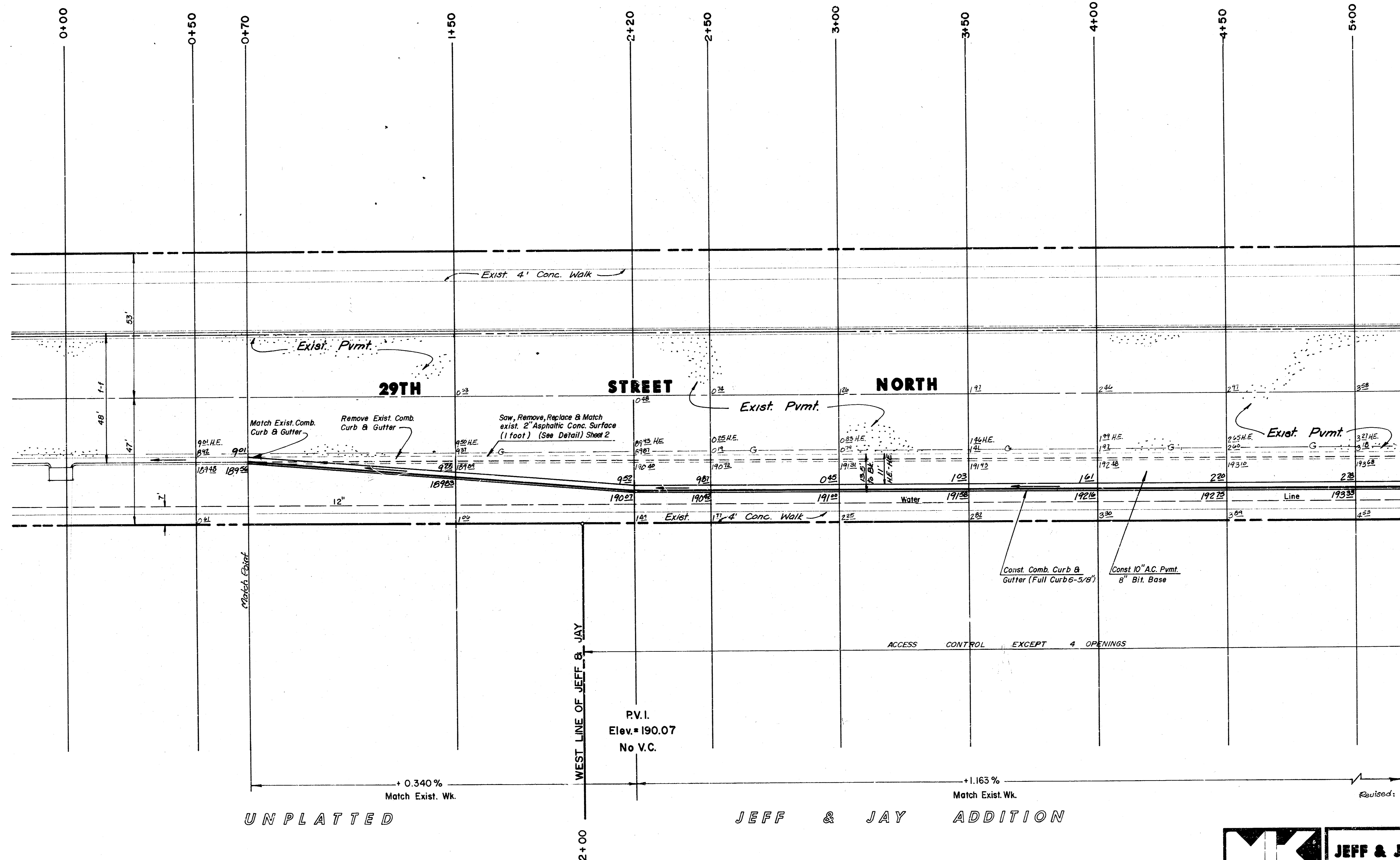


NOTE: The cost of all work indicated on this sheet for wheel chair ramp construction shall be included in the unit price bid for wheel chair ramp which price shall include all costs of excavation, compaction of subgrade, and necessary area grading.

	<p>JEFF AND JAY ADDITION</p> <p>PAVING DETAILS</p>	<p>Design KKL</p> <p>Drawn by KKL</p> <p>Checked by</p> <p>Date</p> <p>Job no. 61473</p>
	<p>MID-KANSAS ENGINEERING CONSULTANTS PA</p> <p>3500 NORTH ROCK ROAD</p> <p>BUILDING #800</p> <p>WICHITA, KANSAS 67226</p>	<p>Sheet 2</p> <p>of 13</p>
	<p>682-6561</p>	

FILMED FROM THE BEST AVAILABLE COPY.....

UNPLATTED



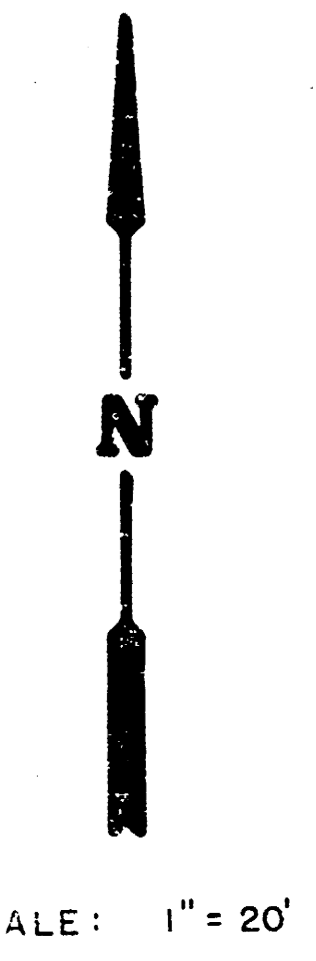
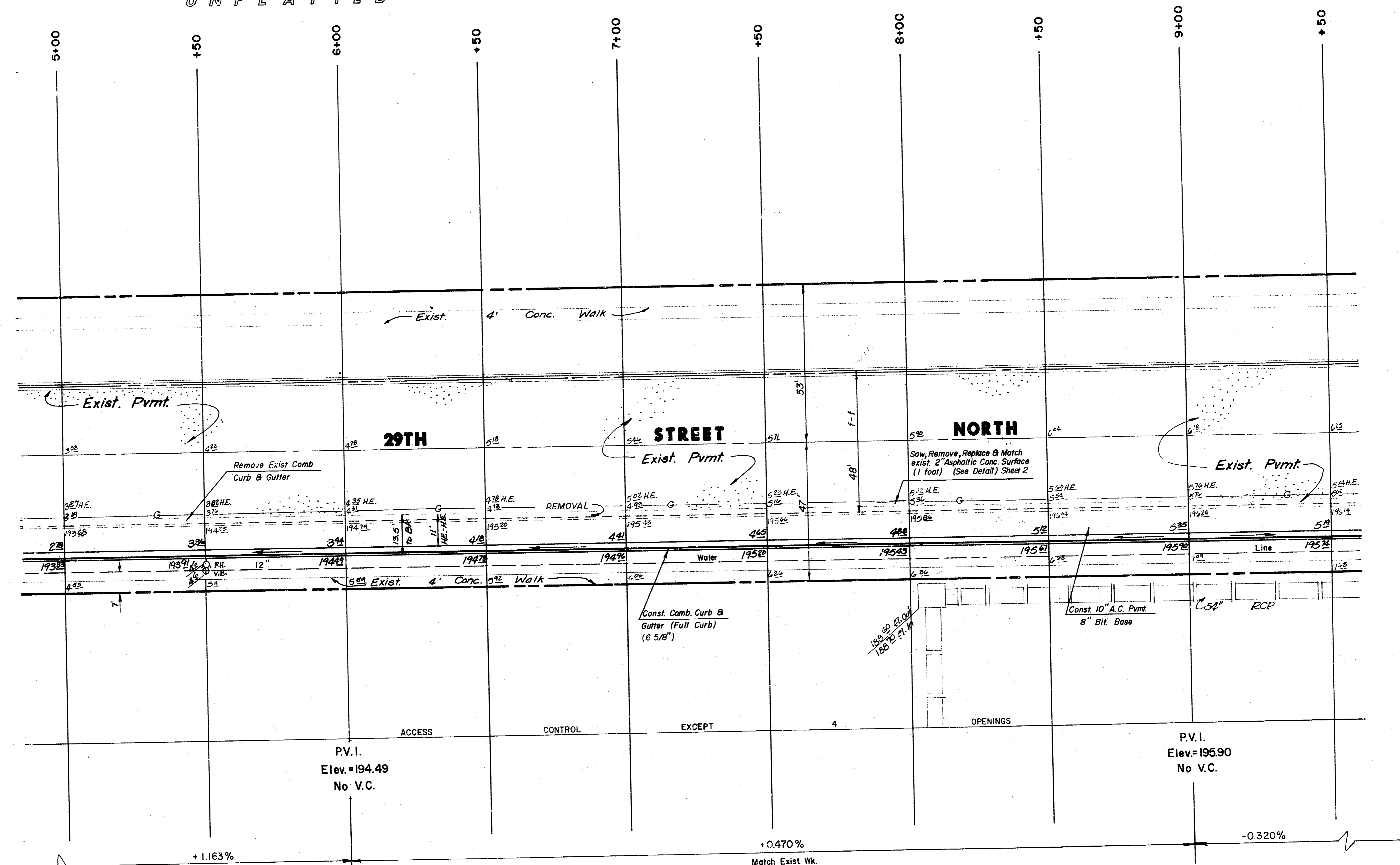
EARTHWORK QUANTITIES		
	Excavation	Comp. Fill
	1319.20 C.Y.	72.96 C.Y.
+ 10%	131.92 C.Y.	7.29 C.Y.
Total	1451.12 C.Y.	80.19 C.Y.
Manipulation 2380.00 S.Y.		

	JEFF & JAY ADDTN. DECEL LANE 29TH. ST. PAVING PLANS	Design: KKL Drawn by: KKL Checked by: KHB Date: SEPT. 1985 100-0 81473
	MID-KANSAS ENGINEERING CONSULTANTS PA 240 NORTH ROCK ROAD SUITE 130 WICHITA, KANSAS 67206	3/13 Sheet 3 of 13
	682-6561	

FILMED FROM THE BEST AVAILABLE COPY

UNPLATTED

COTTONWOOD SQUARE



P.V.I. Elev.=194.49 No V.C.

P.V.I. Elev.=195.90 No V.C.

+1.163%

+0.470% Match Exist Wk.

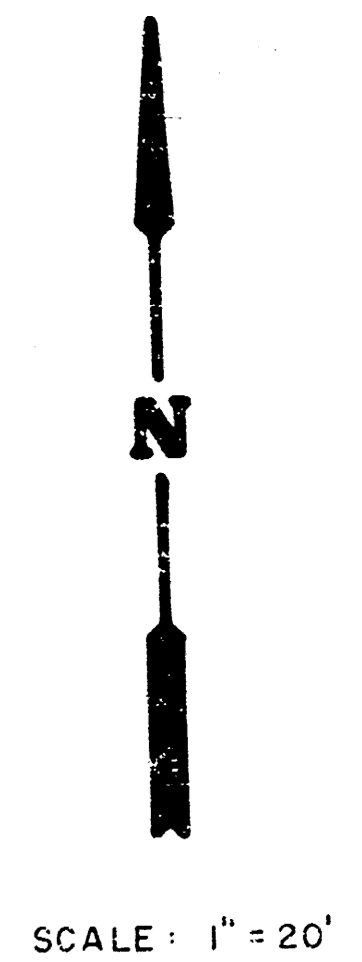
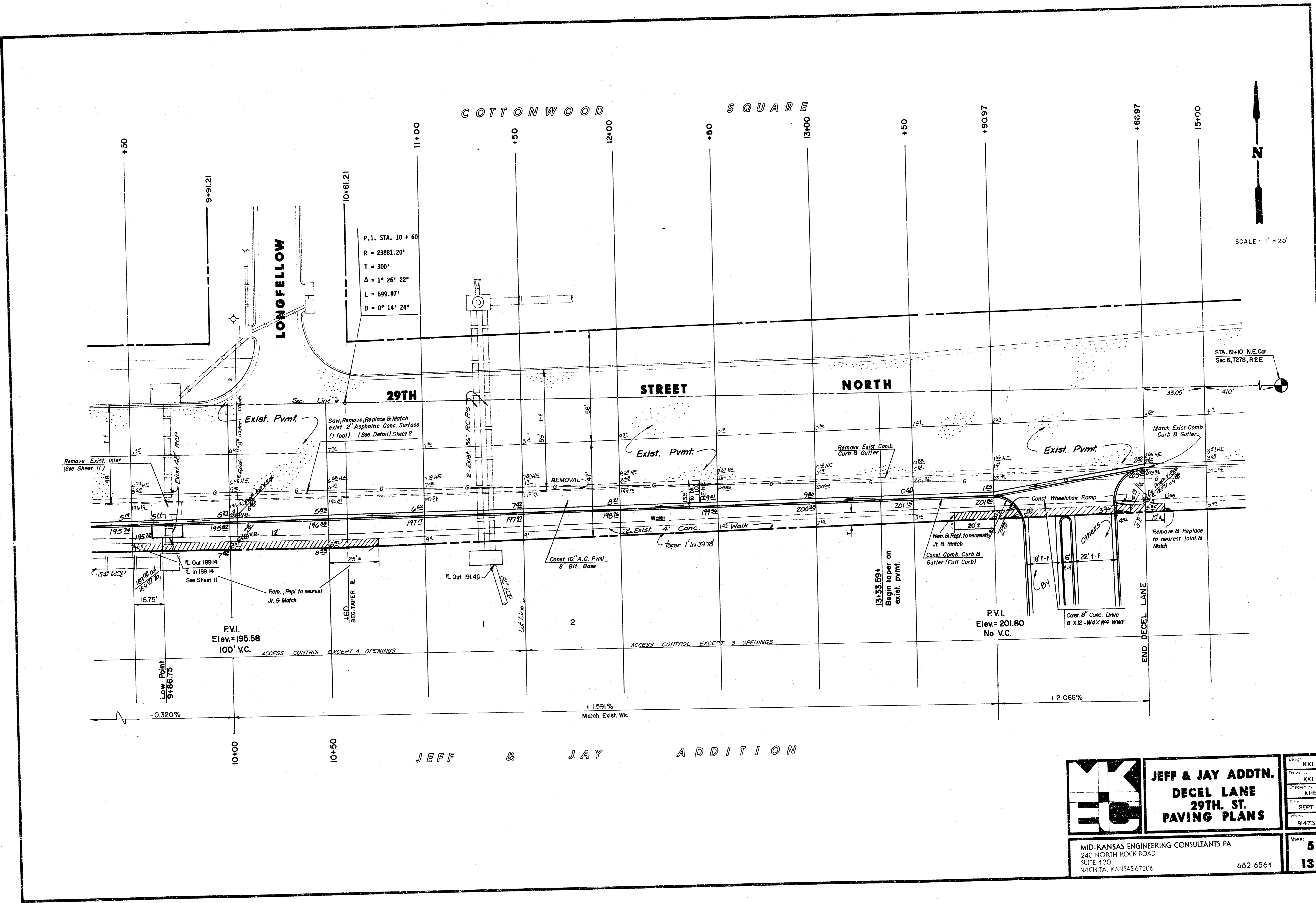
-0.320%

Revised: 1-28-84 to Reflect Exist. gas Lts under pavement.

JEFF & JAY ADDITION

	JEFF & JAY ADDTN.		Desg: KKL
	DECEL LANE		Drawn: KKL
	29TH. ST.		Checked: KHB
	PAVING PLANS		Date: SEPT 85
MID-KANSAS ENGINEERING CONSULTANTS PA 240 NORTH ROCK ROAD SUITE 130 WICHITA, KANSAS 67206		682-6561	Sheet: 4 of 13

FILMED FROM THE BEST AVAILABLE COPY



P.I. STA. 10 + 60
 R = 23881.20'
 T = 300'
 Δ = 1° 26' 22"
 L = 599.97'
 D = 0° 14' 24"

STA. 19+10 N.E. Cor.
 Sec. 6, T27S, R2E

P.V.I.
 Elev. = 195.58
 100' V.C.

P.V.I.
 Elev. = 201.80
 No V.C.

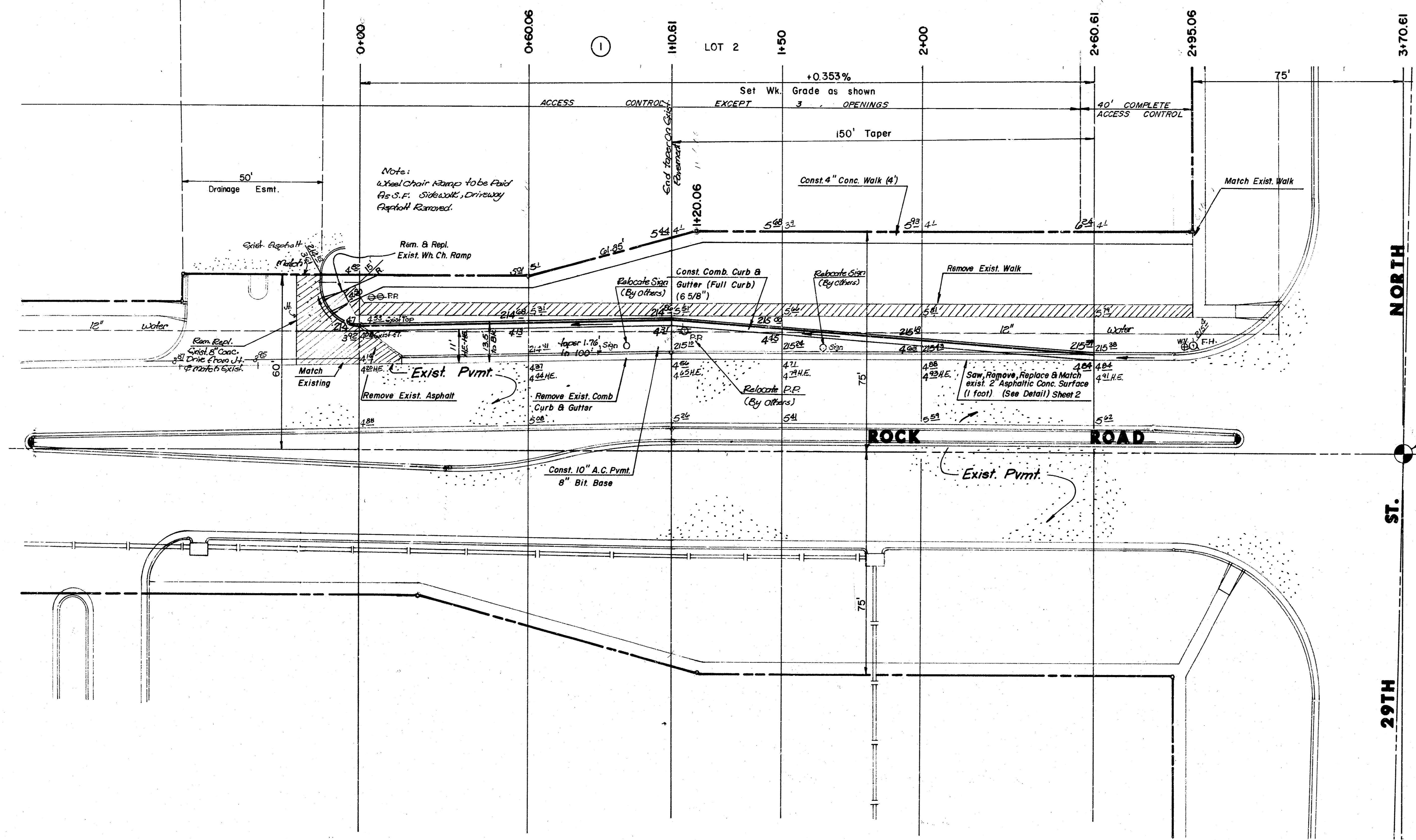
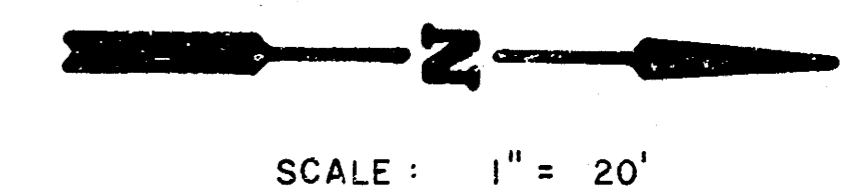
JEFF & JAY ADDTN.
DECEL LANE
29TH. ST.
PAVING PLANS

MID-KANSAS ENGINEERING CONSULTANTS PA
 240 NORTH ROCK ROAD
 SUITE 130
 WICHITA, KANSAS 67206

Design	KKL
Drawn	KKL
Checked	KHB
Date	SEPT 85
Sheet	5
Project	81473
Scale	13

FILMED FROM THE BEST AVAILABLE COPY

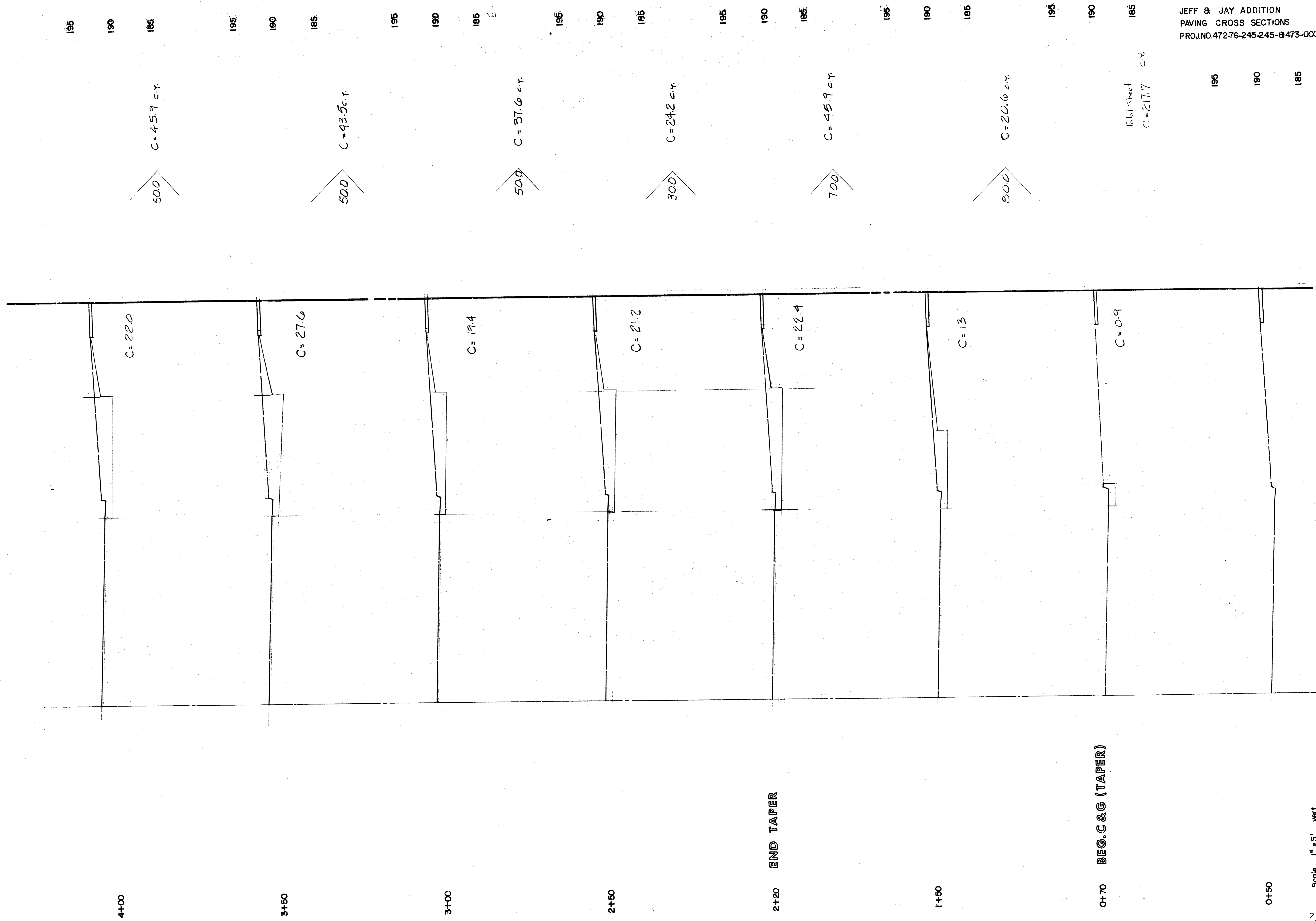
JEFF & JAY ADDITION



CENTRAL CHRISTIAN ADDITION

	JEFF & JAY ADDTN. DECEL LANE ROCK ROAD PAVING PLANS		Design KKL
			Drawn by KKL
			Checked by KHB
			Date SEPT 85
		Job no. 847	Sheet 6 of 13
MID-KANSAS ENGINEERING CONSULTANTS PA 3500 NORTH ROCK ROAD BUILDING #800 WICHITA, KANSAS 67226			682-6561

FILMED FROM THE BEST AVAILABLE COPY.....



JEFF & JAY ADDITION
PAVING CROSS SECTIONS
PROJ. NO. 472-76-245-245-8473-000-000-0-01

Total Sheet
C=217.7 c.y.

185
190
185

195
190
185

195
190
185

195
190
185

195
190
185

195
190
185

195
190
185

195
190
185

4+00

3+50

3+00

2+50

2+20

1+50

0+70

0+50

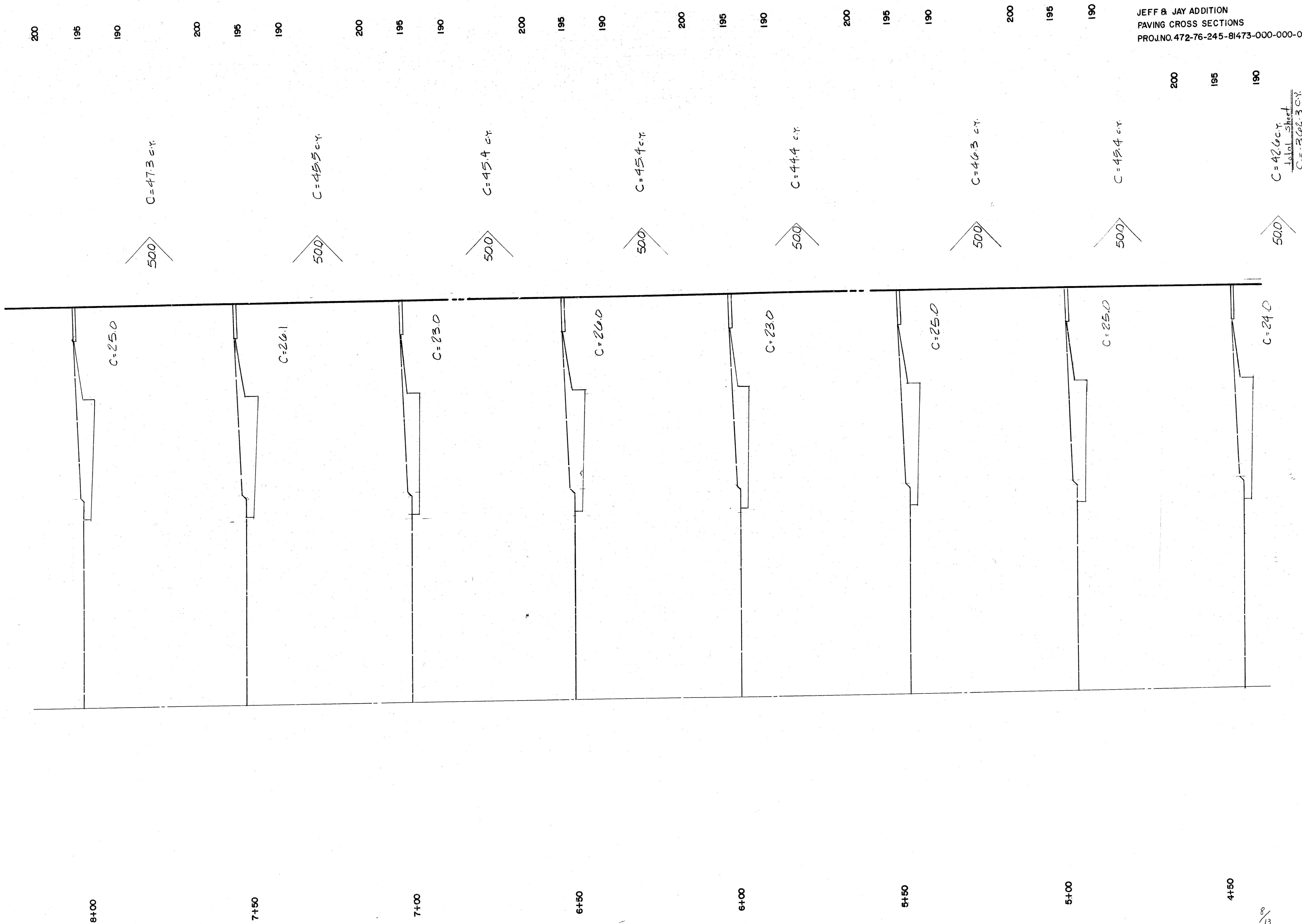
END TAPER

BEG. C & G (TAPER)

Scale 1" = 5' vert
1" = 5' horz

7 of 13

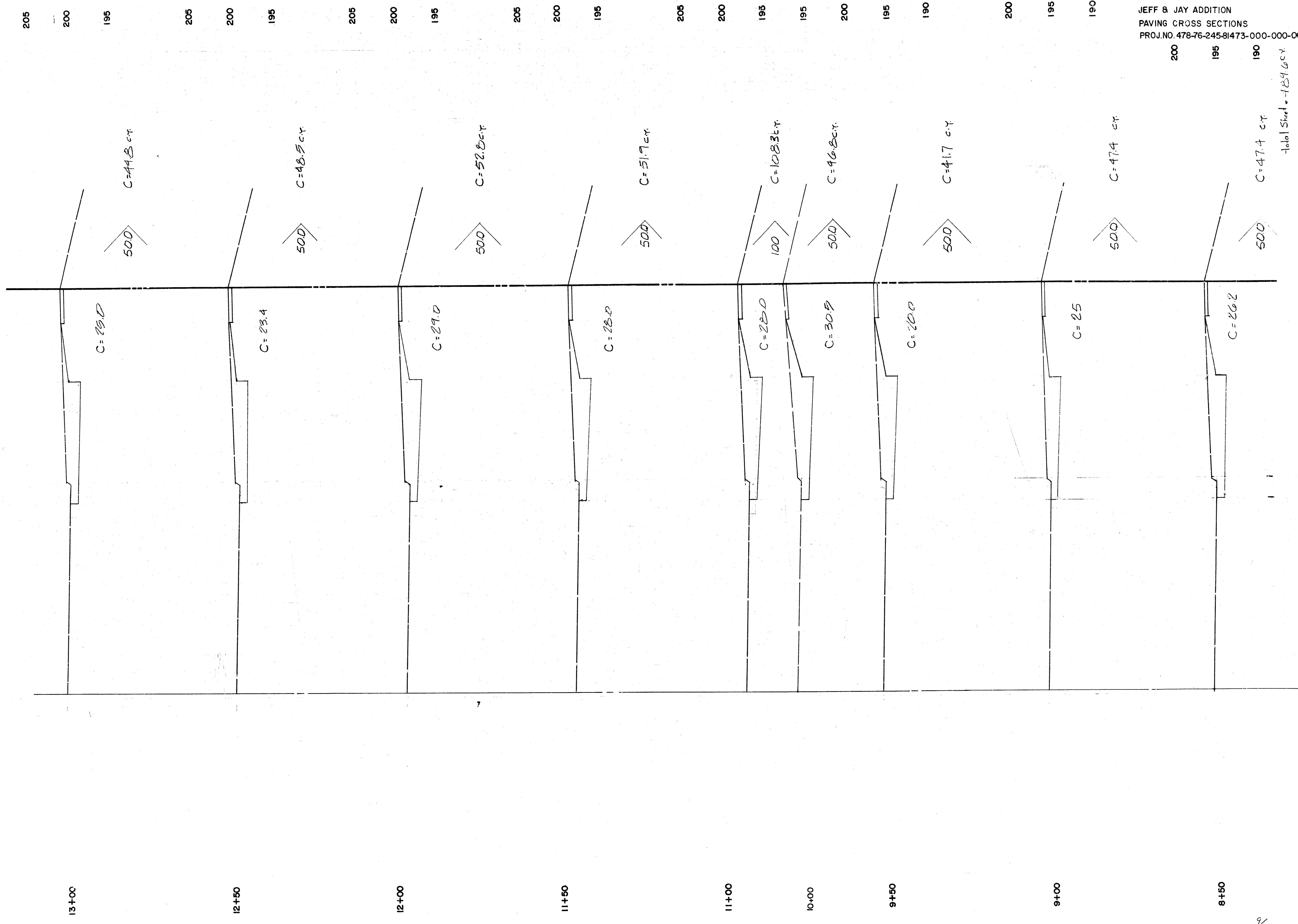
FILMED FROM THE BEST AVAILABLE COPY



JEFF & JAY ADDITION
 PAVING CROSS SECTIONS
 PROJ. NO. 472-76-245-81473-000-000-001

C = 426.0 c.r.
 Total sheet
 C = 302.3 c.r.

FILMED FROM THE BEST
 AVAILABLE COPY.....



JEFF & JAY ADDITION
 PAVING CROSS SECTIONS
 PROJ. NO. 478-76-245-81473-000-000-001

200
195
190
Total Street = 189.65 ft

FILMED FROM THE BEST
 AVAILABLE COPY

END DECEL LANE - ROCK RD.

2+60.61 Lt.

END TAPER

C = 0.9
CF = 12.33
LF = 13.5

4061
C = 13.9 c.y.
CF = 26.1 c.y.
LF = 26.9 c.y.

220

215

210

220

215

210

500
C = 28.5 c.y.
CF = 20.1 c.y.
LF = 20.8 c.y.

C = 11.5
CF = 10.88
LF = 10.50

1+60 Lt.

C = 19.3
CF = 40.88
LF = 12.0

215

210

3939
C = 28.5 c.y.
CF = 12.9 c.y.
LF = 12.4 c.y.

1+10.61 Lt.

BEGIN TAPER

C = 19.8
CF = 6.75
LF = 5.0

215

210

11061
C = 55.3 c.y.
CF = 13.8 c.y.
LF = 10.2 c.y.

0+00 Lt.

C = 7.2

Total: (Rock Rd)
C = 126.2 c.y.
CF = 72.9 c.y.
LF = 70.3 c.y.

220

215

210

210

205

200

BEGIN DECEL LANE - ROCK RD.

END DECEL LANE - 29TH ST. NO.

14+66.97 Rt. END TAPER

C = .9

76.0
C = 37.9 c.y.

210

205

200

13+90.97 Rt.

C = 2.6

40.97
C = 38.9 c.y.

205

200

13+50 Rt.

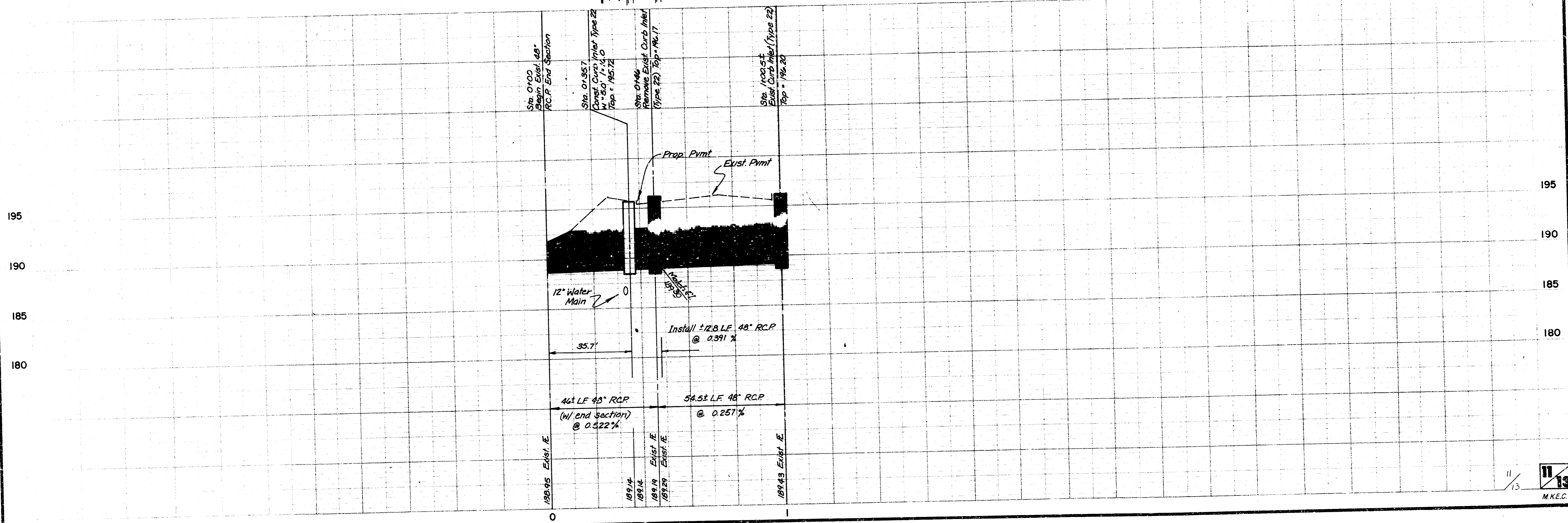
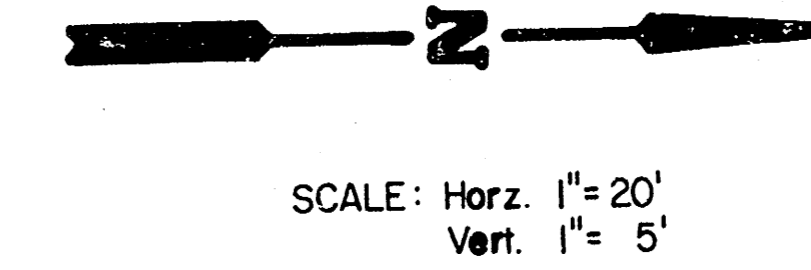
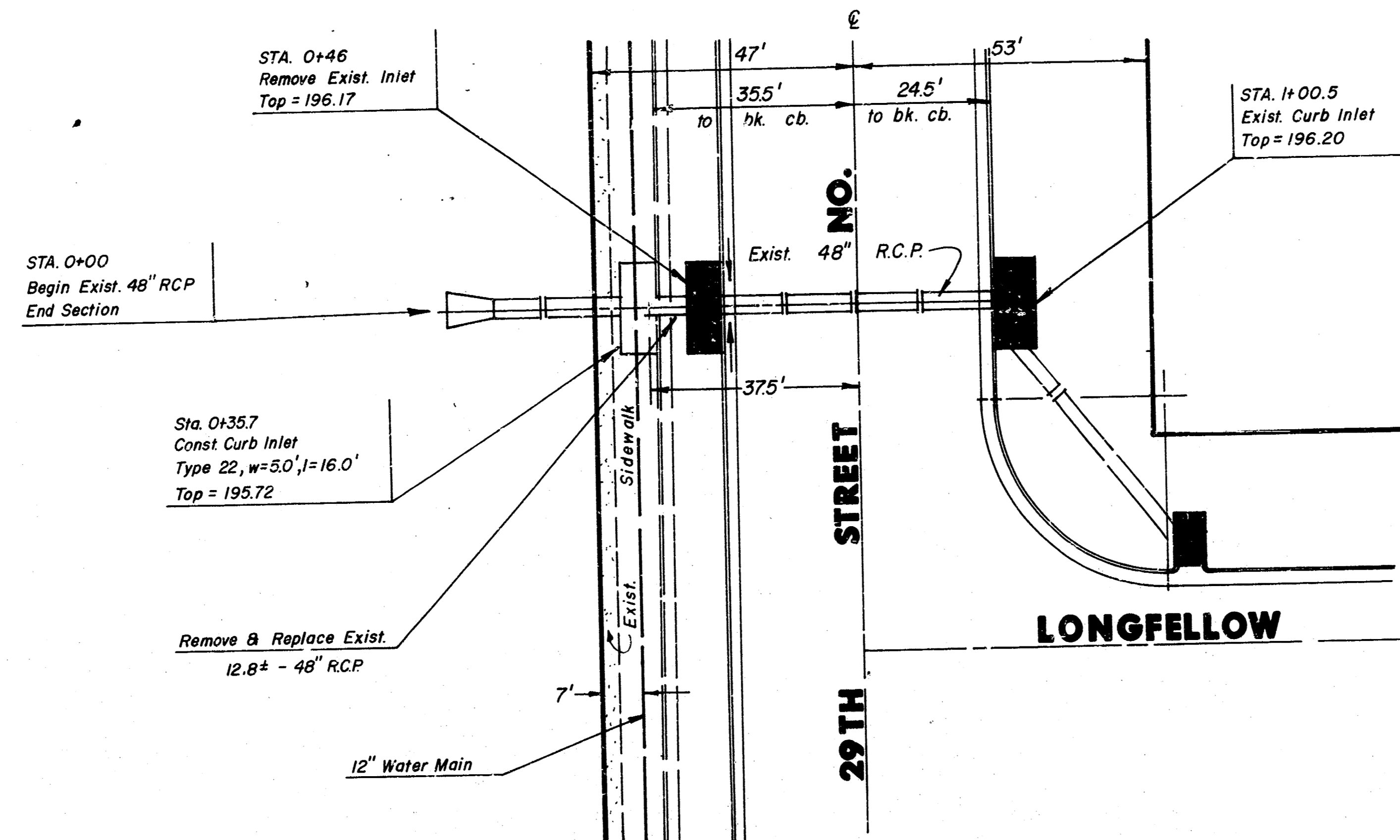
C = 25.3

520
C = 46.0 c.y.
Total Sheet
C = 123.4 c.y.

195

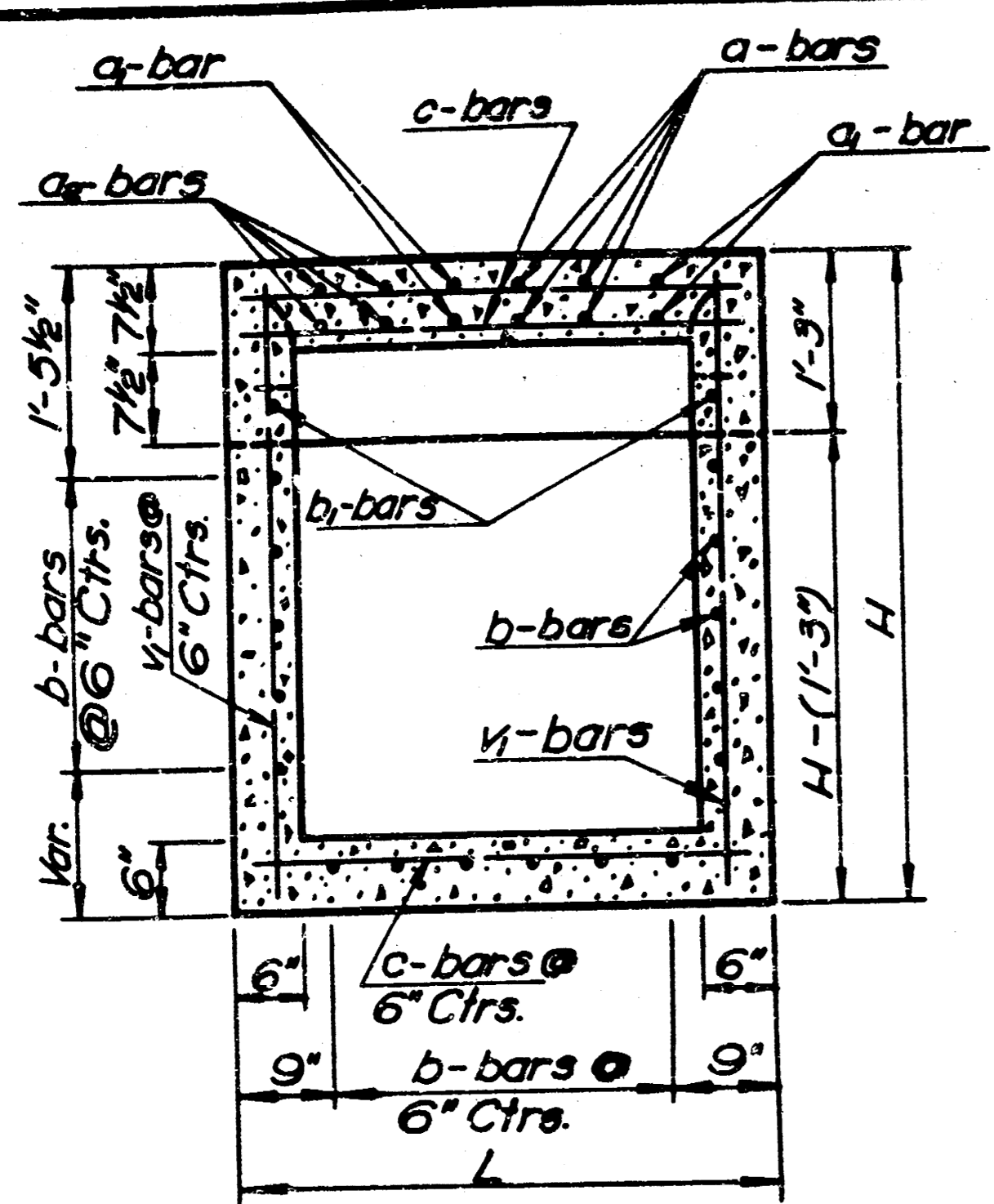
190

FILMED FROM THE BEST AVAILABLE COPY

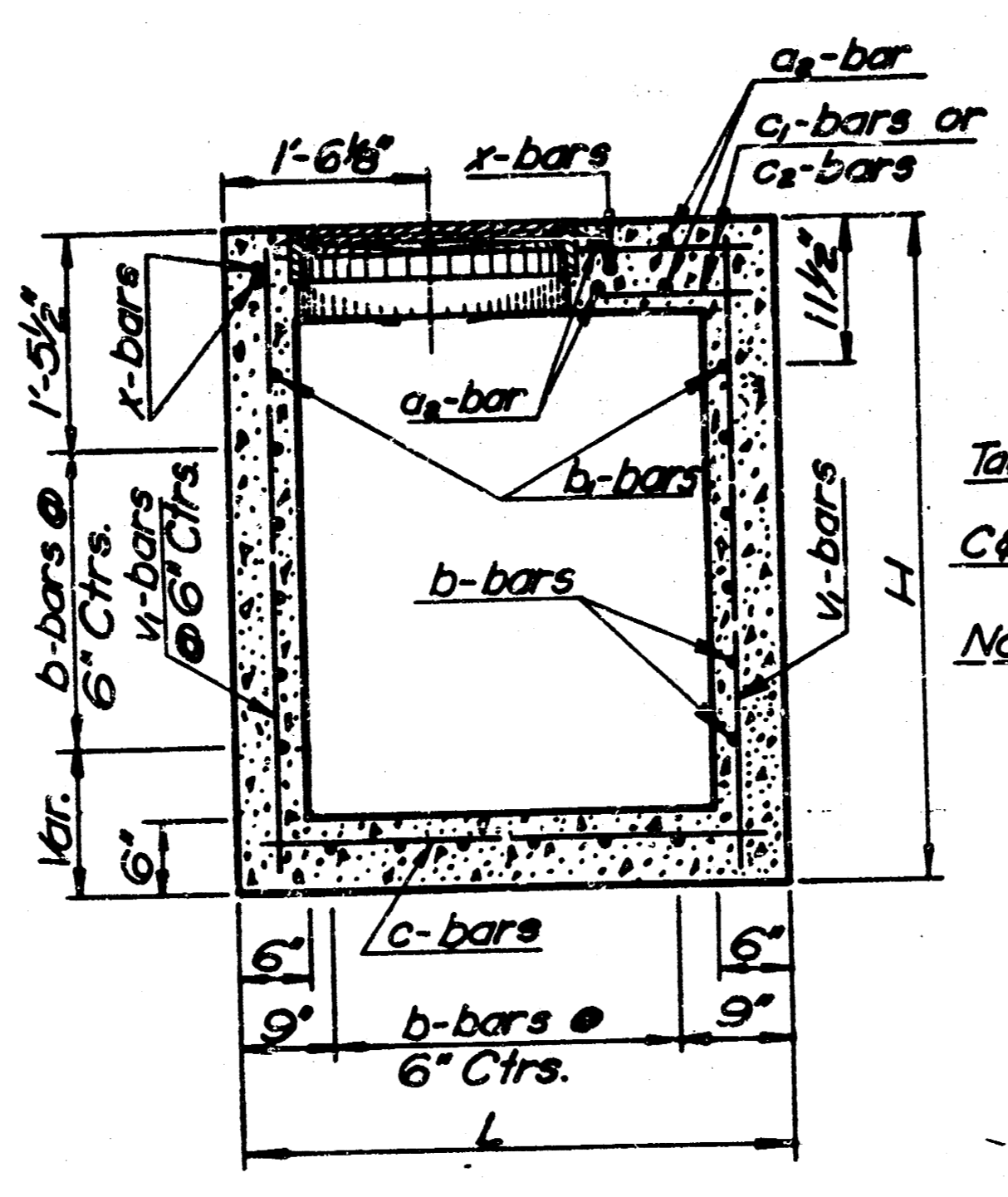


11/13
 M.K.E.C.

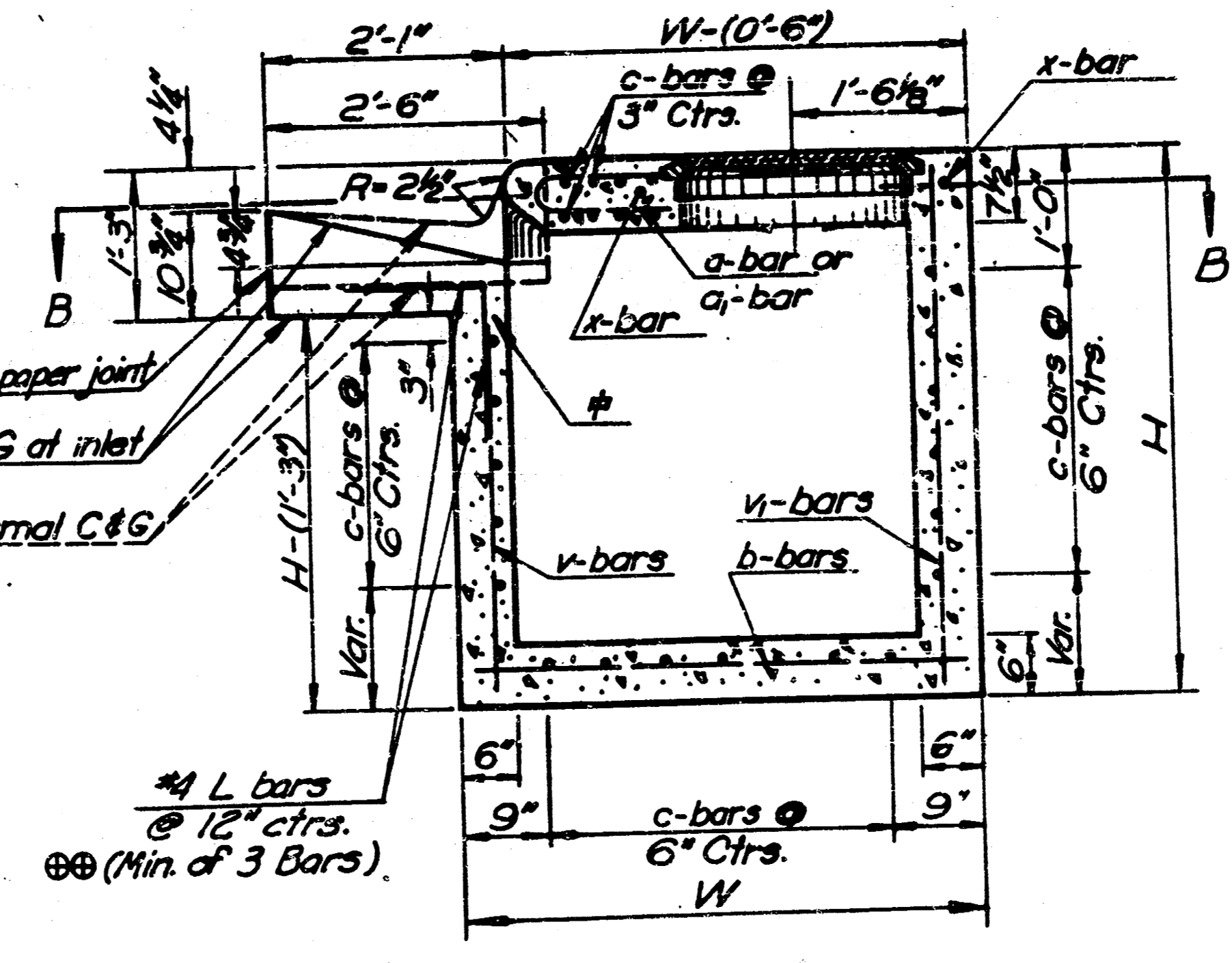
FILMED FROM THE BEST
 AVAILABLE COPY.....



SECTION D-D

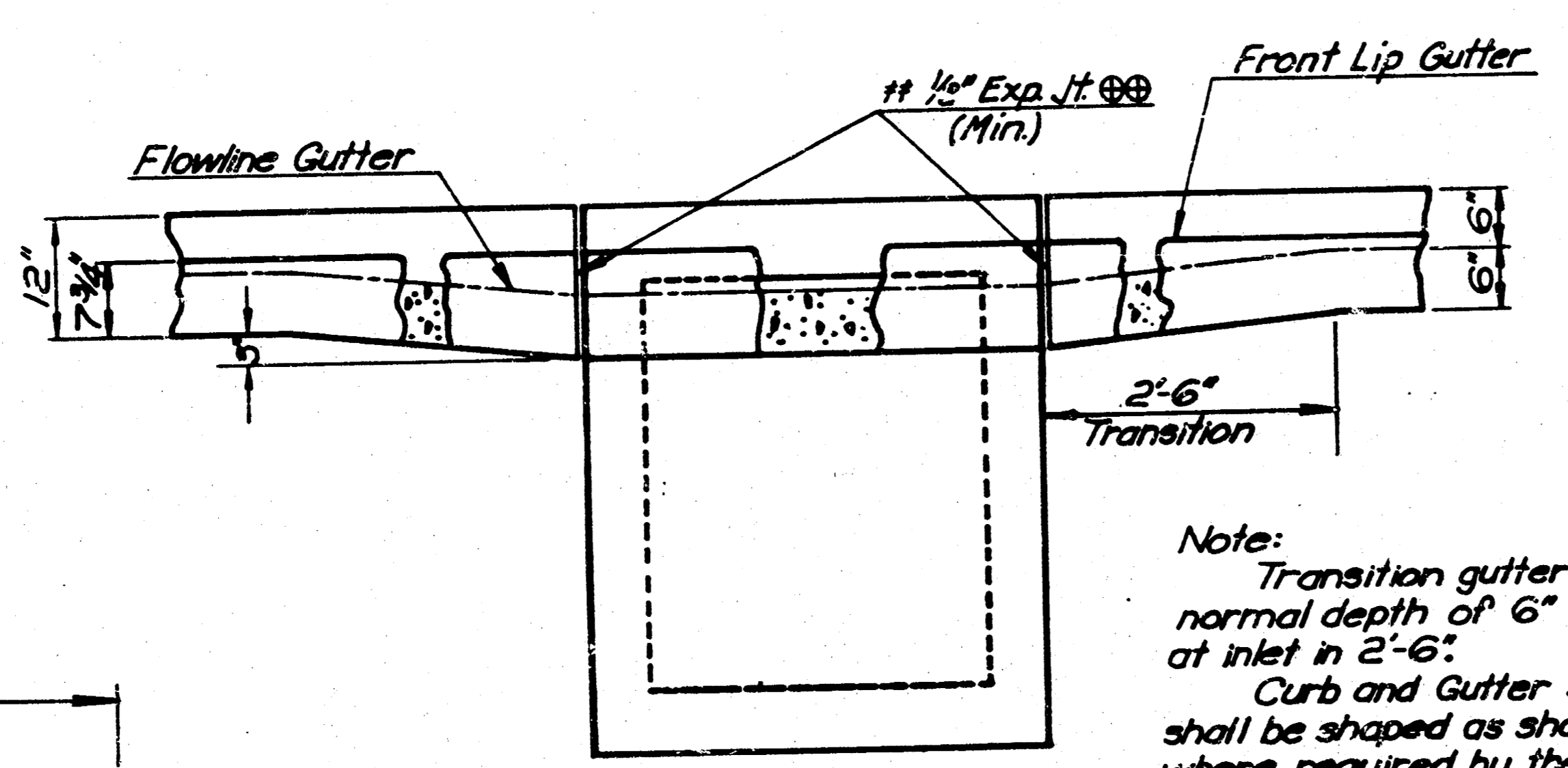


SECTION C-C

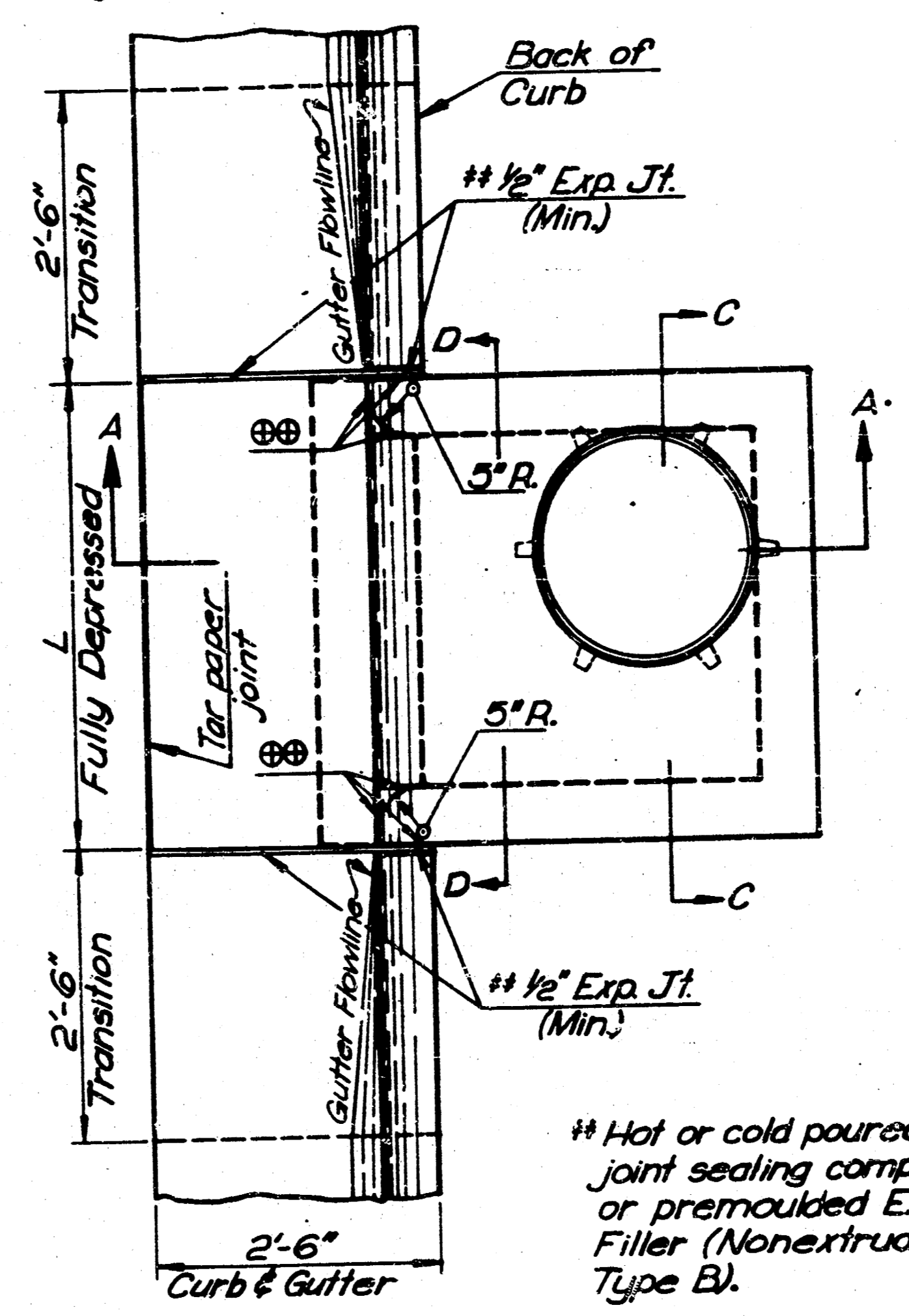


SECTION A-A

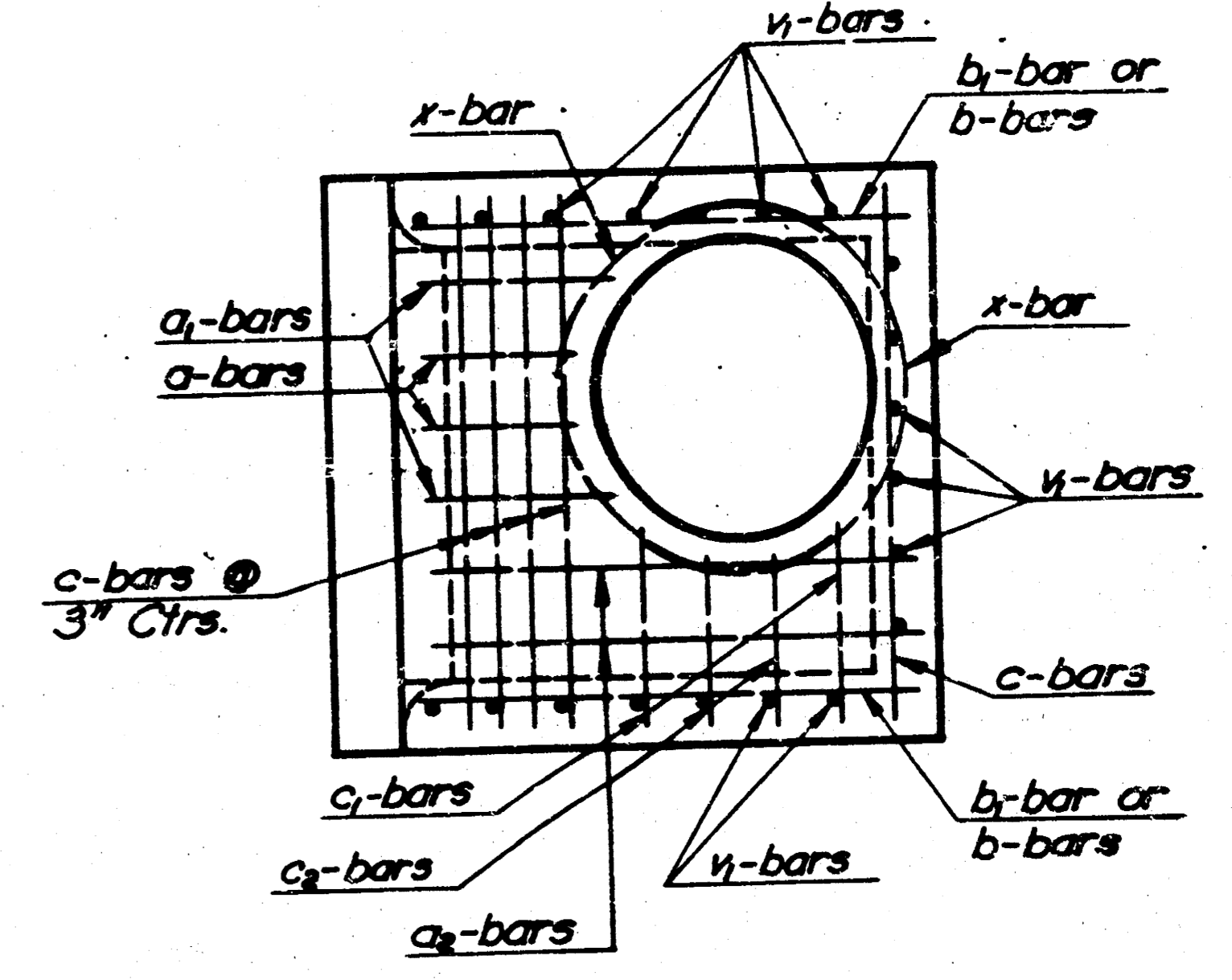
Optional construction joint (or tar paper joint) if gutter is constructed free from inlet.



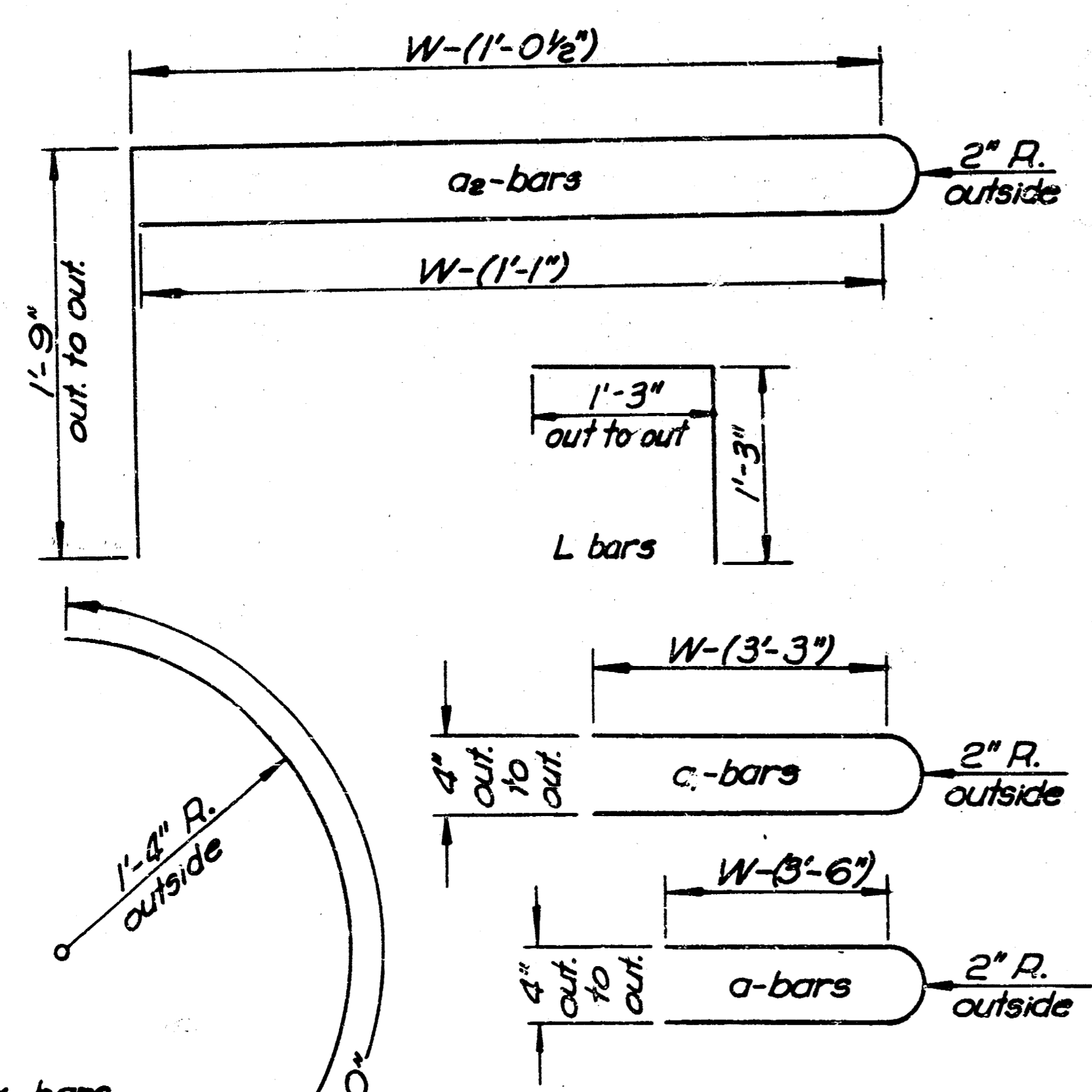
ELEVATION



PLAN

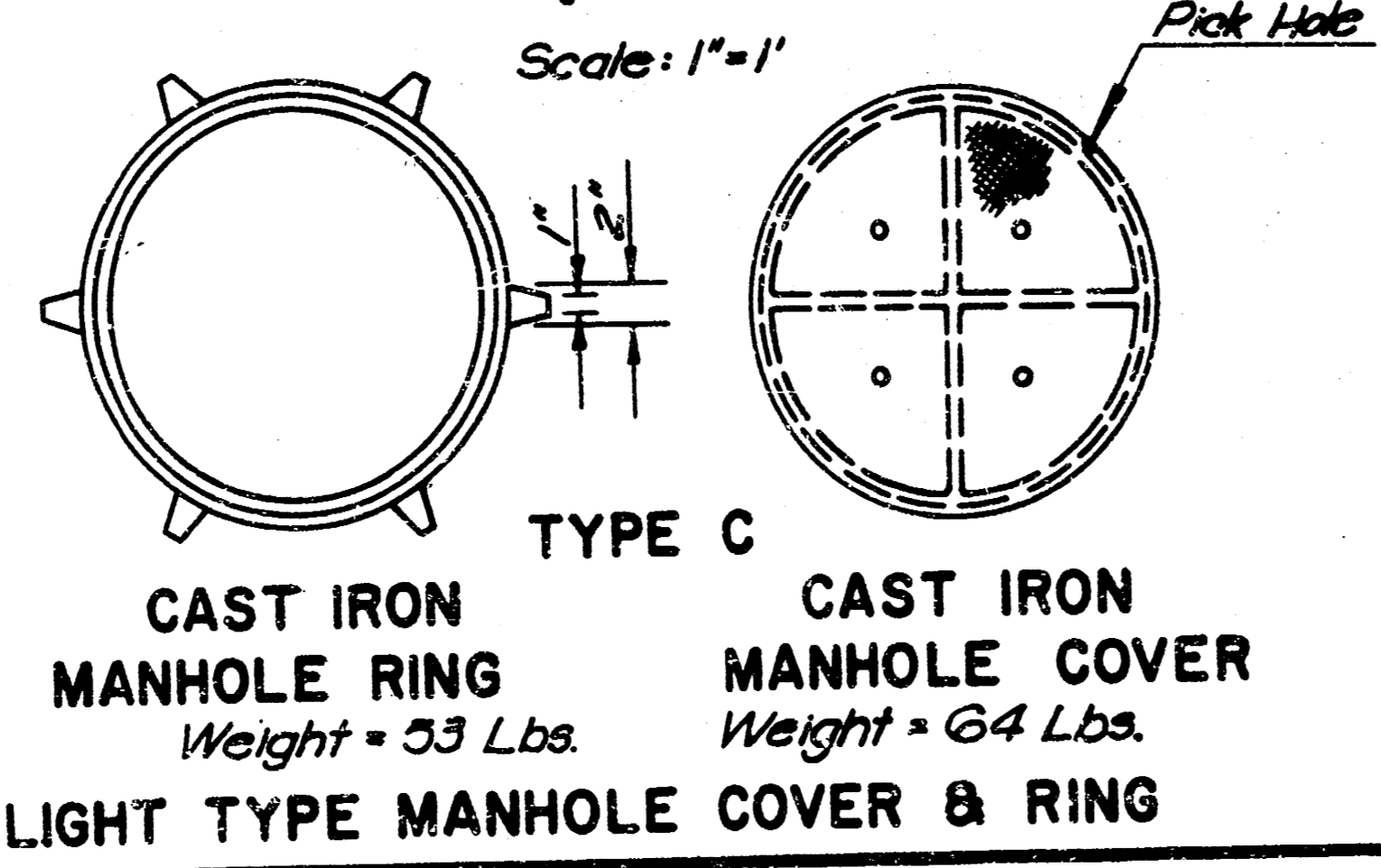
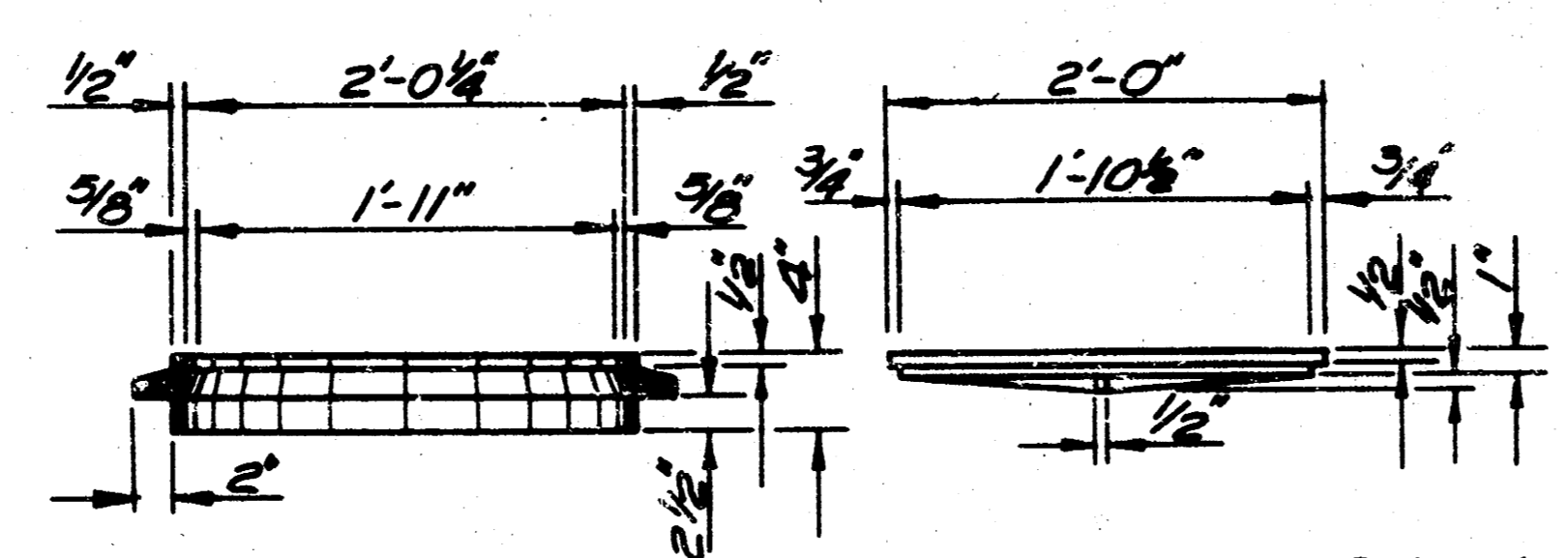


SECTION B-B



BENDING DIAGRAMS

Note: Reinforcing steel for L bars is not included in the steel quantity and is subsidiary to the other inlet items.



CAST IRON MANHOLE RING Weight = 33 Lbs.
CAST IRON MANHOLE COVER Weight = 64 Lbs.
LIGHT TYPE MANHOLE COVER & RING

At the Contractor's option, gutter may be constructed continuous, L bars omitted, and a 1/2" Expansion joint installed between gutter and face of inlet and between curb and side of inlet with a tar paper joint between bottom of gutter and top of wall. In this method of construction, the inlet shall be completely free of the gutter and curb.

* 3/4" Scale except where noted.

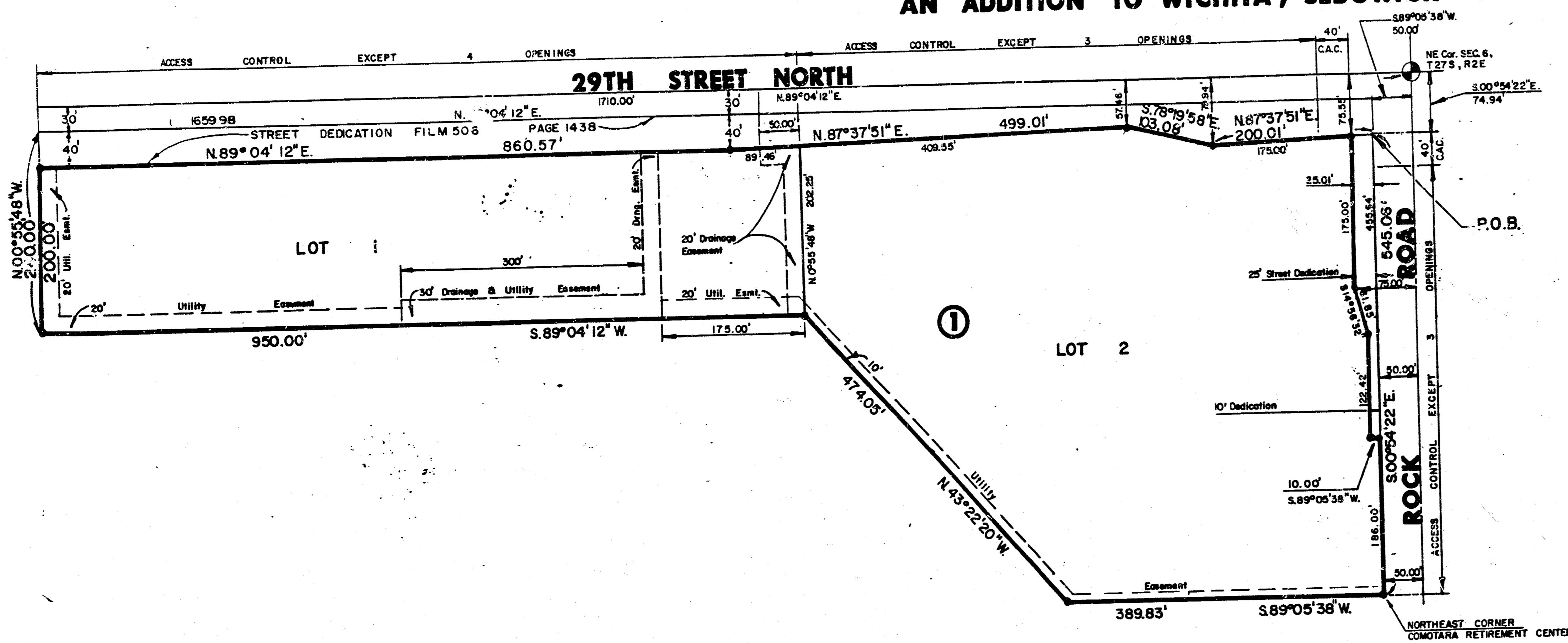
NO.	DATE	REVISIONS	BY	APP'D
KANSAS DEPARTMENT OF TRANSPORTATION				
TYPE 22 CURB INLET				
12/13				
				12
				13

FILMED FROM THE BEST AVAILABLE COPY

M-2 4-23
811

FINAL PLAT OF JEFF AND JAY ADDITION

AN ADDITION TO WICHITA, SEDGWICK COUNTY, KANSAS



NOTE: Setbacks Are As Per C.U.P. DP-108

Scale: 1" = 100'
LEGEND
• = Iron
CAC = Complete Access Control

745452

I, Kenneth H. Bengtson, a Civil Engineer in Kansas, do hereby certify that I have been in responsible charge of surveying and platting of "JEFF AND JAY ADDITION", an addition to Wichita, Sedgwick County, Kansas into lots, a block and a street, the same being accurately set forth in the accompanying plat and described as follows:

A tract of land lying in the northeast quarter of Section 6, Township 27 South, Range 2 East of the 6th P.M. beginning at a point S 00° 54' 22" E, 74.94 feet; thence S 89° 05' 38" W, 50.00 feet from the northeast corner of said quarter section; thence S 00° 54' 22" E, 545.06 feet to the northeast corner of Comotara Retirement Center, an addition to Wichita, Sedgwick County, Kansas; thence S 89° 05' 38" W, 389.83 along the north line of said City, Kansas; thence N 00° 55' 48" W, 474.05 feet; thence S 89° 04' 12" W, 950.00 feet; thence N 00° 55' 48" W, 200.00 feet; thence N 89° 04' 12" E, 860.57 feet; thence N 87° 37' 51" E, 499.01 feet; thence S 78° 19' 58" E, 103.08 feet; thence N 87° 37' 51" E, 200.01 feet to the point of beginning, containing 12.1 acres more or less.

I hereby certify that the details of this plat are correct to the best of my knowledge and belief this 27th day of April, 1985.

Kenneth H. Bengtson
Kenneth H. Bengtson
Mid-Kansas Engineering Consultants, P.A.
3500 W. Rock Road, Bldg. 800
Wichita, KS 67226



Know all men by these presents that we the undersigned property owners of the land as above set forth in the Civil Engineers Certificate, have caused the same to be surveyed and platted into lots, a block, and a street, the same to be known as "JEFF AND JAY ADDITION" an addition to Wichita, Sedgwick County, Kansas. Easements for the construction and maintenance of public utilities and drainage, as indicated on the accompanying plat, are hereby granted to the City of Wichita. All abutters rights of access to or from the south right-of-way line of 29th Street North and the west right-of-way line of Rock Road are hereby granted to the City of Wichita, provided, however, that Lot 1, Block 1 shall have access to 29th Street North at four locations, and Lot 2, Block 1 shall have access to 29th Street North at three locations and to Rock Road at three locations to be determined by the Engineer of the City of Wichita. Building setbacks are per the ABK0 18 and 18A Community Unit Plan (DP-108) on file at the Wichita-Sedgwick County Planning Department office, 10th Floor, 455 N. Main, Wichita, Kansas.

Woodlawn Development Company, a Partnership

By: Donald J. Ablah
Donald J. Ablah, attorney in fact for Woodlawn Development Company

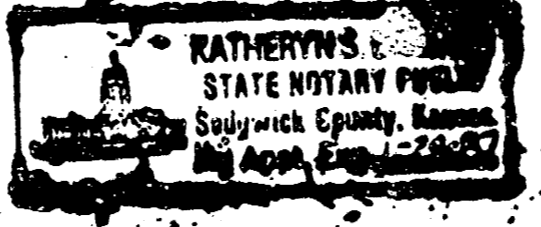
We, the First National Bank of St. Paul, mortgagees on the above described property, do hereby consent to the plat of "Jeff And Jay Addition."

THE FIRST NATIONAL BANK OF ST. PAUL
Phillip S. Frick
Phillip S. Frick
Attorney in Fact for First National Bank of St. Paul

STATE OF KANSAS SS:
COUNTY OF SEDGWICK

Be it remembered that on this 17th day of April, 1985 before me a Notary Public in and for said State and County came the First National Bank of St. Paul, by Phillip S. Frick, Attorney in Fact for First National Bank of St. Paul, to me personally known to be the same person who executed the foregoing instrument of writing and duly acknowledged the execution of the same. In testimony whereof I have hereunto set my hand and affixed my notarial seal, in the day and year above written.

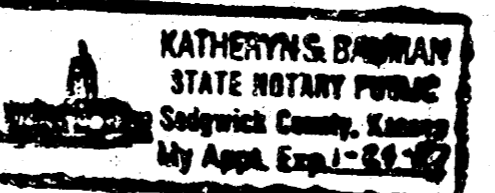
Katheryn S. Bauman, Notary Public
My Appointment Expires: 1-24-87



STATE OF KANSAS SS:
COUNTY OF SEDGWICK

Be it remembered that on this 17th day of April, 1985, before me, a Notary Public in and for said State and County, came Donald J. Ablah, attorney in fact for Woodlawn Development Company, on behalf of Woodlawn Development Company, to me personally known to be the same person who executed the foregoing instrument of writing and duly acknowledged the execution of the same. In testimony whereof I have hereunto set my hand and affixed my notarial seal the day and year above written.

Katheryn S. Bauman, Notary Public
My Appointment Expires: 1-24-87



The Wichita-Sedgwick County Metropolitan Area Planning Commission, Wichita, Kansas has received and approved this plat of "JEFF AND JAY ADDITION"

Dated this 21st day of March, 1985.

Wichita-Sedgwick County Metropolitan Area Planning Commission
James C. Wilson, Chairman
Robert A. Lakin, Secretary

This plat approved and all dedications shown hereon, if any, accepted by the City Commission of the City of Wichita, Kansas, this 30th day of April, 1985.

Donald J. Ablah, Mayor
Donald C. Gislak, City Clerk

Entered on transfer record this 13 day of May, 1985.

Don Wright, County Clerk

STATE OF KANSAS SS:
COUNTY OF SEDGWICK

This is to certify that this instrument was filed for record in the Register of Deeds Office at 11:00 AM this 13th day of May, 1985.

Pat Kettler, Register of Deeds
Ed Resa, Deputy



20.00

Continued on F 705 Pg 1459

13 13
10 4 3 10 13
M-2 4-23

FILMED FROM THE BEST AVAILABLE COPY