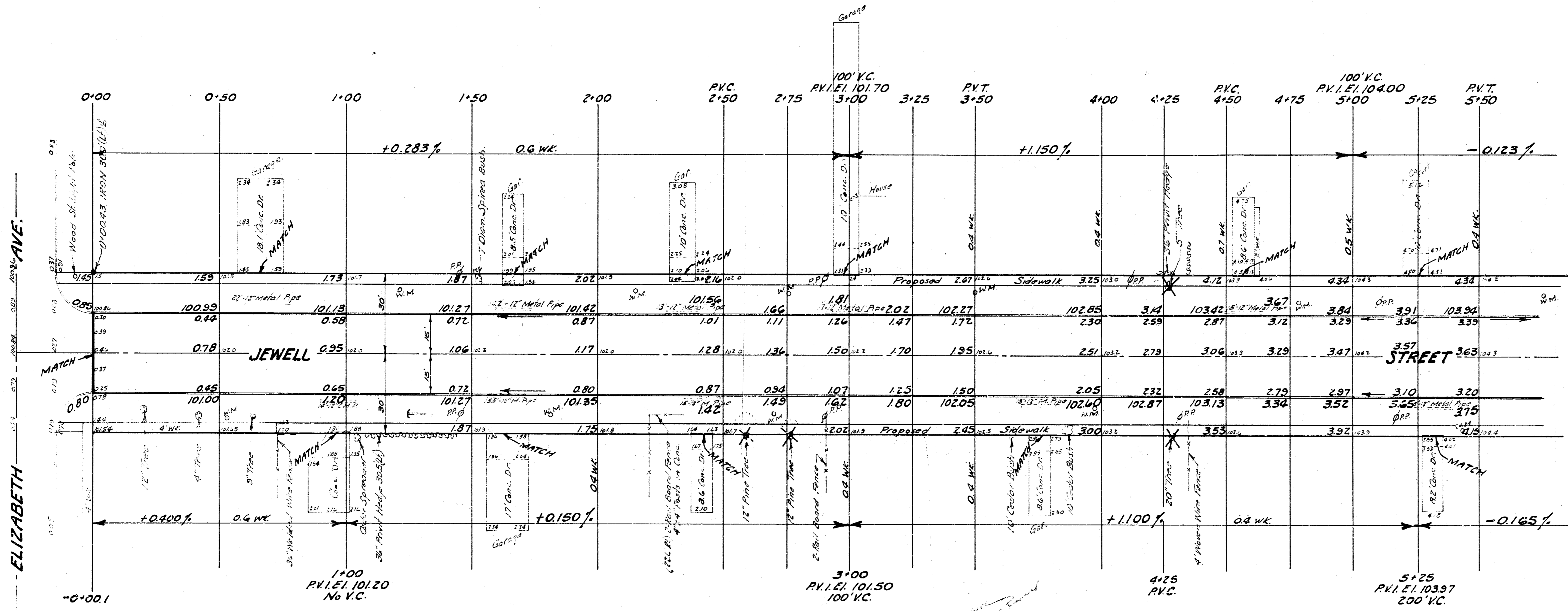


Scale - 1" = 20'

B.M. 10349 S.E. Corner conc. porch House #1326 Jewell.

NOTE:
Contractor to clear right-of-way and grade parkings for proposed sidewalk. Sidewalk to be constructed by others.



Surveyed by J.A. Smith
Checked by J.A. Smith

PROPERTY EXCAVATION
1937 Cu.Yds.
+10% 194
Total 2131 Cu.Yds.



JEWELL STREET
From E.L. ELIZABETH AVE.
to W.L. SENESA STREET
30' Concrete
B.E. SMITH CITY ENGINEER
CITY OF WICHITA KANSAS
Date Oct. 1967
Project No. C17-50

1/4

N
 3246-1720

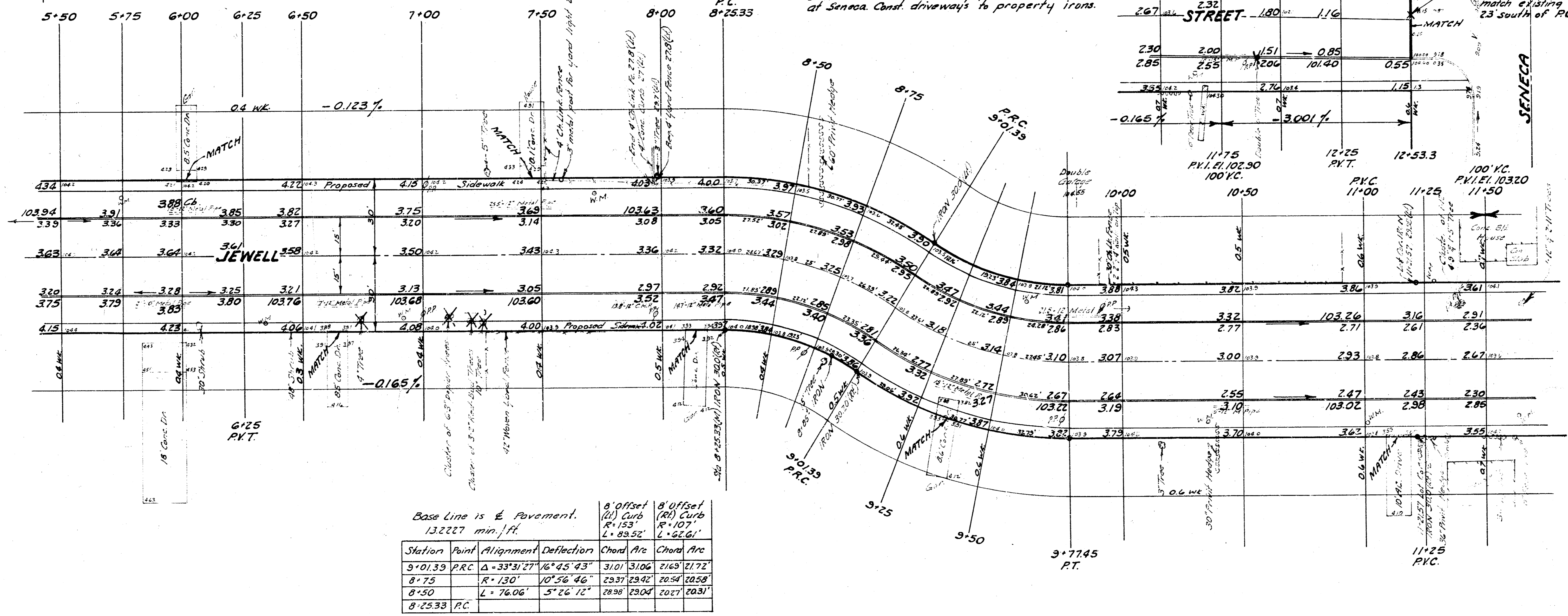
B.M. 104.58 R.R. Spike S. side P. pole
 on N. side Jewell Sta. 7+01

B.M. 103.39 S.E. cor. conc.
 porch House #1114 Jewell

Base Line is E Pavement
 13.2227 min./ft.

Station	Point	Alignment	Deflection	Chord	Arc	Chord	Arc
3+77.45	P.T.	$\Delta = 33^{\circ}31'27''$	$16^{\circ}45'43''$	21.55	21.60	32.25	32.31
3+50		$R = 130'$	$10^{\circ}42'45''$	28.54	28.58	29.37	29.42
3+25		$L = 76.06'$	$5^{\circ}12'11''$	18.40	18.43	27.73	27.73
3+01.39	P.R.C.						

NOTE:
 Const. put on a straight line from P.T. Sta.
 3+77.45 to match existing pavement (return
 at Seneca Const. driveways to property lines.



Base Line is E Pavement.
 13.2227 min./ft.

Station	Point	Alignment	Deflection	Chord	Arc	Chord	Arc
3+01.39	P.R.C.	$\Delta = 33^{\circ}31'27''$	$16^{\circ}45'43''$	31.01	31.06	21.63	21.72
3+75		$R = 130'$	$10^{\circ}58'46''$	29.37	29.42	28.54	28.58
3+50		$L = 76.06'$	$5^{\circ}22'12''$	28.54	28.58	29.37	29.42
3+25.33	P.C.						

