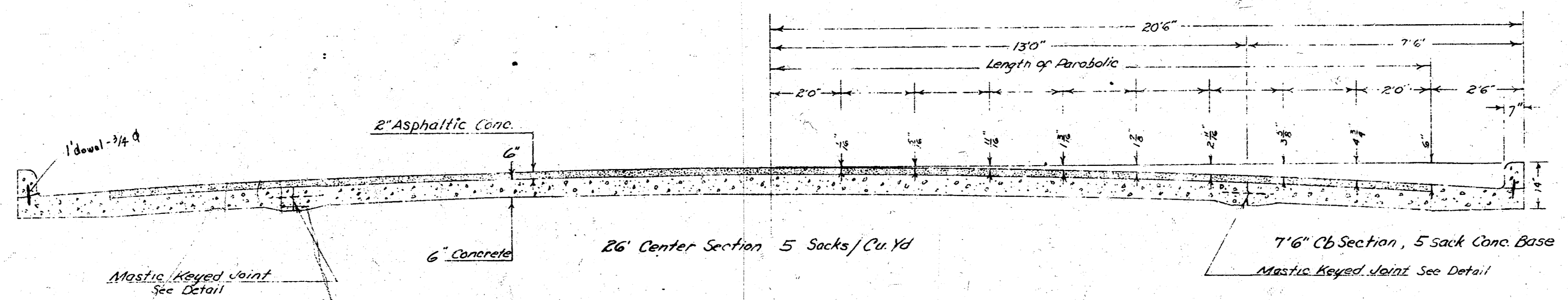
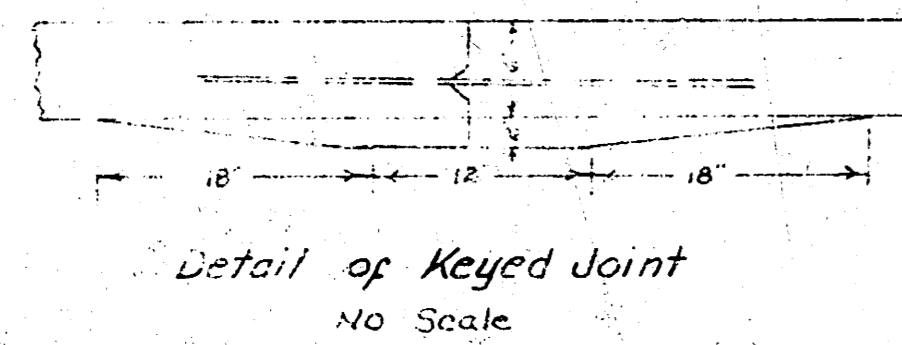


KANSAS
 SL NORTHERN TO NL INDUSTRIAL

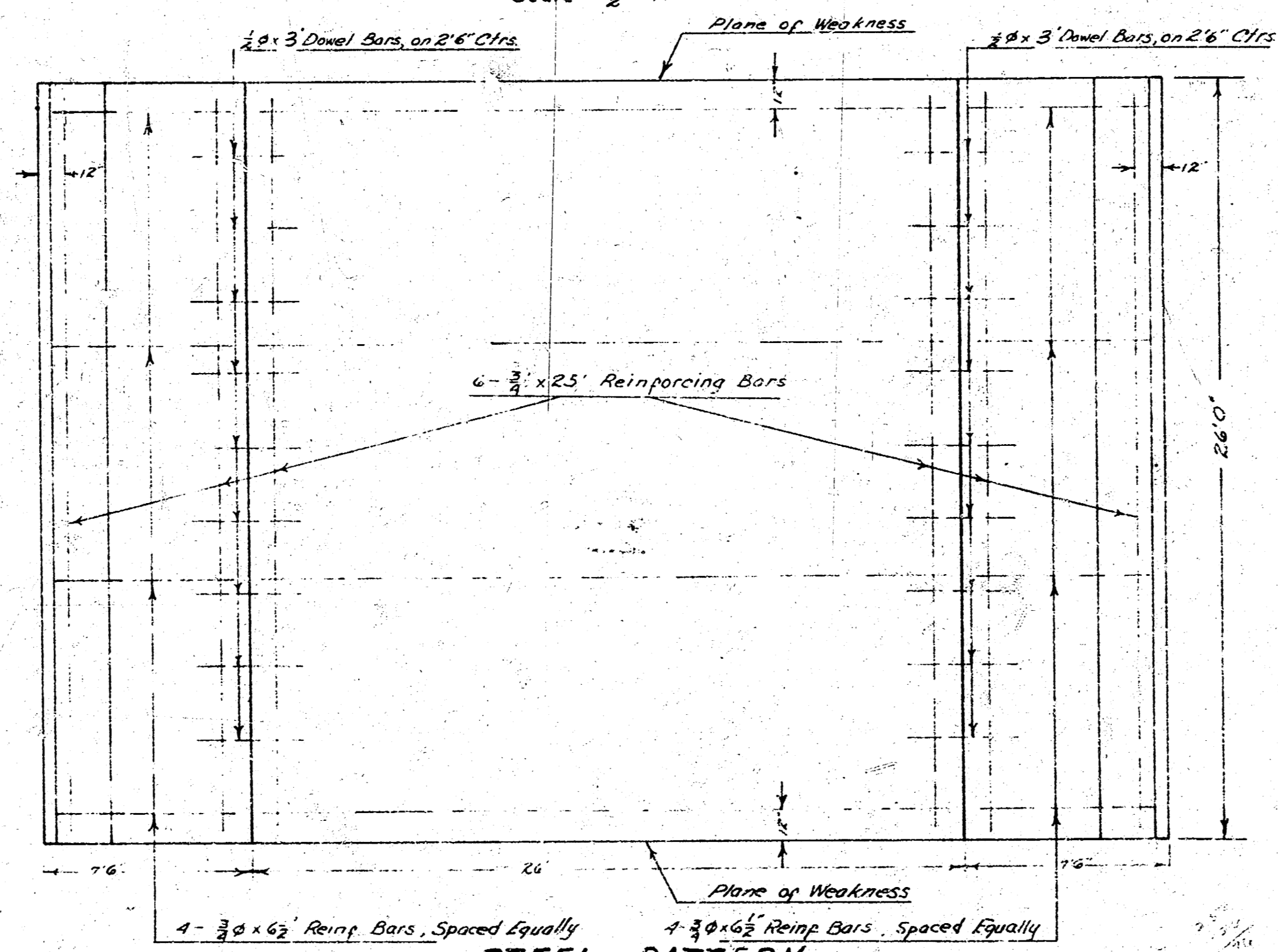


TYPICAL SECTION

Scale 1/2" = 1'

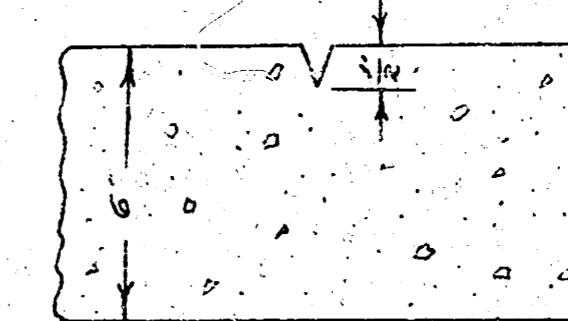


Detail of Keyed Joint
 No Scale



STEEL PATTERN

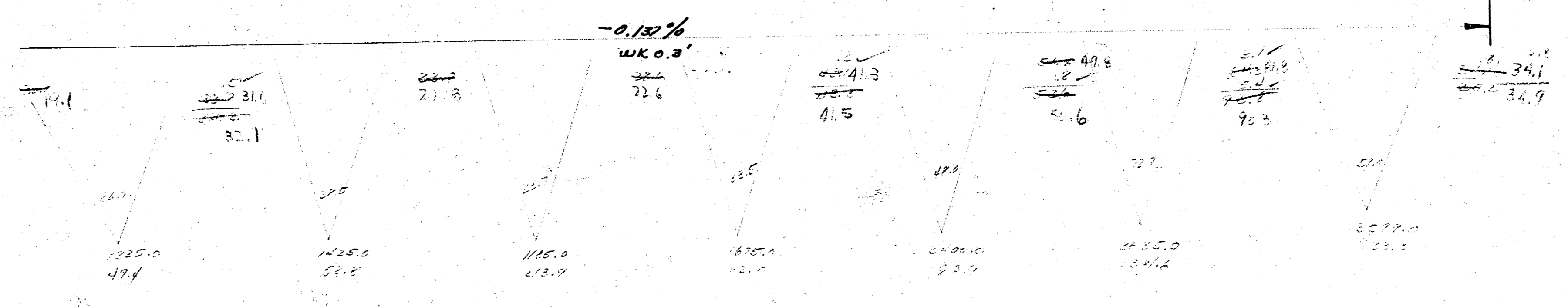
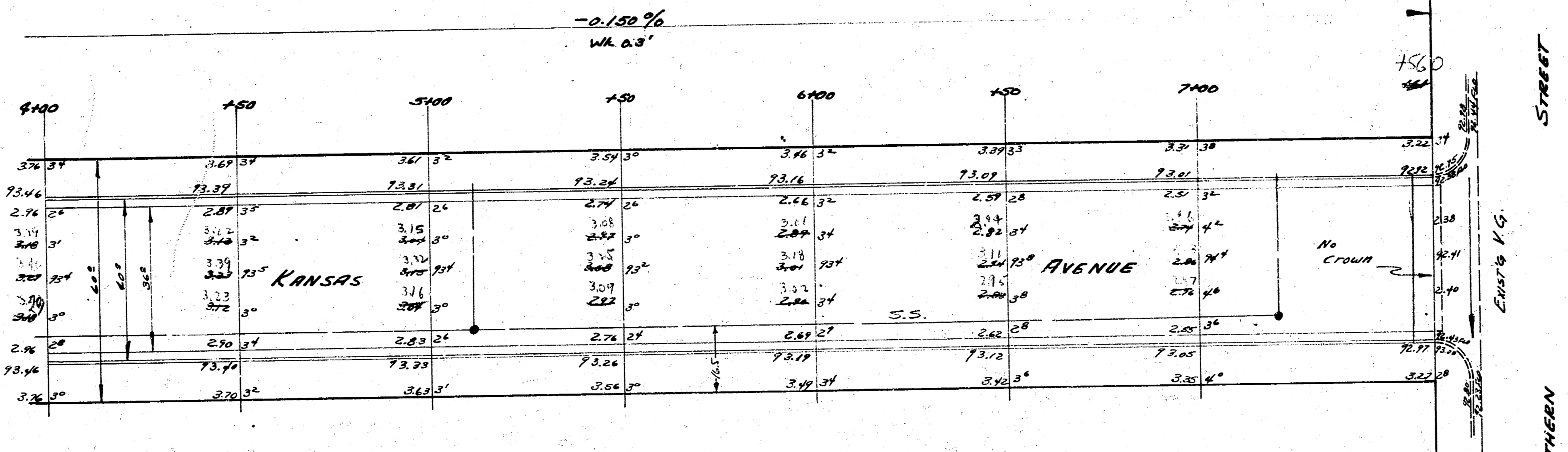
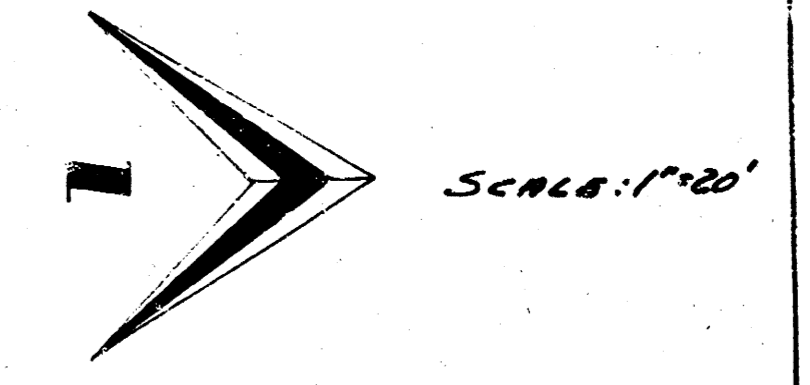
Scale 1" = 1'



Detail Plane of Weakness
 Plane of Weakness to be cut with
 Double-Ridge Groove to depth as
 shown in a straight line from
 curb to curb 26" off to c/c.

B.M. 12 1/2" R" IN RITCHIE S. END E. RETURN KANSAS / NORTHERN

NOTE: Base Line is @ Kansas



KANSAS AVENUE

