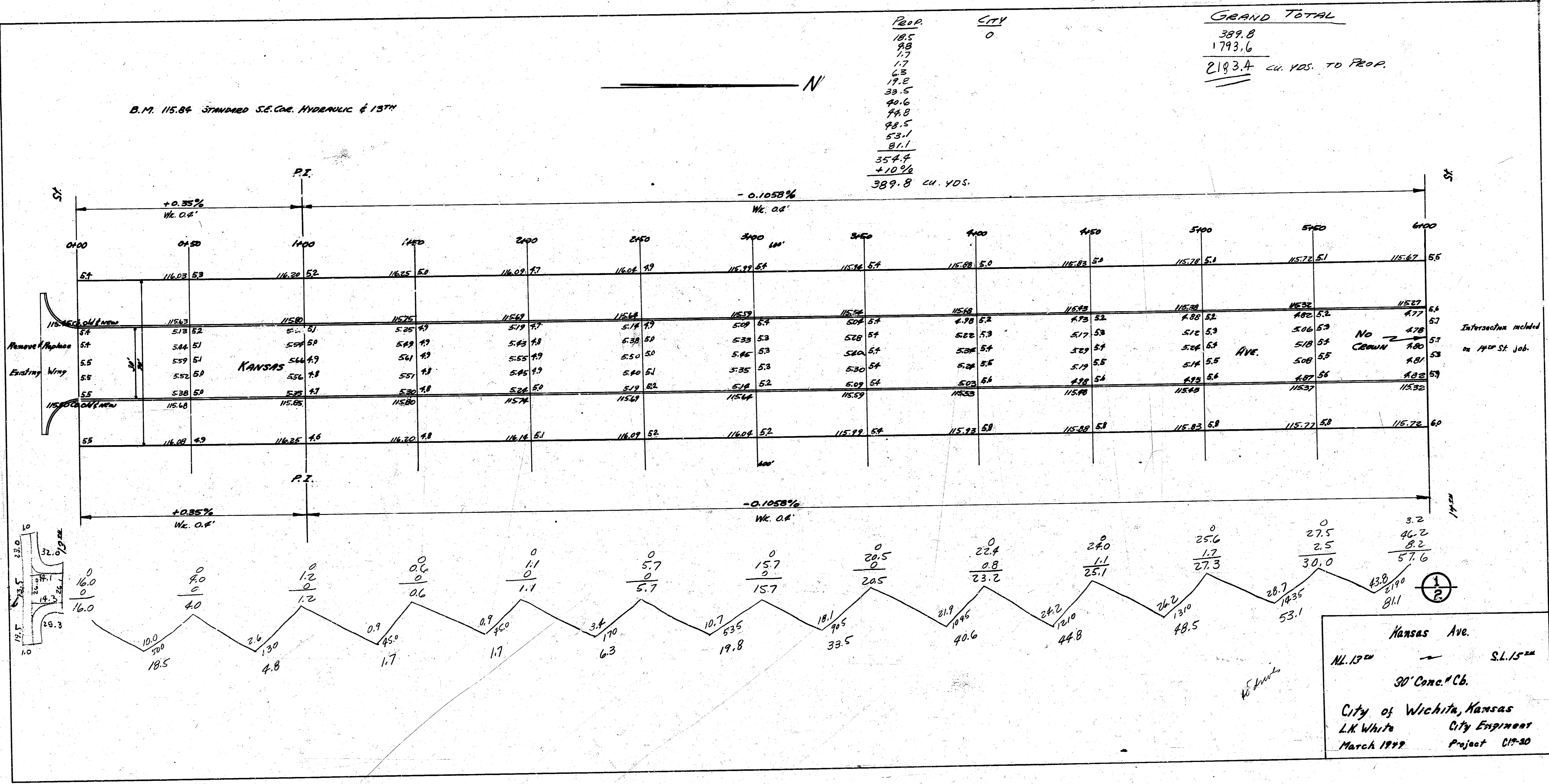


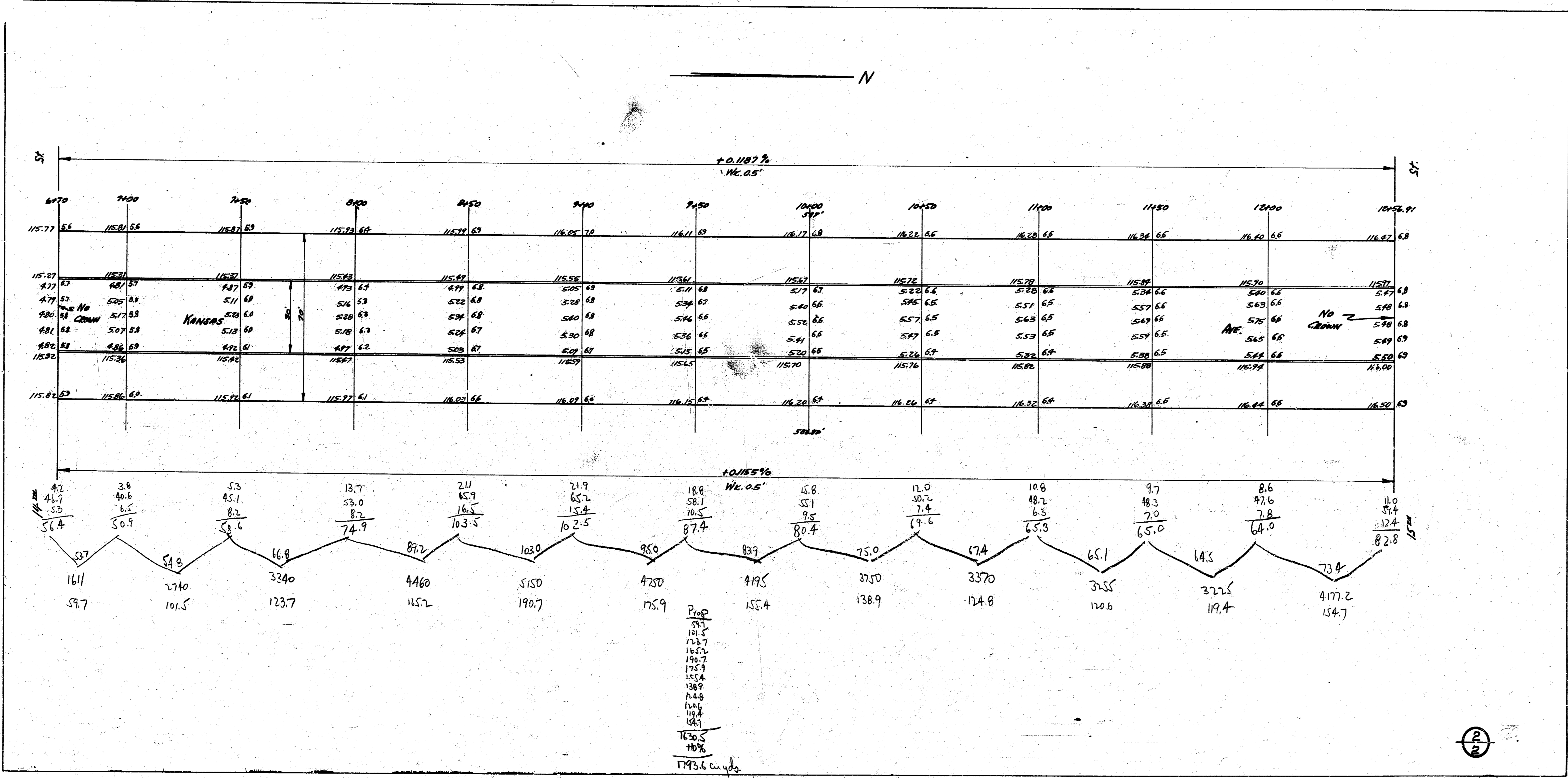
B.M. 115.84 STANDARD S.E. COR. HYDRAULIC & 1374

N

PROP.	CITY	GRAND TOTAL
18.5	0	389.8
9.8		1793.6
1.7		
4.3		
17.8		
33.5		
40.6		
78.8		
81.1		
53.1		
354.4		
+10.9%		
389.8	CU. YDS.	CU. YDS. TO PROP.



Kansas Ave.
 N.L. 13th S.L. 15th
 30' Conc. Cb.
 City of Wichita, Kansas
 L.K. White City Engineer
 March 1929 Project C17-20



Prop
 57
 113
 157
 162
 190.7
 175.9
 155.4
 138.9
 124.8
 119.4
 101.5
 59.7
 1795.6 cu yds