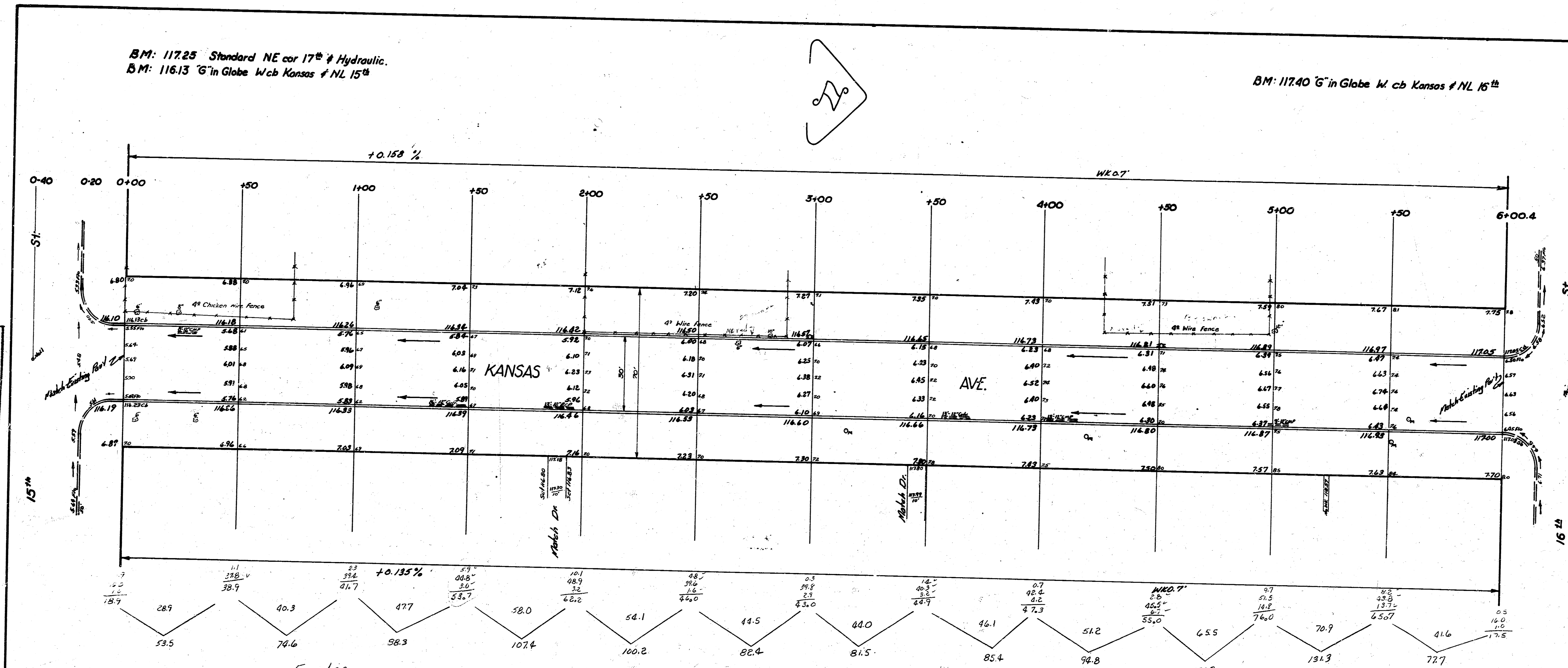


BM: 11725 Standard NE cor 17th & Hydraulic.
 BM: 11613 6" in Globe Wcb Kansas & NL 15th

BM: 11740 6" in Globe W cb Kansas & NL 16th

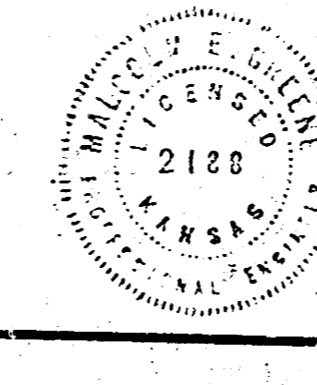
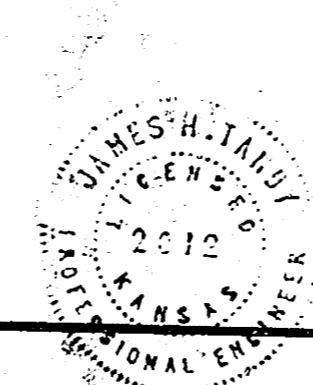


Checked
 Exc
 BN
 11/2/56

Excavation
 Property - 1883.9
 City - 0
 10% 1884
 2072.3 cu yds.

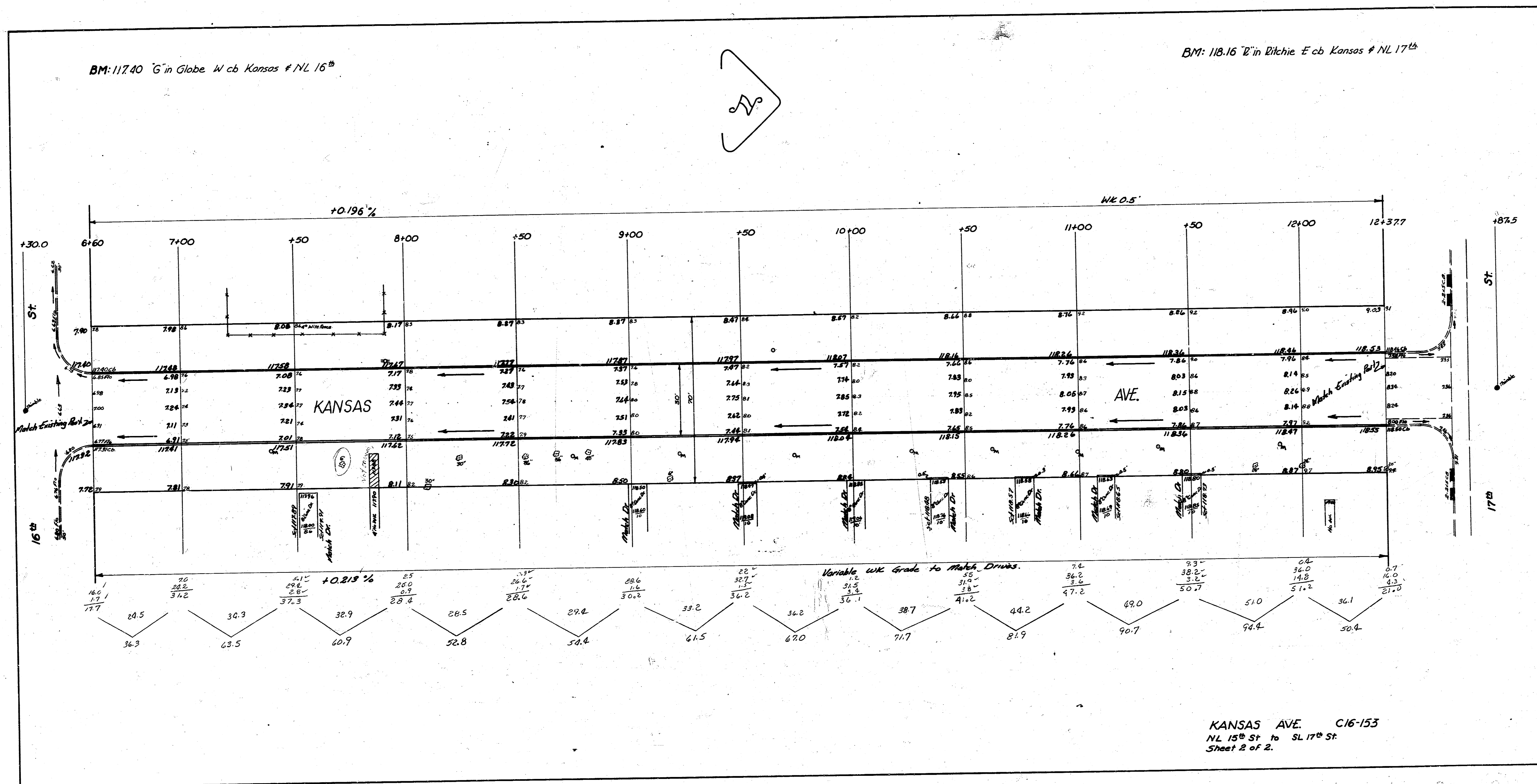
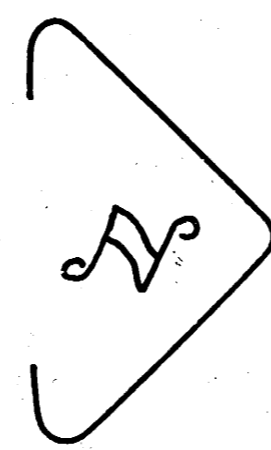
NOTICE TO CONTRACTOR:-
 All entrance pipes are to be disposed of
 in accordance with instructions of City
 Dirt Checker.

KANSAS AVE.
 NL 15th St to SL 17th St
 30' Conc. & Cb.
CITY OF WICHITA, KANSAS
 B.E. SMITH CITY ENGINEER
 Oct 1956 PROJ. NO. C16-153



BM: 11740 G in Globe W cb Kansas # NL 16th

BM: 11816 E in Ditchie E cb Kansas # NL 17th



KANSAS AVE. C16-153
NL 15th St to SL 17th St
Sheet 2 of 2.