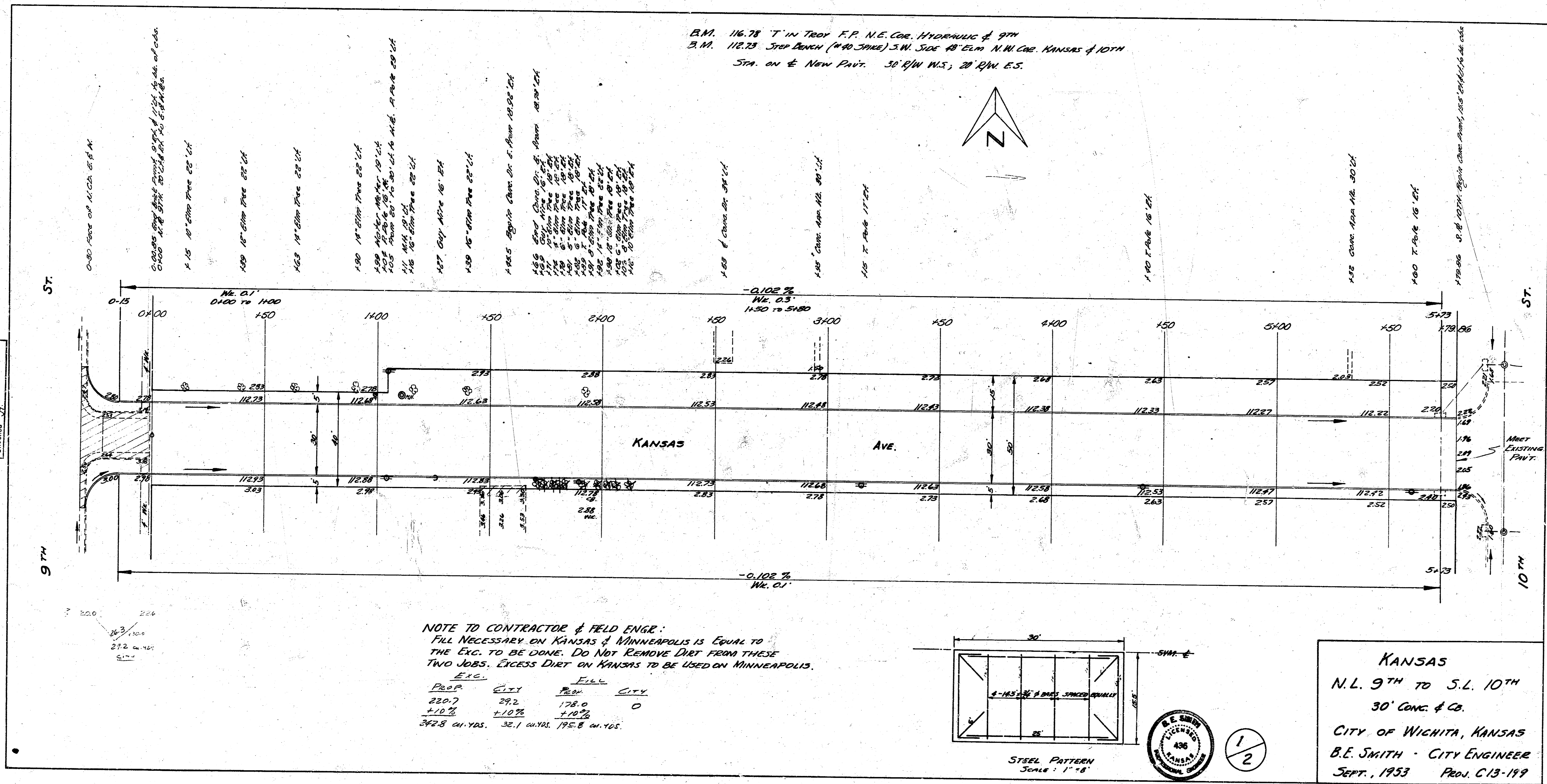


Survey J.L.V. BK 6677
 Plan 5
 Exc. 5
 Checked 5/27

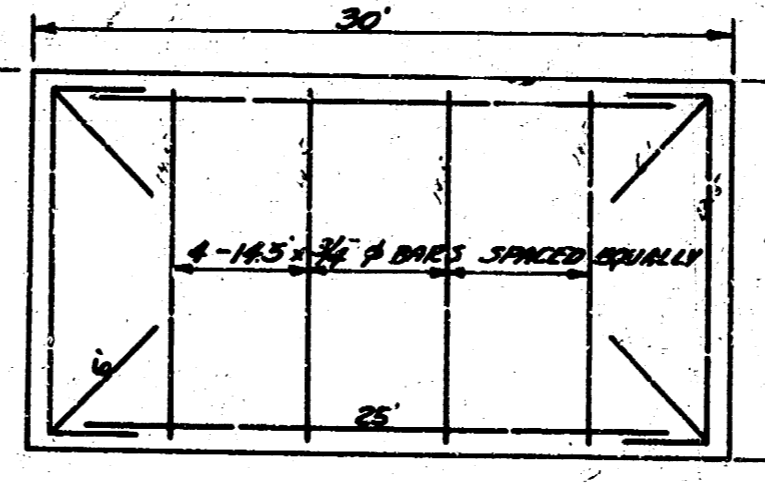


B.M. 116.78 T in Troy F.P. N.E. Cor. HYDRAULIC & 9TH
 B.M. 112.23 STEP BENCH (WAD SPRING) S.W. Side 48' Elm N.W. Cor. KANSAS & 10TH
 STA. on E. New Pavt. 30' R/W N.S.; 20' R/W E.S.



NOTE TO CONTRACTOR & FIELD ENGR:
 FILL NECESSARY ON KANSAS & MINNEAPOLIS IS EQUAL TO
 THE EXC. TO BE DONE. DO NOT REMOVE DIRT FROM THESE
 TWO JOBS. EXCESS DIRT ON KANSAS TO BE USED ON MINNEAPOLIS.

EXC.		FILL	
PROP.	CITY	PROP.	CITY
220.7	29.2	178.0	0
+10%	+10%	+10%	0
342.8 cu. yds.	32.1 cu. yds.	195.8 cu. yds.	



STEEL PATTERN
 SCALE: 1" = 6'



1/2

KANSAS
 N.L. 9TH TO S.L. 10TH
 30' CONC. & CB.
 CITY OF WICHITA, KANSAS
 B.E. SMITH - CITY ENGINEER
 SEPT., 1953 PROJ. C13-199