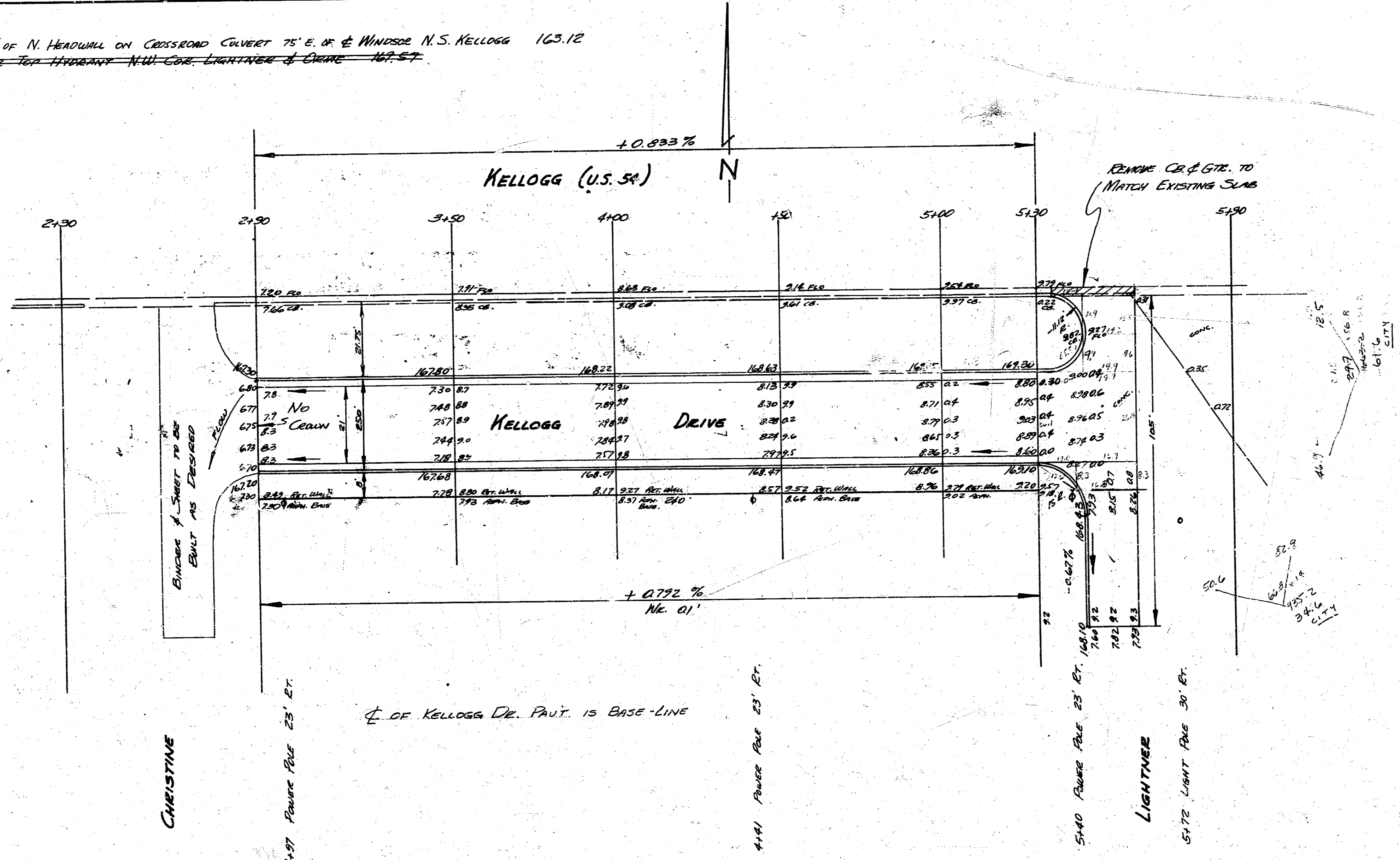


B.M. 'X' on NW Cor. of N. HEADQUARTERS ON CROSSROAD CURVED 75' E. of & WINDSOR N.S. KELLOGG 163.12
~~B.M. 'M' in NW COR. of N.W. COR. LIGHTNER & DRIVE 167.57~~

Exc. TO CITY
 61.6
 34.2
 96.2
 110.70
 105.8 in. 105.



5 1/2 INT. KELLOGG & LIGHTNER
 6" CONC. PROJ. C11-287
 KELLOGG DR.
 E. L. CHRISTINE TO W. L. LIGHTNER
 21-2-25 A.C.
 CITY OF WICHITA, KANSAS
 L. K. WHITE CITY ENGINEER
 NOV. 1951 PRIVATE JOB