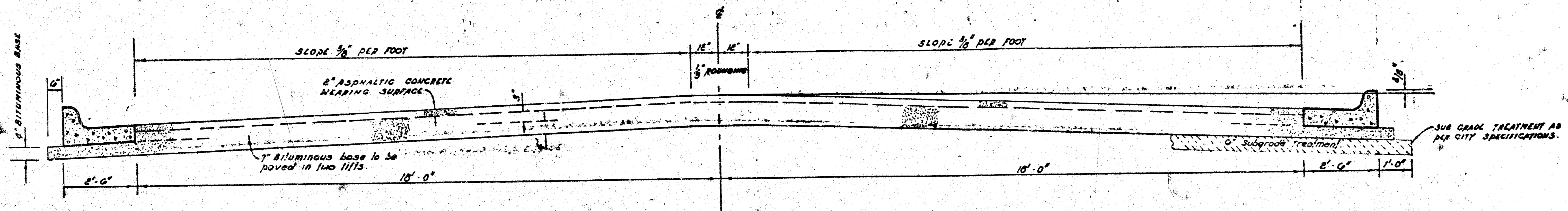


O'NEIL

E. L. RIDGE ROAD TO E. L. WILLOW-ESQUE 3RD
PROJECT No. 472-76-245-80842-000-000-001



TYPICAL SECTION

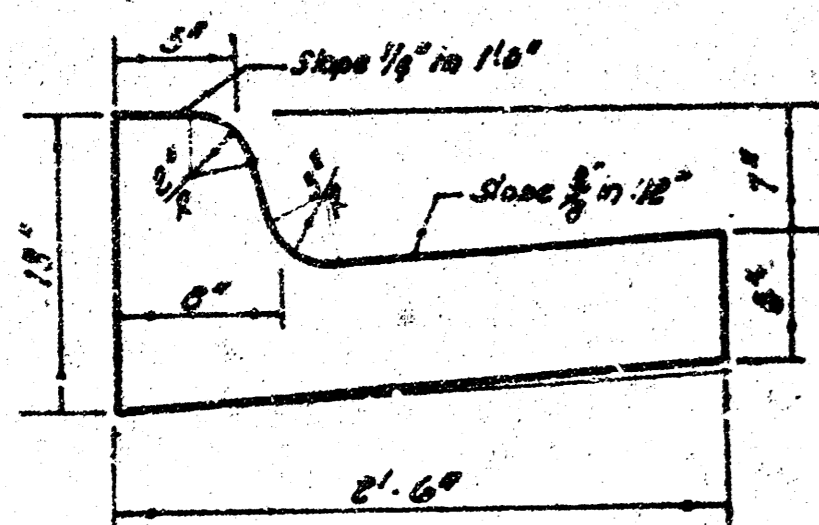
The A.C. pavement between the curb & gutter shall be paid as 30 yds 9" A.C. pavement (7" bituminous base). The bituminous base under the curb & gutter shall be paid as 30 yds 4" bituminous base.

41' ASPHALTIC CONCRETE PAVEMENT WITH BITUMINOUS BASE

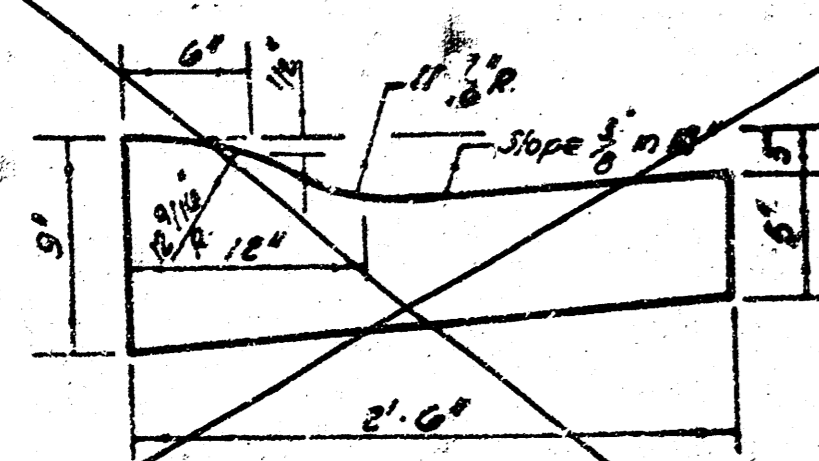
A TACK COAT OF EMULSIFIED ASPHALT (SS-1H) SHALL BE APPLIED AT AN APPROXIMATE RATE 0.05 GALLONS PER SQ. YD. BETWEEN LIFTS OF ASPHALTIC MATERIALS WHEN ORDERED BY THE ENGINEER. TACK COAT WILL NOT BE PAID FOR DIRECTLY AND SHALL BE CONSIDERED AS SUBSIDIARY TO PRICE BID FOR ASPHALTIC PAVEMENT.

BITUMINOUS BASE AND ASPHALTIC CONCRETE WEARING SURFACE SHALL BE PLACED WITH A LAYDOWN MACHINE HAVING AUTOMATIC CONTROLS FOR CROWN AND GRADE. CONSTRUCTION JOINTS IN EACH LIFT SHALL BE STAGGERED A MINIMUM DISTANCE OF 1' WITH JOINTS IN PRECEDING LIFTS AND SUCH THAT A JOINT WILL BE CONSTRUCTED ON THE PAVEMENT CENTERLINE IN THE TOP LIFT.

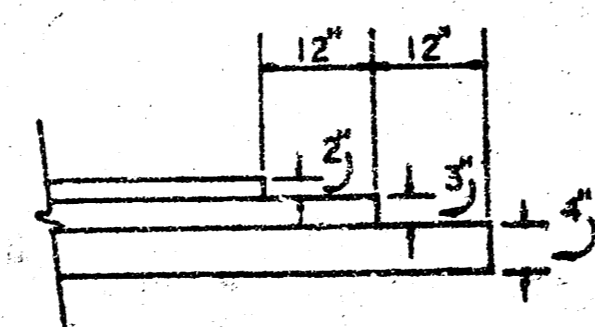
COMBINED CURB & GUTTER



ROLL TYPE CURB & GUTTER



DETAIL OF TRANSVERSE CONSTRUCTION JOINTS



TRANSVERSE CONSTRUCTION JOINTS SHALL BE CONSTRUCTED IN FLEXIBLE BASE PAVEMENTS AT LOCATIONS WHERE PAVEMENT TEMPORARILY ENDS TO FACILITATE FUTURE PAVEMENT CONSTRUCTION AS SHOWN BY DETAIL. THE COST OF CONSTRUCTING THE TRANSVERSE CONSTRUCTION JOINTS SHALL NOT BE MEASURED OR PAID FOR DIRECTLY BUT SHALL BE INCLUDED IN THE BID PRICE FOR SQUARE YARDS OF ASPHALTIC CONCRETE PAVEMENT.



CITY OF WICHITA, KANSAS

DEPARTMENT of PUBLIC WORKS - Engineering Division.

D.S. SELLERS ACTING CITY ENGINEER

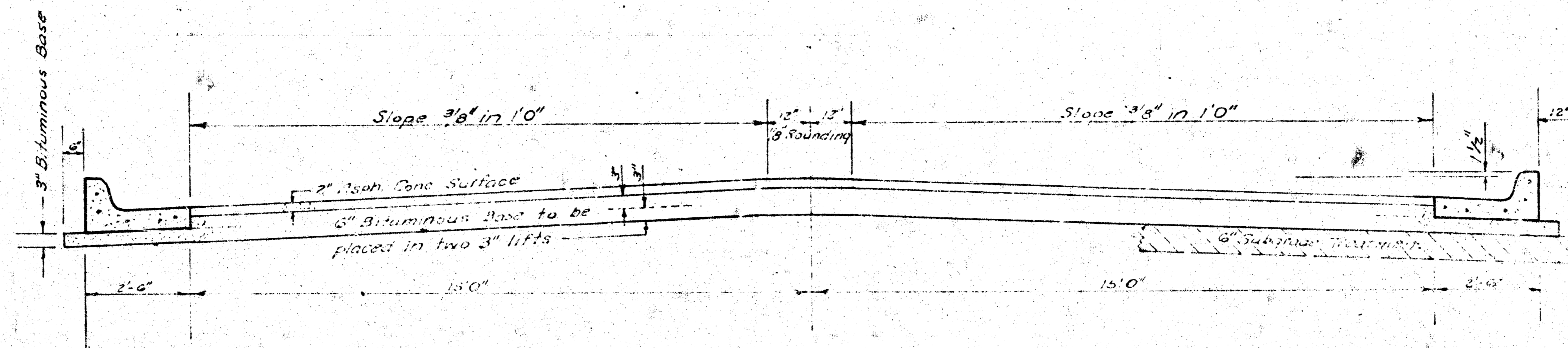
DATE

1/6

1/4

SUMMITLAWN

N.L. TARABURY LN. TO S.L. O'NEIL
PROJECT No. 472-76-245-80842-000-000-001



TYPICAL SECTION

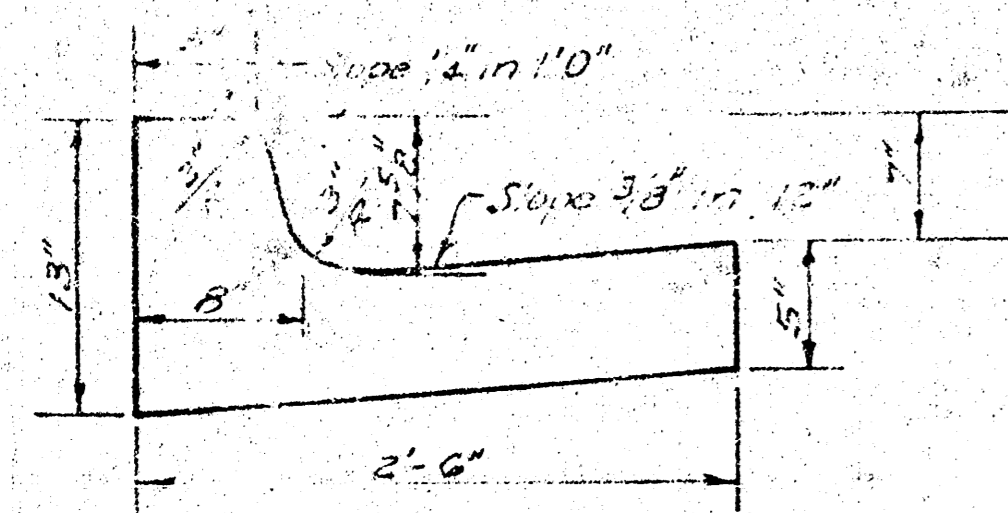
35' ASPHALTIC CONCRETE PAVEMENT WITH BITUMINOUS BASE

A TACK COAT OF EMULSIFIED ASPHALT (SS-1H) SHALL BE APPLIED AT AN APPROXIMATE RATE 0.05 GALLONS PER SQ YD BETWEEN LIFTS OF ASPHALTIC MATERIALS WHEN ORDERED BY THE ENGINEER. TACK COAT WILL NOT BE PAID FOR DIRECTLY AND SHALL BE CONSIDERED AS SUBSIDIARY TO PRICE BID FOR ASPHALTIC PAVEMENT.

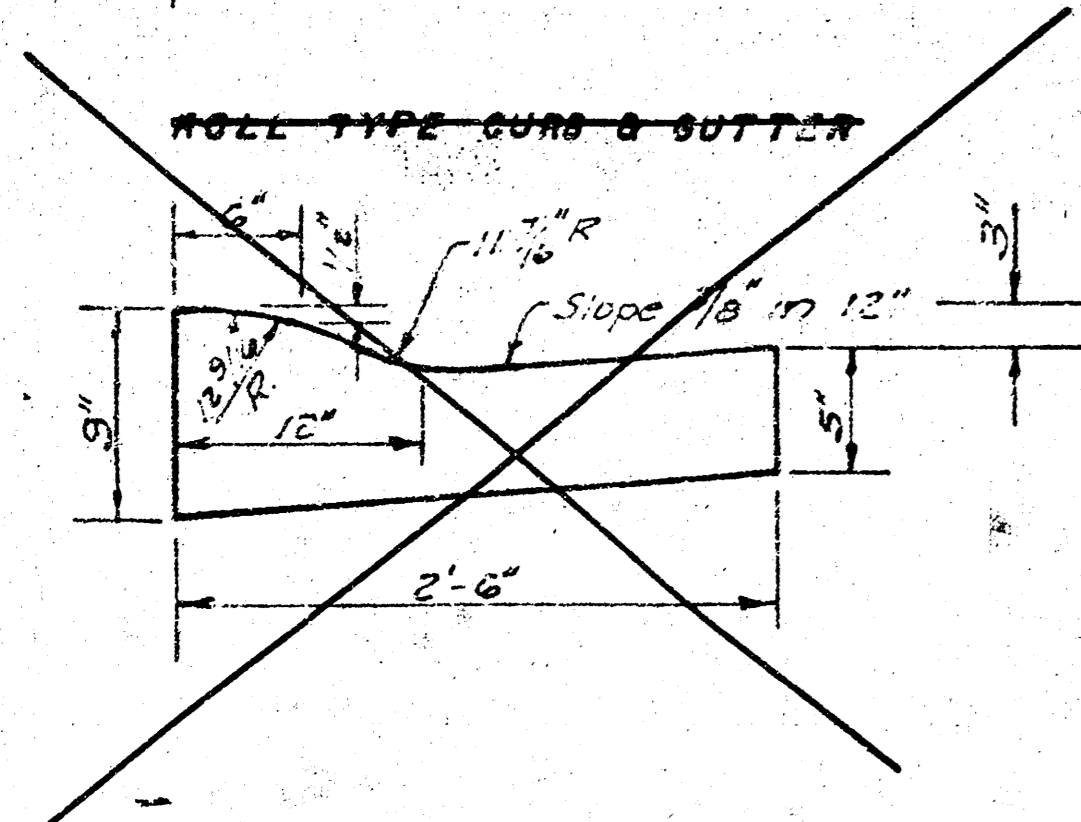
BITUMINOUS BASE AND ASPHALTIC CONCRETE WEARING SURFACE SHALL BE PLACED WITH A LAYDOWN MACHINE HAVING AUTOMATIC CONTROLS FOR CROWN AND GRADE. CONSTRUCTION JOINTS IN EACH LIFT SHALL BE STAGGERED A MINIMUM DISTANCE OF 1' WITH JOINTS IN PRECEDING LIFTS AND PLACED SUCH THAT A JOINT WILL BE CONSTRUCTED ON THE CENTERLINE IN THE TOP LIFT.

The A.C. Pavement between the curb and gutter shall be paid as Spalls 8" A.C. Pavement (6" Bituminous Base). The Bituminous Base under the curb and gutter shall be paid as Squids 3" Bituminous Base.

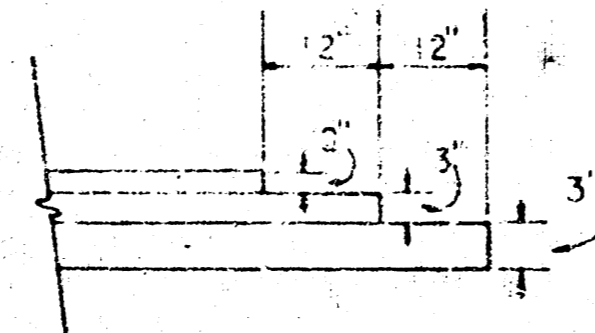
CONTINUED CURB & GUTTER



~~ROLL TYPE CURB & GUTTER~~



DETAIL OF TRANSVERSE CONSTRUCTION JOINTS



TRANSVERSE CONSTRUCTION JOINTS SHALL BE CONSTRUCTED IN FLEXIBLE BASE PAVEMENTS AT LOCATIONS WHERE PAVEMENT TEMPORARILY ENDS TO FACILITATE FUTURE PAVEMENT CONSTRUCTION AS SHOWN BY DETAIL. THE COST OF CONSTRUCTING THE TRANSVERSE CONSTRUCTION JOINTS SHALL NOT BE MEASURED OR PAID FOR DIRECTLY BUT SHALL BE INCLUDED IN THE BID PRICE FOR SQUARE YARDS OF ASPHALTIC CONCRETE PAVEMENT.

CITY OF WICHITA KANSAS

DEPARTMENT of PUBLIC WORKS - Engineering Division.

D.S. SELLERS ACTING CITY ENGINEER

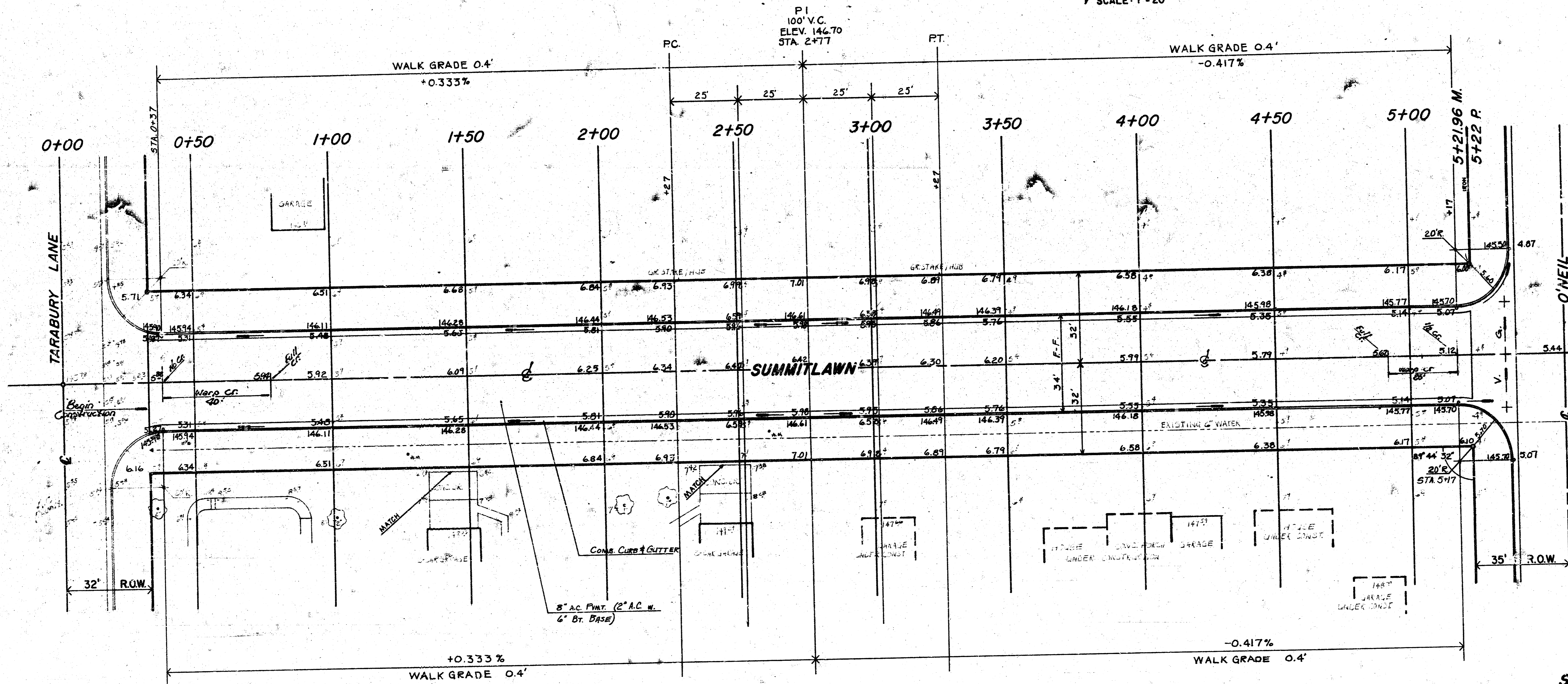
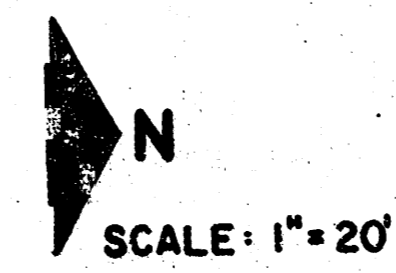
DATE _____

2/6

74

FILMED FROM THE BEST AVAILABLE COPY

B.M. 145.14 'H' TOP S.CB. TARABURY LANE 25' E. OF E.L. RIDGE ROAD.



SURVEY:
 DRAWN:
 CHECKED:

SUB-GRADE
 TYPE OF SUB-GRADE TREATMENT SHALL BE DETERMINED BY SOIL TESTS. SUB-GRADE TREATMENT SHALL BE AS FOLLOWS: 12 INCHES OF 2 1/2" GRADE, 12 INCHES OF 2 1/2" GRADE, 12 INCHES OF 2 1/2" GRADE, OR ANY COMBINATION OF THESE.

MANIPULATION= 3510 BY:

-LIMIT TO 11-20 FT DRIVES OR EQUIVALENT-

	EARTH WORK	
	PROPERTY	CITY
EXCAVATION	460.7cy	70.8cy
+10%	46.1cy	7.1cy
TOTAL	506.8cy	77.9cy
COMP. FILL	72.6cy	41.8cy
+10%	7.3cy	4.2cy
TOTAL	79.9cy	46.0cy
BORROW MATL	332.7cy	28.0cy
+10%	33.3cy	2.8cy
TOTAL	366.0cy	30.8cy

SUMMITLAWN
 N.L. TARABURY LN. TO S.L. O'NEIL
CITY OF WICHITA, KANSAS
 (34" F-F) 2" A.C. SURFACE-6" B.T. BASE
 WITH COMBINED CURB & GUTTER
 D.S. SELLERS ACTING CITY ENGINEER
 DATE:
 PROJ. NO. 472-76-245-80842-000-000-001 7/4

4/6

FILMED FROM THE BEST AVAILABLE COPY.....