

B.M. 16726 M in Mueller Fire plug NW Cor. Lightner & Orme

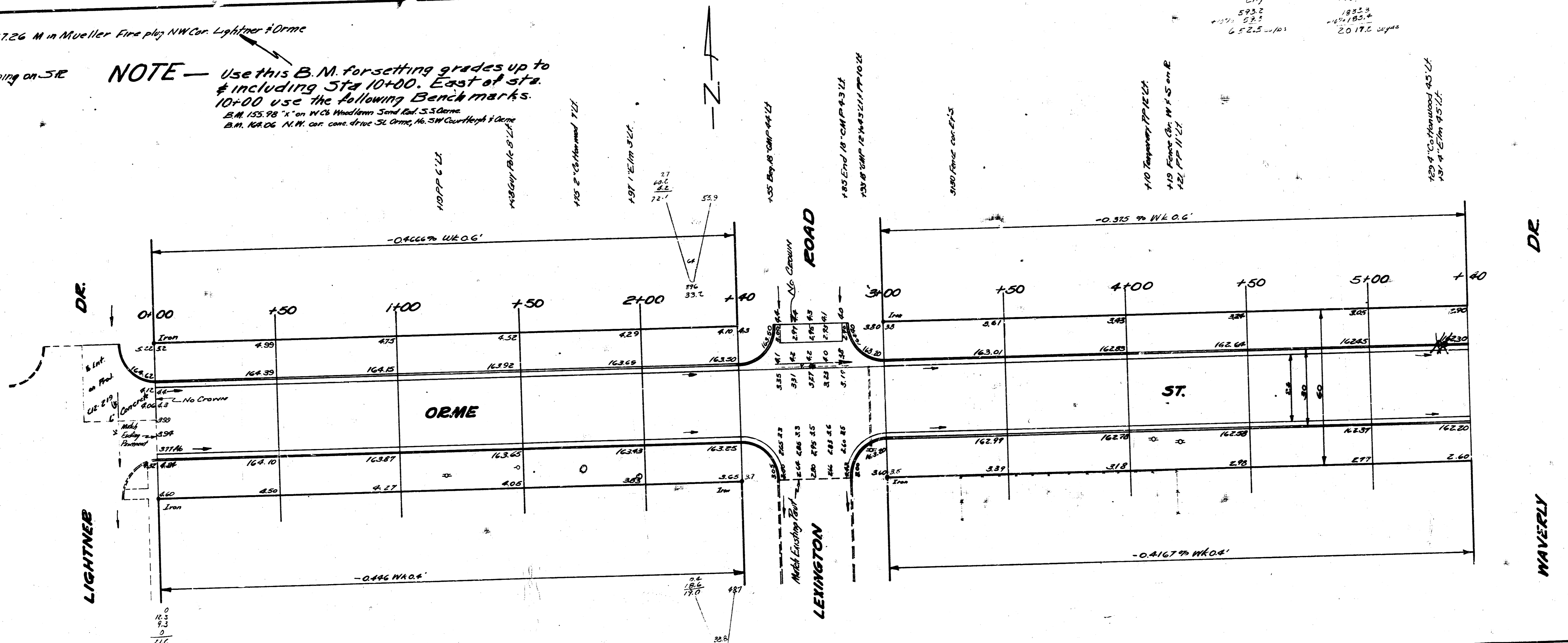
Stationing on SE

NOTE — Use this B.M. for setting grades up to & including Sta 10+00. East of sta. 10+00 use the following Bench marks.

B.M. 13578 7' x 7' in W.C. Woodlawn Sand Lot S.S. Orme
B.M. 16806 N.W. cor. con. drive SE Orme, 16 SW Courtlyght & Orme

City 523.2
1925
652.5-101
2017.5
1925
1019.5
2017.5

Survey Stationed by
Plan 20
Checked J.D.



ORME
 E.L. LIGHTNER TO E.L. COURTLEIGH
 26-2-30 A.C.
 CITY OF WICHITA
 B.E. SMITH CITY ENGINEER
 Oct. 1953 Proj. No. C18-61

