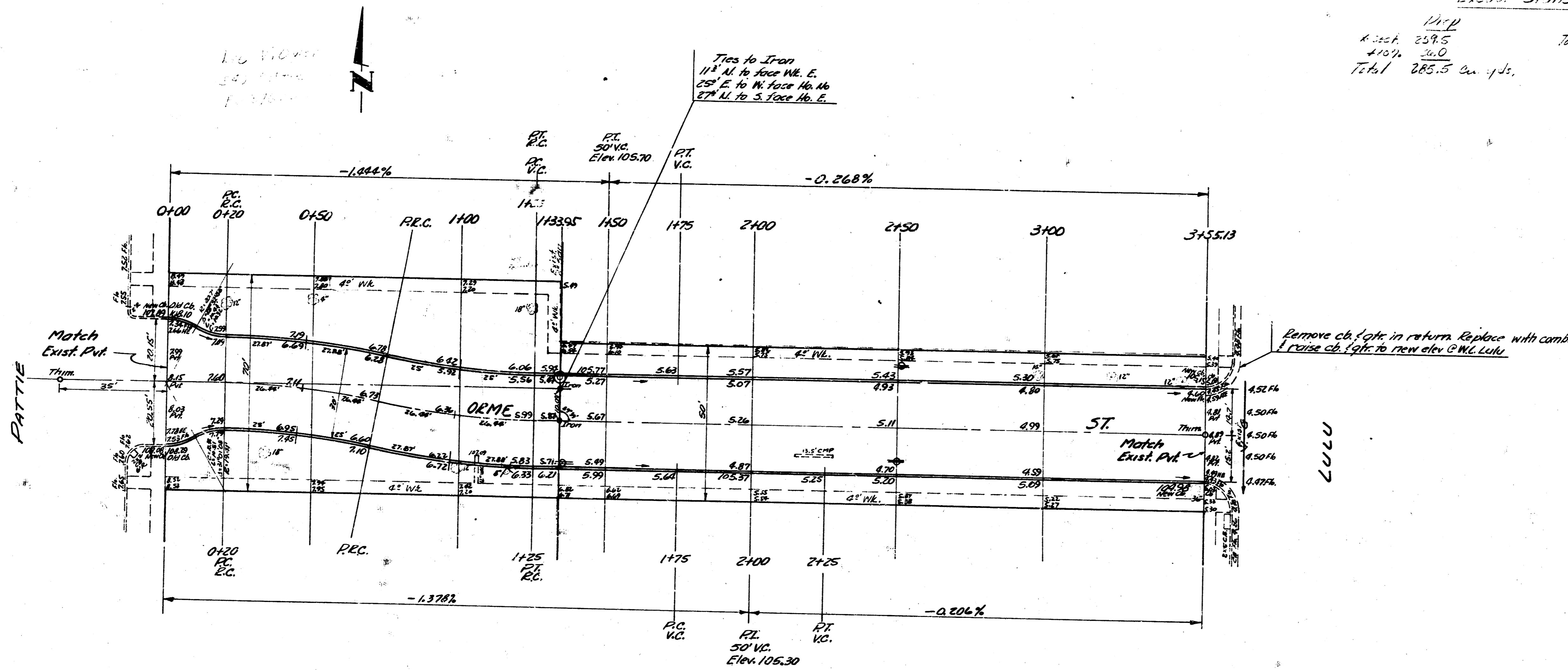


B.M. 108.15 Iron in Thimble & Pattie & E. Water
D.I.N.C.

Survey Young
Plan D.E.C.
Ex. D.E.C.
Checked J.J.

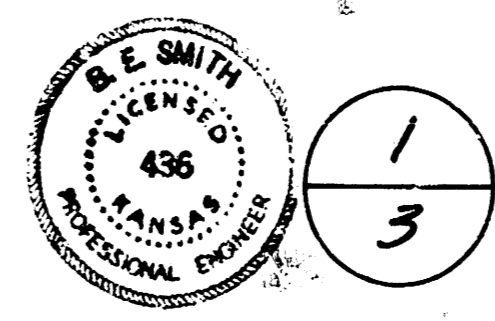


Excess Grand Total
1142
K. 259.5
1107
Total 20 Cuyds.
Total 285.5 cu yds.

NOTICE TO CONTRACTOR -
Entrance pipes to be disposed of in accordance
with instructions of City Dirt Checker.

CURVE DATA FOR REVERSE CURVE Δ = 10°58'40"

STATION	PC	PT	PI	PT	PC
0+20	0+20	0+20	0+20	0+20	0+20
1+25	1+25	1+25	1+25	1+25	1+25
2+00	2+00	2+00	2+00	2+00	2+00
2+25	2+25	2+25	2+25	2+25	2+25
3+00	3+00	3+00	3+00	3+00	3+00
3+55.19	3+55.19	3+55.19	3+55.19	3+55.19	3+55.19



ORME
E.L. PATTIE TO W.L. LULU
30' CONC. & C.B.
CITY OF WICHITA, KANSAS
B.E. SMITH CITY ENGINEER
March 1934 Proj. No. C15-205