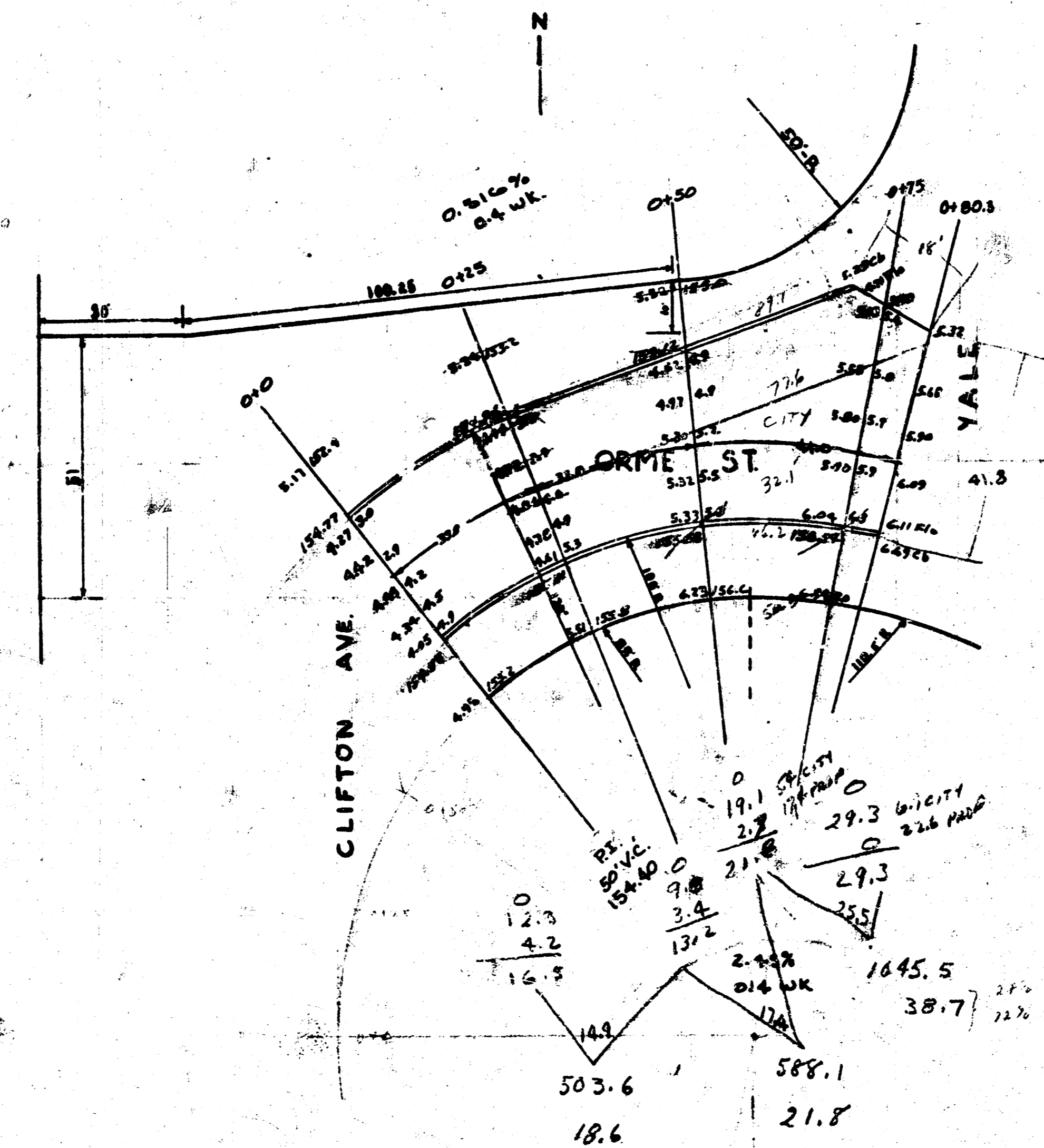


B.M. 131.40 Top Iron @ Clifton N.L. Orme.

Note: Site area on S.P.L.



Prop.	17.6	10.4
	21.8	10.8
	27.9	
	60.3	
110.0	6.8	11.9
	75.1	

ORME ST  
 W.L. CLIFTON TO W.L. YALE  
 30' CONCRETE & INTEGRAL CURB  
 CITY OF WICHITA, KANS.  
 L.K. WHITE CITY ENGINEER  
 JAN 1911