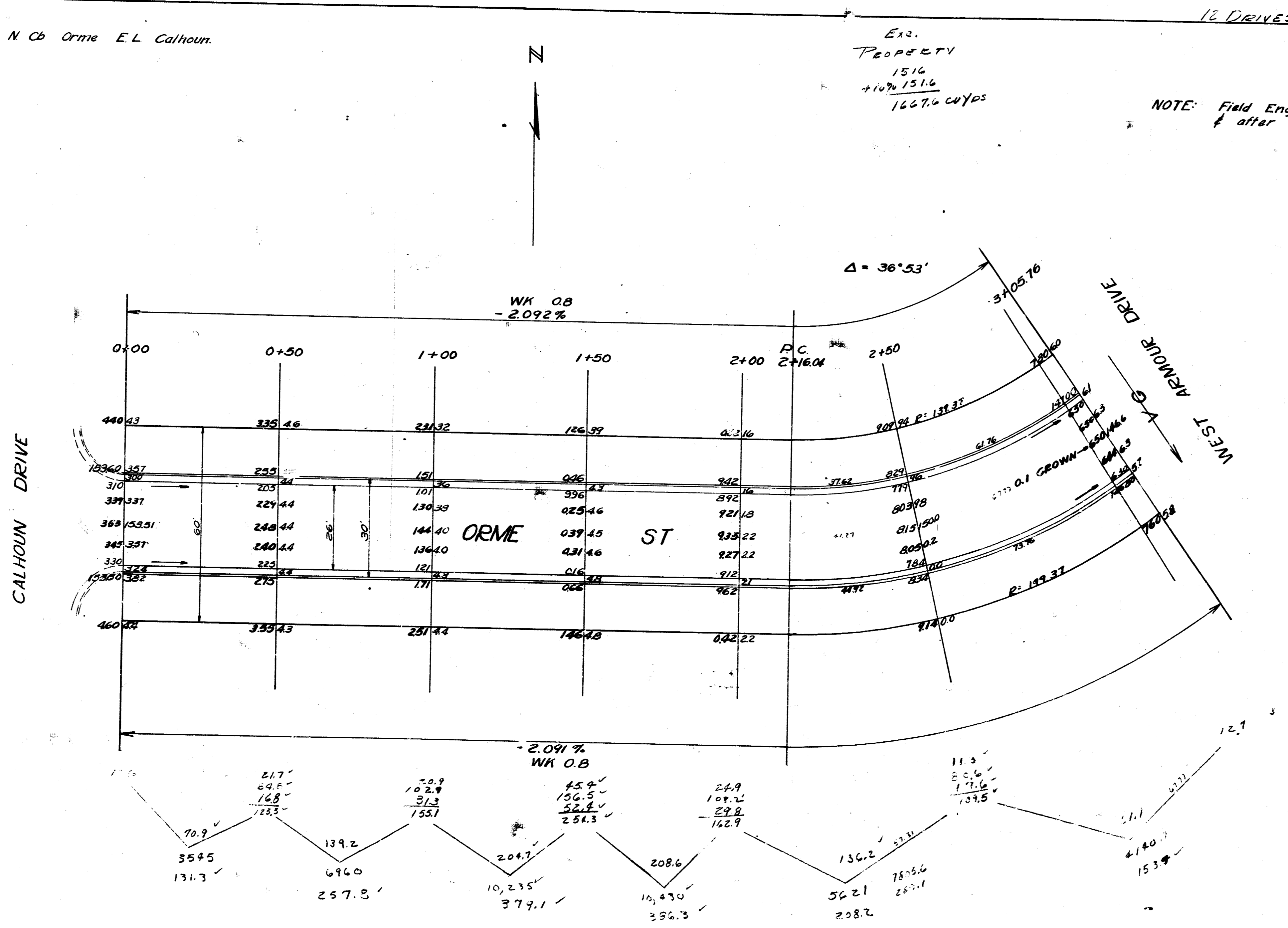


B.M. 15357 'E' in Ritchie N. Co. Orme E.L. Calhoun.

Exc. PROPERTY
1516
+10% 1516
1667.0 cu yds

NOTE: Field Engineer to take Crosssections before & after excavation.

Survey done by
E.L. Calhoun
Checked



ORME ST
 E.L. CALHOUN TO W.L. ARMOUR
 26-2-30 A C
 CITY OF WICHITA, KANS
 B.E. SMITH - CITY ENGINEER
 FEB 1953 PROJ. NO. C12-153

SCALE 1" = 20'

1 2 3 4