

421 GARAGE 25'E
421 GARAGE 85'W

429 GARAGE 25'E
429 GARAGE 85'W

457 GARAGE 25'E
457 GARAGE 85'W

435 GARAGE 25'E
435 GARAGE 85'W

443 GARAGE 25'E
443 GARAGE 85'W

457 GARAGE 85'W
464 GARAGE 25'E

486 GARAGE 85'W
495 GARAGE 25'E

4555 SL 33rd South, Ann Arbor, MI

435.9 SL 34th South, Ann Arbor, MI

495.9 NL 34th South, Ann Arbor, MI

ST. SOUTH

34th

+0.107%
WR. 0.8'

+0.107%
WR. 0.8'

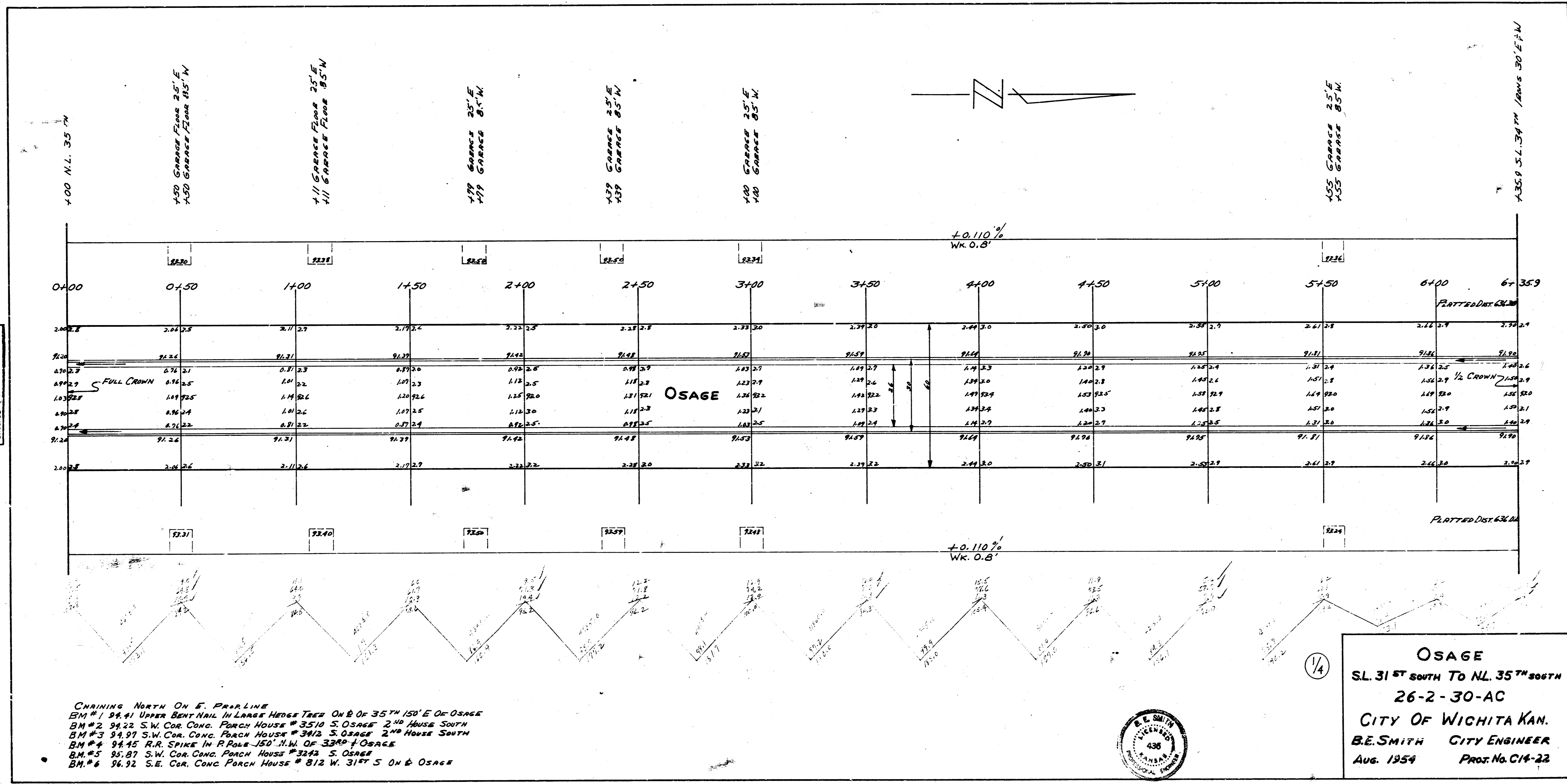
OSAGE

(2/4)

OSAGE

SL 31st South To NL 35th South

CURVE DATA STA 10+50 TO STA 11+50 R=16052073.5 PROBLING Δ=339'				
STATION	CURVE DATA	PC	PT	TOTAL DEF
10+50		51.57	53.34	
11+50	50.26	51.57	53.34	10.48'



CHAINING NORTH ON E. PARALLEL LINE
 BM #1 94.91 UPPER BENT NAIL IN LARGEST HOLE ON E. OF 35TH 150' E. OF OSAGE
 BM #2 94.22 S.W. COR. CONC. PORCH HOUSE # 3510 S. OSAGE 2ND HOUSE SOUTH
 BM #3 94.97 S.W. COR. CONC. PORCH HOUSE # 3412 S. OSAGE 2ND HOUSE SOUTH
 BM #4 94.15 R.R. SPIKE IN R. POLE 150' N.W. OF 33RD + OSAGE
 BM #5 95.87 S.W. COR. CONC. PORCH HOUSE # 3242 S. OSAGE
 BM #6 96.92 S.E. COR. CONC. PORCH HOUSE # 812 W. 31ST S. ON E. OSAGE

