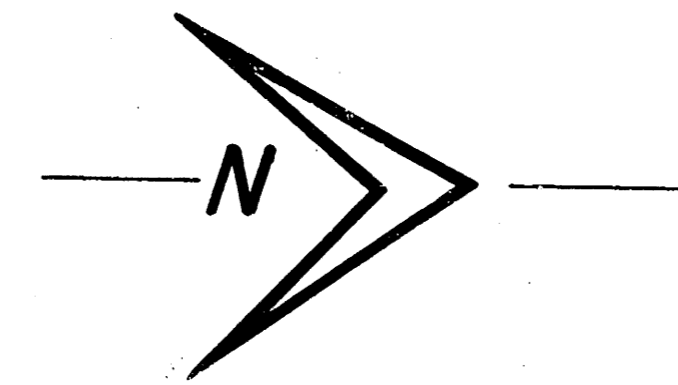


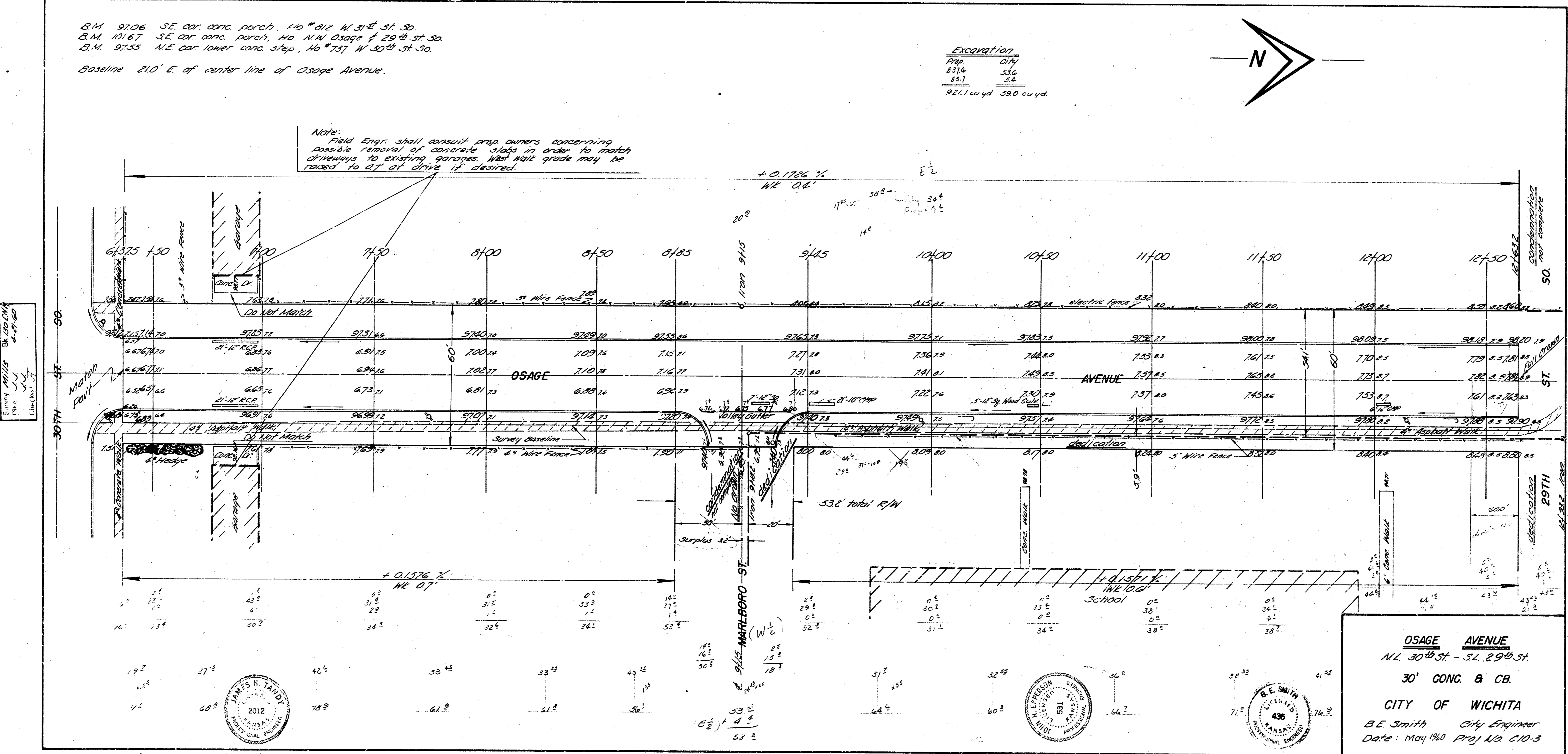
B.M. 9706 SE cor. conc. porch, Ho #812 W. 31st St. So.
 B.M. 10167 SE cor. conc. porch, Ho. N.W. Osage & 29th St. So.
 B.M. 9755 N.E. cor. lower conc. step, Ho #737 W. 30th St. So.
 Baseline 210' E. of center line of Osage Avenue.

Excavation

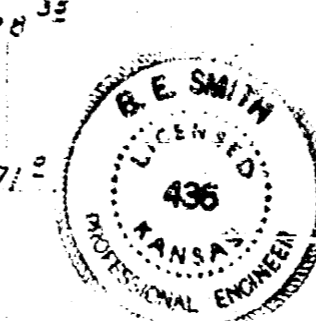
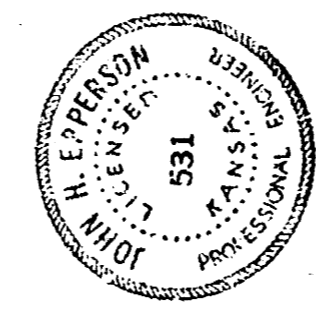
Prop	City
8310	536
857	54
921.1 cuyd. 58.0 cuyd.	



Note: Field Engr. shall consult prop owners concerning possible removal of concrete slabs in order to match driveways to existing garages. Wet walk grade may be raised to 0.7' at drive, if desired.



Survey Notes
 Bl. 200 CH
 4-27-60
 C. H. Smith



OSAGE AVENUE
 N.L. 30th St. - S.L. 29th St.
 30' CONG. & CB.
 CITY OF WICHITA
 B.E. Smith City Engineer
 Date: May 1960 Proj. No. C10-3