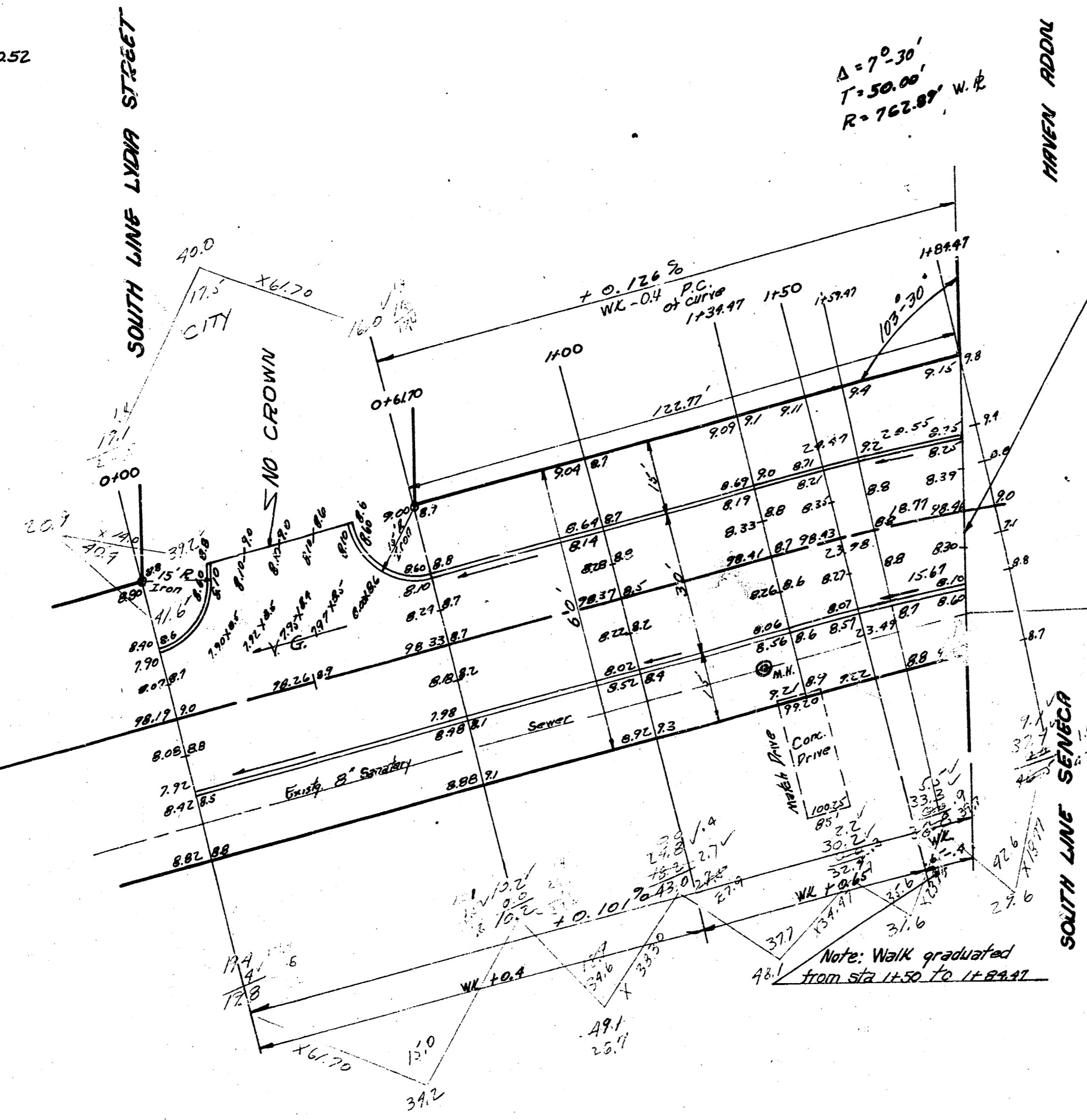
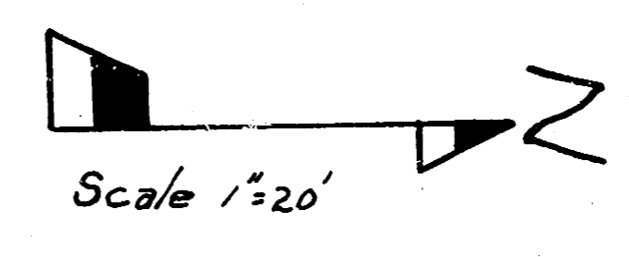


B.M. S.W. COR. CONC. PORCH NOS #2/32 SOUTH OSRGE 101.19
 B.M. R.R. SPIKE NE H.L.P. W.S. SENECA 75' N OF JEWELL EAST 100.52
 BASELINE - WEST LINE LYDIA



Note to Field Engineer: Stop pavement at property line.

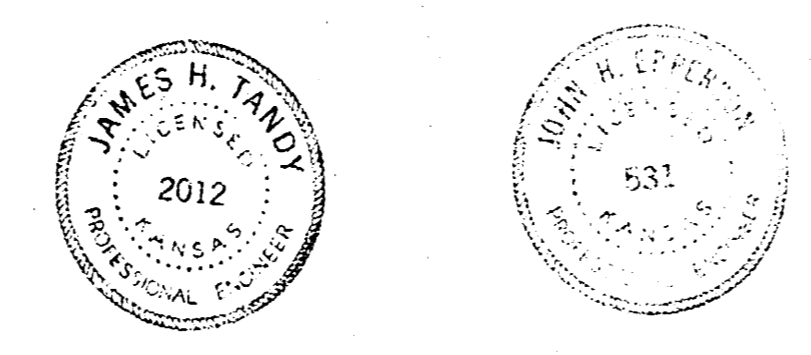


CURVE DATA BASED ON W.P.L. RAD 762.87' Δ = 7°30'

Stationing	Arc Length	Chord Length at 6" E.Sch	Chord Length at 12" W.Sch	Deflection at 6" E.Sch	Deflection at 12" W.Sch
1+34.47	-	-	-	0° 00' 00"	0° 00' 00"
1+59.47	25.0'	23.23	24.78	0° 54' 15"	0° 56' 15"
1+84.47	25.0'	23.23	24.78	0° 56' 15"	1° 52' 30"

EXCAVATION

CITY	60.9	PROP	192.6
+ 10%	6.1	+ 10%	19.3
TOTAL	67.0	TOTAL	211.9



OSRGE RVE
 S.L. LYDIA - S.W. SENECA HARVEN ADDN.
 30' CONC & CB.
 CITY OF WICHITA, KANSAS
 B. E. SMITH CITY ENGINEER
 DATE: AUG 1958 PROJ NO C/18-55