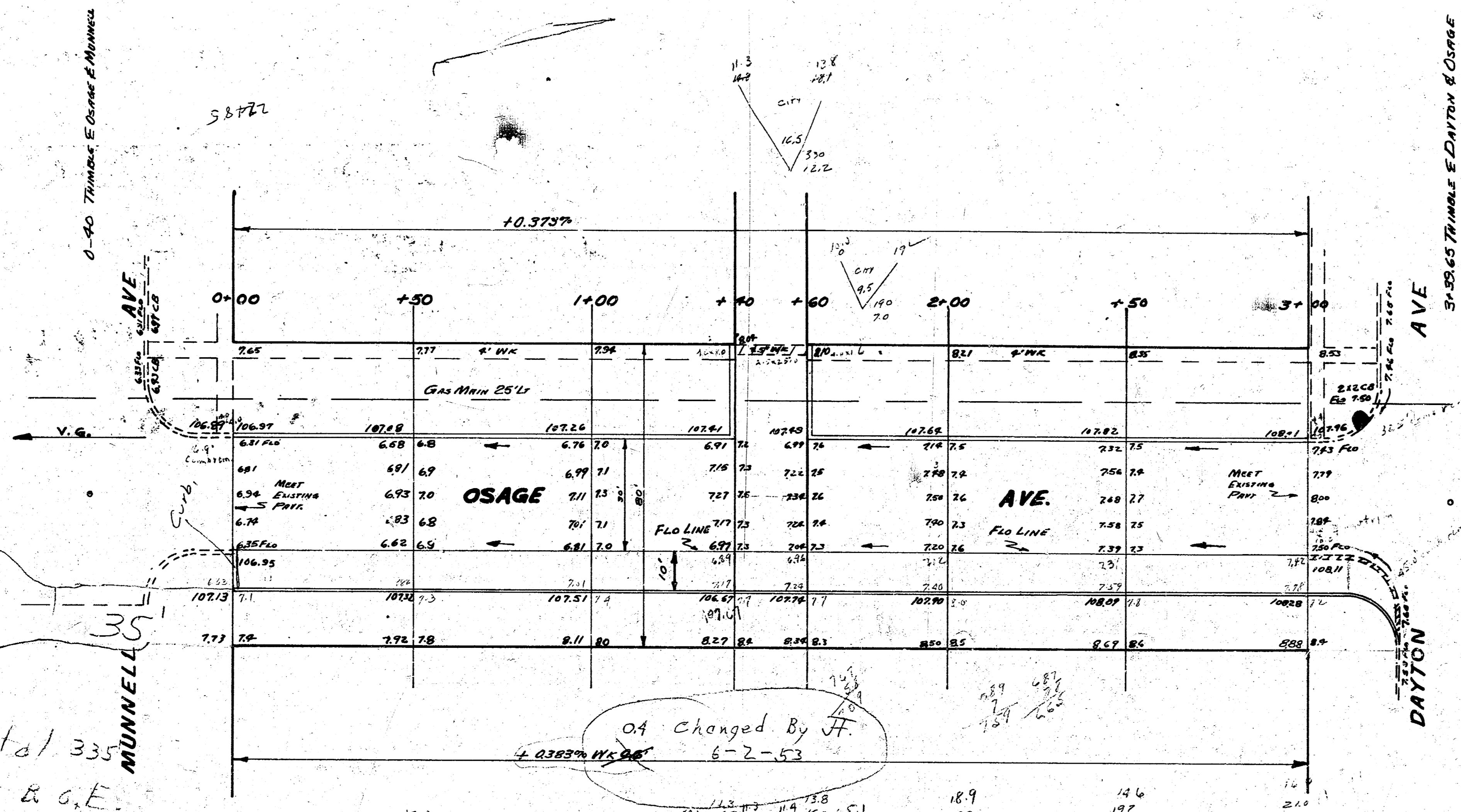


BM. 10895 Spruce Bench NW Side HL Pole NW Cor. MUNNELL & OSAGE

STATIONING ON E

X-50000 55 6-5-52 Plan, Grading & Exc. DS. 6-12-52



CITY	72.7
12	42.5
20	48.5
	49.3
19.2	20.7
1.9	20.1
21.7	21.1
Grass Gr.	32.2
	20.5
	27.1
	277.6

To Make Total 335 Widening for & C.E. #14

0.9 changed by J.F. 6-2-53



SCALE 1"=20'

**OSAGE**  
 SL DAYTON TO NL MUNNELL  
 30' CONC & C.B.  
 CITY OF WICHITA  
 LK WHITE CITY ENGINEER  
 JAN 1952 Proj. CII-246