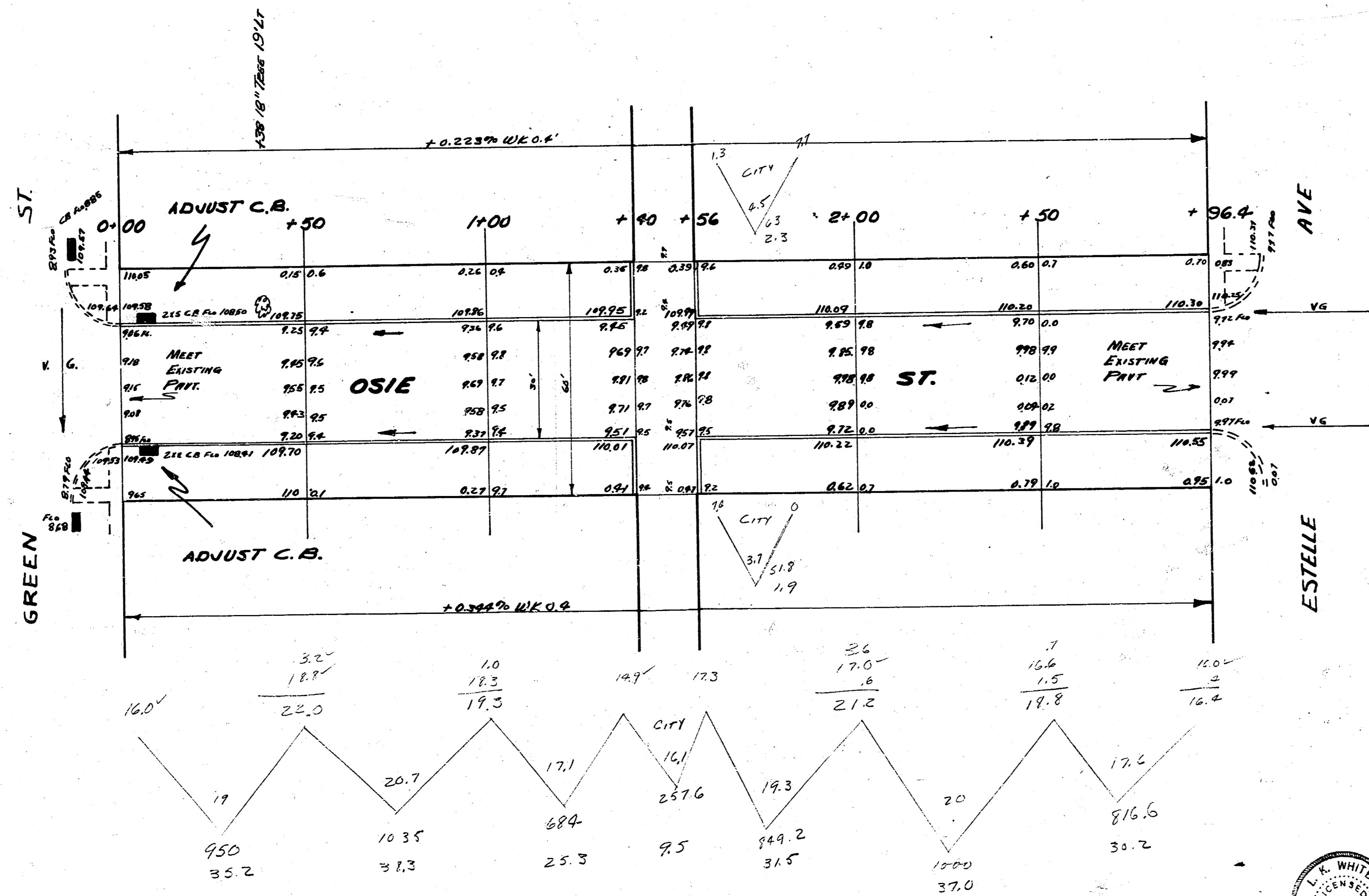


S-8

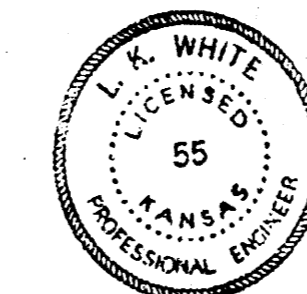
B.M. 100.76 G in Gas Be S End E. Cor. Estelle & N. Funston  
 B.M. 112.18 S.E. Cor. Conc. Pvd. 1675 S Estelle  
 B.M. 111.45 "M" in Mueller Top Hyd. S.W. Cor. Green & Osie

SPANNING ON E

CITY	PROPERTY
2.3	22.2
1.9	27.3
9.5	25.5
13.7	37.0
<u>10.70</u>	<u>30.2</u>
15.1	147.5
20.70	11.10
51.2	217.3
	CITY'S
	Exc.



K-5470-55 5-12-52 Plan, Grading, Etc. D.S. 6-12-52

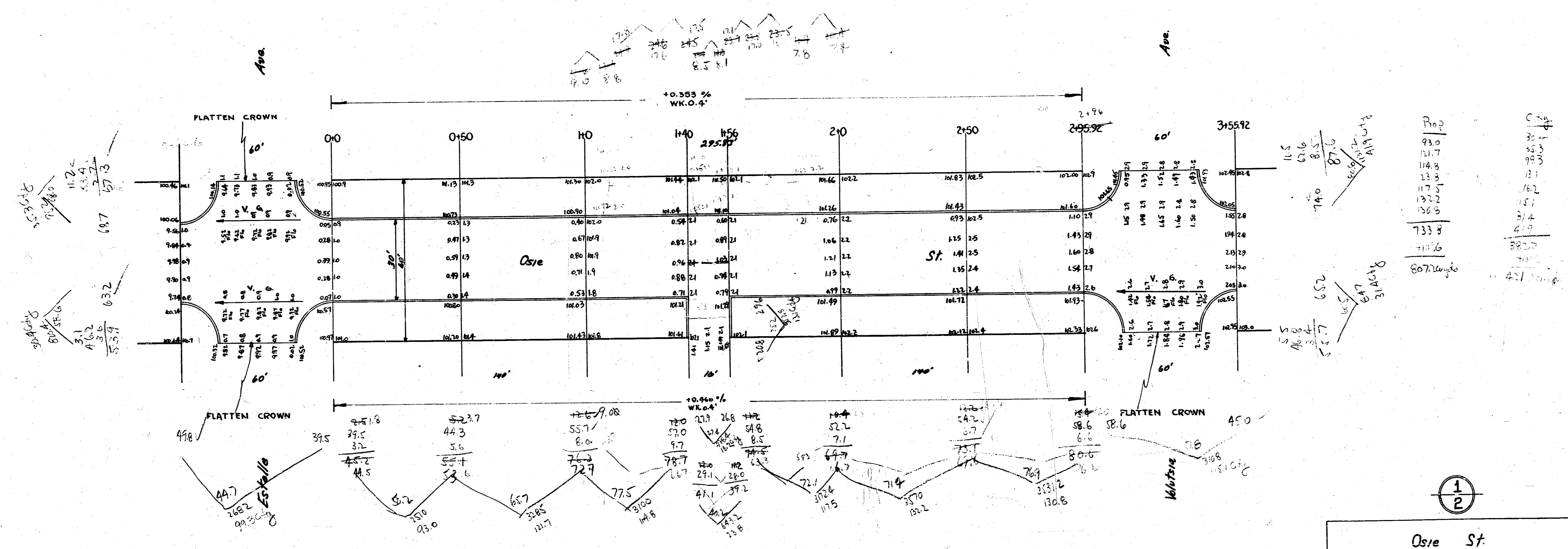


SCALE 1"=20'

**OSIE**  
 EL GREEN TO WL ESTELLE  
 30' CONC. & C.B.  
 CITY OF WICHITA  
 LK WHITE CITY ENGINEER  
 JAN 1952 PROJ. C11-244

B.M. 102.41 S.E. COR. LOWER CONC. STEP NO. #1657 N.W. COR. GROVE & OSIE

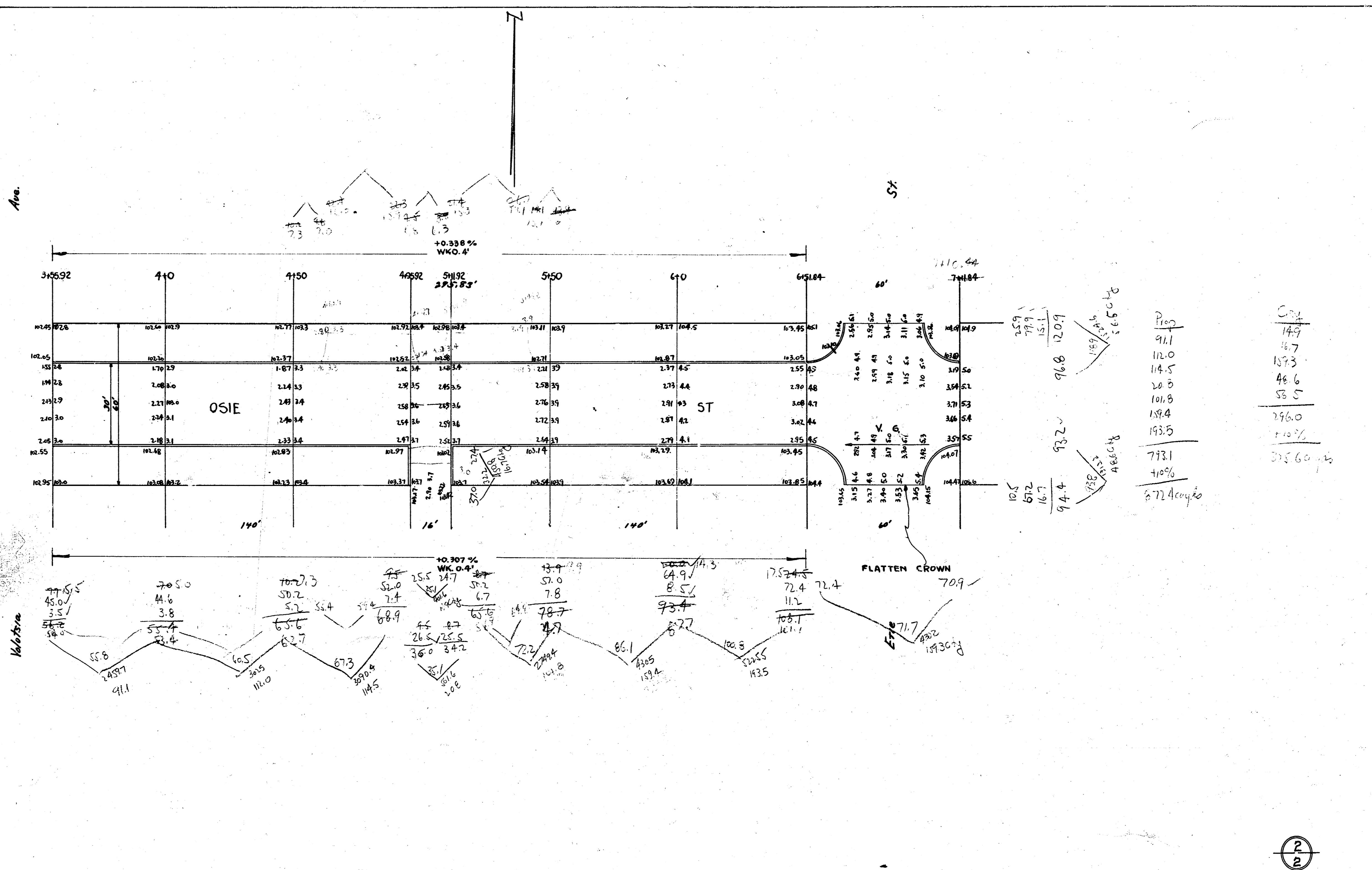
Grand Totals  
 Prop 807.2  
 872.4  
 1679.6 cu yds.  
 City 421.0  
 325.6  
 746.6 cu yds.



Prop	City
93.0	30.1
121.7	45.3
114.3	99.3
123.3	181
117.5	162
132.2	147
136.6	31.4
733.9	419
715.6	382.0
807.2 cu yds	421.0 cu yds

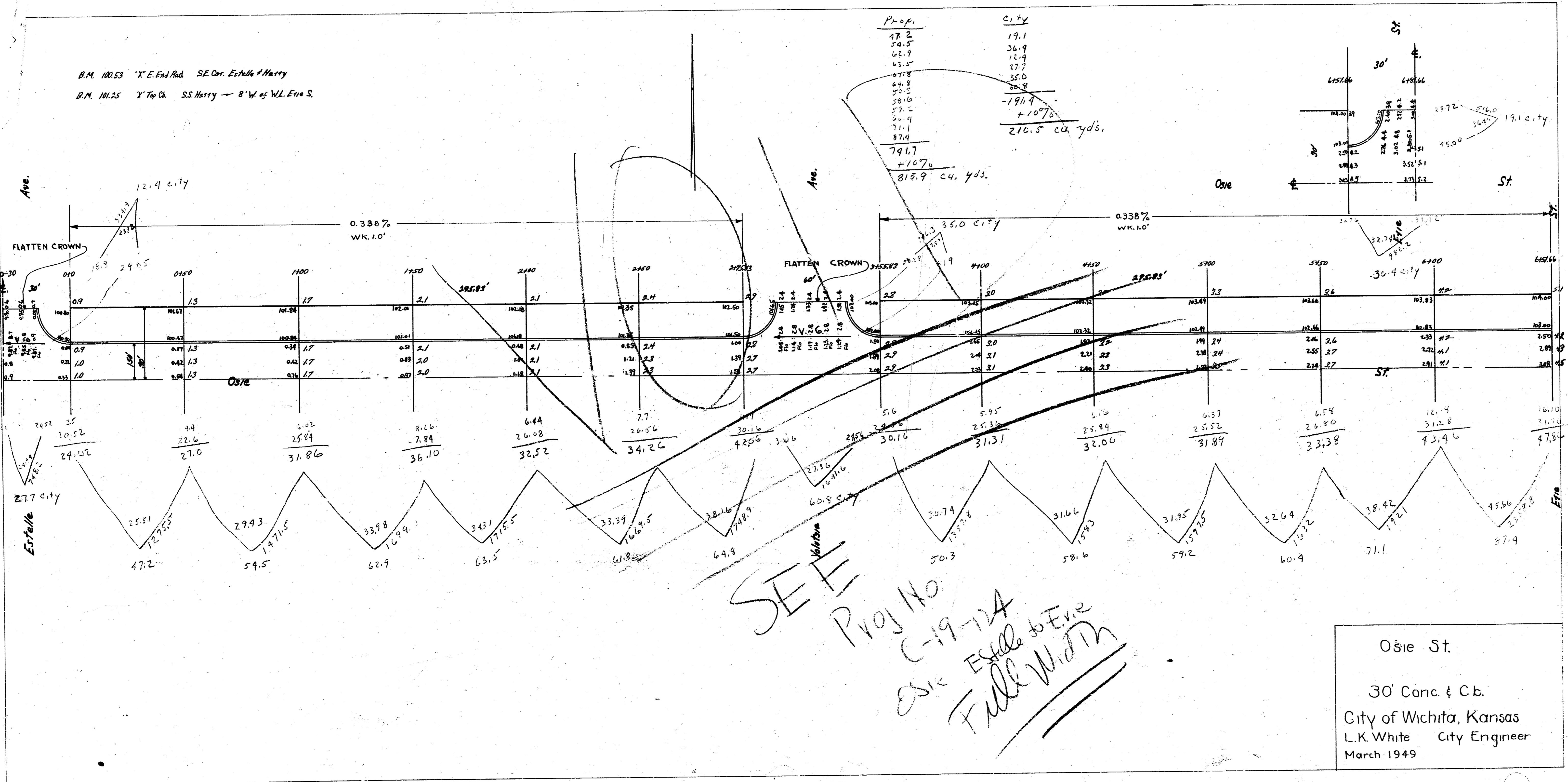
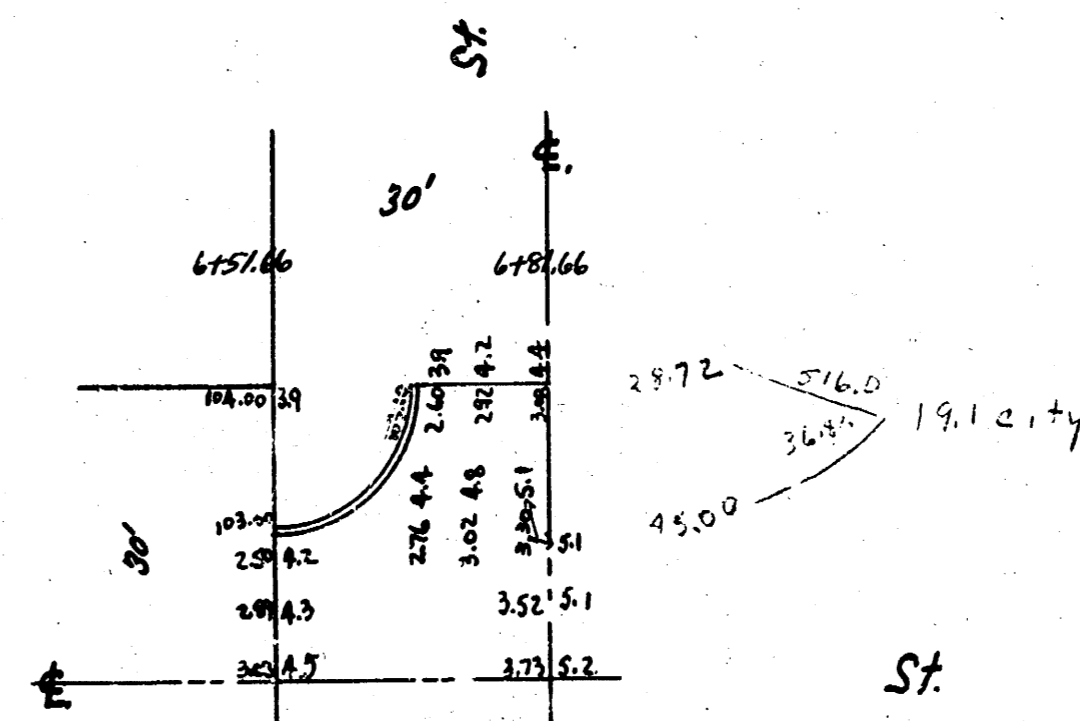
①  
②

Osie St.  
 W. Estelle — E. L. Erre  
 30' Conc. & Cb.  
 City of Wichita, Kansas  
 L.H. White City Engineer  
 July 1949 Project 019-124



B.M. 100.53 'X' E. End Pk. SE. Cor. Estelle & Harry  
 B.M. 101.25 'X' Top Ch. SS. Harry — 8' W. of W.L. Erie S.

Prop.	City
47.2	19.1
48.5	36.9
42.9	12.4
43.5	27.7
47.8	35.0
44.8	20.8
50.5	19.9
58.0	+107.0
57.2	
50.9	
71.1	
87.4	
79.17	
+107.0	
818.9 cu. yds.	



SEE  
 Proj No  
 C-19-124  
 Erie Estelle to Erie  
 Full Width

Osie St.  
 30' Conc. & C.C.  
 City of Wichita, Kansas  
 L.K. White City Engineer  
 March 1949