

MEG. Bk 7

Bth 116.55 80° Spike E.S. PP 30' South of S.I. Kingswell
* in Culvert on Hillside 600' South of Harry

Prop	5.5
City	3.3
Fill	2.5
Total Cu Yds Excavations	58.0

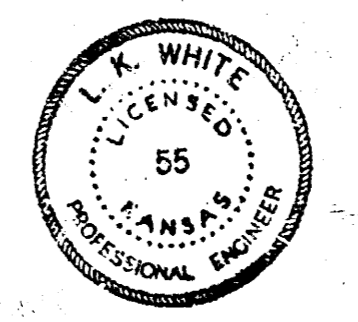
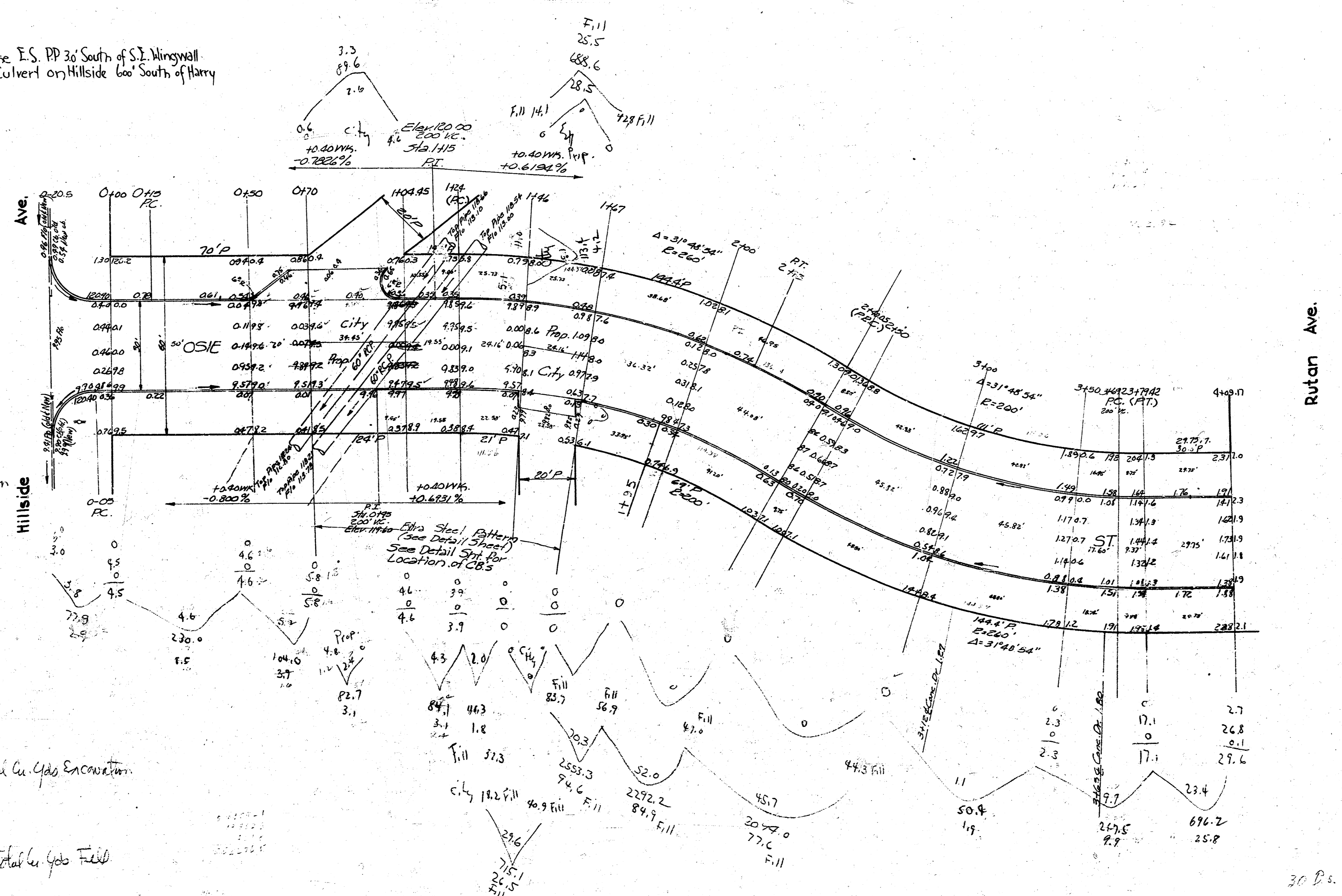
City	2.9
Fill	3.3
Total Cu Yds Excavation	10.7

Grand Totals

Prop	58.0
City	402.3
Fill	460.3
Total Cu Yds Excavation	504.3

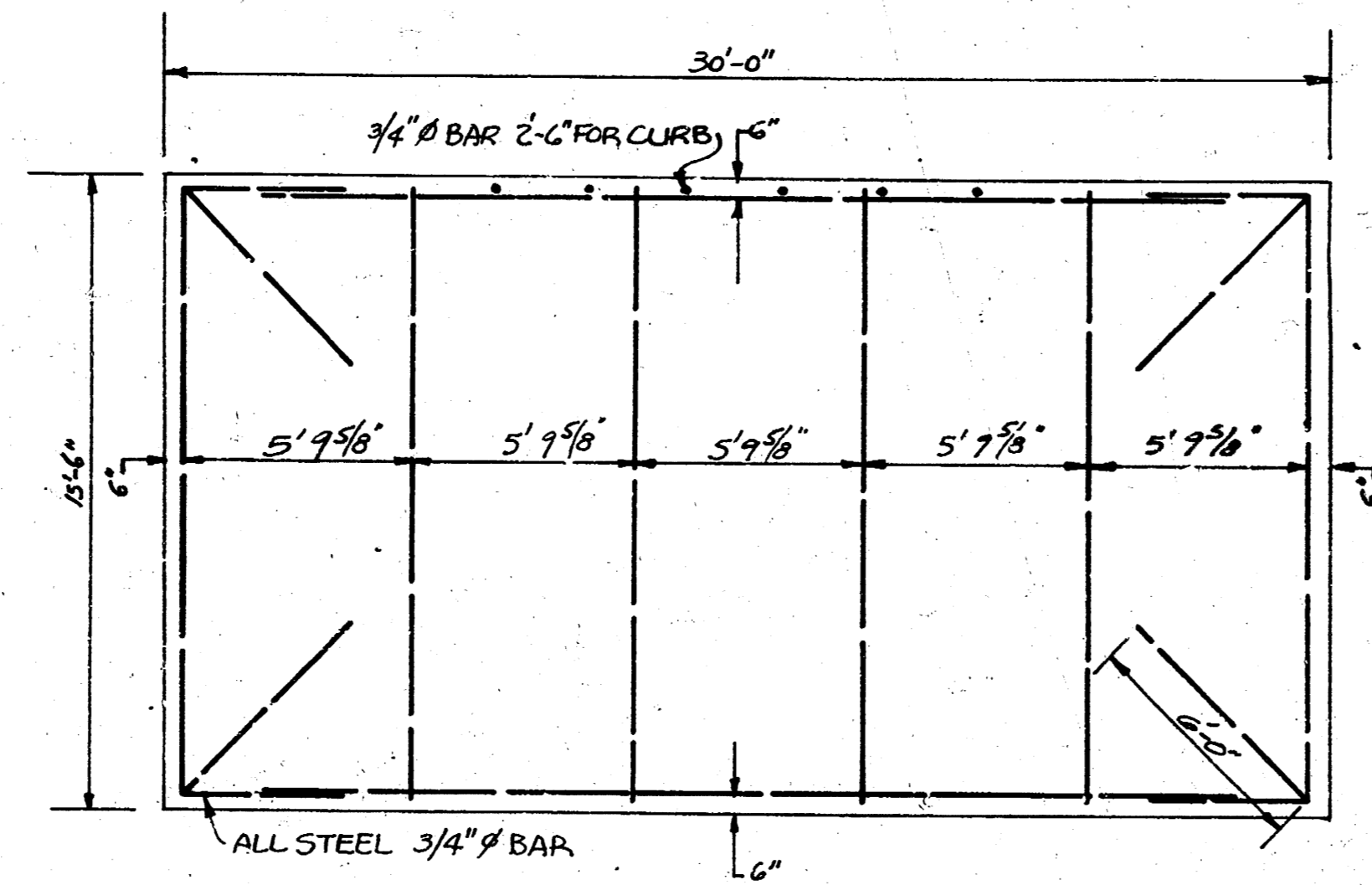
City	0.9
Fill	69.5
Total Cu Yds Excavation	70.4

Fill	26.5
Total Cu Yds Filled	110.2



OSIE ST.
E. L. Hillside to E. L. Pankratz Adn.
30' conc. & curb
CITY OF WICHITA, KANSAS
L.K. WHITE CITY ENGINEER
Feb. 1951, Project No. C10-148

Note: Stationing is on S.P.L. to Sta. 1424. On 90° Offset from S.P.L. to 3779.42 then on N.P.L.
Excavation Figured on @ Distances.



REINFORCED STEEL PATTERN
 BETWEEN STA. 0110 & STA. 1167
 SCALE - 1/4" = 1'-0"

