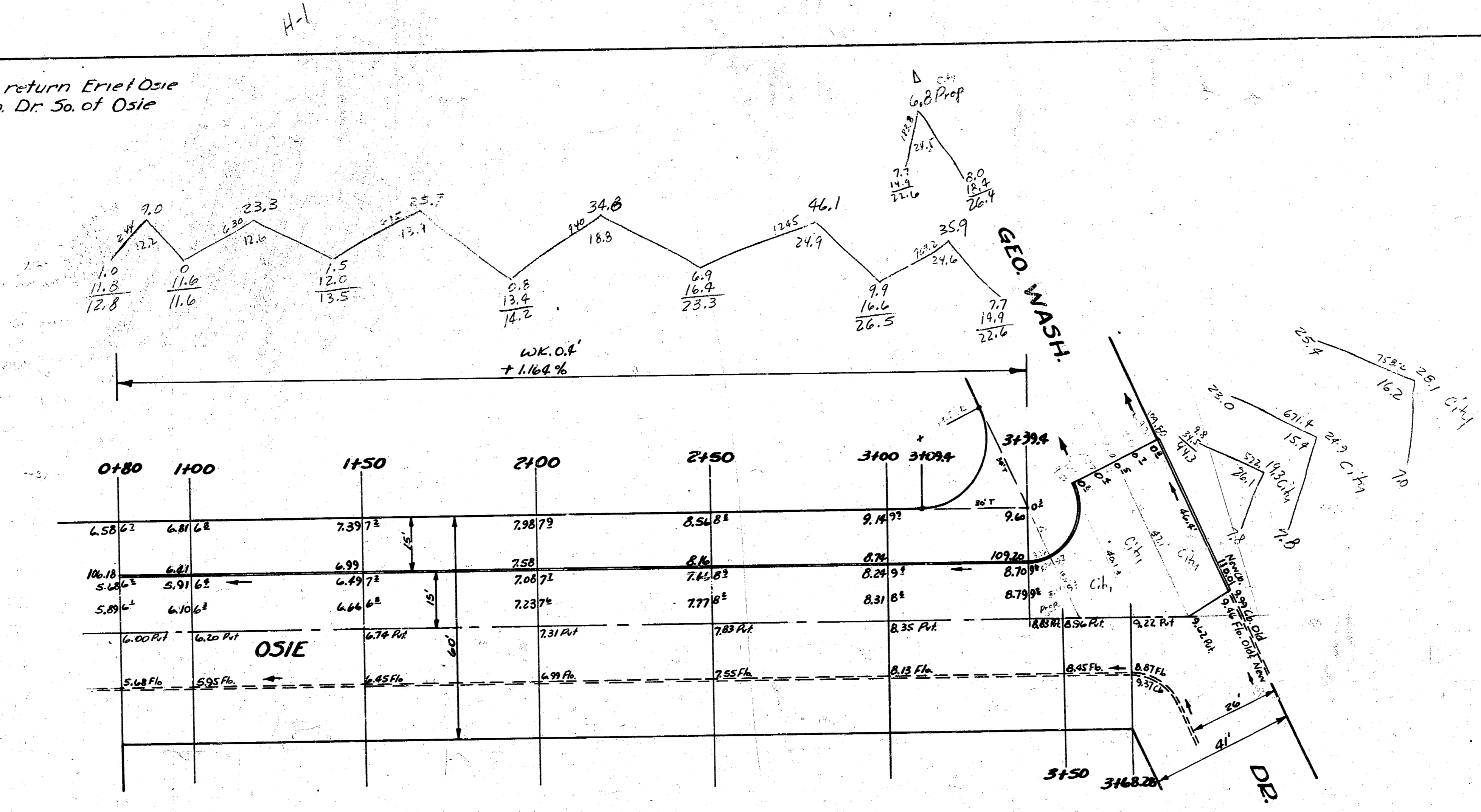
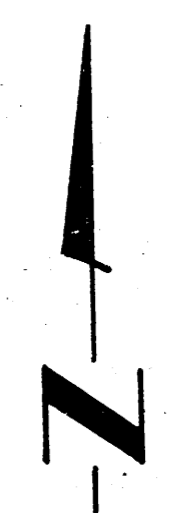


B.M. 103.75 "G" in Globe on F. Cb. N. end E. return Erie St. Osie
 B.M. 112.06 "X" on W. edge of Geo. Wash. Dr. So. of Osie

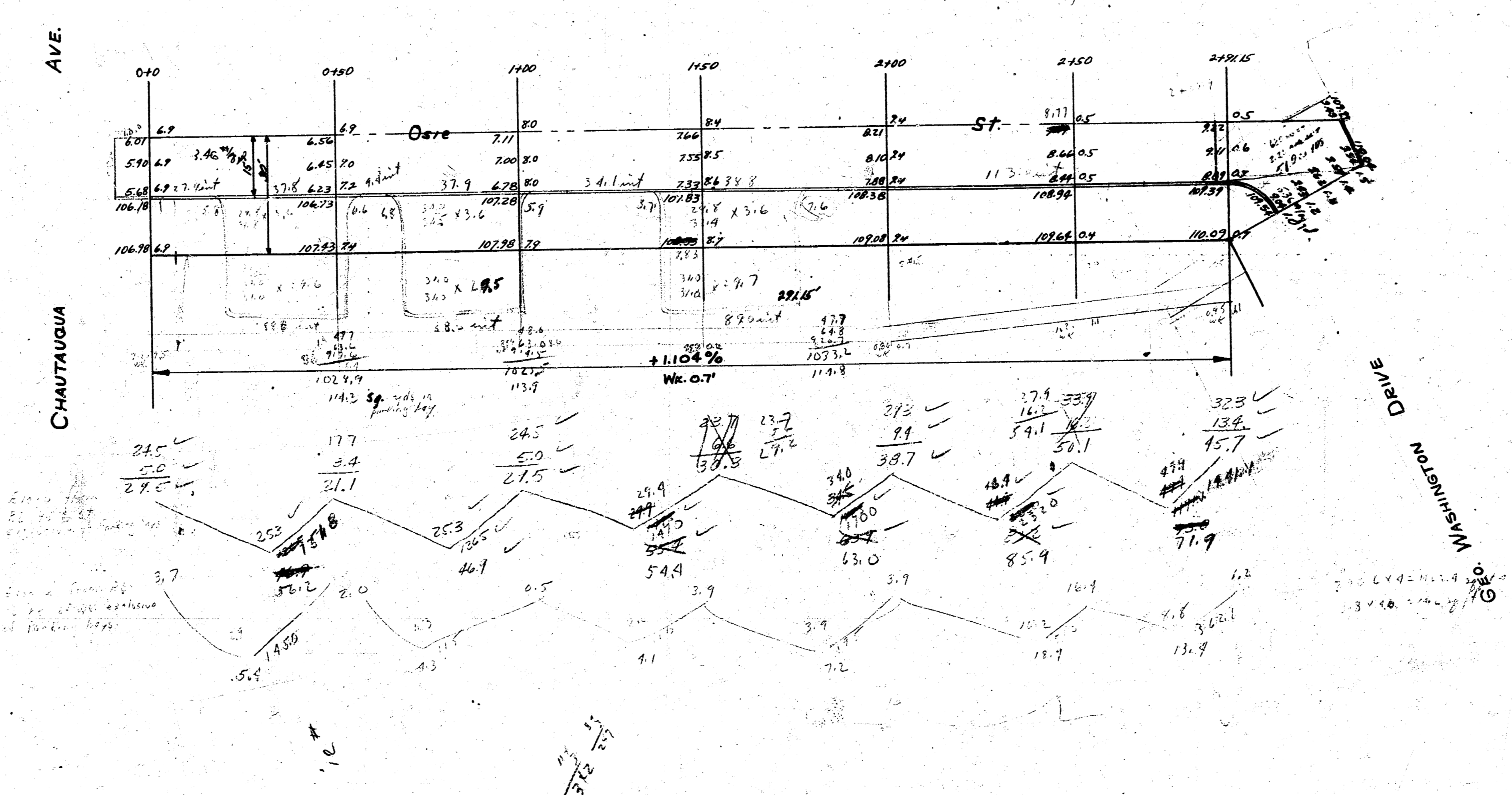


CHAUTAQUA

N 1/2 OSIE
CHAUTAQUA to E.L. GEO. WASH. DR.
15' CONC. I. CB.
CITY OF WICHITA, KANS.
L.K. WHITE CITY ENGINEER
AUG. 1951 PROJ. NO. CII-213

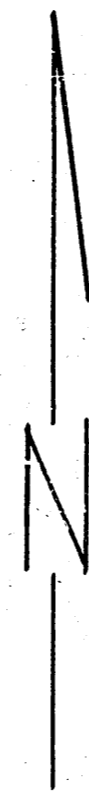
B.M. 106.81 Iron E.L. Chauteau - St. One

HEIGHT	CITY
56.1	51.0
55.7	+10%
63.7	56.1 cu. yds.
86.6	
73.0	
3.5.5	
+10%	
4251	

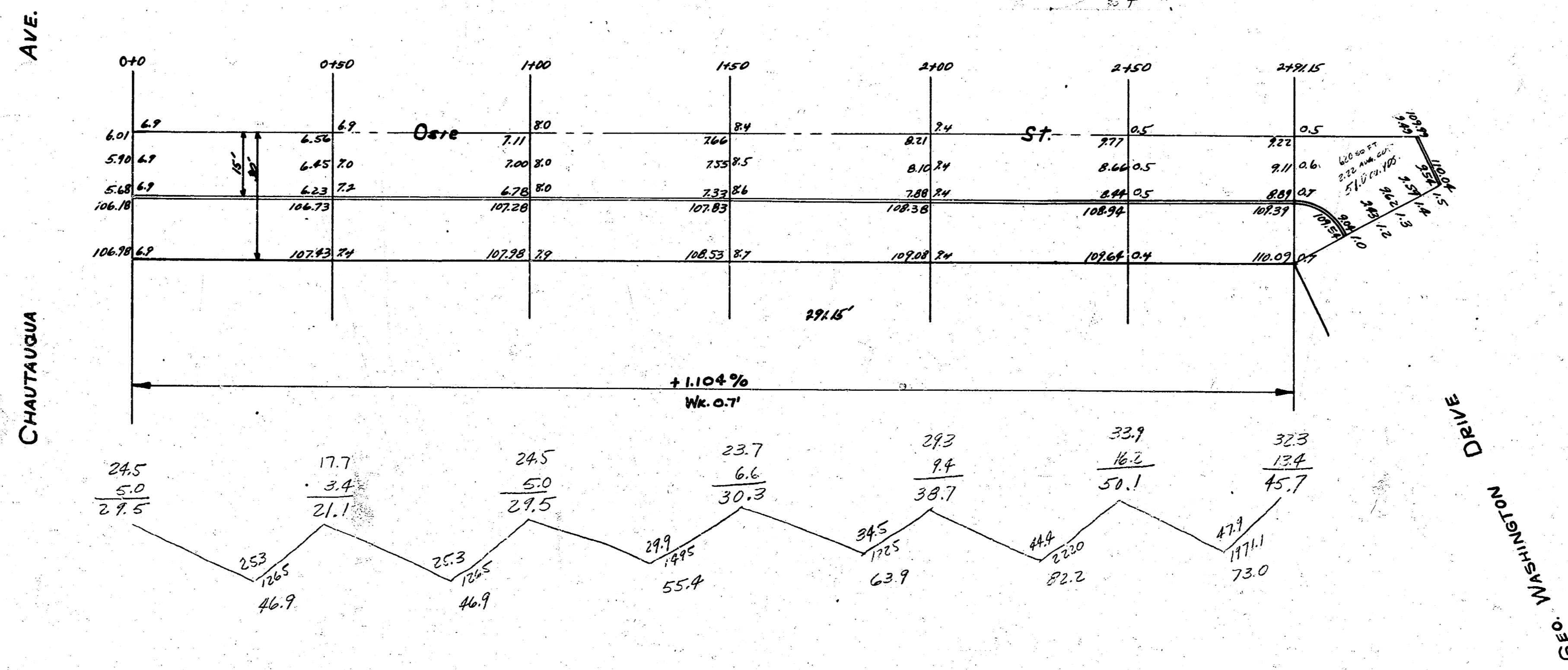


S.E. OSIE ST.
 EL. CHAUTAUQUA AVE. to E.L. GEO. WASH. DR.
 15' CONC. & CB.
 CITY of WICHITA, KANS.
 LKWHITE CITY ENGINEER
 APRIL 1949

B.M. 106.81 Iron El. Chautauqua - S.L. Curve



PROPERTY	CT-1
40.7	51.0
48.7	40.8
55.4	56.1 cu. yds.
63.7	
80.2	
73.0	
<u>368.3</u>	
+10%	
405.1 cu yds.	



S⁺ OSIE ST.
 EL CHAUTAUGUA AVE. TO EL. GEO. WASH. DR.
 15' CONC. & CB.
 CITY OF WICHITA, KANS.
 L.K. WHITE CITY ENGINEER
 APRIL 1949