

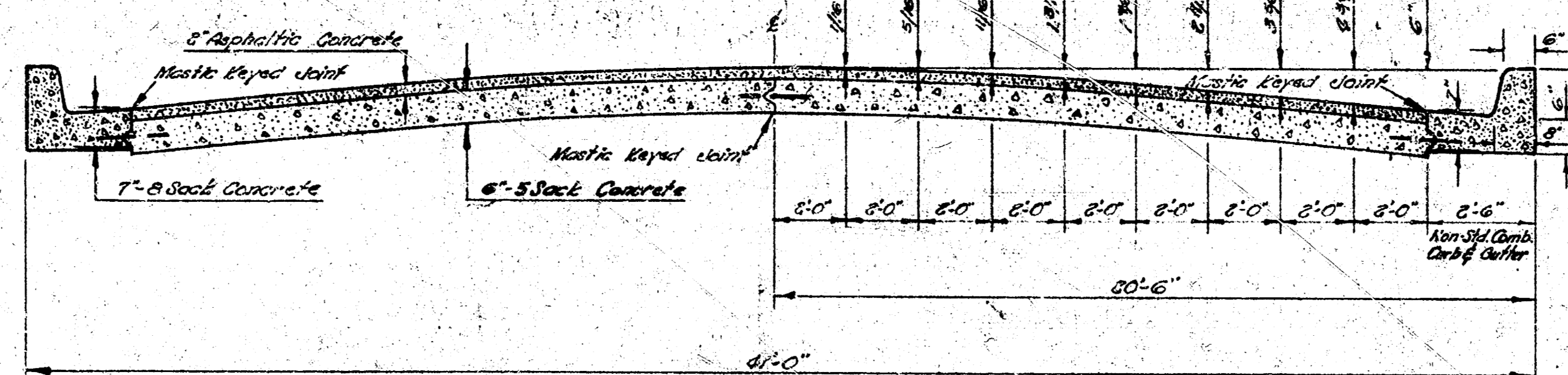
# OSIE STREET

FROM W.L. BLOCK 2 LEVITT INDUSTRIAL PARK ADDITION TO W.L. LONGFELLOW LANE

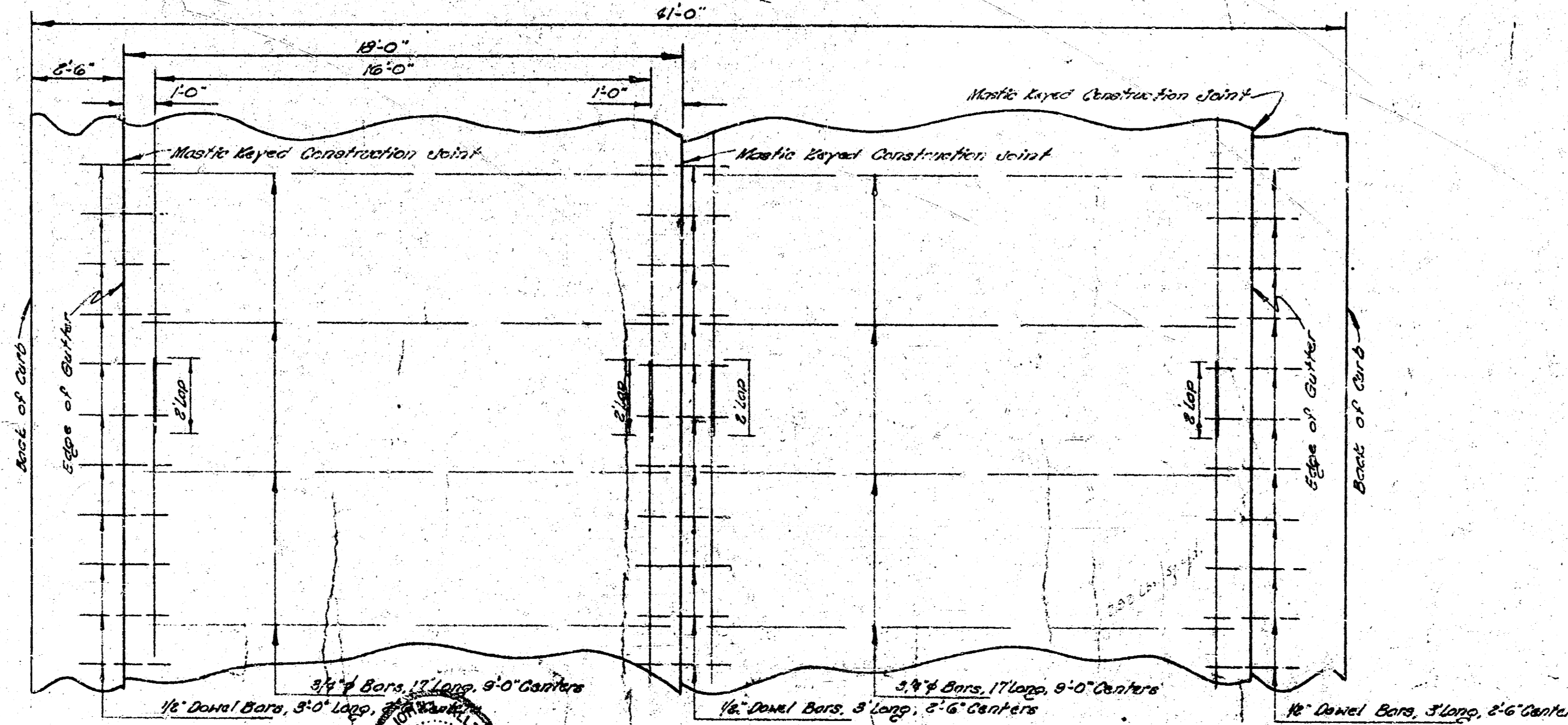
B.E. SMITH CITY ENGINEER CITY OF WICHITA KANSAS

PROJECT NO. C 16 - 57

PROJECT NO. C 16 - 69

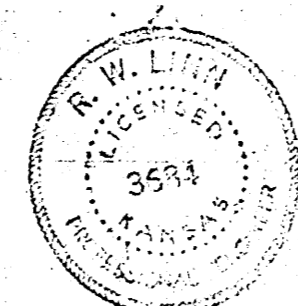
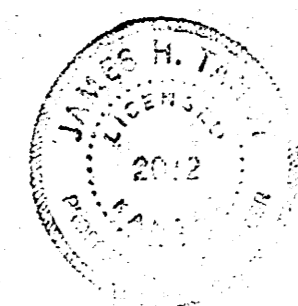


TYPICAL SECTION  
TO SCALE



STEEL PATTERN  
USE 3/4" Ø BARS EXCEPT WHERE NOTED  
NOT TO SCALE

Survey  
Plan  
Checked  
12-1-69

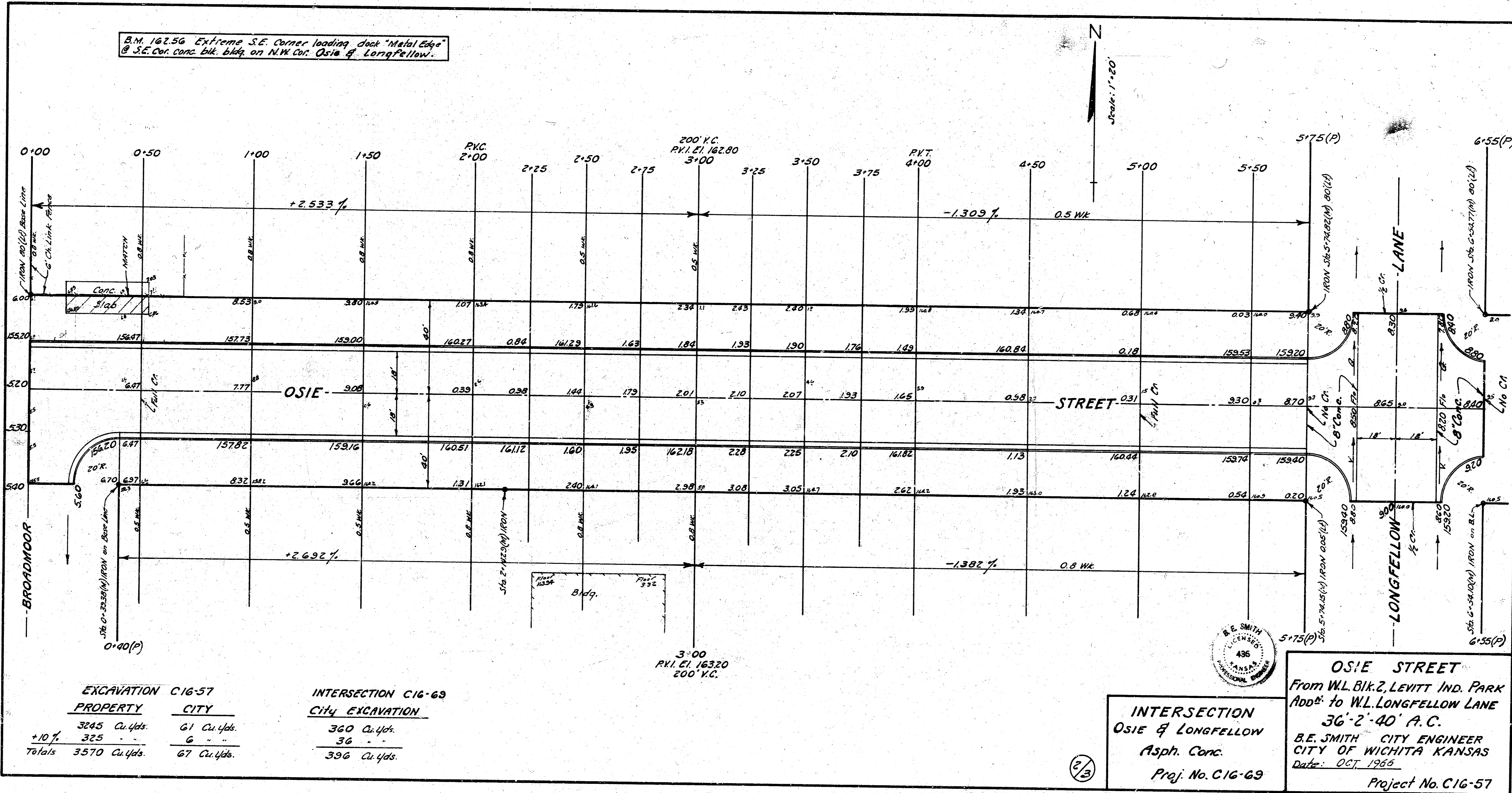


1/3

16-Eng  
1-10-69

B.M. 162.56 Extreme S.E. Corner loading dock "Metal Edge"  
 @ S.E. Cor. conc. blk. bldg. on N.W. cor. Osie & Longfellow.

Survey  
 with  
 L.A.  
 Exc.  
 Checked  
 8/17/63



EXCAVATION C16-57	
PROPERTY	CITY
3245 Cu.Yds.	61 Cu.Yds.
+10% 325	6
<b>Totals 3570 Cu.Yds.</b>	<b>67 Cu.Yds.</b>

INTERSECTION C16-63	
CITY EXCAVATION	
360 Cu.Yds.	
36	
<b>396 Cu.Yds.</b>	

**INTERSECTION**  
**OSIE & LONGFELLOW**  
 Asph. Conc.  
 Proj. No. C16-69



**OSIE STREET**  
 From W.L. BIK. 2, LEVITT IND. PARK  
 Add<sup>d</sup> to W.L. LONGFELLOW LANE  
 36'-2'-40' A.C.  
 B.E. SMITH CITY ENGINEER  
 CITY OF WICHITA KANSAS  
 Date: OCT. 1966  
 Project No. C16-57

2/3