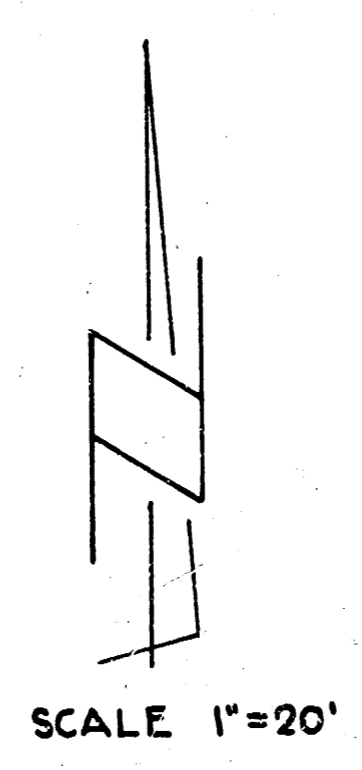
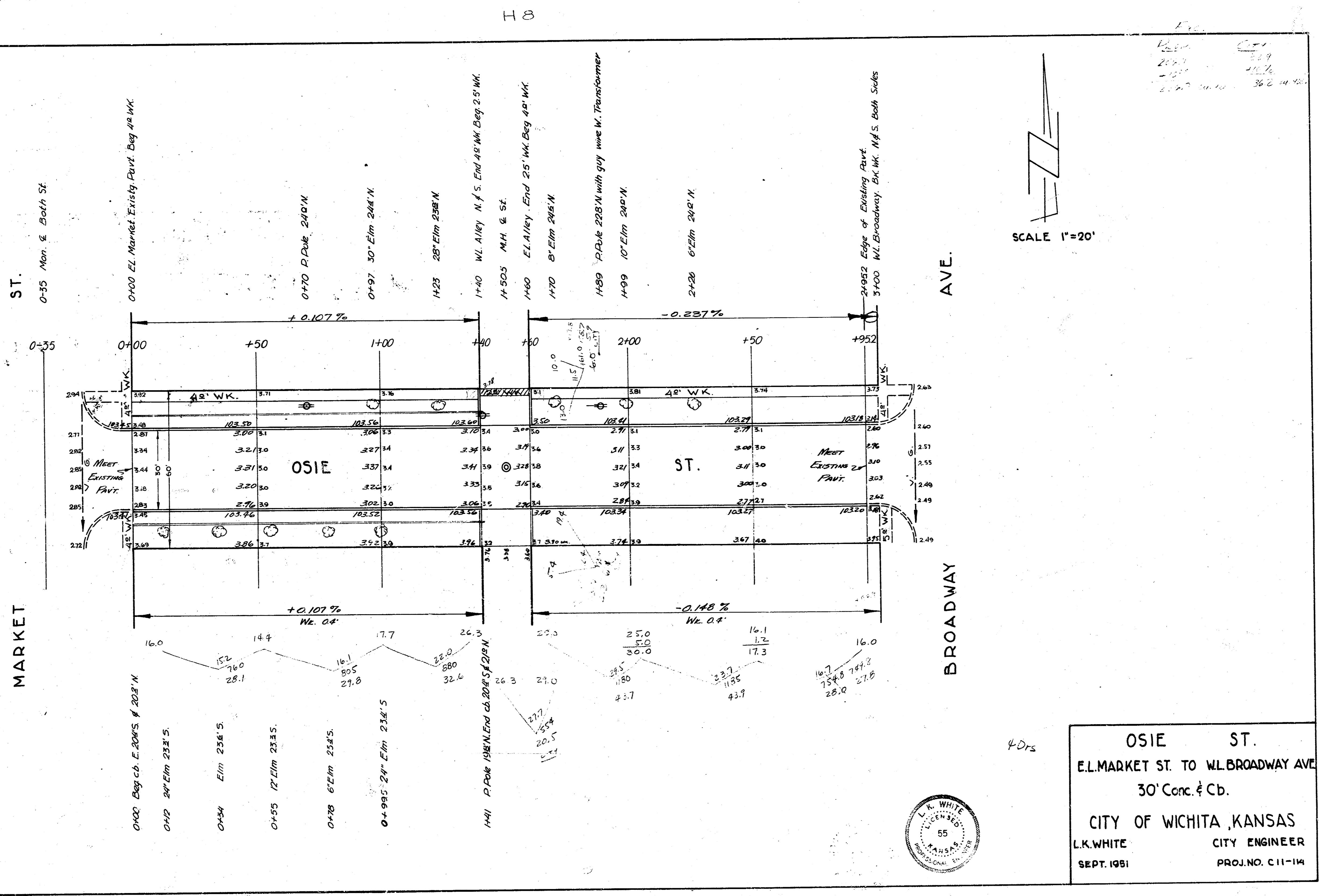


B.M. 10276 Iron in Thin NS Osie & Topeda.  
 B.M. 10204 'X' on cb. Nend C.B. NE. cor. Emporia & Osie

NOTE: Cheaning & Osie St. going East



OSIE ST.  
 E.L. MARKET ST. TO W.L. BROADWAY AVE.  
 30' Conc. & Cb.  
 CITY OF WICHITA, KANSAS  
 L.K. WHITE CITY ENGINEER  
 SEPT. 1981 PROJ. NO. C11-114

