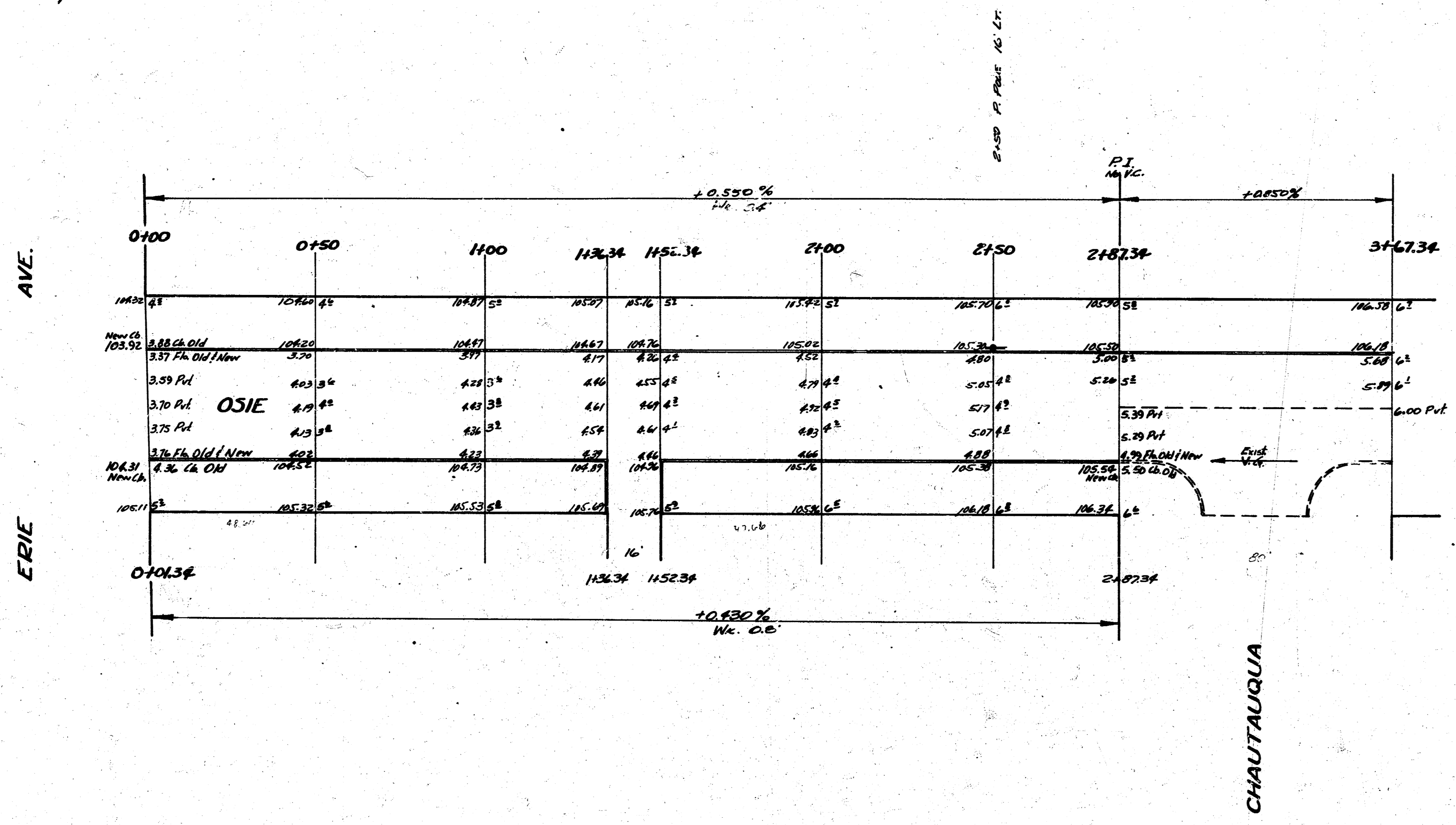


H-1

B.M. 103.75 'G' in Globe N end N.E. return Osie & Erie  
B.M. 105.54 'G' in Globe S. Cb. W.S. Chautauqua.



OSIE  
 E. L. ERIE to & CHAUTAUQUA  
 30' CONC. F. CB.  
 CITY OF WICHITA, KANS.  
 L. K. WHITE CITY ENGINEER  
 AUG. 1951 PROJ. NO. C11-212

48153