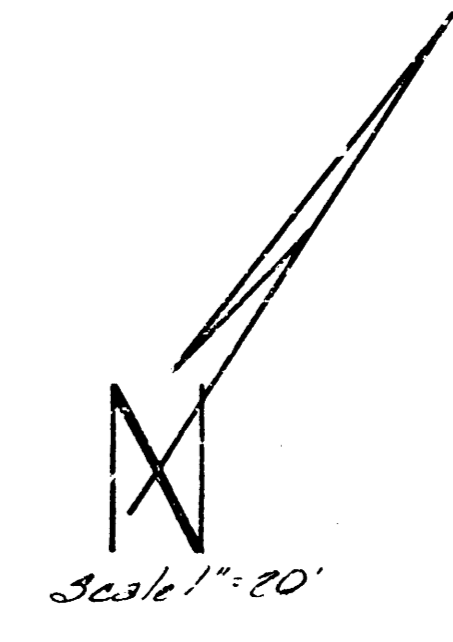
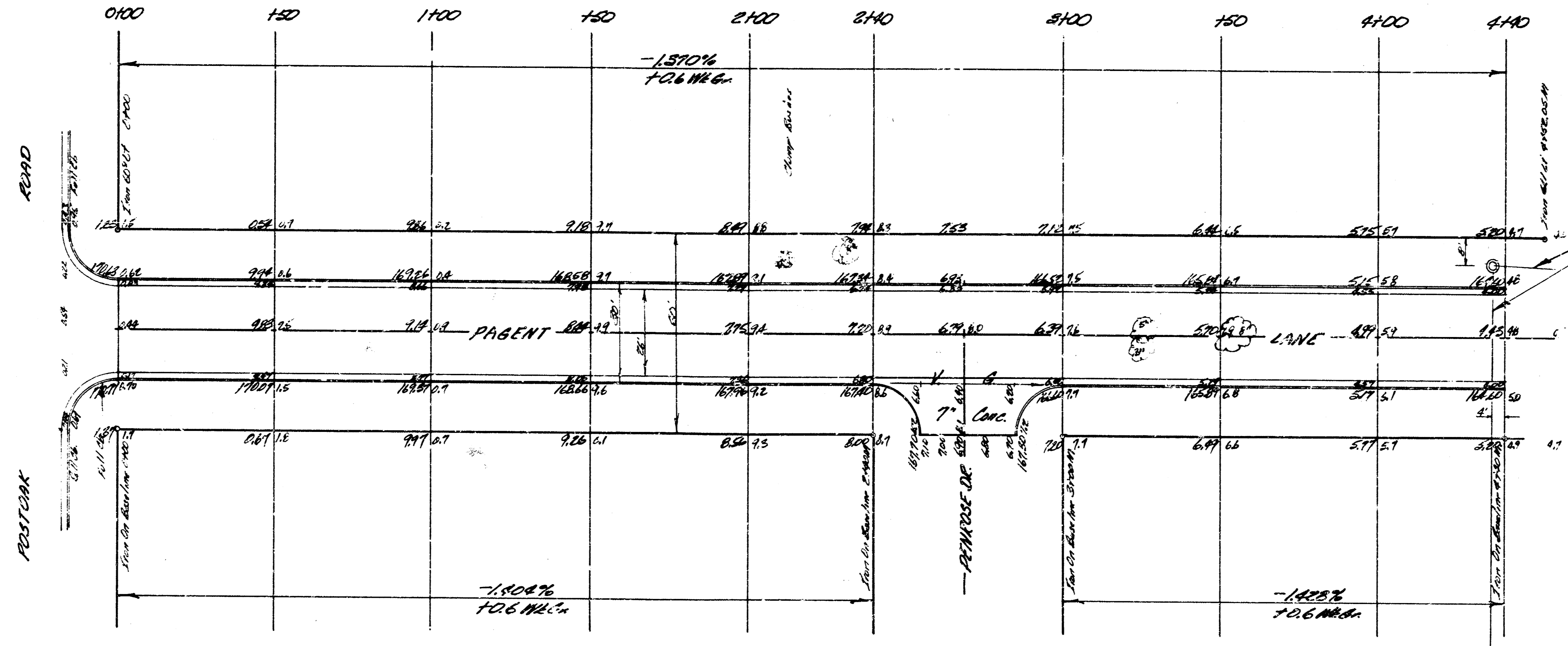


B.M. 170.97 2" in Ritchie Top H.C. Parham, B.M. N. Edward Co.

APPROVED
BY
DATE



Excavation	
Prop.	City
1287.0 CY	144.5 CY
122.7 10%	19.5 10%
1349.7 CY Total	159.0 CY Total

PAGENT LANE
 EL. Post Oak Road To EL. 1st
 Blk. 2, Rockwood 5th Addn.
 26'-2"-30' AC.
 CITY OF WICHITA, KANSAS
 B.E. SMITH CITY ENGINEER
 DATE MAY 1966 PROJ. C1E-68



1/2