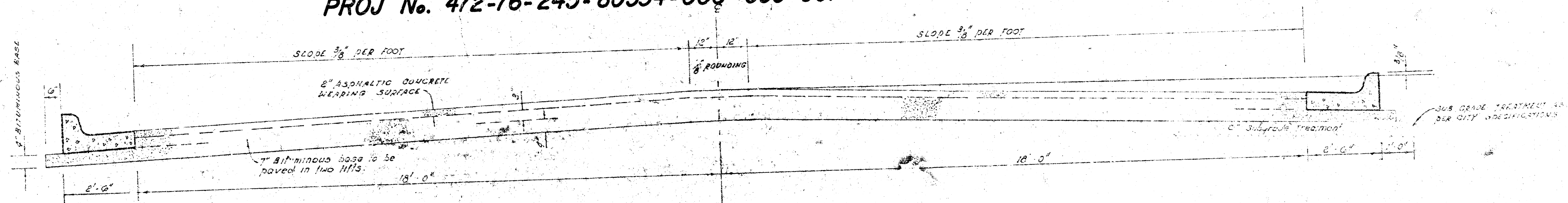


**PARKDALE STREET**  
**N.L. NANTUCKET TO N.L. LOT 13, BLOCK 20,**  
**WESTLINK VILLAGE 14TH ADDITION.**  
**PROJ No. 472-76-245-80534-000-000-001**



The A.C. pavement between the curb & gutter shall be paid as 30 yds 9" A.C. pavement (1" bituminous base). The bituminous base under the curb & gutter shall be paid as 50 yds 1" bituminous base.

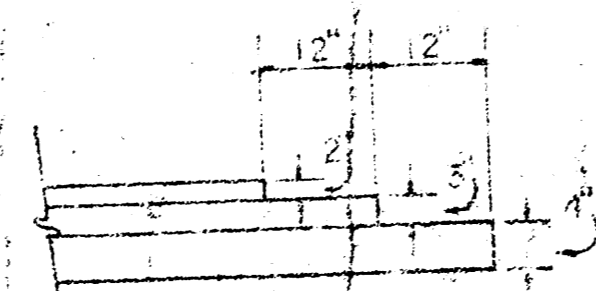
**TYPICAL SECTION**

**4' ASPHALTIC CONCRETE PAVEMENT WITH BITUMINOUS BASE**

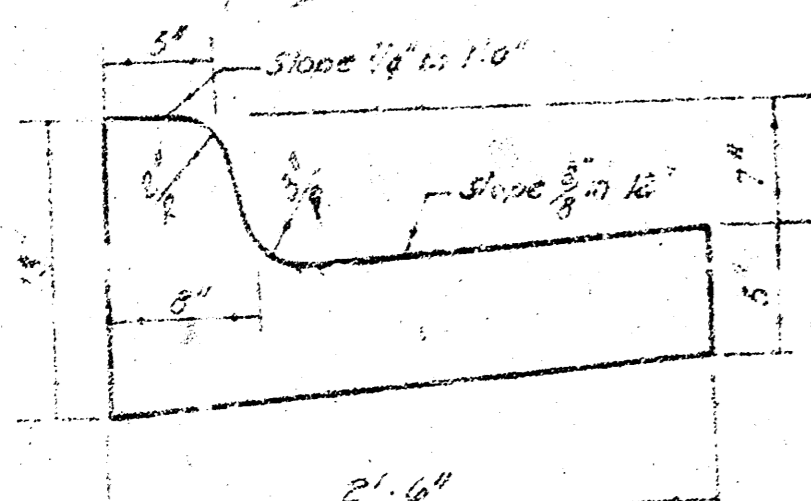
A TACK COAT OF EMULSIFIED ASPHALT (SS-1H) SHALL BE APPLIED AT AN APPROXIMATE RATE 0.05 GALLONS PER SQ YD BETWEEN LIFTS OF ASPHALTIC MATERIALS WHEN ORDERED BY THE ENGINEER. TACK COAT WILL NOT BE PAID FOR DIRECTLY AND SHALL BE CONSIDERED AS SUBSIDIARY TO PRICE BID FOR ASPHALTIC PAVEMENT. BITUMINOUS BASE AND ASPHALTIC CONCRETE WEARING SURFACE SHALL BE PLACED WITH A LAYDOWN MACHINE HAVING AUTOMATIC ELECTRONIC CONTROLS FOR CROWN AND GRADE. CONSTRUCTION JOINTS IN EACH LIFT SHALL BE STAGGERED A MINIMUM DISTANCE OF 1' WITH JOINTS IN PRECEDING LIFTS AND SUCH THAT A JOINT WILL BE CONSTRUCTED ON THE PAVEMENT CENTERLINE IN THE TOP LIFT.

**DETAIL OF TRANSVERSE CONSTRUCTION JOINTS**

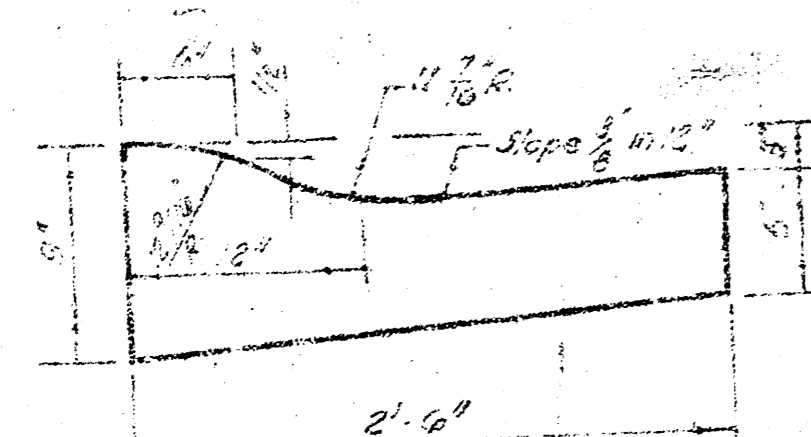
TRANSVERSE CONSTRUCTION JOINTS SHALL BE CONSTRUCTED IN FLEXIBLE BASE PAVEMENTS AT LOCATIONS WHERE PAVEMENT TEMPORARILY ENDS TO FACILITATE FUTURE PAVEMENT CONSTRUCTION AS SHOWN BY DETAIL. THE COST OF CONSTRUCTING THE TRANSVERSE CONSTRUCTION JOINTS SHALL NOT BE MEASURED OR PAID FOR DIRECTLY BUT SHALL BE INCLUDED IN THE BID PRICE FOR SQUARE YARDS OF ASPHALTIC CONCRETE PAVEMENT.



**COMBINED CURB & GUTTER**



**ROLL TYPE CURB & GUTTER**

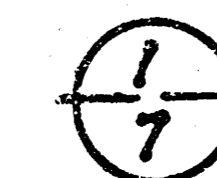


**CITY OF WICHITA, KANSAS**

DEPARTMENT of PUBLIC WORKS - Engineering Division.

R. W. LINN CITY ENGINEER

DATE \_\_\_\_\_ Proj. No. \_\_\_\_\_



**FILMED FROM THE BEST AVAILABLE COPY.....**

B.M. 156.63 R.R. Spike N. to p.p. approx 90' W. & 20' S. of  
 N.W. cor 13TH & PARKDALE -- Gls p.p. W. MAIZE RD --  
 B.M. 155.83 Top metal pipe S.L. 10TH ST & 120' West  
 W.L. PARKDALE.

CURVE DATA BASED ON  $\Delta$  RADIUS 285.00'  $\Delta$  57° 30'

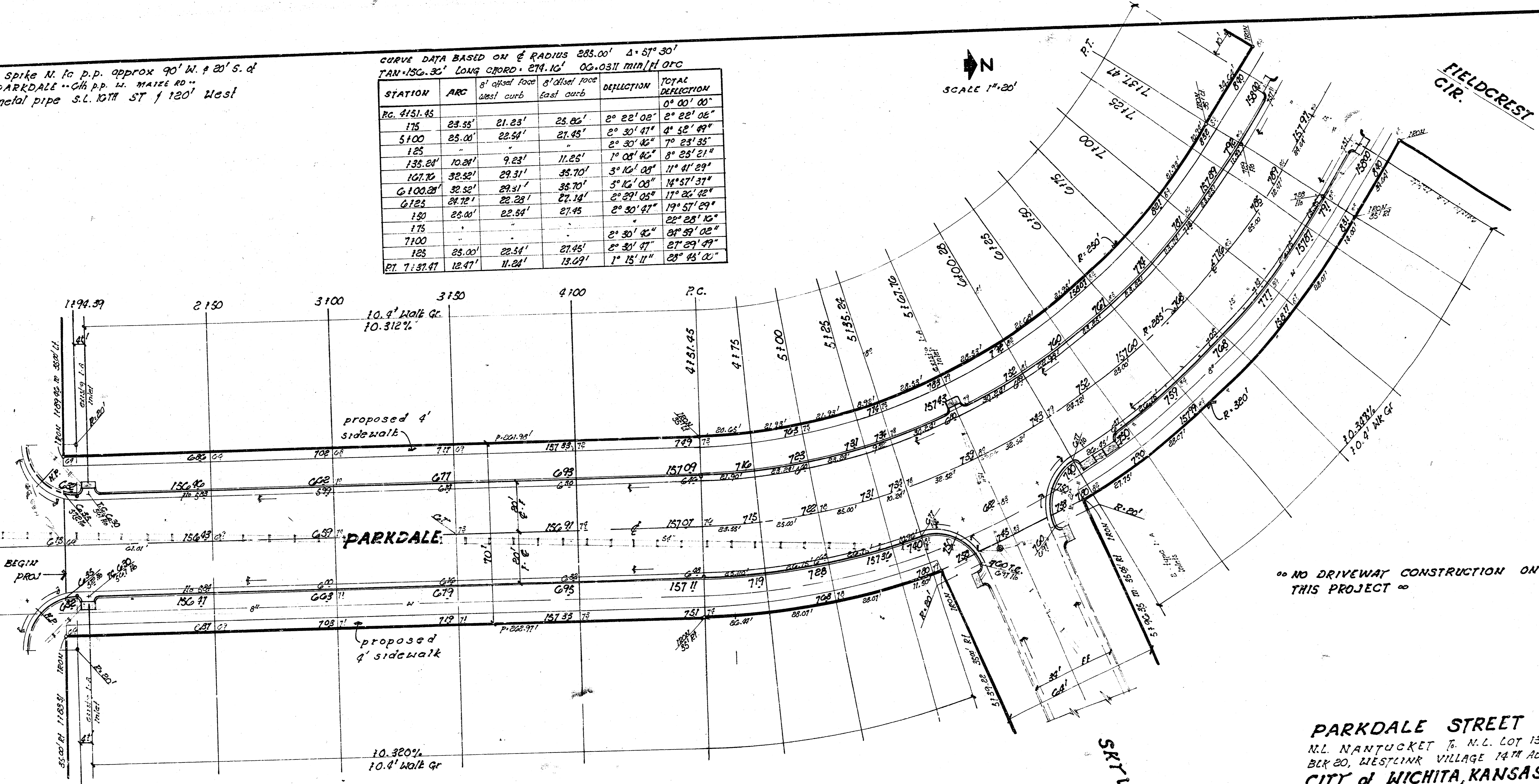
TAN 156.36' LONG CHORD 274.16' OG 0.0311 MIN/H FT ORC

STATION	ARC	S' offset from West curb	S' offset from East curb	DEFLECTION	TOTAL DEFLECTION
PC 4151.45				0° 00' 00"	
175	23.58'	21.23'	25.85'	2° 22' 02"	2° 22' 02"
5100	25.00'	22.54'	27.45'	2° 30' 47"	4° 52' 49"
125				2° 30' 46"	7° 23' 35"
135.24'	10.24'	9.23'	11.25'	1° 08' 46"	8° 23' 21"
107.70'	32.52'	29.31'	35.70'	3° 16' 00"	11° 41' 29"
6100.28'	32.52'	29.31'	35.70'	5° 16' 00"	14° 57' 37"
6125	24.72'	22.28'	27.14'	2° 29' 05"	11° 26' 42"
150	25.00'	22.54'	27.45'	2° 30' 47"	19° 57' 29"
175					22° 28' 16"
7100				2° 30' 46"	24° 59' 02"
125	25.00'	22.54'	27.45'	2° 30' 47"	27° 29' 49"
PT. 7137.47	12.47'	11.24'	13.09'	1° 15' 11"	28° 45' 00"

SCALE 1"=20'

NANTUCKET STREET

FIELDCREST CIR.



NO DRIVEWAY CONSTRUCTION ON THIS PROJECT

7-20' DRIVES MAXIMUM

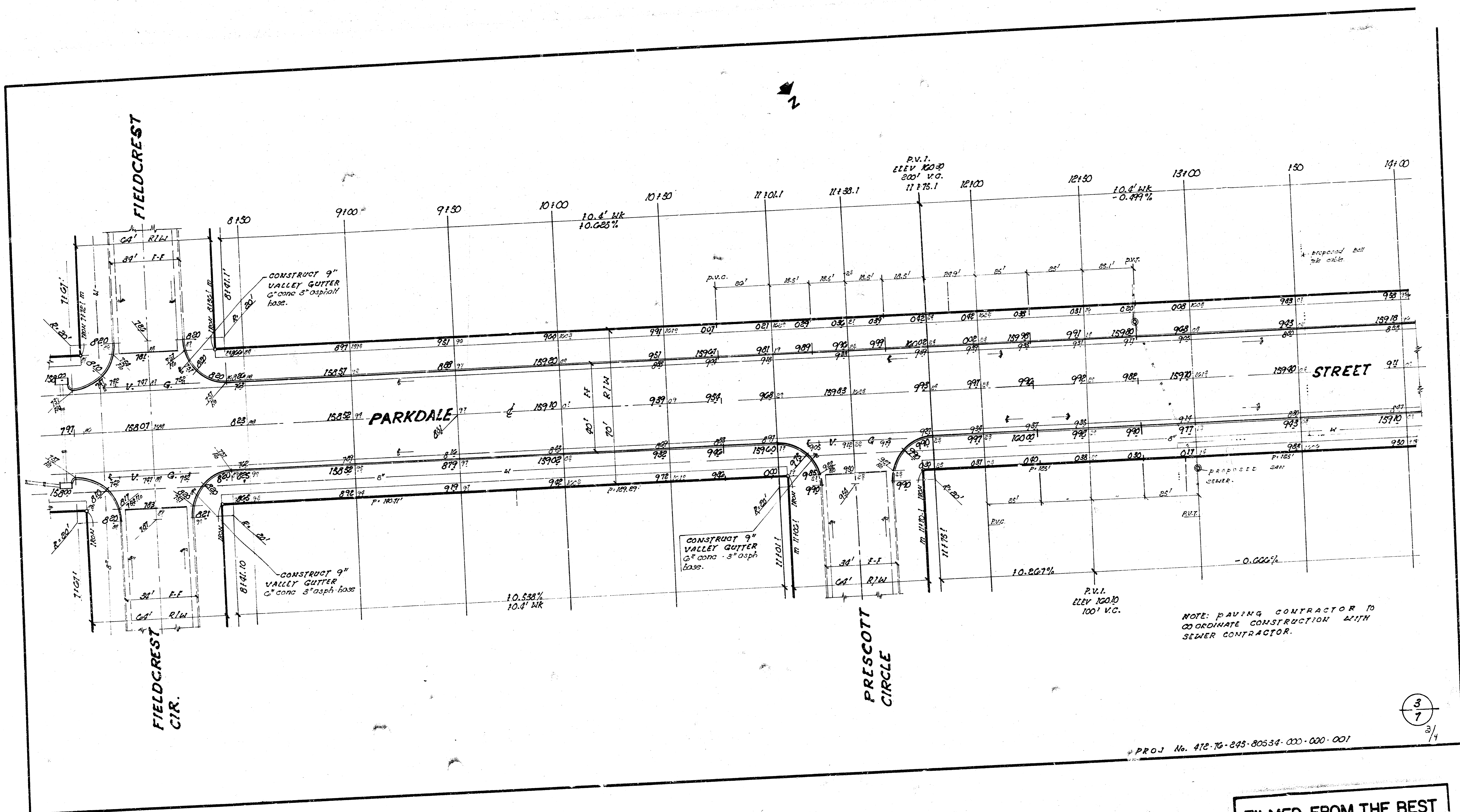
<b>PROPERTY</b>		<b>EARTHWORK</b>	
EXCAVATION	3919.5 CU YDS	EXCAVATION	1337.7 CU YDS
10% 392.0		135.8	
<b>TOTAL 4311.5 CU YDS</b>		<b>TOTAL 1473.5 CU YDS</b>	

**SUB-GRADE**  
 TYPE OF SUB-GRADE TREATMENT SHALL BE DETERMINED BY THE FIELD ENGINEER. SUB-GRADE TREATMENT MAY CONSIST OF LIME TREATMENT, CEMENT TREATMENT, SUB-GRADE MODIFICATION, OR ANY COMBINATION OF THESE.  
 7195 SQ YDS MANIPULATION

2/7

**PARKDALE STREET**  
 N.L. NANTUCKET TO N.L. LOT 13,  
 BLK 20, WESTLINK VILLAGE 14TH ADD.  
**CITY OF WICHITA, KANSAS**  
 (40' FT) 2" ASPH CONC WEARING SURFACE  
 7" BITUMINOUS BASE BY COMB CURB & GTR.  
 R. W. LINN CITY ENGINEER  
 DATE:  
 PROJ. No. 472-76-245-80534-000-000-001

FILMED FROM THE BEST AVAILABLE COPY

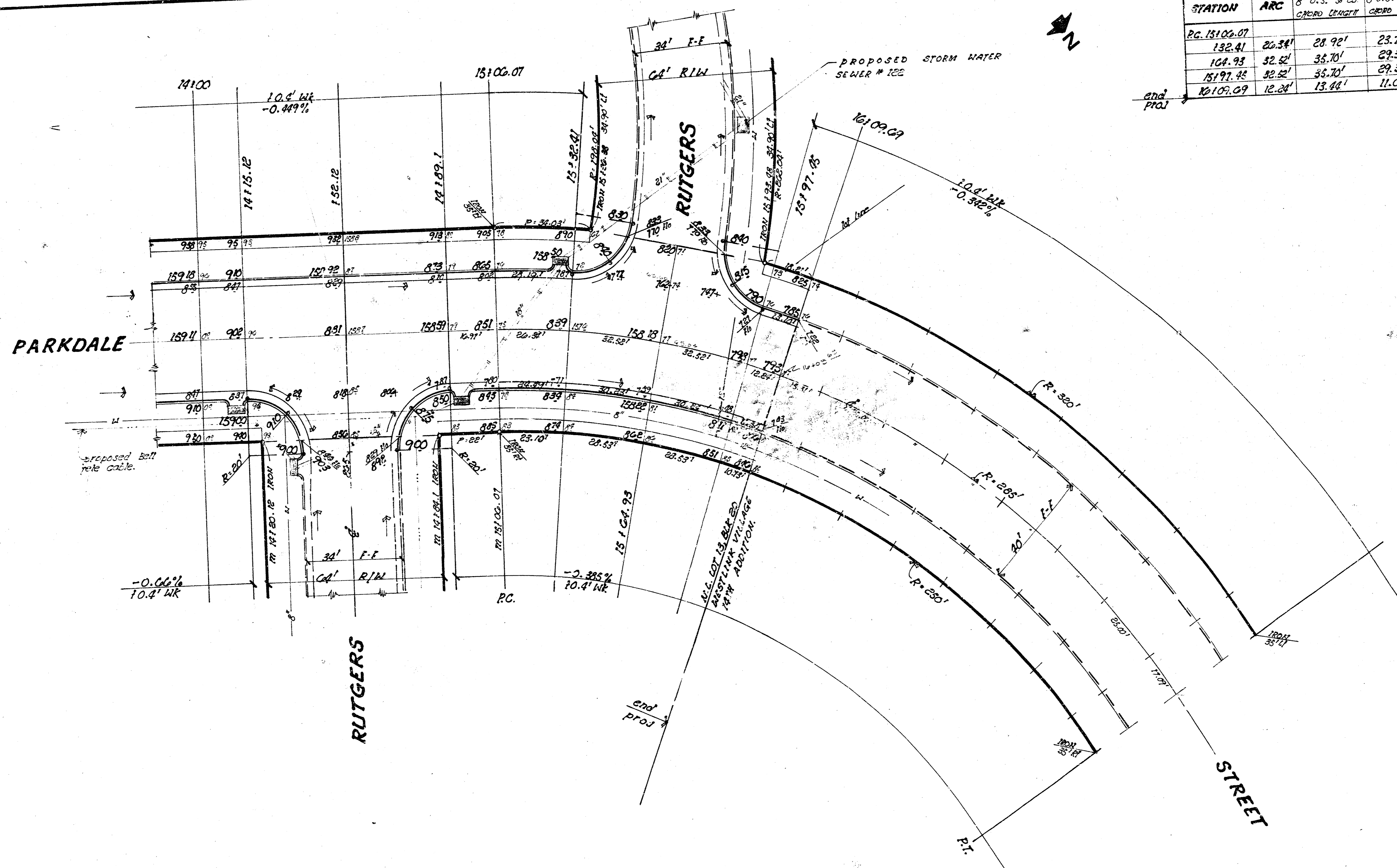


NOTE: PAVING CONTRACTOR TO COORDINATE CONSTRUCTION WITH SEWER CONTRACTOR.

3  
7  
3/4

PROJ. No. 412-76-245-80534-000-000-001

FILMED FROM THE BEST AVAILABLE COPY.....



CURVE DATA BASED ON  $\phi$  RADIUS 285.00'  
 $\Delta = 57^{\circ} 30'$

STATION	ARC	S' O.S. TO C.S. CHORD LENGTH	S' O.S. TO C.S. CHORD LENGTH	DEFL	TOTAL DEFL
PC 15102.07					0° 00' 00"
132.41	26.54'	28.92'	23.74'	2° 38' 52"	2° 38' 52"
104.93	32.52'	35.70'	29.31'	3° 15' 08"	5° 53' 00"
151.97.45	32.52'	35.70'	29.31'	3° 16' 08"	9° 11' 02"
PT 109.09	12.24'	13.96'	11.04'	7° 15' 49.4"	10° 21' 57.4"

PROJ No. 472-76-245 80534 000 000 001

4  
7  
4/4

FILMED FROM THE BEST  
 AVAILABLE COPY.....