

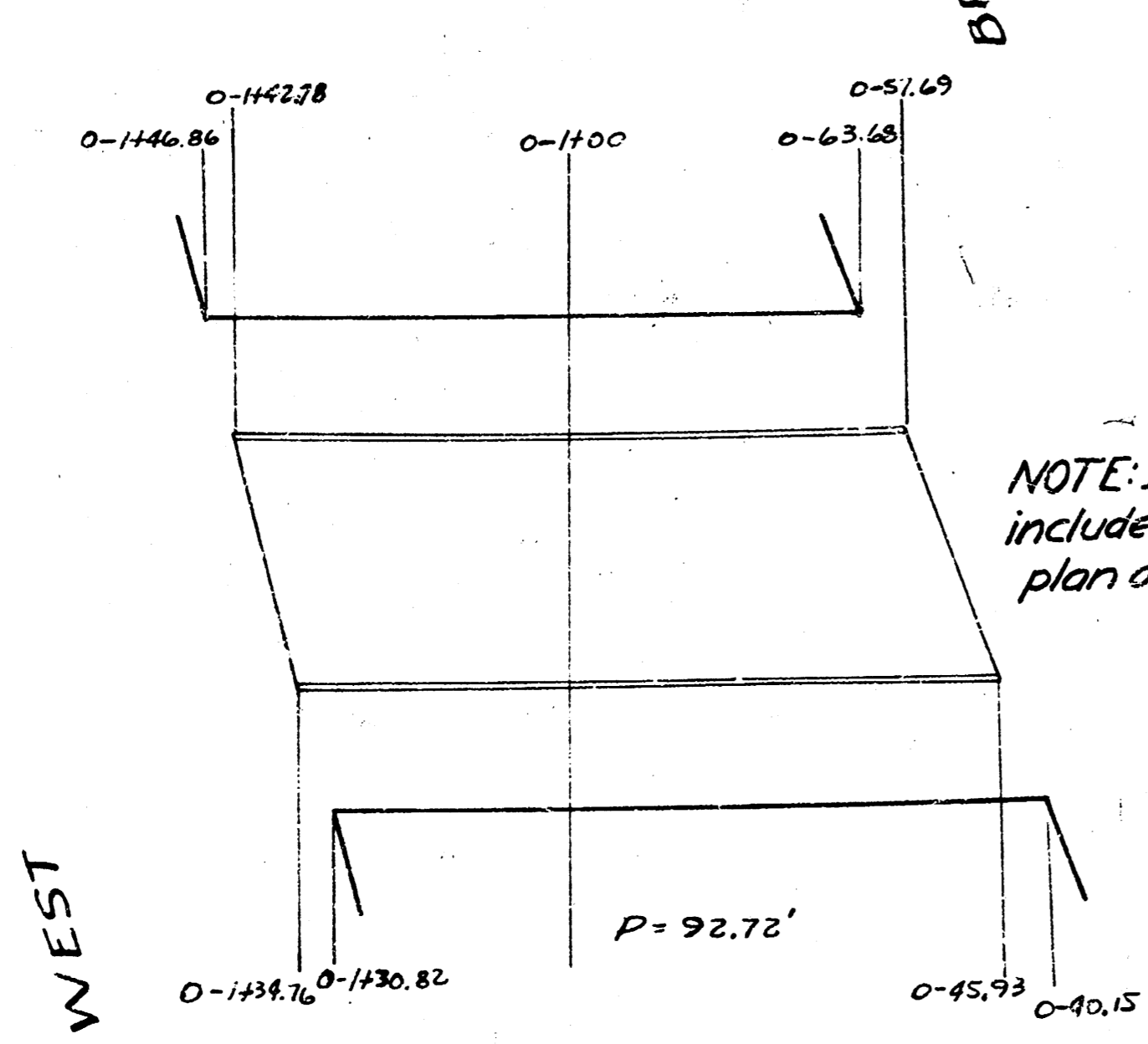
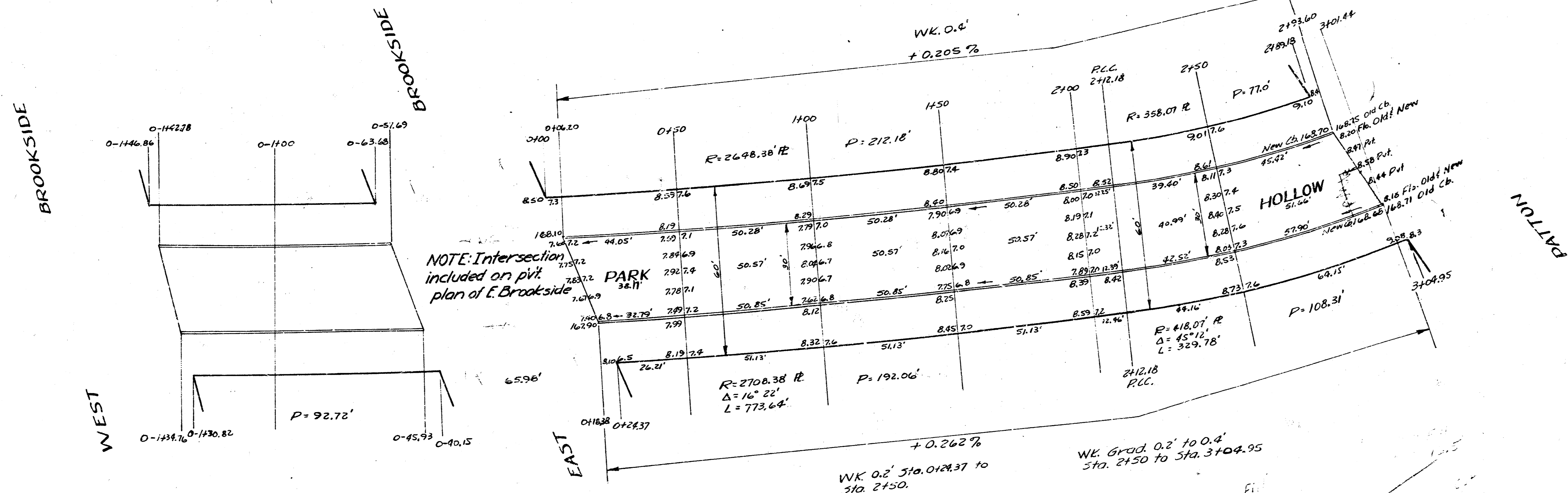
C.M. Beck 68

B.M. 169.54 "6" in Globe, S. cb. Park Hollow, E.L. Patton

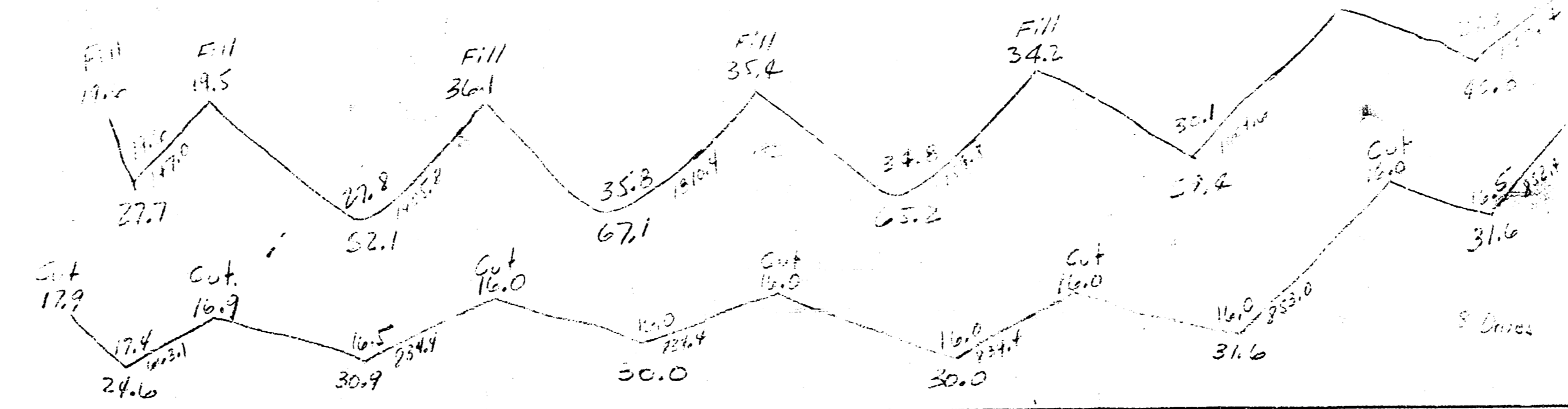
NOTE: Stationing is on N.R.L.

NOTE: Top 6" of ground under pvt is to be bladed before fill is made.

Prop	City
29.4	0
29.9	0
30.0	0
30.0	0
31.6	0
17.0	0
164.1	0
16.4	0
170.5	0



NOTE: Intersection included on pvt plan of E. Brookside



PARK HOLLOW DRIVE
 EL. W. BROOKSIDE PKY.-WL. PATTON
 30' Conc. & Cb.
 CITY OF WICHITA, KANS.
 L.K. WHITE City Engineer
 MAY 1950 Pro. No. C10-66