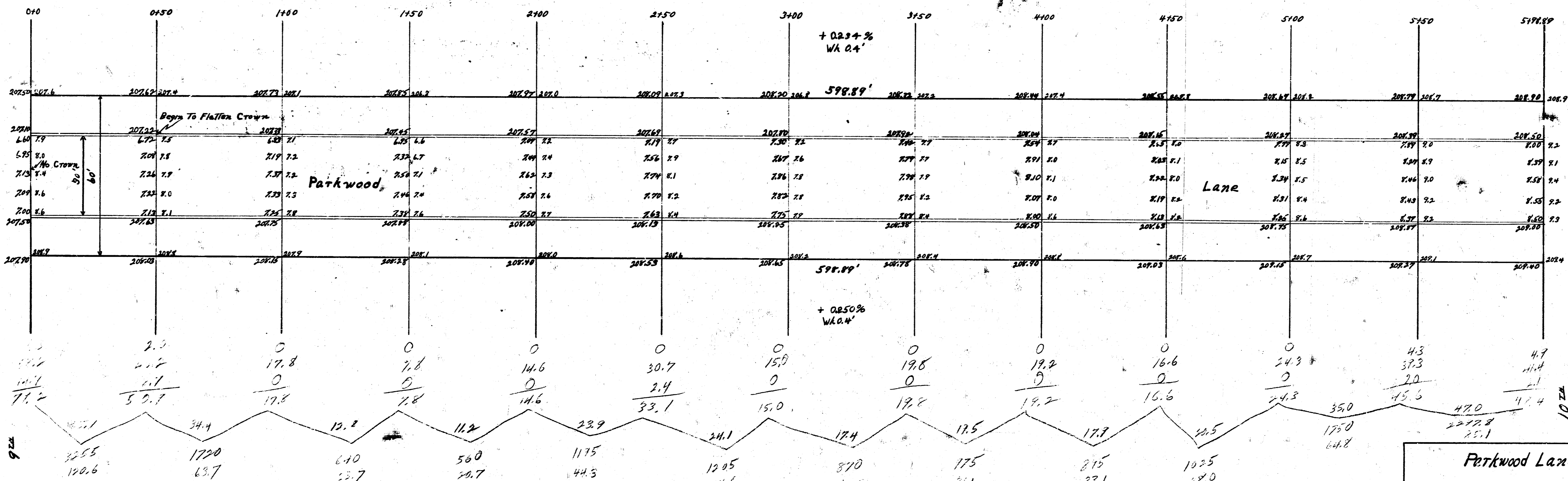
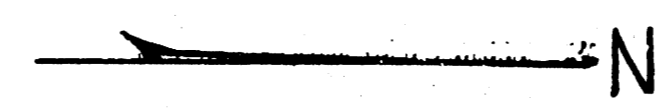


B.M. 20925 Conc. Base S.S. Cor. Post E. Parkwood 10th
 B.M. 20704 "E" in Globe S. End Rad. E. Ch. Parkwood, S.L. 9th

Property
 124.9
 33.7
 10.3
 44.3
 35.2
 26.1
 33.1
 38.2
 64.8
 25.1
 306.7
 7.97
 687.6 a. 74



Parkwood Lane
 N.L. 9th S.L. 10th
 50' Conc. Cb.
 City of Wichita, Kansas
 L.K. White City Engineer
 February 1948 Project C18-5