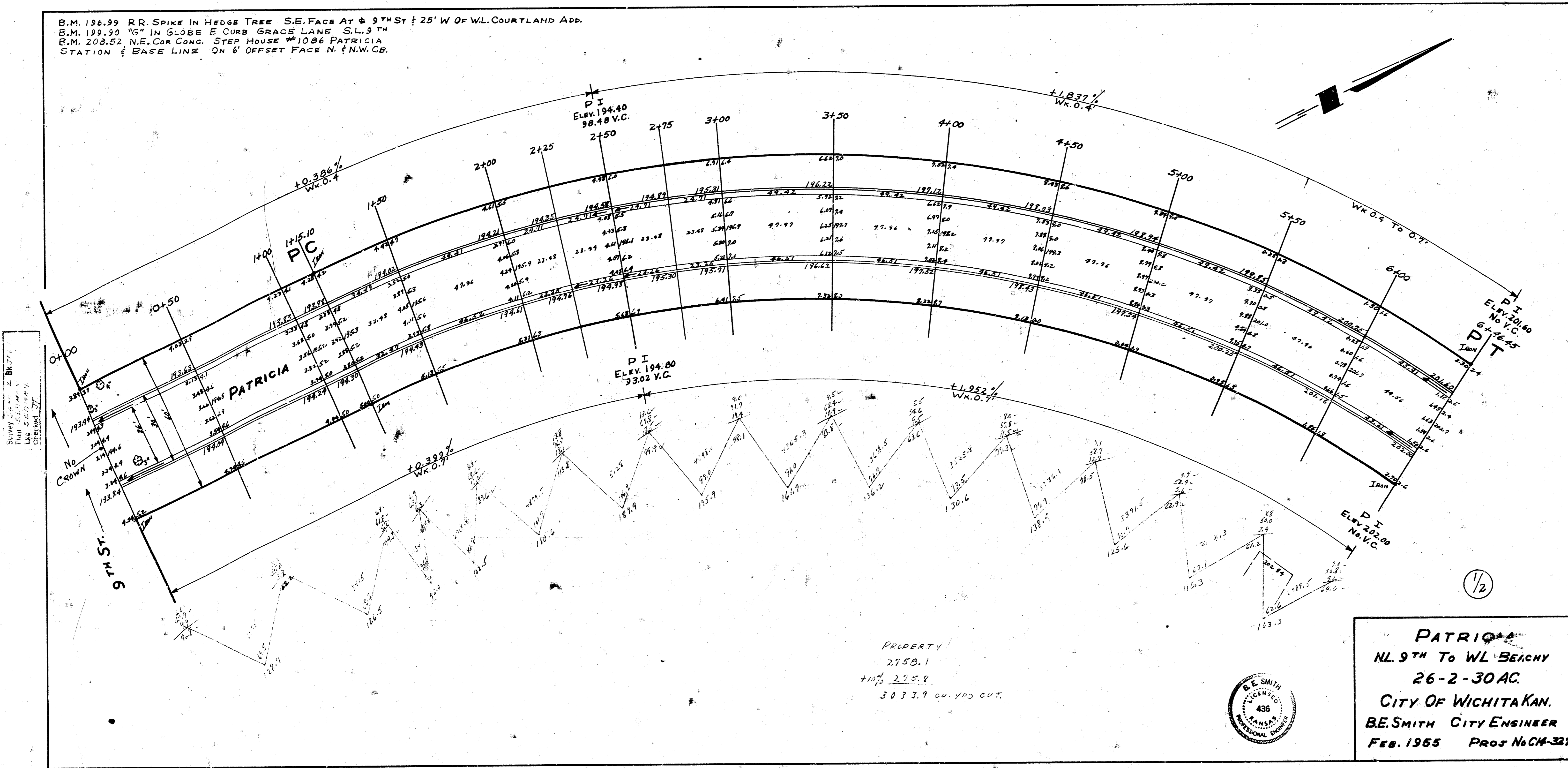


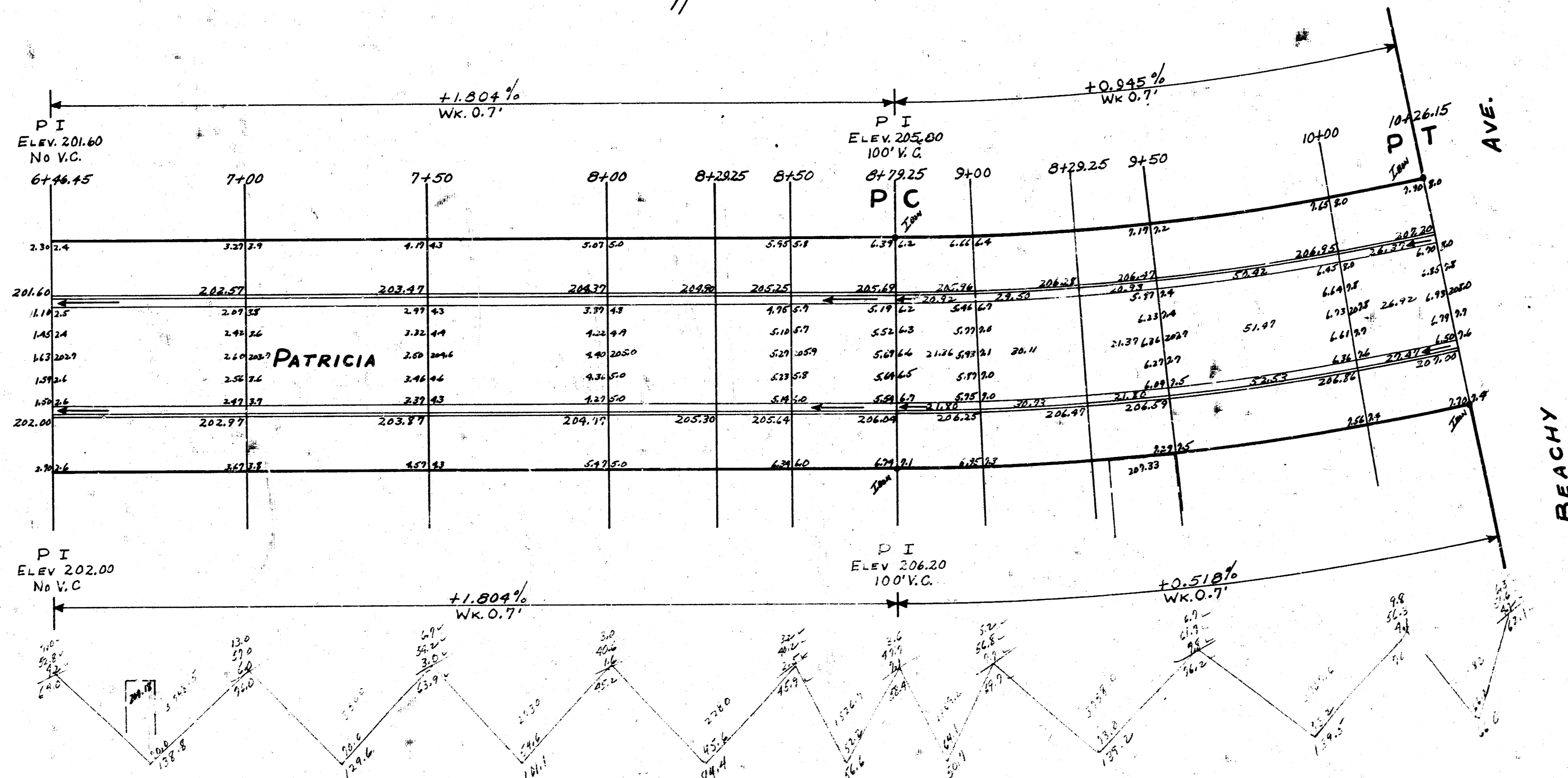
B.M. 196.99 RR SPIKE IN HEDGE TREE S.E. FACE AT 9TH ST 25' W OF WL COURTLAND ADD.
 B.M. 199.90 1/2" IN GLOBE E CURB GRACE LANE S.L. 9TH
 B.M. 208.52 N.E. COR CONC. STEP HOUSE #1086 PATRICIA
 STATION 1/2 BASE LINE ON 6' OFFSET FACE N. & N.W. CB.



1/2

1-3

CURVE DATA BASED ON E-OFFSET F.C. N.W.C.B. $\Delta=59^\circ$ R=516'				
STATION	CHORD OFFSET SE CB	CHORD OFFSET N.W. CB	DEF L	TOTAL DEF.
1+50	32.06	34.90	1° 56' 16"	1° 56' 16"
2+00	45.91	49.98	2° 46' 34"	4° 42' 50"
2+50	45.91	49.98	2° 46' 34"	7° 29' 24"
3+00	45.91	49.98	2° 46' 34"	10° 15' 58"
3+50	45.91	49.98	2° 46' 34"	13° 2' 32"
4+00	45.91	49.98	2° 46' 34"	15° 49' 6"
4+50	45.91	49.98	2° 46' 34"	18° 35' 40"
5+00	45.91	49.98	2° 46' 34"	21° 22' 14"
5+50	45.91	49.98	2° 46' 34"	24° 0' 48"
6+00	45.91	49.98	2° 46' 34"	26° 58' 22"
6+36.45	42.65	46.93	2° 39' 44"	29° 30' 6"



CURVE DATA BASED ON E-OFFSET F.C. N.W.C.B. $\Delta=11^\circ 49'$ R=712.28				
STATION	CHORD OFFSET SE CB	CHORD OFFSET N.W. CB	DEF L	TOTAL DEF.
8+29.25				
9+00	21.97	20.75	50' 6"	30' 6"
9+29.25	30.82	29.10	1° 18' 35"	2° 41"
9+50	21.97	20.75	50' 6"	2° 30' 47"
10+00	52.94	49.99	2° 40"	4° 51' 27"
10+26.15	27.68	26.14	1° 3' 9"	5° 54' 34"

(2/2)
PATRICIA
 N.L.STH TO W.L. BEACHY