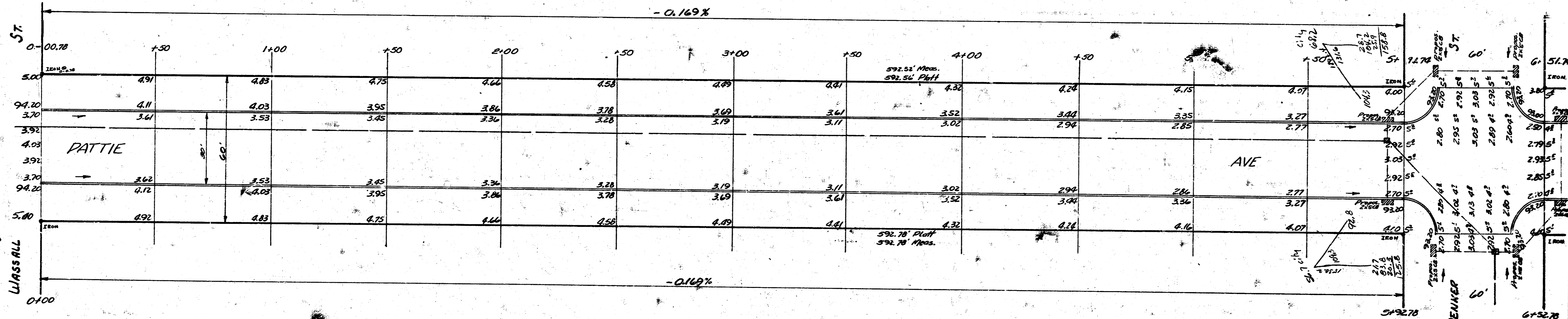


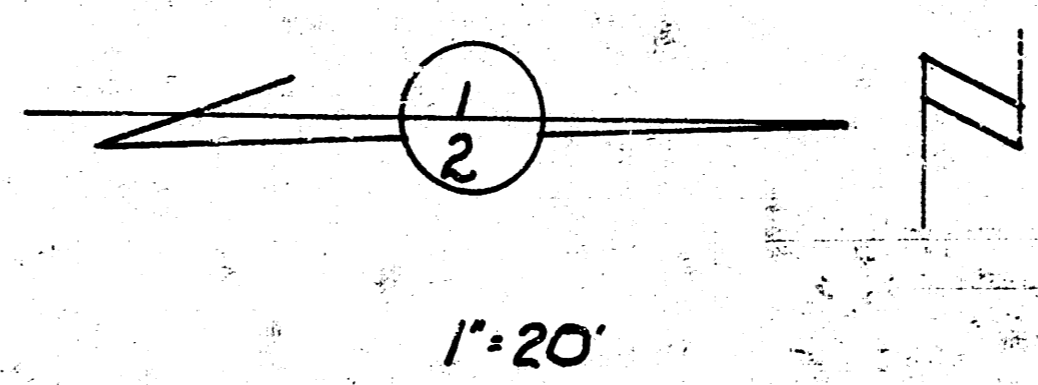
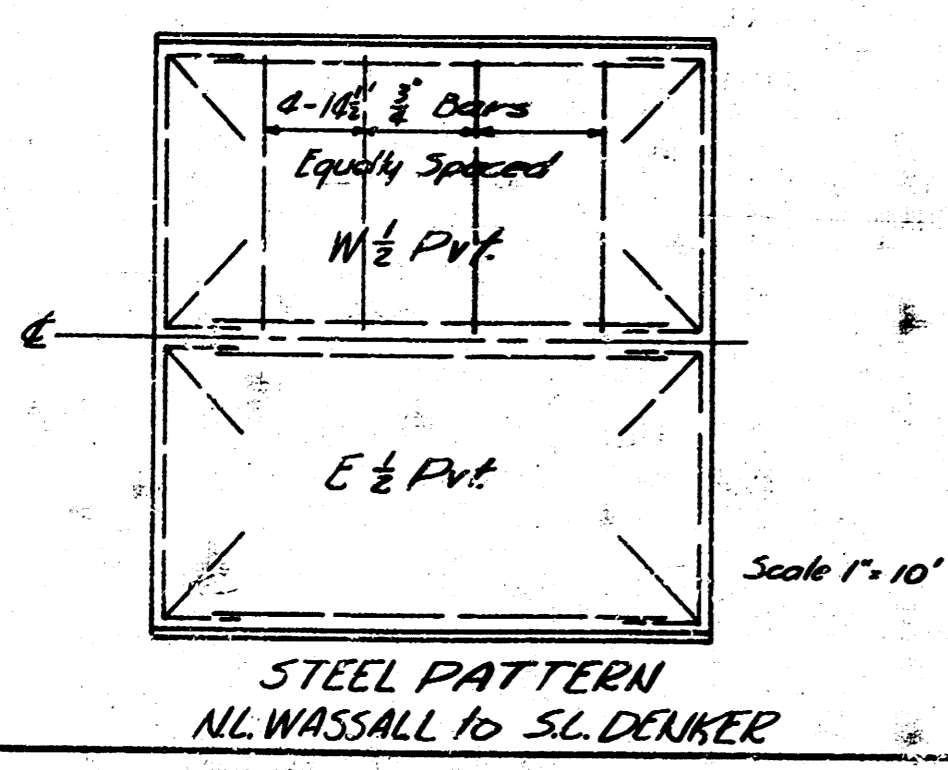
B.M. 60° SPIKE W.S. POWER POLE 35. DENKER 118° E.E.R. PATTIE 95.52

STATINGS ON E.R.
Grades set on Q. the dist.

Grand Total Excav.		Excav.	
Prop.	City	Prop.	City
x. sect. 3787.9	334.2	0	209.3
50.7	16.1		54.7
3838.6	430.3		68.2
+10% 383.9	43.0		334.2 cu. yd.
Total 4222.5 cu. yd.	Total 473.3 cu. yd.		

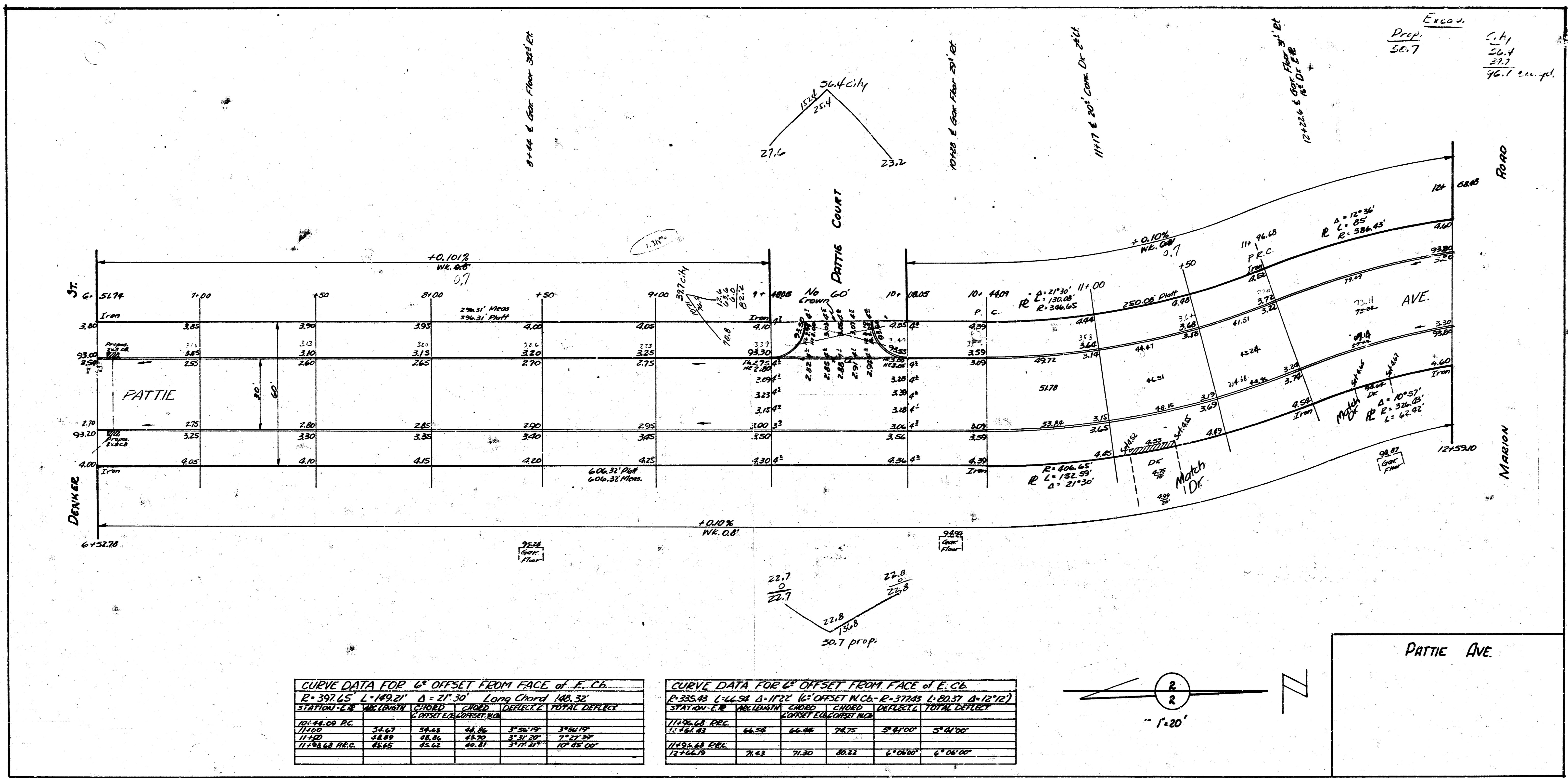


B.L. 3-7-33
 Plan. MTD
 Checked



PATTIE AVE
 N.L. WASSALL TO S.L. MAZION
 30' CONC. # CB
 CITY OF WICHITA, KANSAS
 B.L. SMITH CITY ENGINEER
 JAN. 18, 1933 Des. No. C12-198

1168



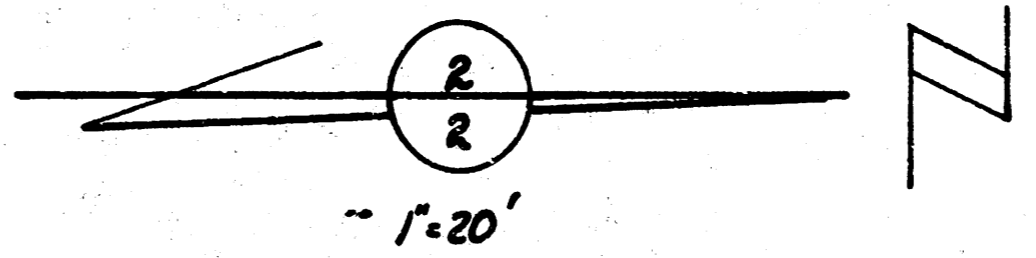
Excav.
Prop. 50.7
C.L. 56.4
27.7
76.1 cu. ft.

CURVE DATA FOR 6' OFFSET FROM FACE of E. CB

STATION	CHORD	CHORD	DEFLECT	TOTAL DEFLECT
10+44.00 P.C.	78.67	28.86	3°25'19"	3°25'19"
11+10.00	78.89	28.86	3°31'30"	7°01'39"
11+76.00 P.T.C.	79.12	28.86	3°37'41"	10°48'00"

CURVE DATA FOR 6' OFFSET FROM FACE of E. CB

STATION	CHORD	CHORD	DEFLECT	TOTAL DEFLECT
11+06.63 P.C.	64.58	22.86	2°41'00"	2°41'00"
11+72.63	64.58	22.86	2°47'11"	5°28'11"
11+38.63 P.T.C.	64.58	22.86	2°53'22"	8°15'22"



PATTIE AVE.