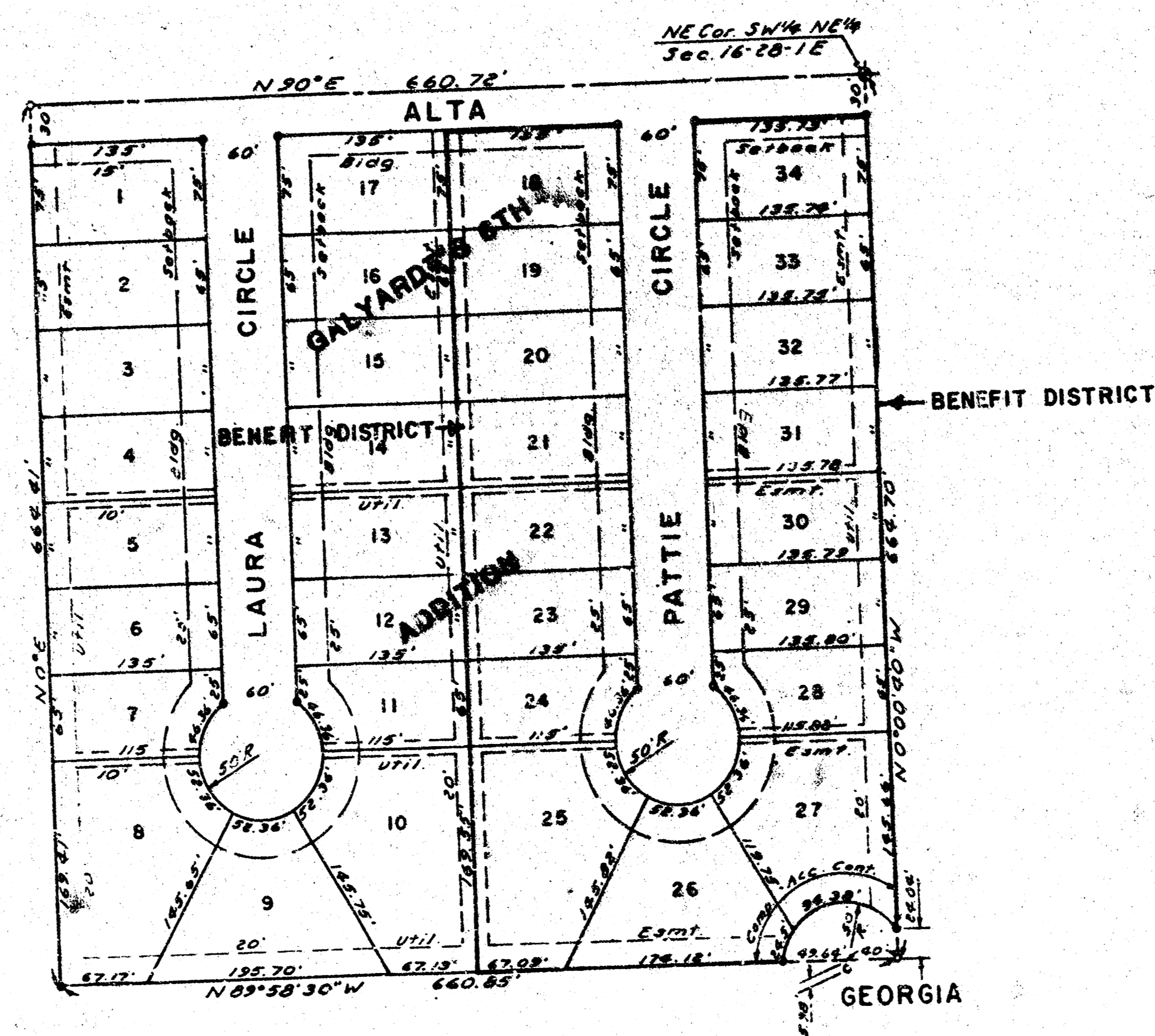


STREET IMPROVEMENTS FOR
PATTIE CIRCLE
GALYARDT'S 6TH ADDITION
PROJECT NO. 472-76-245-80837000-000-001



SCALE: 1" = 100'

GENERAL NOTES

The contractor shall be responsible for preserving the property irons. The contractor shall be required to re-establish any property irons which are damaged or destroyed by his construction operations. Such irons shall be re-established by a licensed land surveyor or a professional engineer in accordance with state laws.

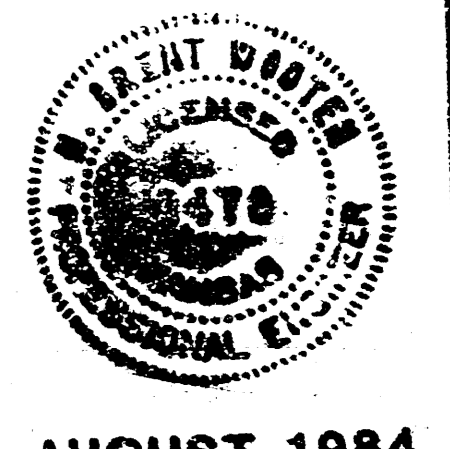
No more than 6" concrete drives shall be constructed. The concrete drives shall only be constructed and paid for by this project to the property line limit. Any other construction behind the property line will be arranged for by the developer.

CITY OF WICHITA, KANSAS
MIKE E. LINDEBAK
CITY ENGINEER

BENCH MARKS

W. Bolt Base of Fire Hydrant N. of Park Lawn Lane
 East End, Elevation = 87.10 City Datum

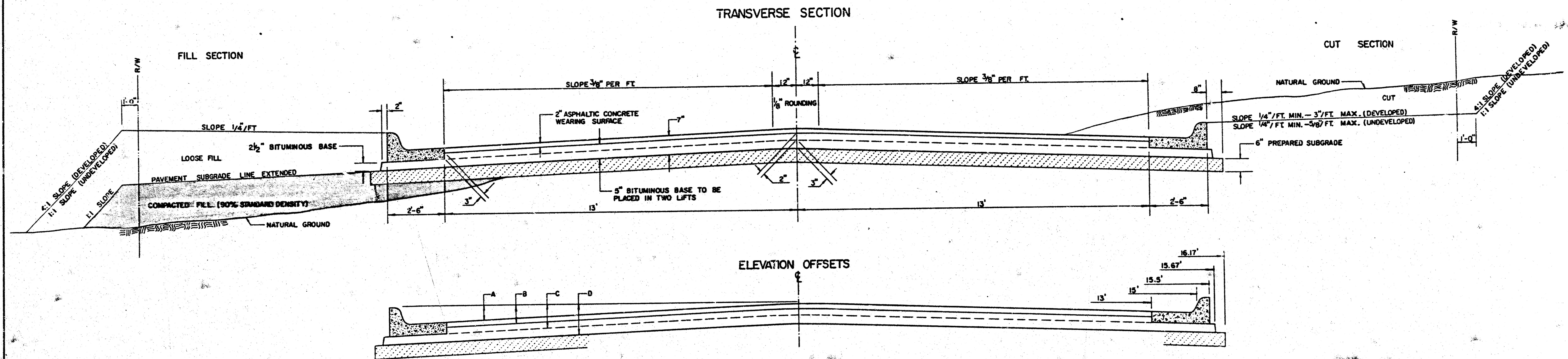
□ * Cut in Top of Curb N end of Return at SE Corner
 of Pattie Circle and Alta, Elevation = 85.61 City Datum



AUGUST 1984

BAUGHMAN COMPANY, P.A.
 SURVEYING & ENGINEERING
 314/242-7271 • 330 LAURA • WICHITA, KANSAS 67211

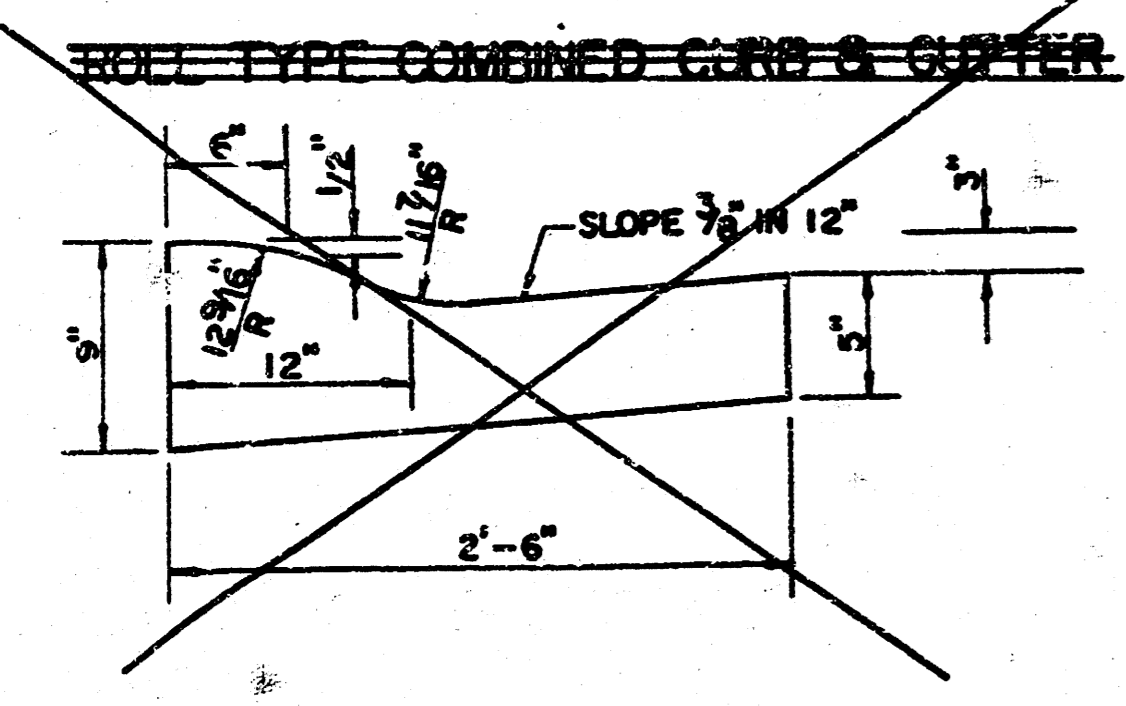
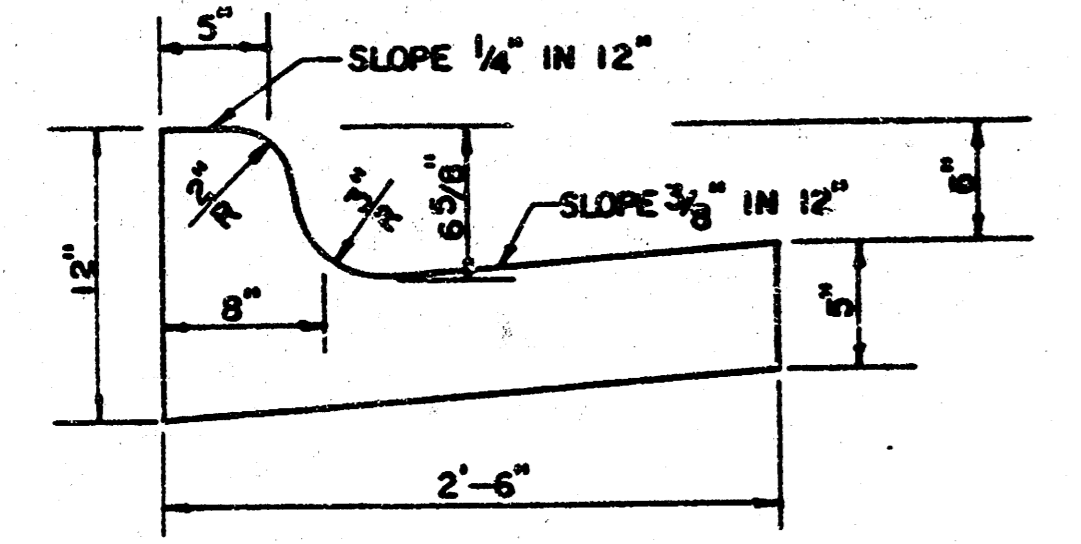
TYPICAL 3' PAVEMENT DETAILS



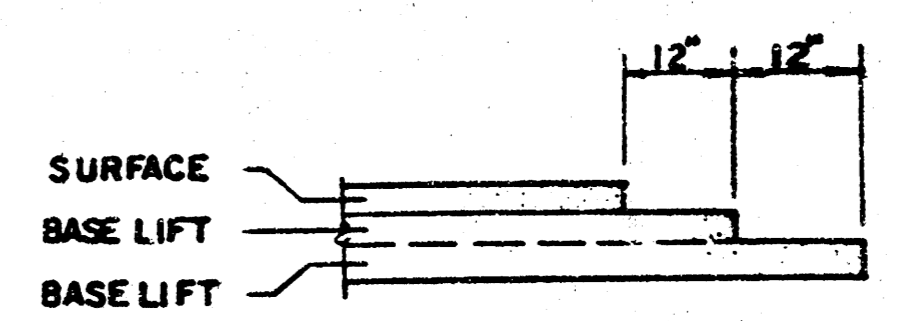
ELEVATION OFFSETS

	DISTANCE FROM CENTERLINE (LT. & RT.)											
	0'	2'	4'	6'	8'	10'	12'	14'	15'	15.5'	15.67'	16.17'
A: TOP OF CURBS TO TOP OF SURFACE LIFT	0.10	0.14	0.21	0.27	0.32	0.39	0.49	0.65	—	—	—	—
B: TOP OF CURBS TO TOP OF UPPER BASE LIFT	0.27	0.31	0.38	0.44	0.51	0.58	0.65	—	—	—	—	—
C: TOP OF CURBS TO TOP OF LOWER BASE LIFT	0.44	0.49	0.57	0.64	0.70	0.77	0.87	0.98	1.00	1.00	—	—
D: TOP OF CURBS TO TOP OF SUBGRADE	0.69	0.73	0.80	0.87	0.93	1.01	1.08	1.12	1.19	1.21	1.21	1.23

COMBINED CURB & GUTTER



TRANSVERSE CONSTRUCTION JOINTS



GENERAL NOTES

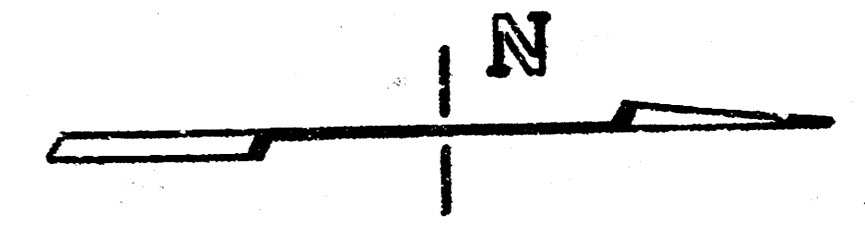
- 1) THE ASPHALTIC CONCRETE PAVEMENT BETWEEN THE COMBINED CURB AND GUTTER SHALL BE PAID AS SQUARE YARDS OF 7" ASPHALTIC CONCRETE (5" BITUMINOUS BASE).
- 2) THE BITUMINOUS BASE UNDER AND BEHIND THE COMBINED CURB AND GUTTER SHALL BE PAID AS SQUARE YARDS OF 2 1/2" BITUMINOUS BASE.
- 3) A TACK COAT OF EMULSIFIED ASPHALT (SC-1H OR CSS-1H) SHALL BE APPLIED AT AN APPROXIMATE RATE OF 0.05 GALLONS PER SQUARE YARD BETWEEN EACH LIFT OF ASPHALTIC MATERIAL.
- 4) BITUMINOUS BASE AND ASPHALTIC CONCRETE WEARING SURFACE SHALL BE PLACED WITH A LAYDOWN MACHINE HAVING AUTOMATIC CONTROLS FOR LINE AND GRADE.
- 5) CONSTRUCTION JOINTS IN EACH LIFT SHALL BE STAGGERED A MINIMUM DISTANCE OF ONE (1) FOOT FROM JOINTS IN PRECEDING LIFTS AND PLACED SO THAT A JOINT WILL BE CONSTRUCTED ON THE CENTERLINE OF THE TOP LIFT.
- 6) CONTRACTOR TO BID ONLY ONE SUBGRADE TREATMENT ALTERNATE WHEN ALTERNATES ARE PROVIDED IN THE PROPOSAL AND CONTRACT. THE ALTERNATE CHOSEN BY THE SUCCESSFUL BIDDER SHALL BE USED IN CONSTRUCTING THIS PROJECT.

TRANSVERSE CONSTRUCTION JOINTS SHALL BE CONSTRUCTED IN FLEXIBLE BASE PAVEMENTS AT LOCATIONS WHERE PAVEMENT JOINS EXISTING FLEXIBLE BASE PAVEMENT AS SHOWN BY THE DETAIL. ALL COSTS ASSOCIATED WITH THE CONSTRUCTION OF THE TRANSVERSE JOINT SHALL BE INCLUDED IN THE BID PRICE FOR SQUARE YARDS 7" ASPHALTIC CONCRETE (5" BITUMINOUS BASE).

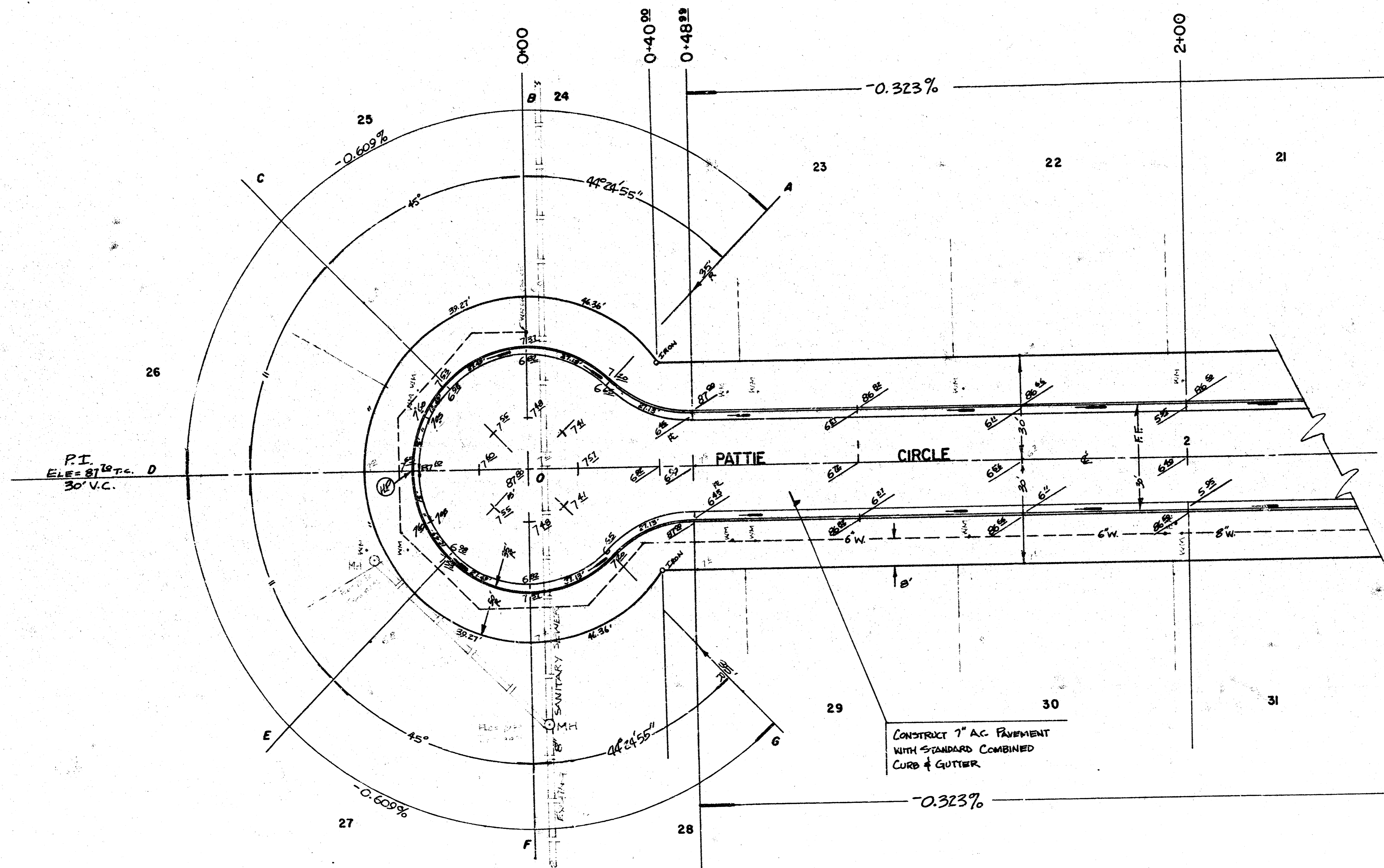
7 INCH RESIDENTIAL ASPHALTIC CONCRETE PAVEMENT WITH 5 INCH BITUMINOUS BASE
 CITY OF WICHITA, KANSAS
 PROJECT NUMBER
 472-76-245-80837-000-000-001 2/6

BENCH MARKS

W. Bolt Base of Fire Hydrant N. of Park Lawn Lane
 East End, Elevation = 87.10 City Datum
 □ Cut in Top of Curb N end of Return at SE Corner
 of Pattie Circle and Alta, Elevation = 85.61 City Datum



SCALE 1" = 20'



SYMBOLS

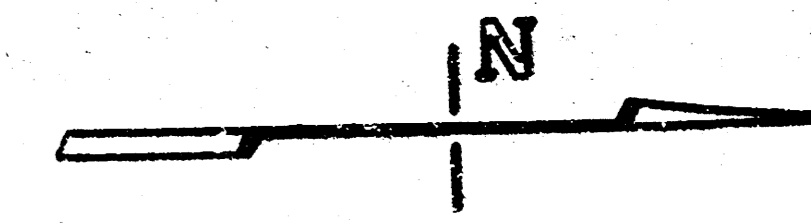
- W — WATER LINE
- S — SANITARY SEWER
- KGE — ELECTRIC LINE
- LOT LINES

EARTHWORK QUANTITIES

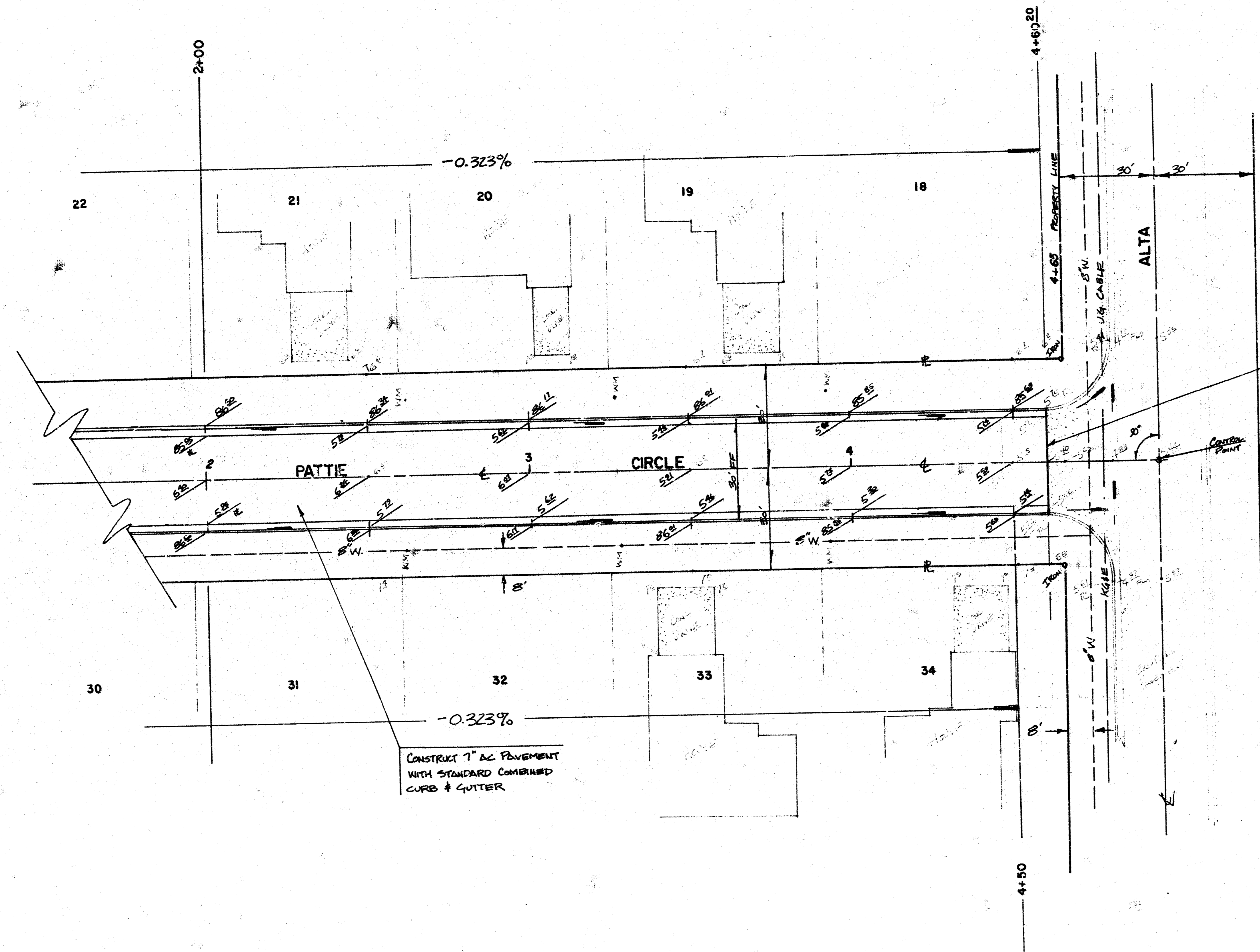
EXCAVATION = 562 CY. COMPACTED FILL = 0CY. MANIPULATION = 1993 SY.
 + 10 & = 56 CY
 TOTAL = 618 CY

PATTIE CIRCLE
 472-76-245-80837000-000-001

3/6



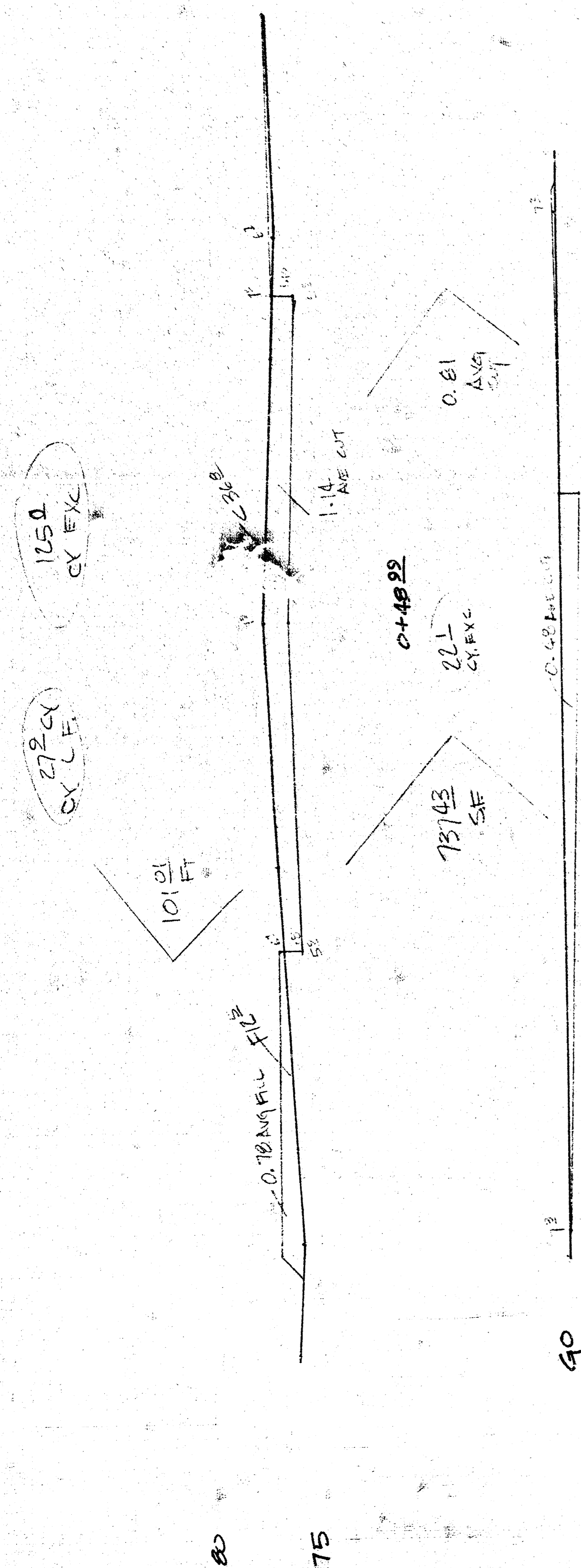
SCALE 1" = 20'



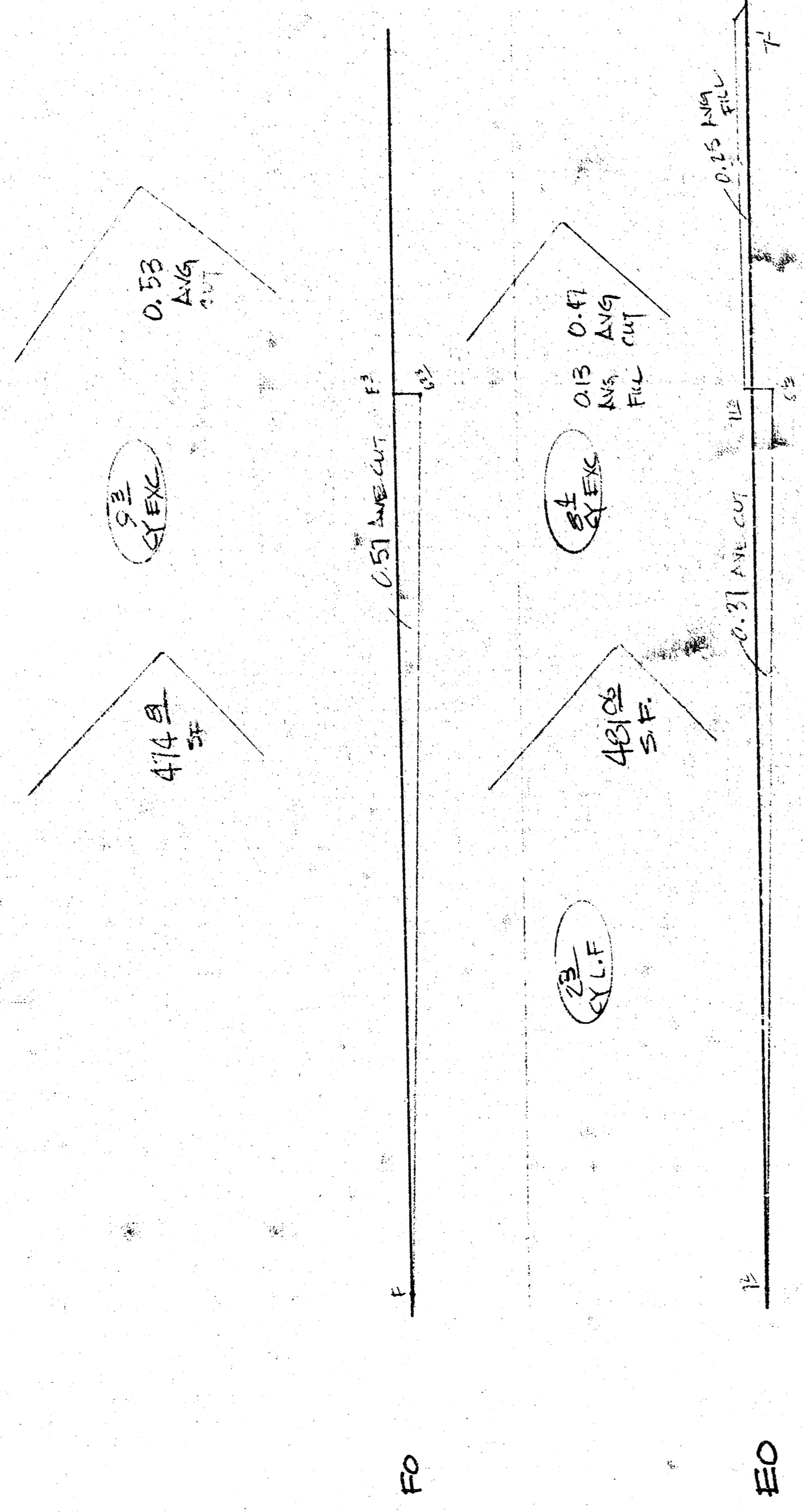
STATION 4+60.20
END CONSTRUCTION AND
MATCH EXISTING PAVEMENT

CONSTRUCT 7" AC PAVEMENT
WITH STANDARD COMBINED
CURB & GUTTER

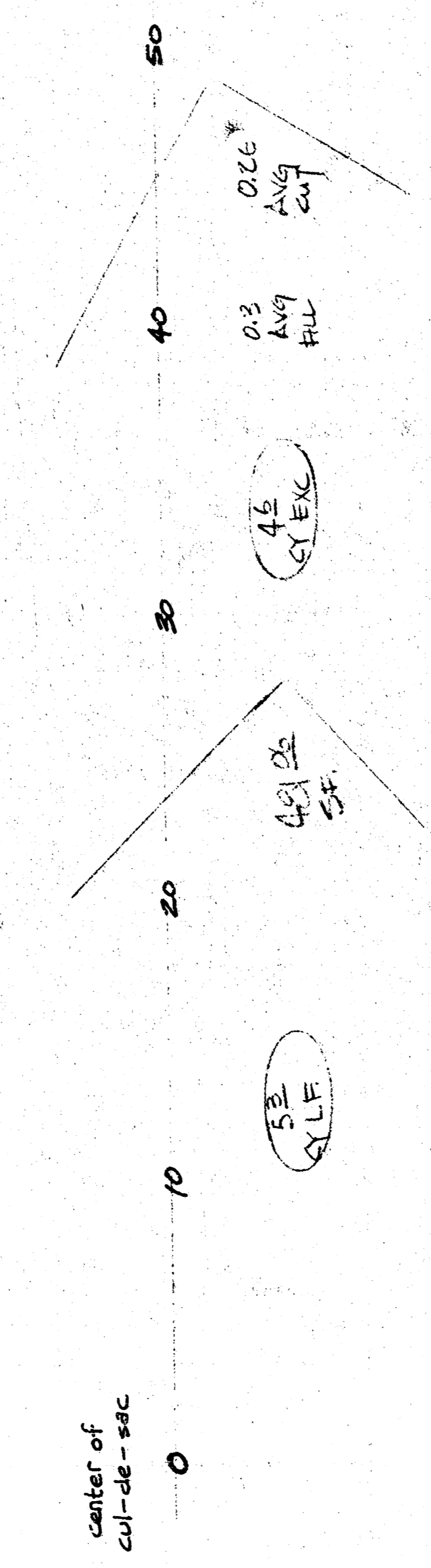
PATTIE CIRCLE 7/6
472-76-245-80837000-000-001



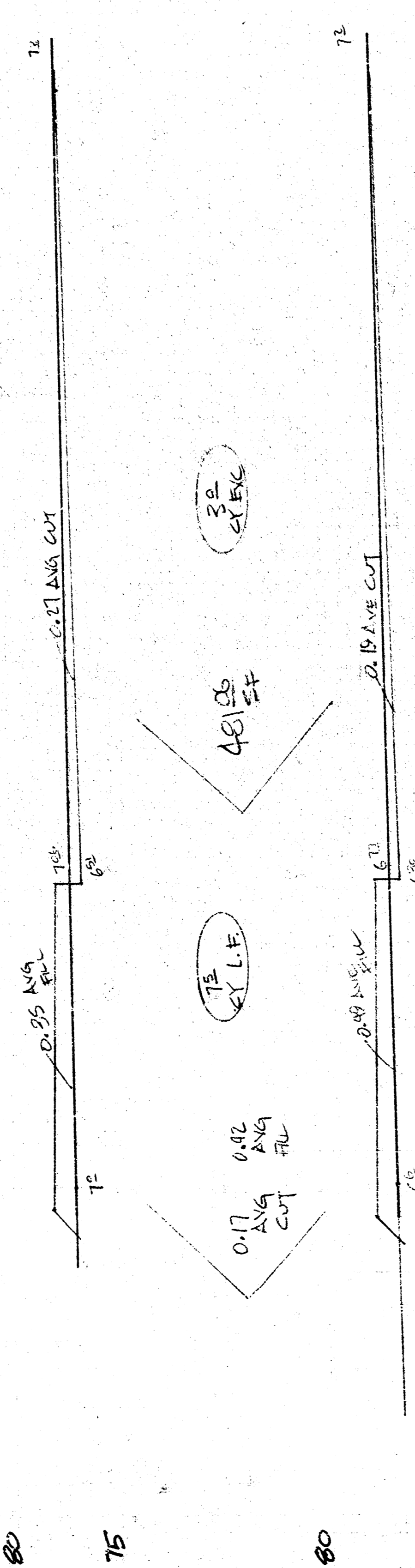
80 75 40 75 80



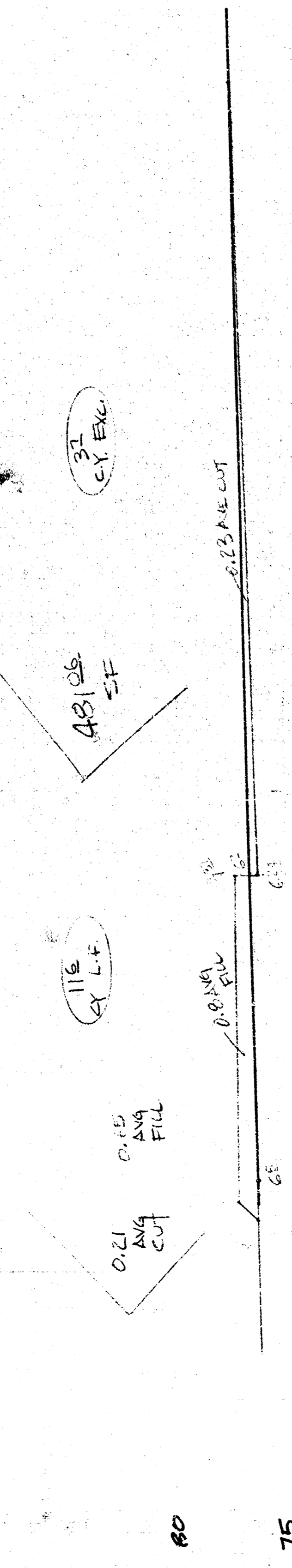
80 75 80 75 80 75



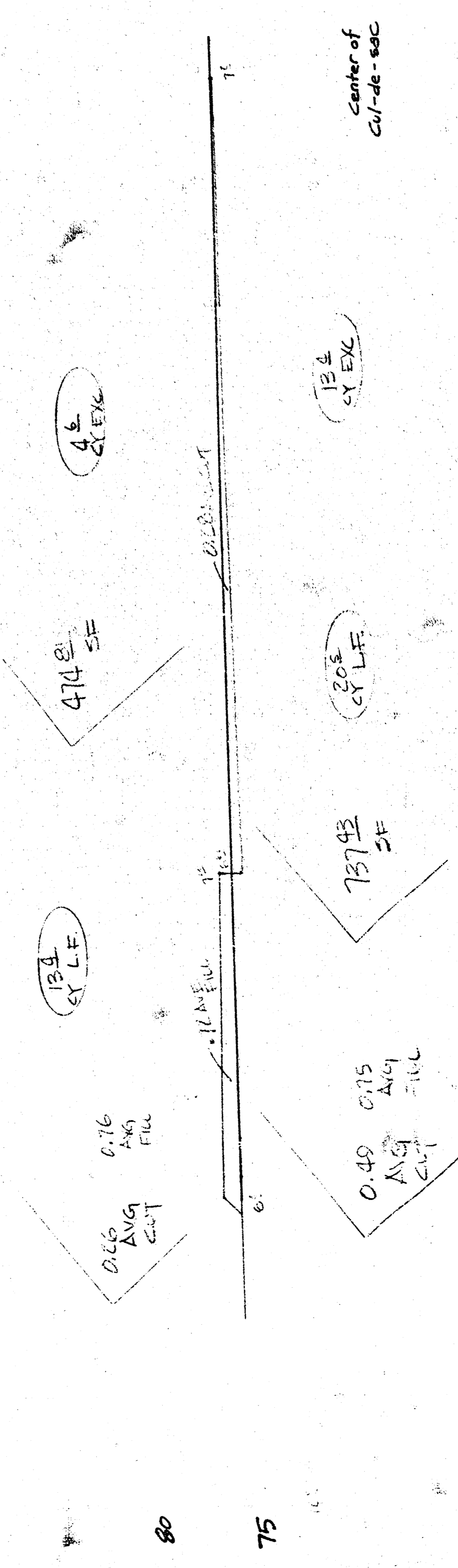
80 75 80 75 80 75



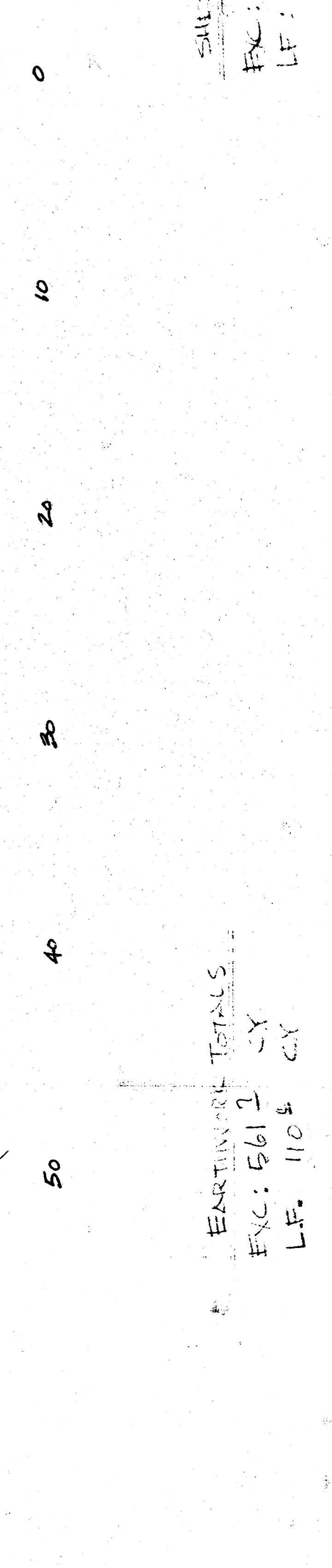
80 75 80 75 80 75



80 75 80 75 80 75



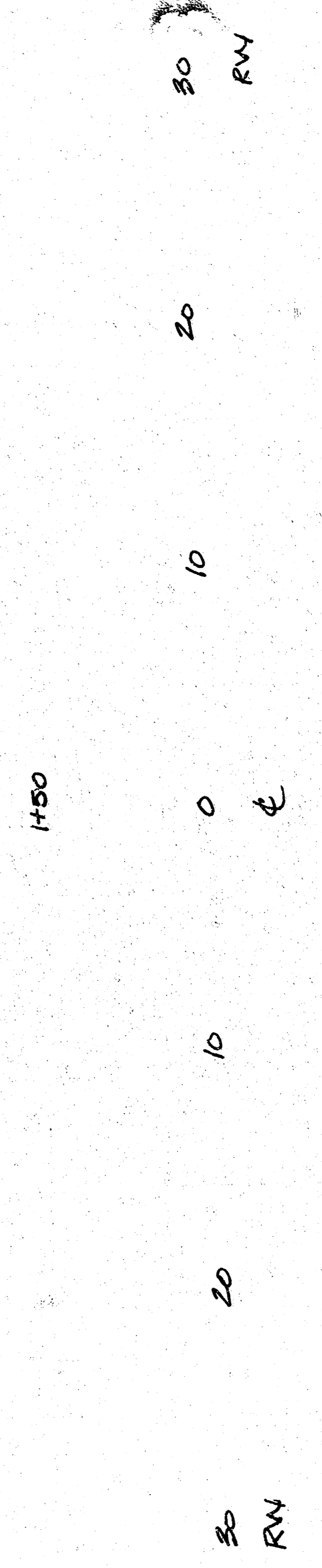
80 75 80 75 80 75



80 75 80 75 80 75

SHEET TOTALS
EXC: 1545 CY
LF: 850 CY

EARTHWORK TOTALS
EXC: 5611 CY
LF: 1104 CY



SHEET TOTALS
EX: 2675 CY
LF: 218 CY.