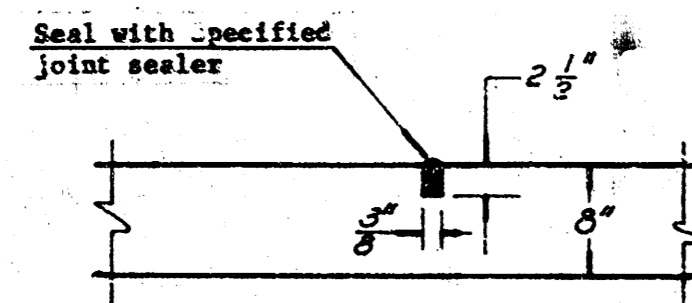


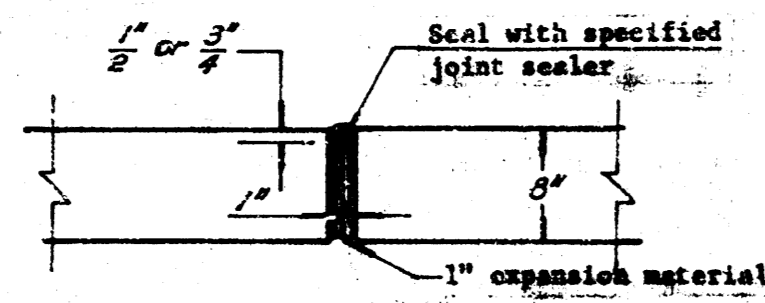
**PAWNEE AVENUE**  
240' TO 1476' E. of & BROADWAY AVE.

SAMED CONTRACTION JOINTS ARE TO BE CONSTRUCTED AT 30'-0" INTERVALS EXCEPT WHERE AN EXPANSION JOINT IS USED.

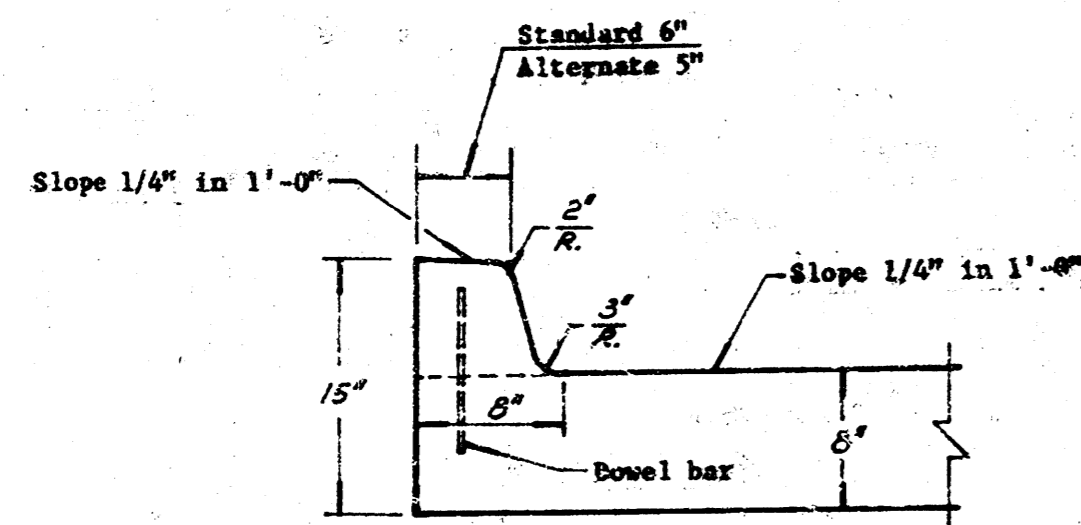


DETAIL OF SAMED CONTRACTION AND LONGITUDINAL JOINTS

EXPANSION JOINTS ARE TO BE CONSTRUCTED AT MAXIMUM INTERVALS OF 120'-0"

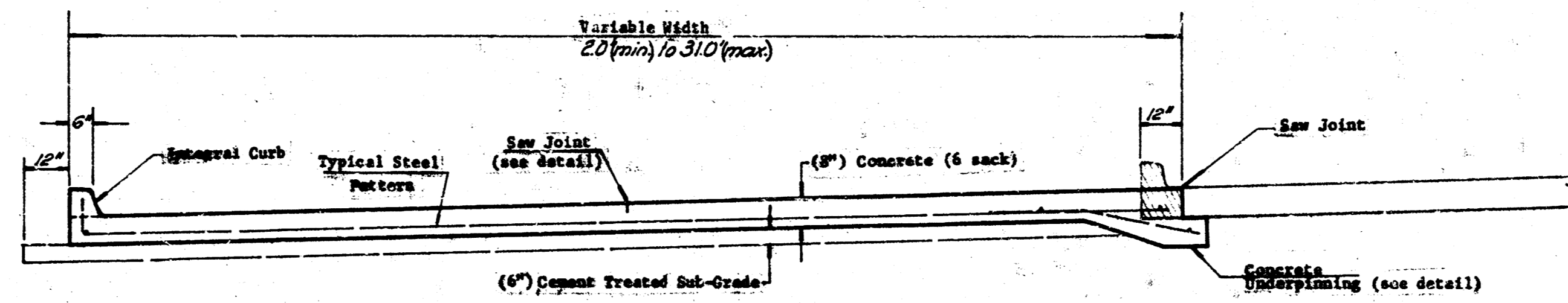


DETAIL OF EXPANSION JOINT

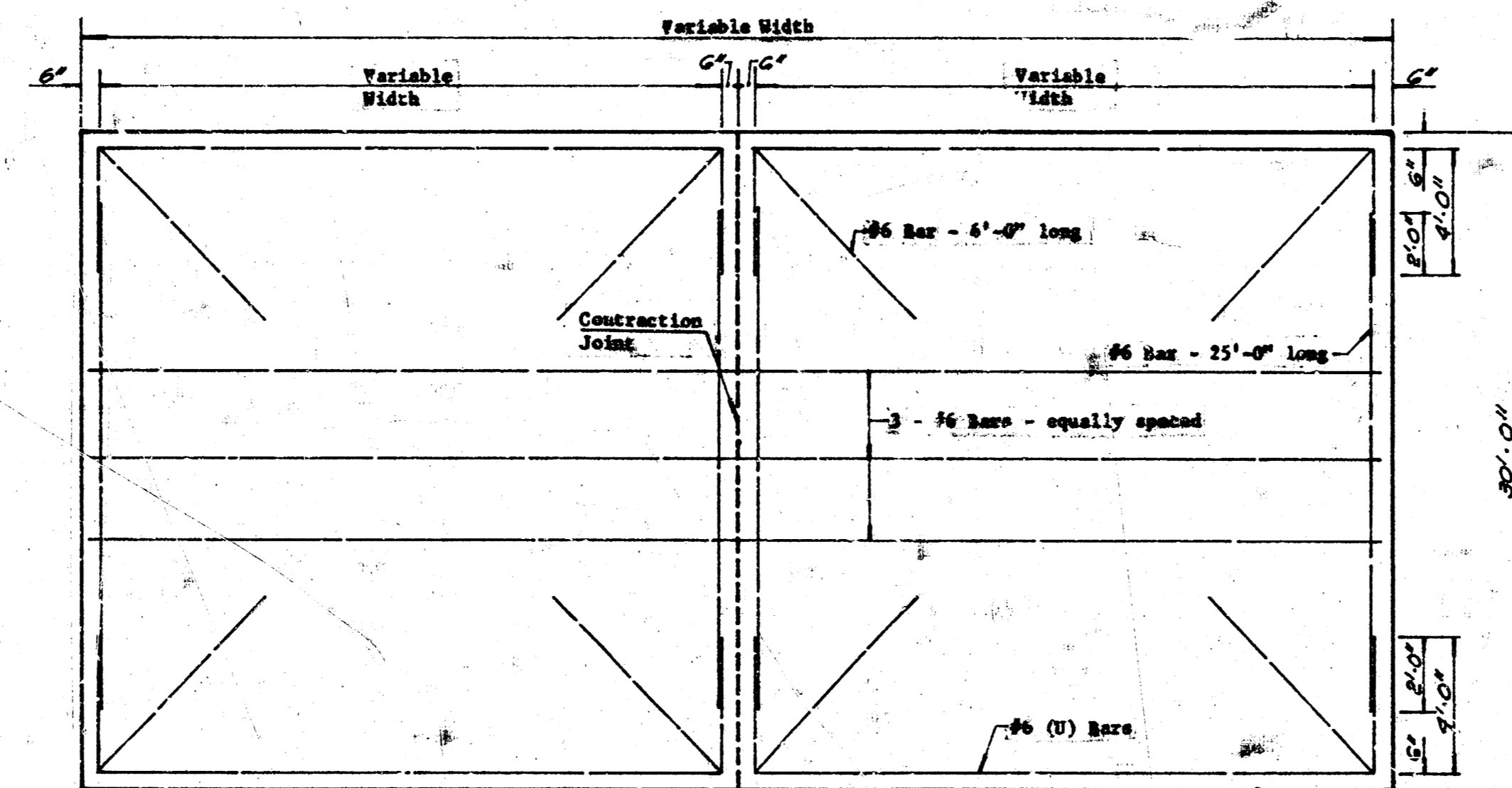


DETAIL OF INTEGRAL CURB

INTEGRAL CURB SHALL BE CUT THROUGH TO THE PAVEMENT TO UNIFORM LENGTHS OF NOT MORE THAN TEN FEET BETWEEN ADJACENT EXPANSION JOINTS. EXPANSION JOINTS HAVING THE SAME THICKNESS AS THE EXPANSION JOINTS IN THE PAVEMENT SHALL BE CONSTRUCTED IN THE INTEGRAL CURB AT THE SPECIFIED LOCATIONS. NUMBER 4 OR NUMBER 6 DOWELS SHALL BE INSTALLED IN THE INTEGRAL CURB AS SHOWN ON APPROXIMATELY 2'-0" CENTER. PAVEMENT GRADES SHOWN ON PLANS ARE FOR FINISHED GRADE.

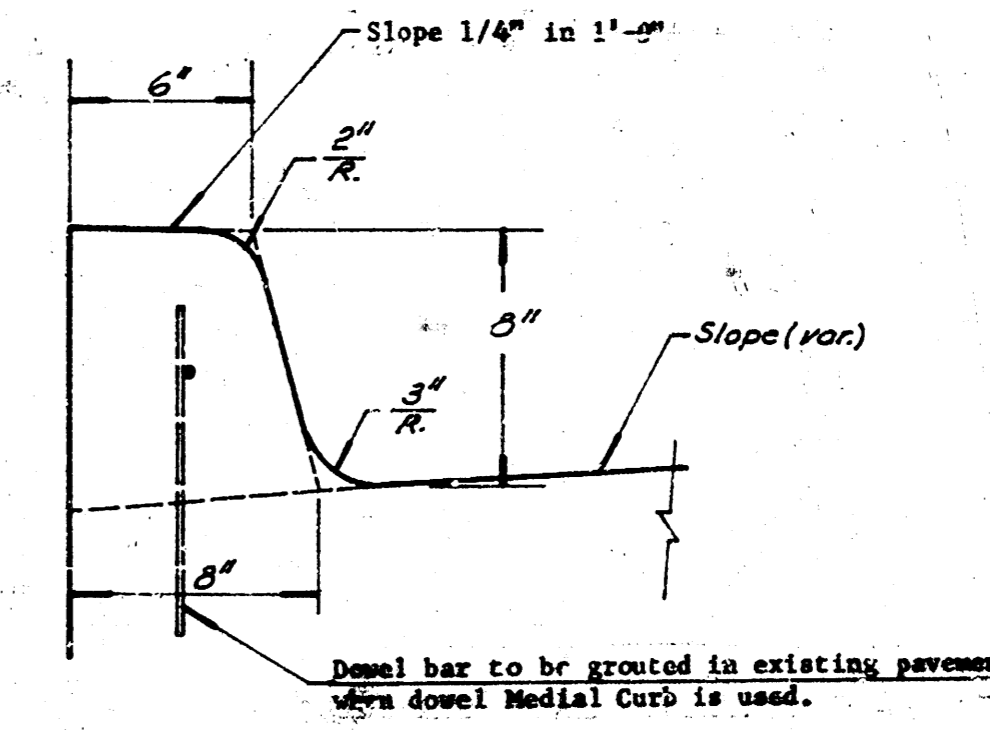


TYPICAL SECTION

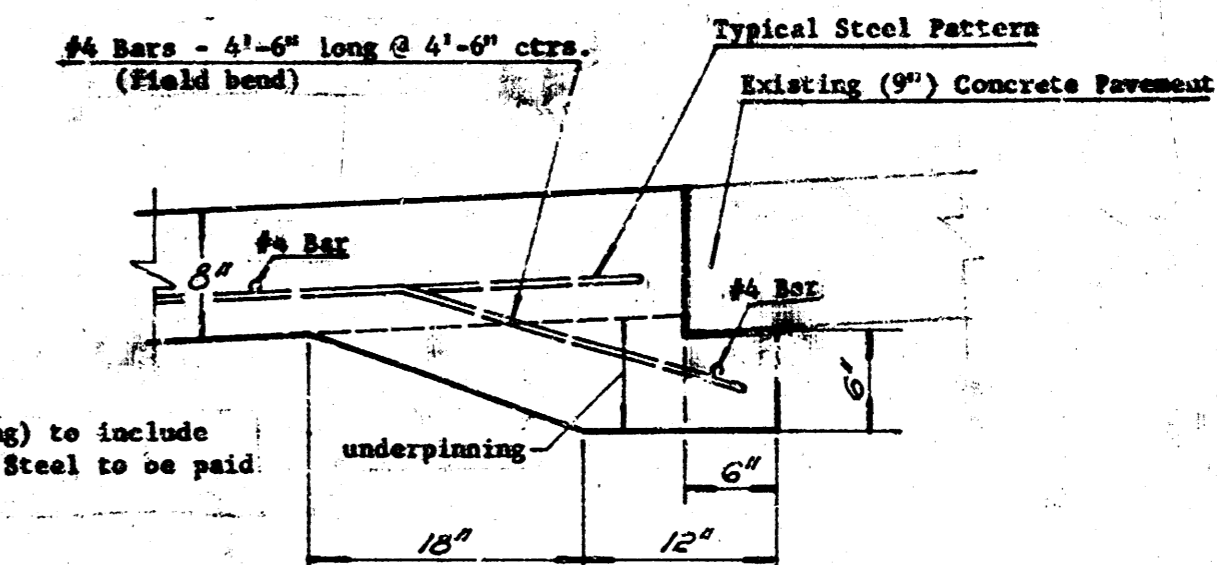


TYPICAL STEEL PATTERN

Use #6 bars thru-out unless otherwise noted.

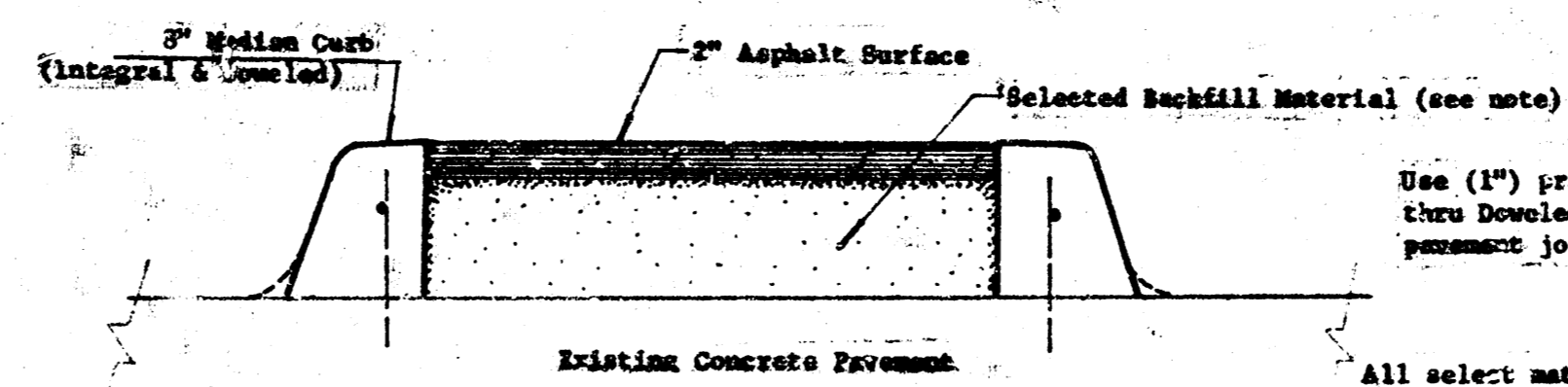


DETAIL OF 6" MEDIAN CURB (INTERNAL & DOWEL)



CONCRETE UNDERPINNING DETAIL

NOTE - Bid Item for (Lin. Ft. Underpinning) to include cost of concrete and excavation. Steel to be paid for by (lbs.) rebar, steel.



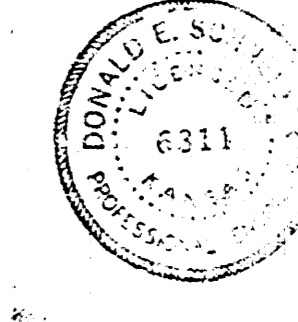
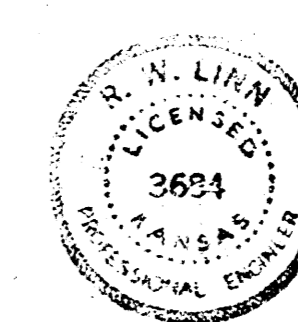
MEDIAN DETAIL

Typical Section

Use (1") pre-molded joint material thru Dowel Curb at existing permanent joints.

All select material from existing medials to be stacked piled on project and used in new medial alignments. Stock pile area to be determined in field by both the Engineer and Contractor.

NOTE - "Select Fill Material" is to consist of 80% conc. sand & 20% select soil thoroughly mix'd. This material is to be mechanically compacted in the medial to the satisfaction of Engr.



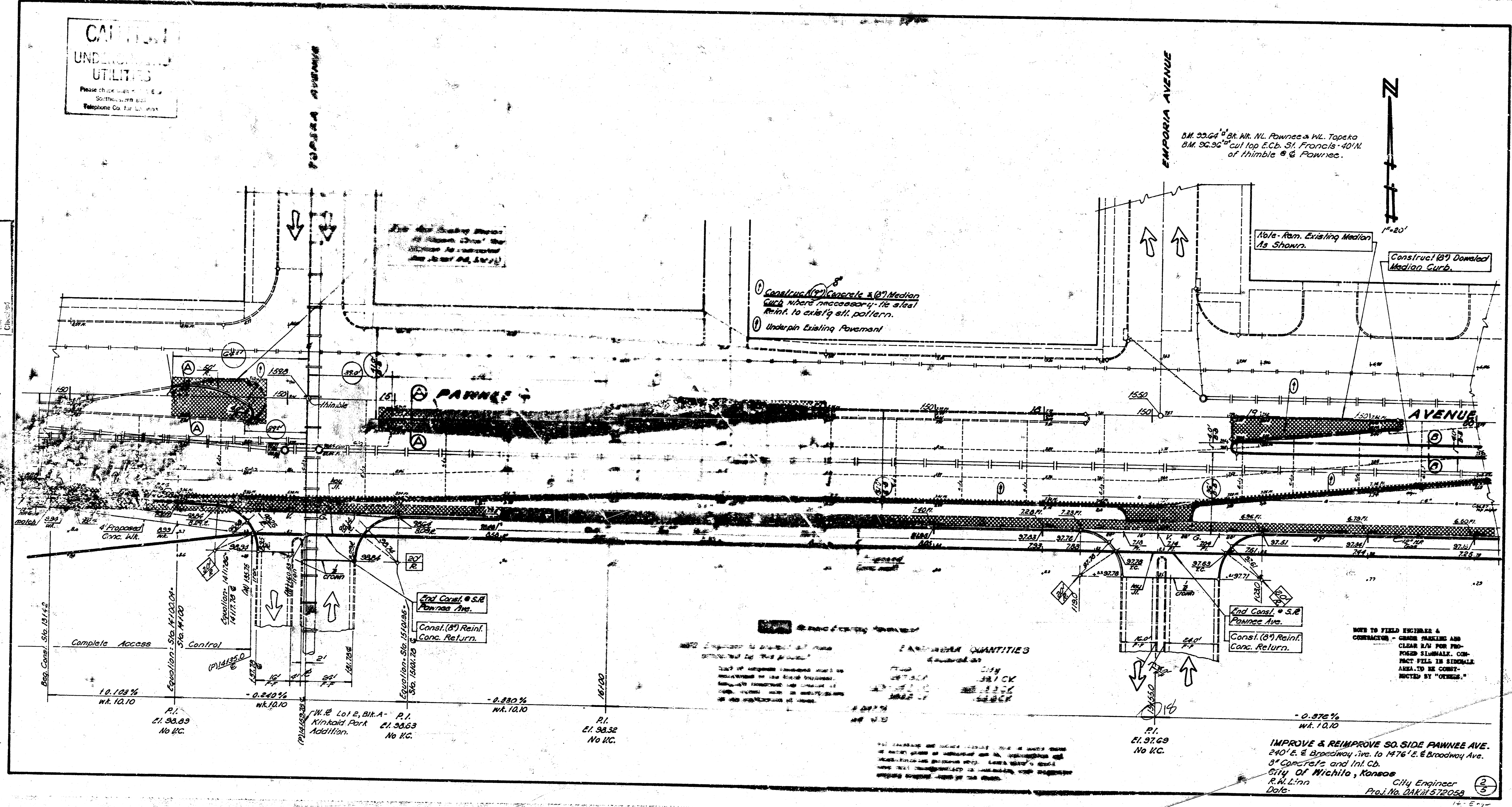
PROJ. NO. DAKM 572058  
CITY OF WICHITA, KANSAS  
R. W. LINN - CITY ENGINEER

June 1973

1/2

**CAREFUL**  
**UNDERGROUND UTILITIES**  
 Please check with the following  
 organizations for location of  
 Telephone Co. Gas, etc.

Survey  
 2009  
 1/27  
 1/27  
 1/27



See also existing storm  
 sewer lines shown  
 on sheet 10, 11 & 12

- 1) Construct (8") Concrete & (8") Median  
 Curb where necessary - to align  
 with existing pattern.
- 2) Underpin Existing Pavement

811.9564' St. Mt. N.L. Pownee & W.L. Tapeta  
 811.9564' cut top E.C. St. Francis - 40' W.  
 of Himble & Pownee.

16' - from Existing Median  
 As Shown.

Construct (8") Doweled  
 Median Curb.

Proposed  
 Conc. W.R.

Complete Access

Control

End Canal @ S.E.  
 Pownee Ave.

Const. (8") Reinf.  
 Conc. Return.

End Canal @ S.E.  
 Pownee Ave.

Const. (8") Reinf.  
 Conc. Return.

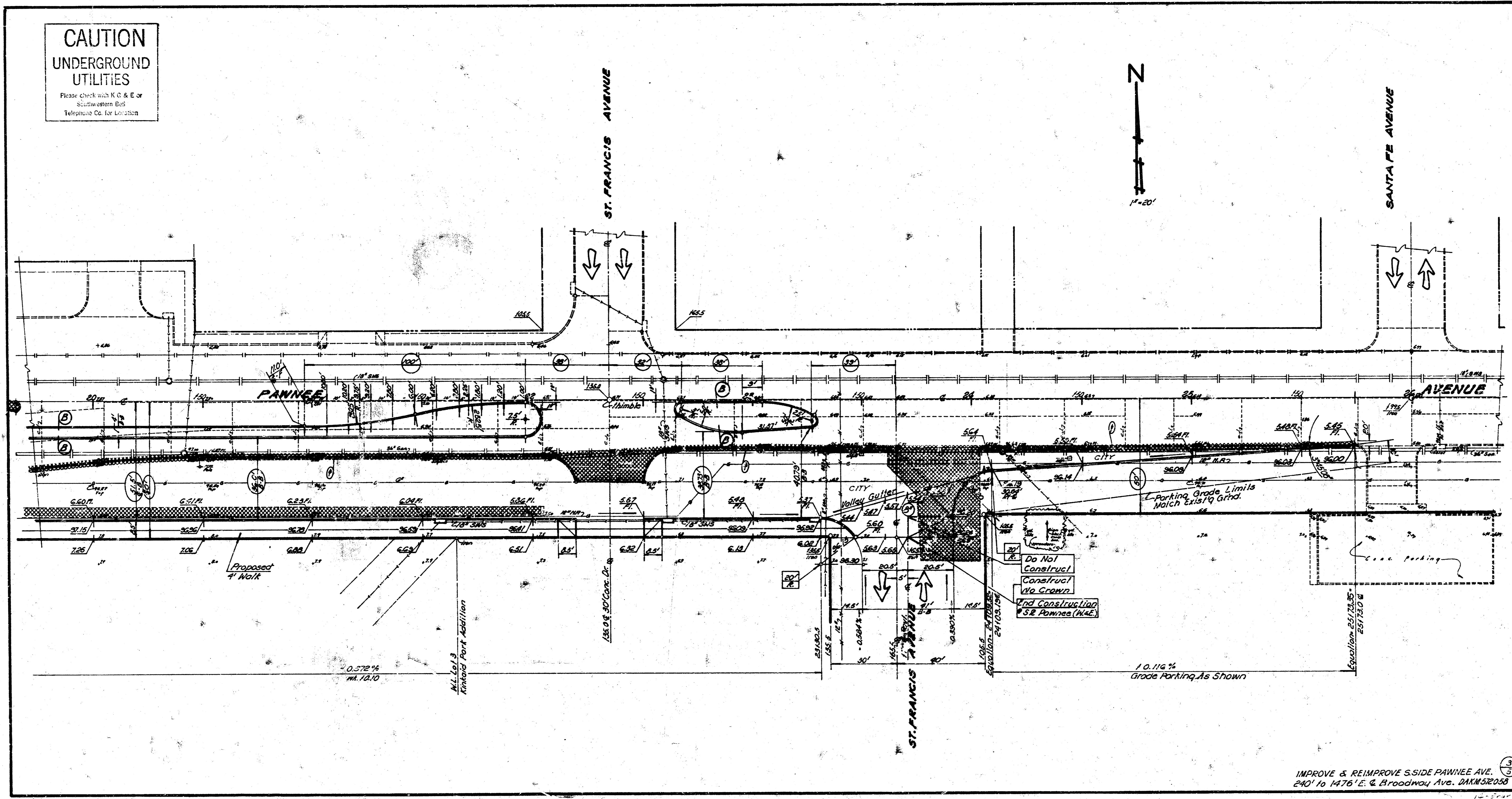
NOTE TO FIELD ENGINEER &  
 CONTRACTOR - CHECK MARKING AND  
 CLEAR 5' W. FOR PRO-  
 TECTED UTILITY. CON-  
 FLECT FILL IN SIDEWALK  
 AREA TO BE CONST-  
 RUCTED BY OTHERS.

ESTIMATED QUANTITIES

ITEM	QUANTITY	UNIT
CONCRETE	187.5	CU YD
REINFORCING	187.5	CU YD
PAVEMENT	187.5	CU YD
GRASS	187.5	CU YD
...	...	...

**IMPROVE & REIMPROVE SO. SIDE PANNEE AVE.**  
 240' E. & Broadway Ave. to 1476' E. & Broadway Ave.  
 St. Francis and Int. Ch.  
 City of Wichita, Kansas  
 R.W. Linn  
 Date: \_\_\_\_\_  
 City Engineer  
 Proj. No. 21K11 572058

**CAUTION**  
**UNDERGROUND**  
**UTILITIES**  
Please check with K C & E or  
Southwestern Bell  
Telephone Co. for location



IMPROVE & REIMPROVE S. SIDE PAWNEE AVE.  
240' to 1476' E. & Broadway Ave. DAKMS2058