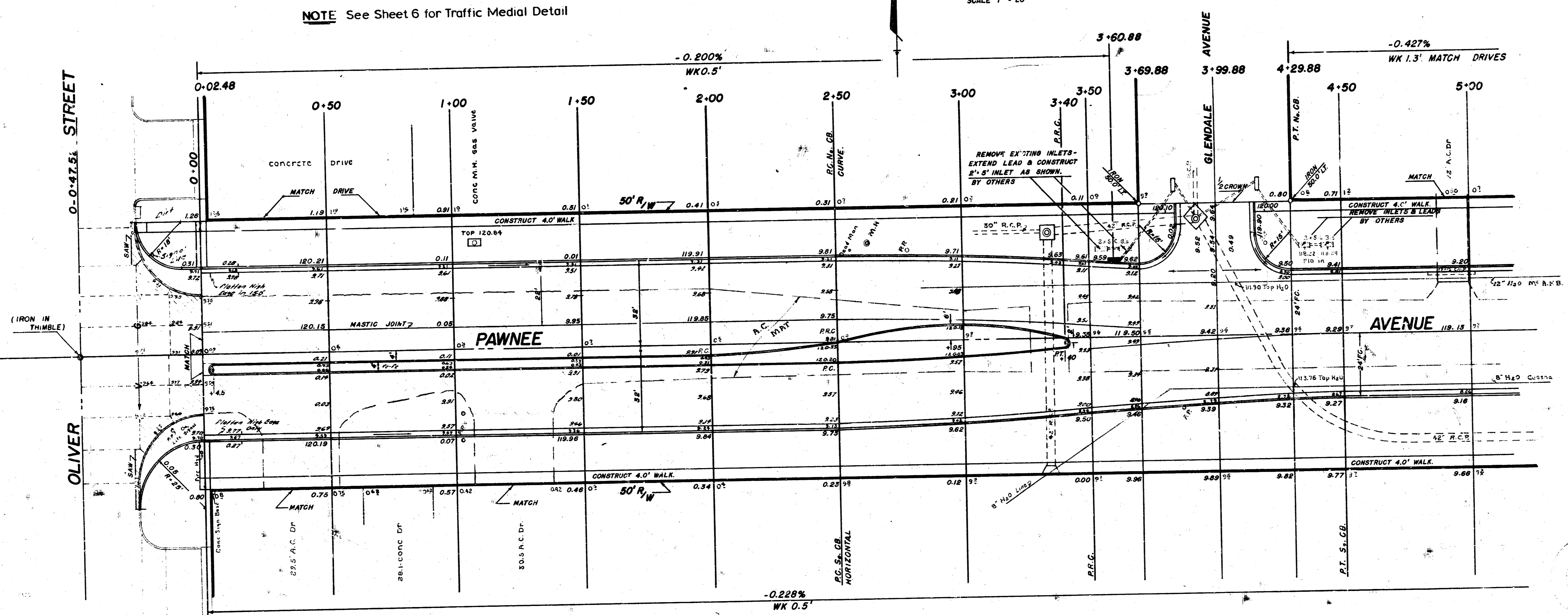


B.M. 120.46 80' SPIKE N.S. K.G.E. POLE S.E. OLIVER & PAWNEE
 B.M. 118.93 R.R. SPIKE S.S. BELL POLE N.S. PAWNEE 75' E. OF GLENDALE SO.
 B.M. 121.82 "X" CUT ON N.W. WING WALL CONC BRIDGE 120' E. OF E.L. MACADAM DR. ON PAWNEE
 B.M. 125.45 R.R. SPIKE N.S. T.R. S.S. PAWNEE 50' E. OF K.T.A. BRIDGE

NOTE See Sheet 6 for Traffic Medial Detail

SCALE 1" = 20'



NOTE REMOVE EXISTING PAVEMENT & CURB AT INTERSECTION AS SHOWN. REPLACE WITH 8" CONC AND INTEGRAL CURB.

NOTE Field Engineer to re-cross section after removal of A.C. Mat and Vegetation. Prior to beginning compacted fill.

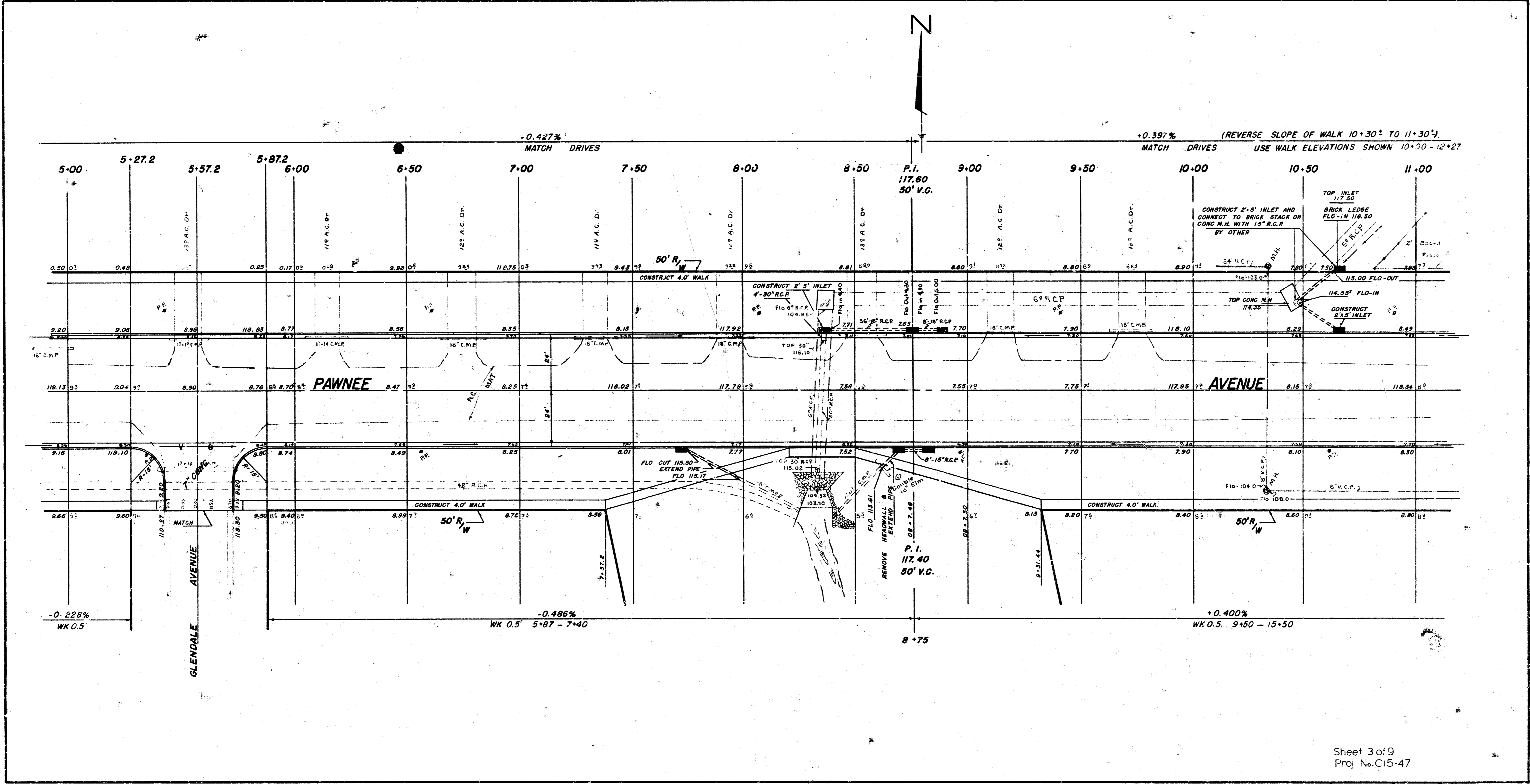
Excavation		Comp Fill	
1,792.70	CU YDS	2,304.2	CU YDS
800.00	" BORROW	10% 230.4	"
2,592.70	"	TOTAL 2,534.7	CU YDS
10% 259.27	"		
TOTAL 2,851.97	CU YDS		

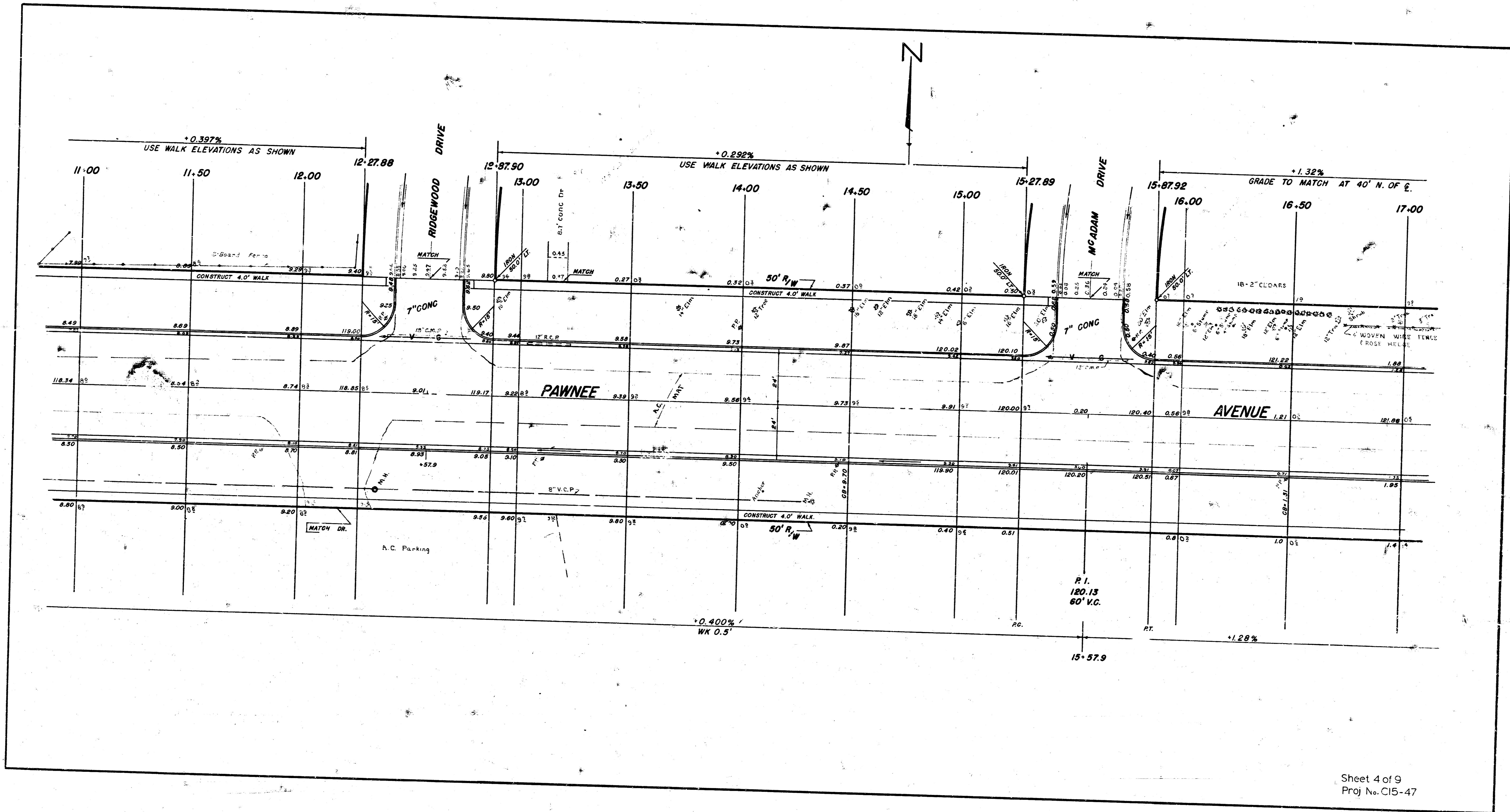
BORROW MATERIAL NECESSARY TO MAKE THE COMPACTED FILL WILL BE PAID AS CUBIC YARDS OF EXCAVATION. THE MATERIAL WILL BE OBTAINED FROM THE DRAINAGE EASEMENT ON THE SOUTH SIDE OF PAWNEE AT STATION 17+50.

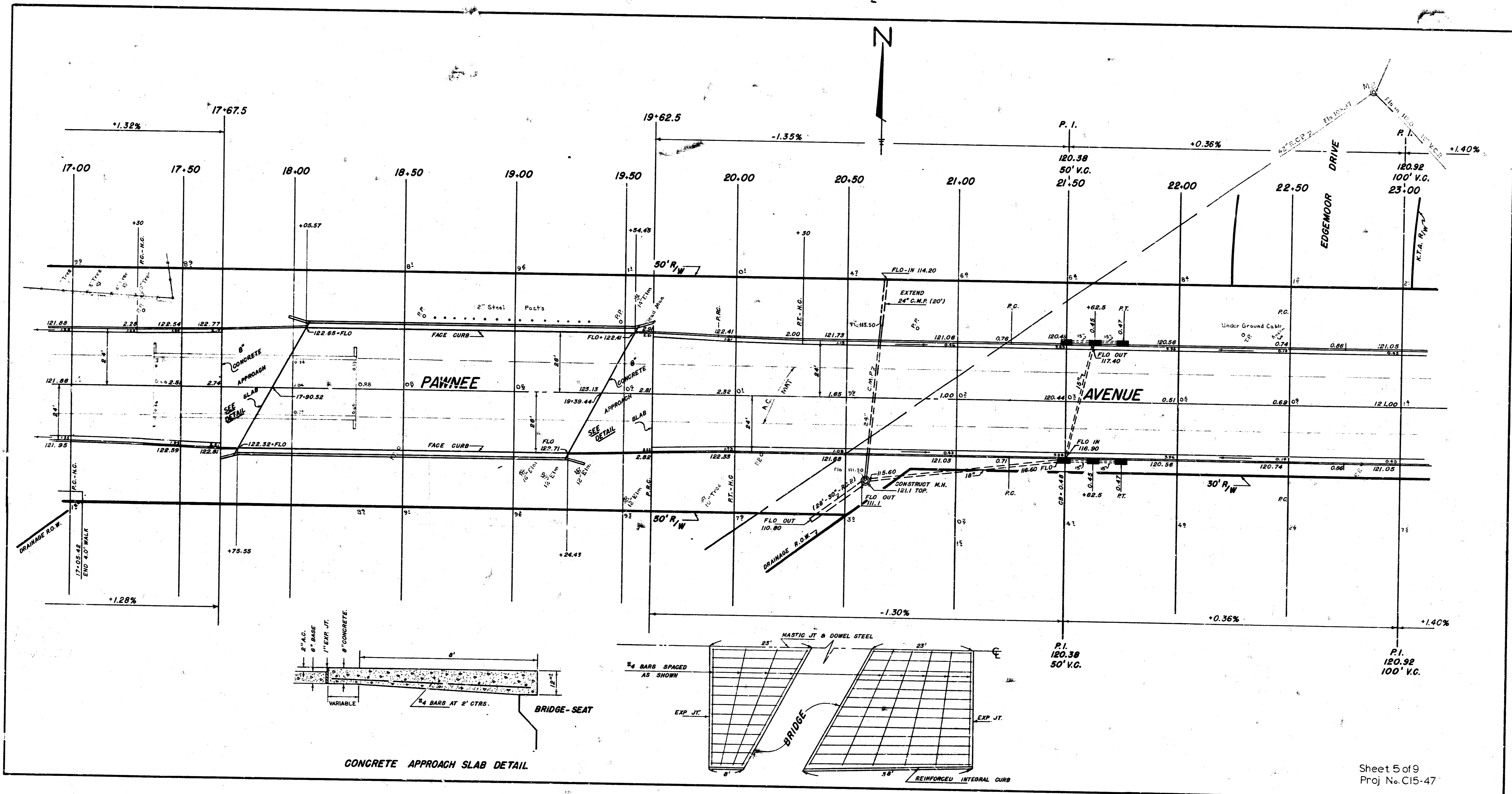
NOTE ASPHALT MAT HAS BEEN DEDUCTED FROM THE EXCAVATION QUANTITIES

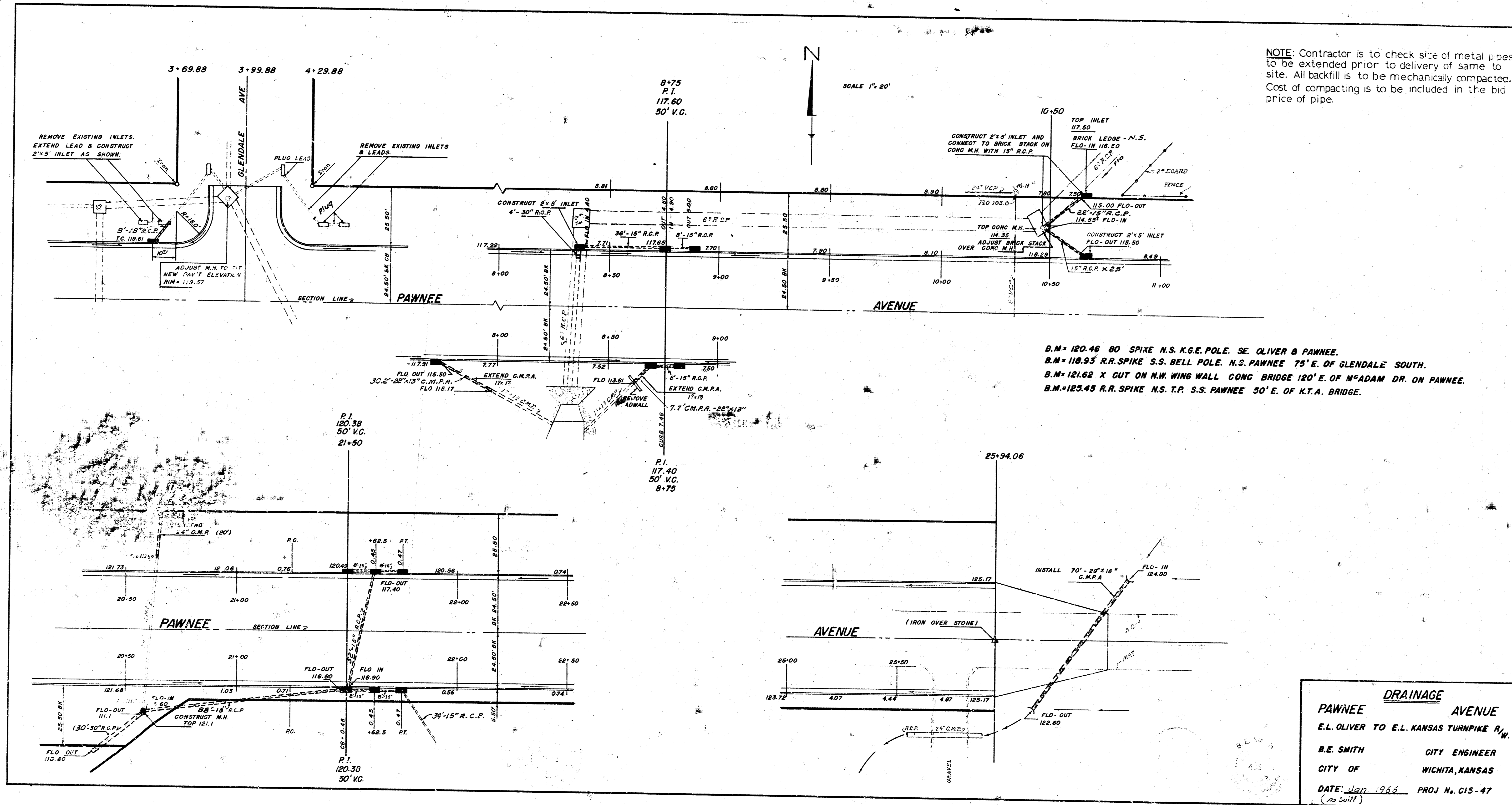
PAWNEE AVENUE
 E.L. OLIVER TO E.L. KANSAS TURNPIKE R.O.W.
 44'-2'-48" — ASPH-CONC.
 B.E. SMITH CITY ENGINEER
 CITY OF WICHITA, KANSAS
 DATE: Jan. 1966 PROJ. No. C15-47

City of Youngstown
Public Works
Engineering





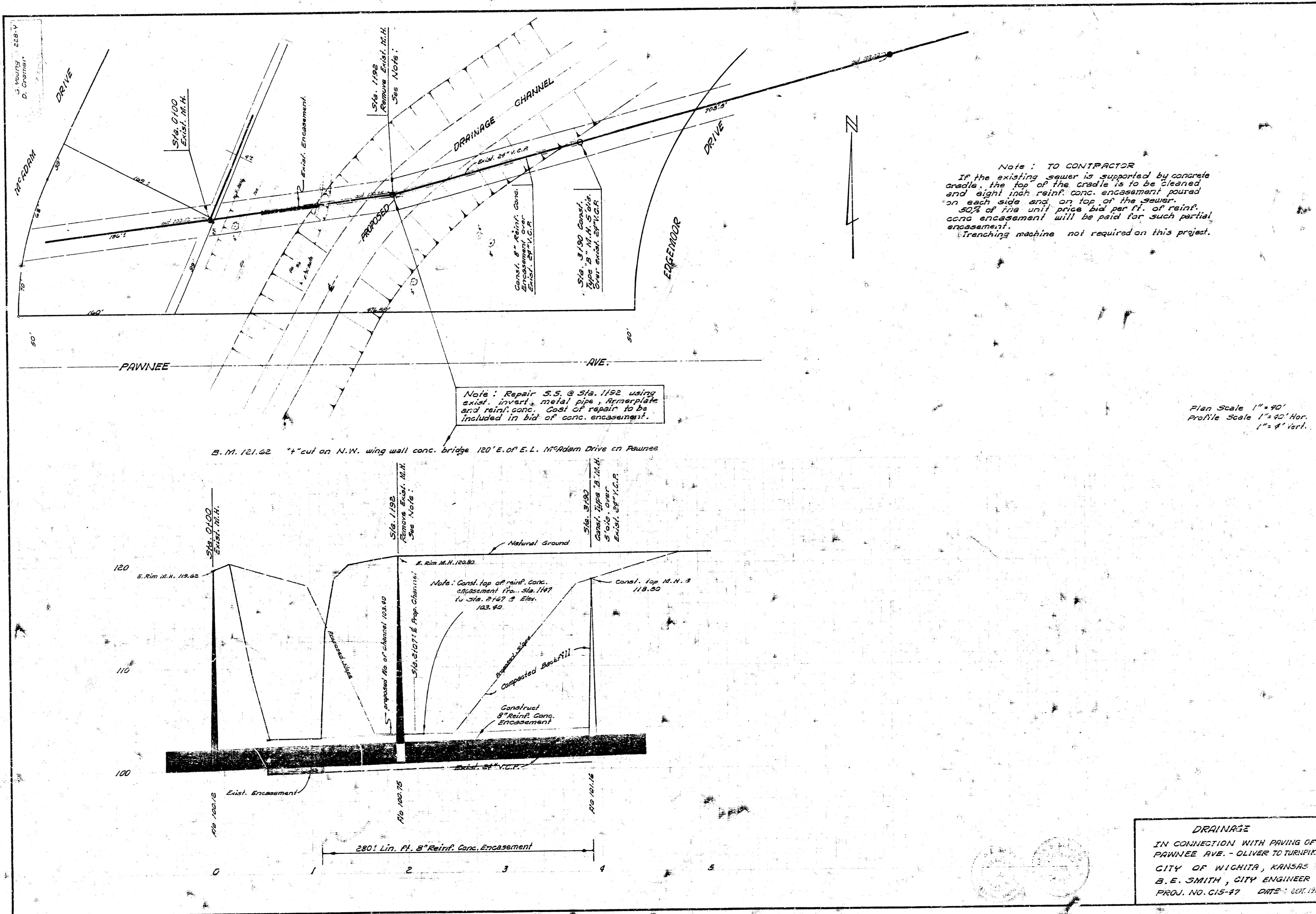




NOTE: Contractor is to check size of metal pipes to be extended prior to delivery of same to site. All backfill is to be mechanically compacted. Cost of compacting is to be included in the bid price of pipe.

B.M. = 120.46 80 SPIKE N.S. K.G.E. POLE. SE. OLIVER & PAWNEE.
 B.M. = 118.93 R.R. SPIKE S.S. BELL POLE. N.S. PAWNEE 75' E. OF GLENDALE SOUTH.
 B.M. = 121.62 X CUT ON N.W. WING WALL CONG. BRIDGE 120' E. OF M'ADAM DR. ON PAWNEE.
 B.M. = 123.45 R.R. SPIKE N.S. T.P. S.S. PAWNEE 50' E. OF K.T.A. BRIDGE.

DRAINAGE
PAWNEE AVENUE
 E.L. OLIVER TO E.L. KANSAS TURNPIKE R/W.
 B.E. SMITH CITY ENGINEER
 CITY OF WICHITA, KANSAS
 DATE: Jan. 1966 PROJ. No. G15-47
 (no suit)



Note: TO CONTRACTOR
 If the existing sewer is supported by concrete cradle, the top of the cradle is to be cleaned and eight inch reinf. conc. encasement poured on each side and on top of the sewer. 50% of the unit price bid per ft. of reinf. conc. encasement will be paid for such partial encasement.
 Trenching machine not required on this project.

Note: Repair S.S. @ Sta. 1192 using exist. invert, metal pipe, Apronplate and reinf. conc. Cost of repair to be included in bid of conc. encasement.

Plan Scale 1" = 90'
 Profile Scale 1" = 42' Hor.
 1" = 4' Vert.

B. M. 121.62 1/2" cut on N.W. wing wall conc. bridge 120' E. of E.L. N. Adams Drive on Pawnee

DRAINAGE
 IN CONNECTION WITH PAVING OF
 PAWNEE AVE. - OLIVER TO TURNPIKE
 CITY OF WICHITA, KANSAS
 B. E. SMITH, CITY ENGINEER
 PROJ. NO. C15-47 DATE: SEPT. 1945