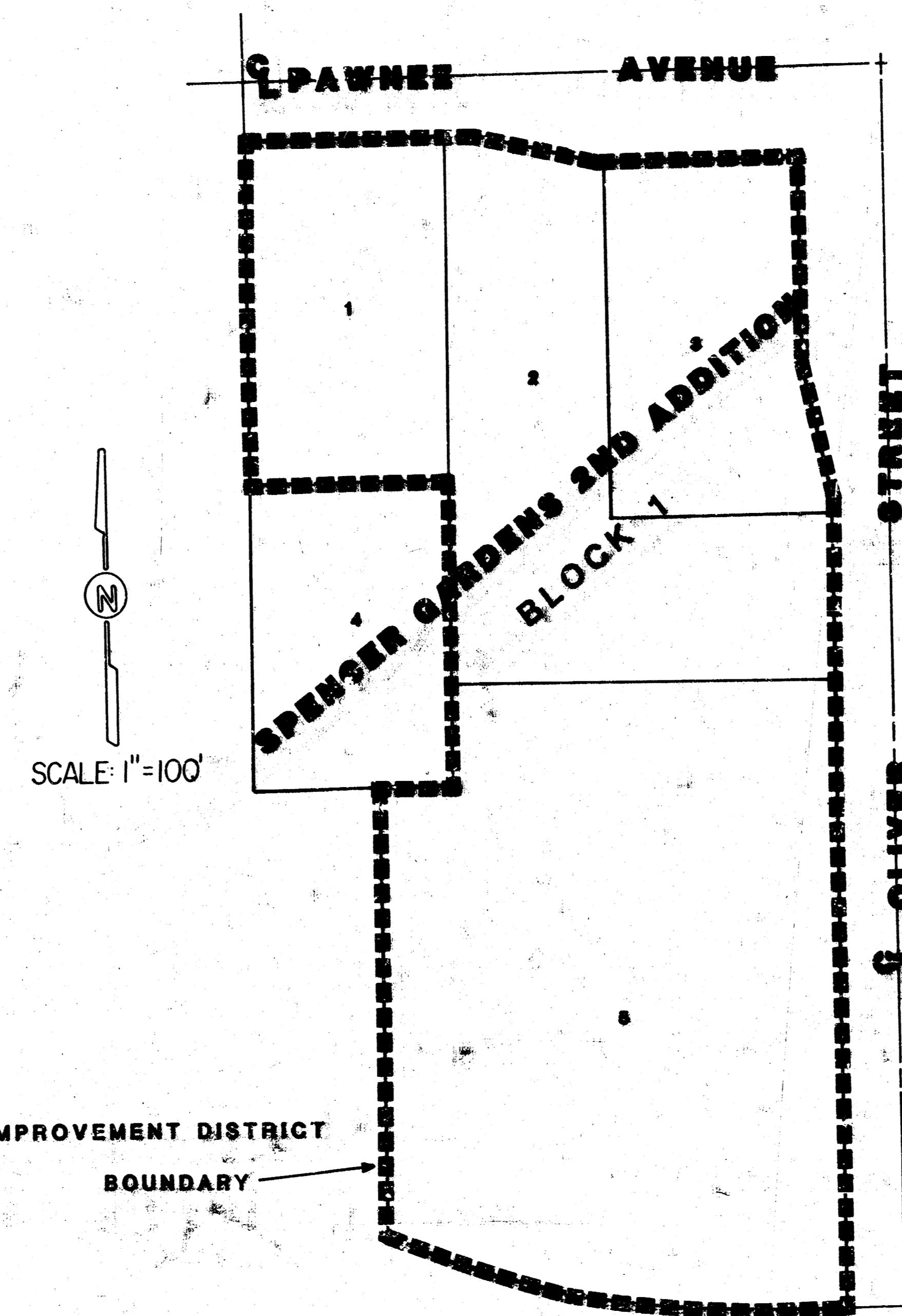


**CONSTRUCTION PLANS**  
**RECONSTRUCTED MEDIAL IMPROVEMENTS ON PAWNEE**  
**TO SERVE**  
**SPENCER GARDENS 2ND ADDITION**  
**THE CITY OF WICHITA, KANSAS**

MICHAEL E. LINDEBAK, P.E.-CITY ENGINEER

**GENERAL NOTES**

1. Replace the medial filler asphalt from the top of the undisturbed earth subgrade or from the top of the 6" concrete base pavement. (2" min. thickness)
2. The 6" concrete base pavement shall extend a minimum of 12" behind the curb.
3. The proposed 2" asphalt overlay shall be installed on all new concrete base pavement and replaced where removed from the existing concrete base.
4. Medial filler asphalt shall be installed with a 2% slope from median curbs to drain.
5. Pavement shall slope away from median curbs and shall match existing cross slopes.
6. Traffic shall remain open during construction.



**BENCH MARKS**

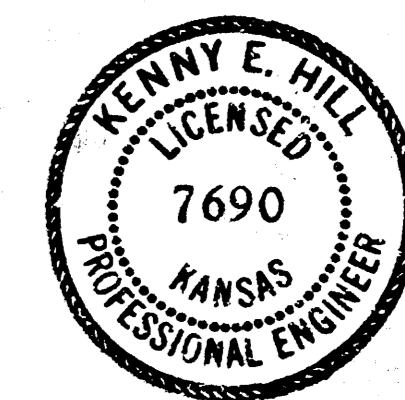
- (City of Wichita Datum)
1. City of Wichita Std. Disc. 52" N. and 42" E. of C. Oliver and Pawnee. Elev. 121.146

**PROJECT NO. 472-76-245-81806-000-000-001**

**INDEX #607309**

**DECEMBER 1988**

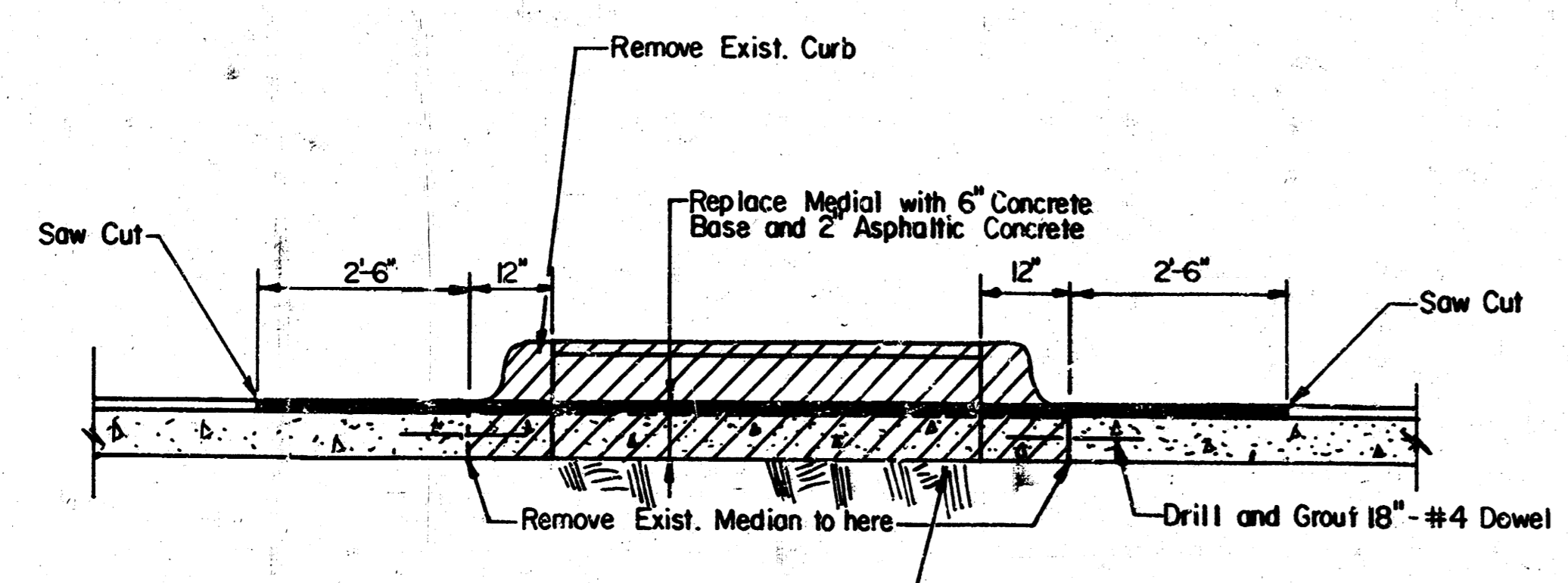
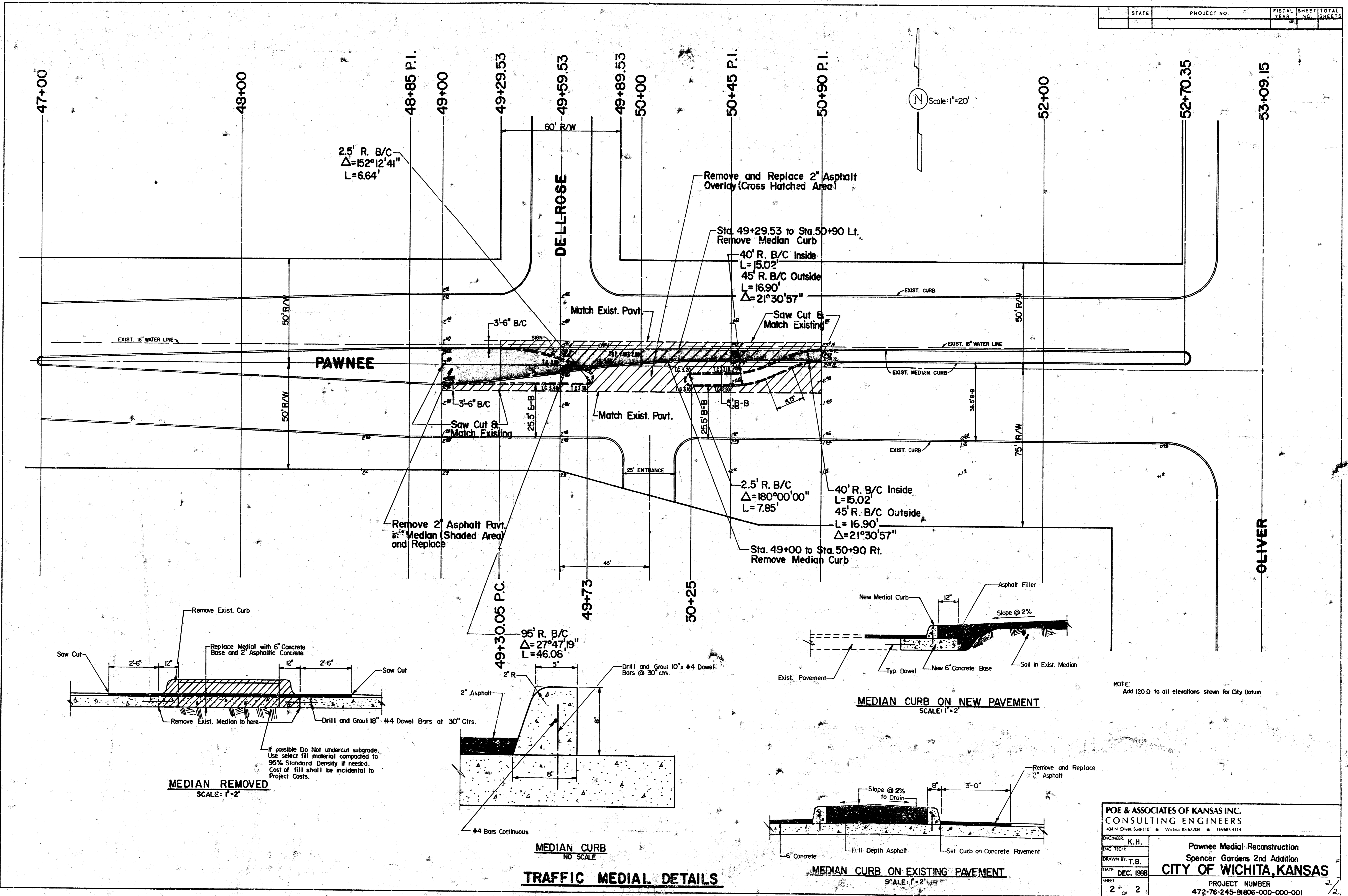
PLANS PREPARED BY  
 POE & ASSOCIATES OF KANSAS INC.  
 CONSULTING ENGINEERS  
434 N. Oliver, Suite 110 ■ Wichita, KS 67208 ■ 316/665-4114



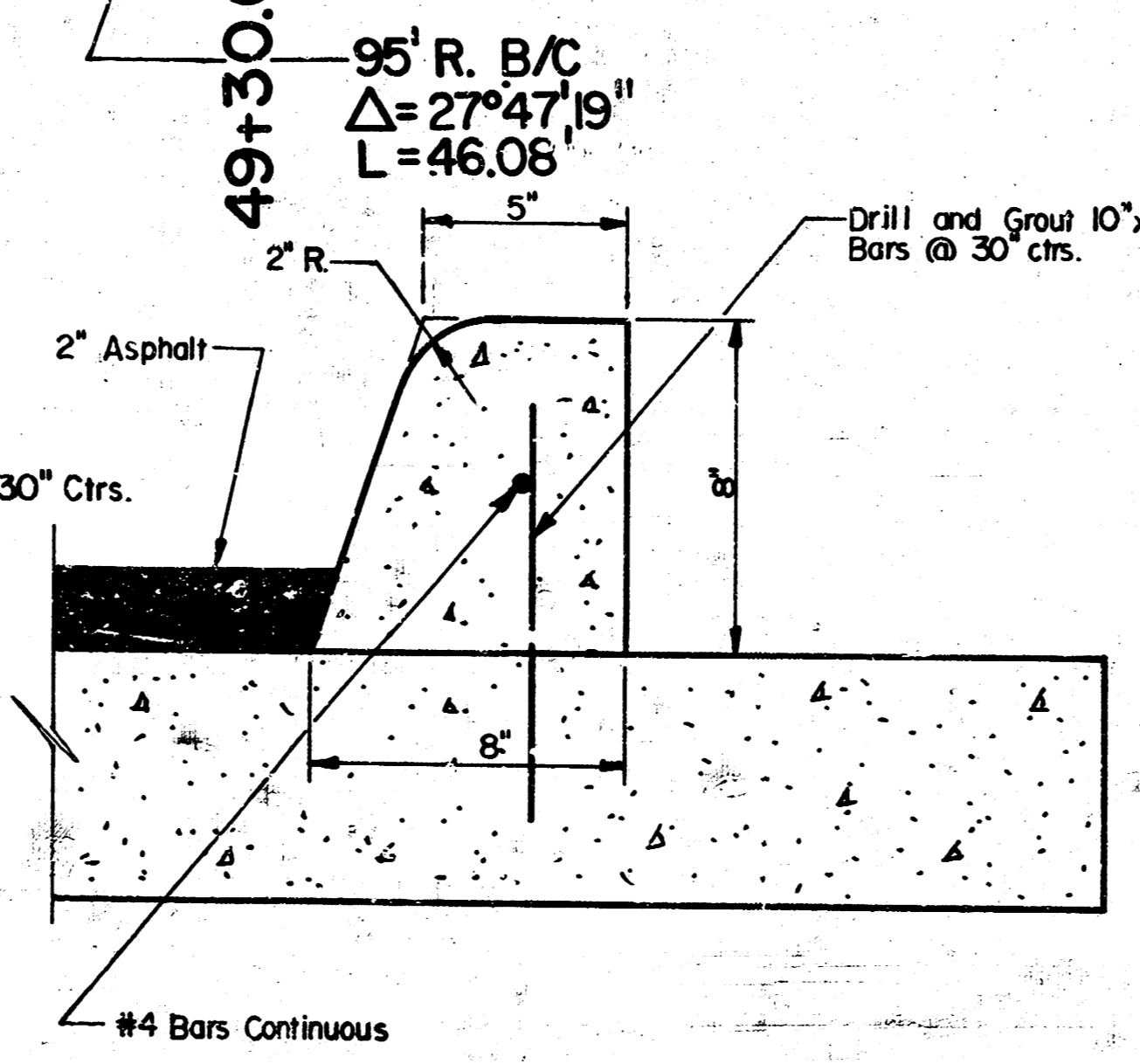
|       |             |             |           |              |
|-------|-------------|-------------|-----------|--------------|
| STATE | PROJECT NO. | FISCAL YEAR | SHEET NO. | TOTAL SHEETS |
|-------|-------------|-------------|-----------|--------------|

|           |                    |    |      |
|-----------|--------------------|----|------|
| PLAN      | SURVEYED           | BY | DATE |
| NOTE BOOK | ADJUSTED           |    |      |
|           | RT. OF WAY CHECKED |    |      |
|           | PT. OF WAY CHECKED |    |      |

|           |                             |    |      |
|-----------|-----------------------------|----|------|
| PROFILE   | SURVEYED                    | BY | DATE |
| NOTE BOOK | GRADES CHECKED              |    |      |
|           | B.M. NOTED                  |    |      |
|           | STRUCTURE NOTATIONS CHECKED |    |      |

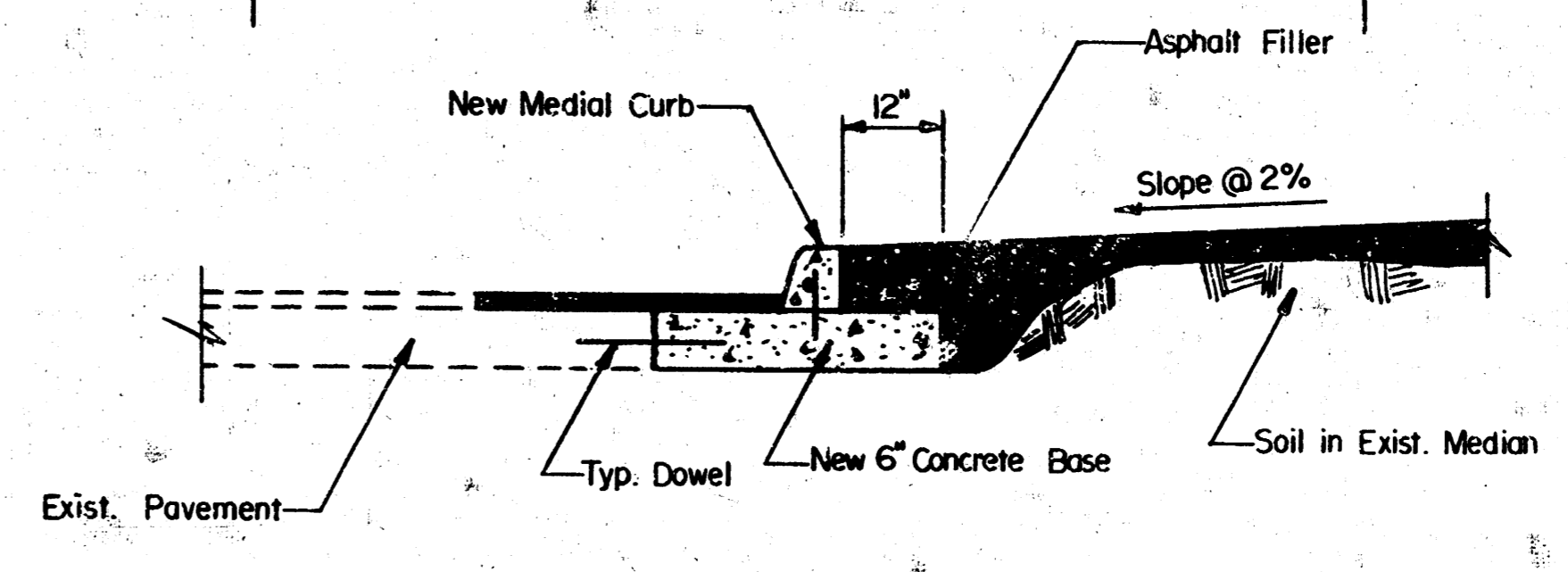


**MEDIAN REMOVED**  
SCALE: 1"=2'

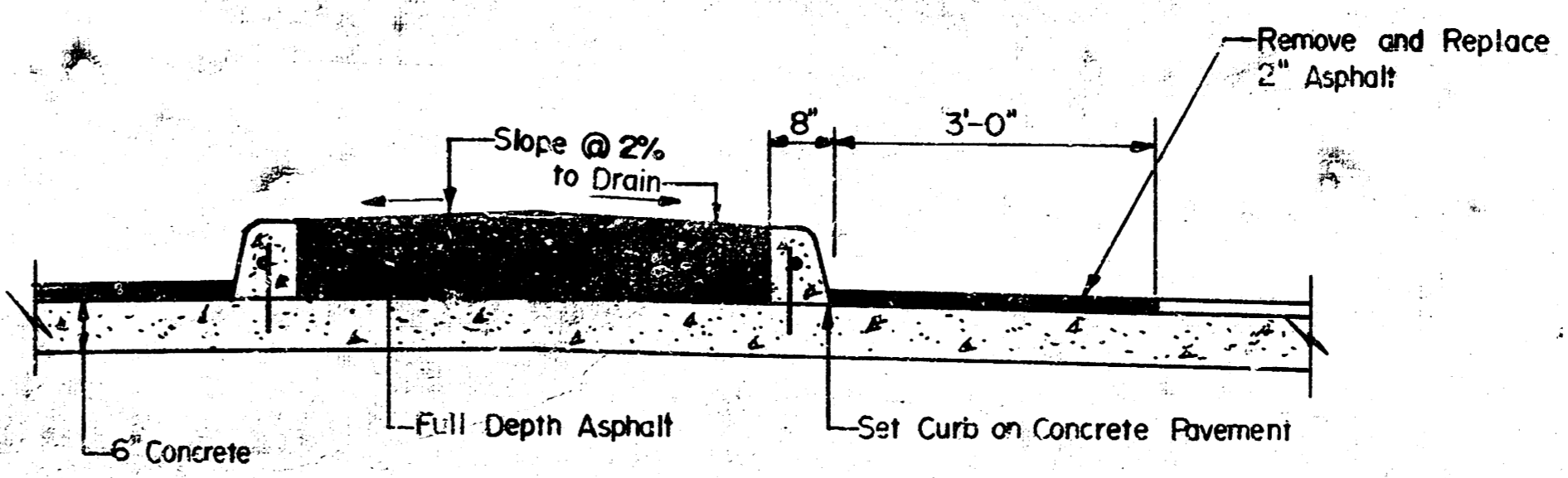


**MEDIAN CURB**  
NO SCALE

**TRAFFIC MEDIAL DETAILS**



**MEDIAN CURB ON NEW PAVEMENT**  
SCALE: 1"=2'



**MEDIAN CURB ON EXISTING PAVEMENT**  
SCALE: 1"=2'

NOTE:  
Add 120.0 to all elevations shown for City Datum.

**POE & ASSOCIATES OF KANSAS INC.**  
CONSULTING ENGINEERS  
434 N. Oliver, Suite 110 • Wichita, KS 67208 • 316/855-4114

ENGINEER: K.H.  
ENGR. TECH: T.B.  
DRAWN BY: T.B.  
DATE: DEC. 1998

**Pawnee Medial Reconstruction**  
Spencer Gardens 2nd Addition  
**CITY OF WICHITA, KANSAS**

PROJECT NUMBER: 472-76-245-B1806-000-000-001  
SHEET: 2 of 2