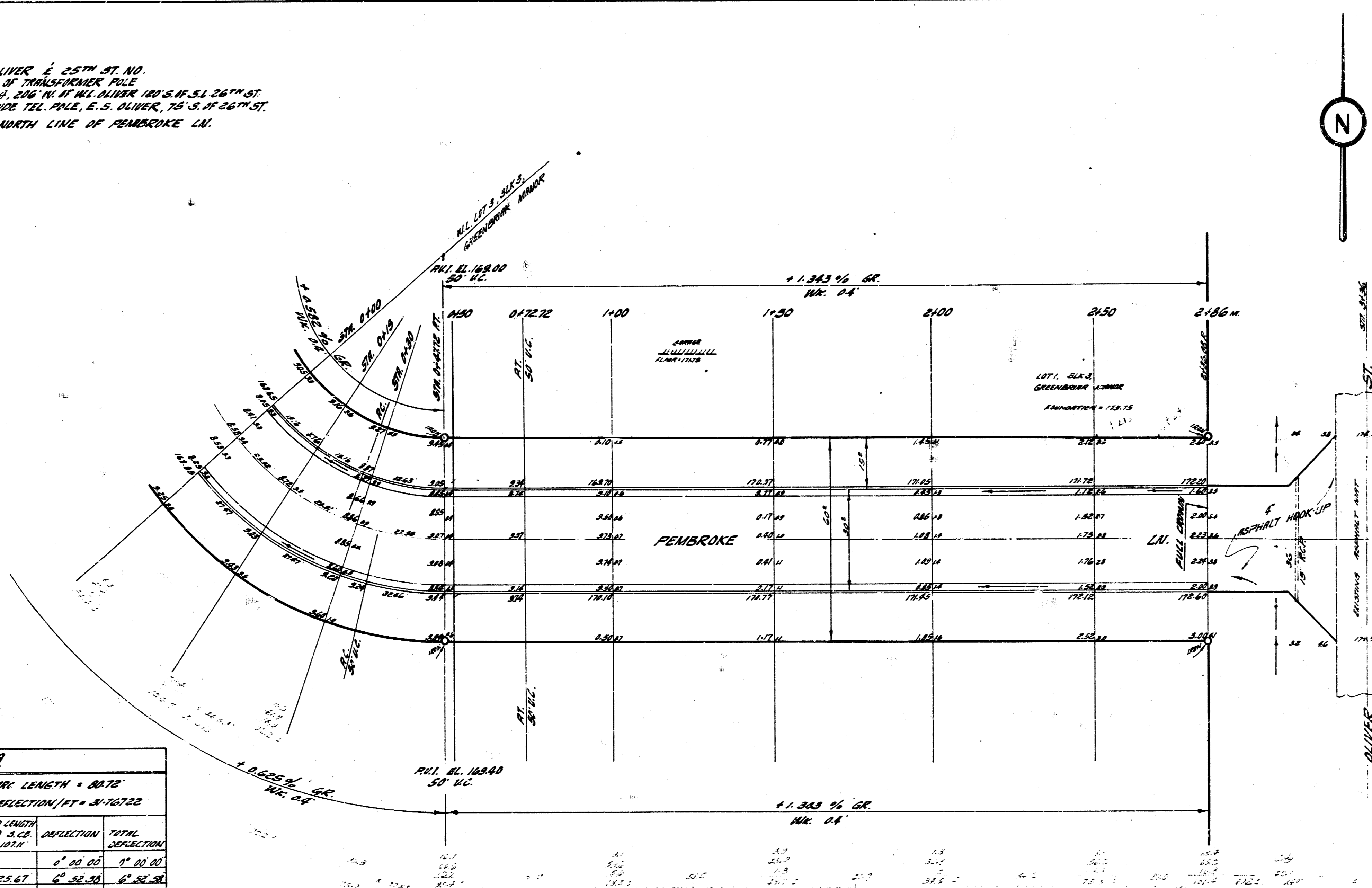


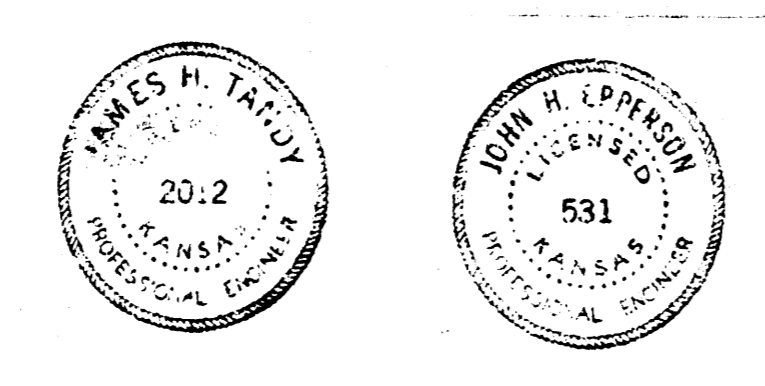
B.M. 17823 STD. 5/4" I.I.S. OLIVER E. 25TH ST. NO.  
 B.M. 16883 DOUBLE SPIKE S.S. OF TRANSFORMER POLE  
 LOTS 2-4-6 1/4" S. 1/4" N. W. 1/4" OLIVER 100 S.W. 1/4" 26TH ST.  
 B.M. 16847 STEEL PIN 1/4" I.I.S. 1/2" DIA. E. S. OLIVER, 75 S. OF 26TH ST.  
 STATIONING & BASELINE ALONG NORTH LINE OF PEMBROKE LN.

Checked by  
 Drawn by  
 Etc. and  
 Checked by



Scale 1"=80'

CURVE DATA					
BASED ON N.E.					
R = 54.11'		ARC LENGTH = 88.78'			
Δ = 85°28'30"		DEFLECTION/FT = 3.76732			
STATION	ARC LENGTH	CHORD LENGTH	CHORD BEARING	DEFLECTION	TOTAL DEFLECTION
STATION	ARC LENGTH	CHORD LENGTH	CHORD BEARING	DEFLECTION	TOTAL DEFLECTION
1+00	18.65	22.67	8° 00' 00"	0° 00' 00"	0° 00' 00"
1+10	18.65	22.67	8° 00' 00"	8° 00' 00"	8° 00' 00"
1+20	18.65	22.67	8° 00' 00"	16° 00' 00"	16° 00' 00"
1+30	18.65	22.67	8° 00' 00"	24° 00' 00"	24° 00' 00"
1+40	18.65	22.67	8° 00' 00"	32° 00' 00"	32° 00' 00"
1+50	18.65	22.67	8° 00' 00"	40° 00' 00"	40° 00' 00"
1+60	18.65	22.67	8° 00' 00"	48° 00' 00"	48° 00' 00"
1+70	18.65	22.67	8° 00' 00"	56° 00' 00"	56° 00' 00"
1+80	18.65	22.67	8° 00' 00"	64° 00' 00"	64° 00' 00"
1+90	18.65	22.67	8° 00' 00"	72° 00' 00"	72° 00' 00"
2+00	18.65	22.67	8° 00' 00"	80° 00' 00"	80° 00' 00"
2+10	18.65	22.67	8° 00' 00"	88° 00' 00"	88° 00' 00"
2+20	18.65	22.67	8° 00' 00"	96° 00' 00"	96° 00' 00"
2+30	18.65	22.67	8° 00' 00"	104° 00' 00"	104° 00' 00"
2+40	18.65	22.67	8° 00' 00"	112° 00' 00"	112° 00' 00"
2+50	18.65	22.67	8° 00' 00"	120° 00' 00"	120° 00' 00"
2+60	18.65	22.67	8° 00' 00"	128° 00' 00"	128° 00' 00"
2+70	18.65	22.67	8° 00' 00"	136° 00' 00"	136° 00' 00"
2+80	18.65	22.67	8° 00' 00"	144° 00' 00"	144° 00' 00"
2+86	18.65	22.67	8° 00' 00"	152° 00' 00"	152° 00' 00"



**PEMBROKE LN.**  
 NW 1/4 & BLOCK 3, TO NW OLIVER  
 GREENBROOK MANOR  
 26° 28' 30" A.C.  
 CITY OF WICHITA, KANSAS  
 B. E. SMITH, CITY ENGINEER  
 DATE JUNE 60 FROM NO. C-10-18