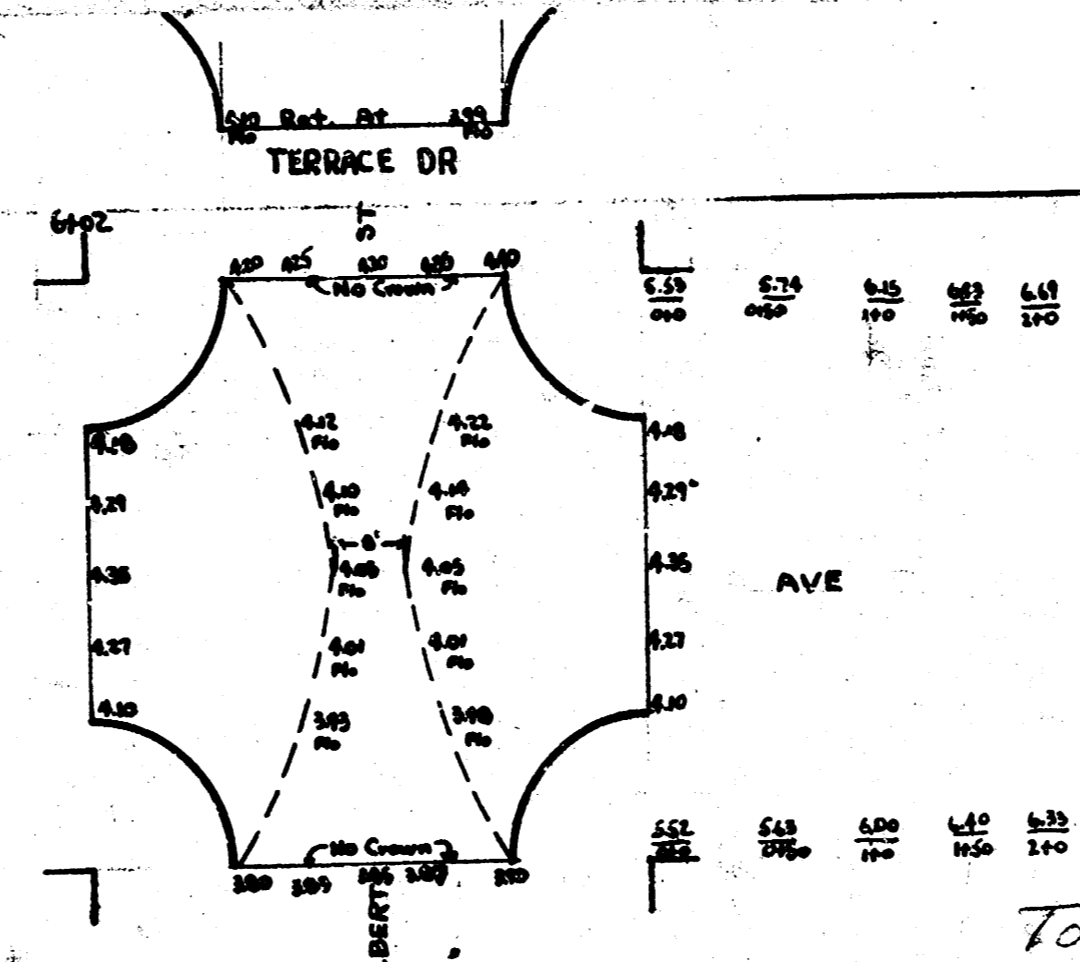
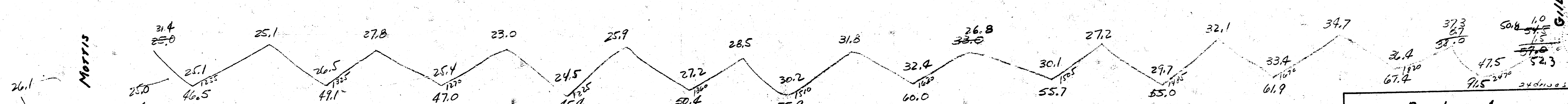
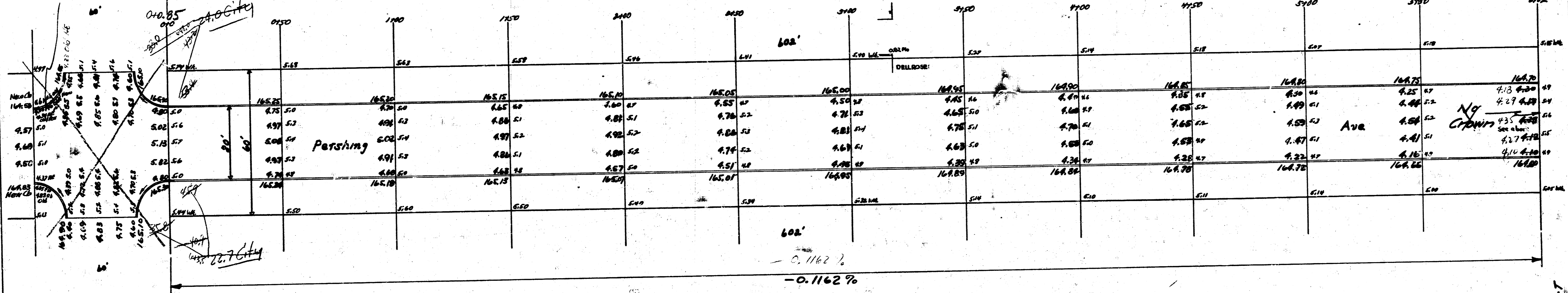


R.M. 4837 Traction Top Hyd. N.W. Cor. Morris & Pershing



Prop.	City
46.5	56.9
49.1	22.7
47.0	24.0
55.4	103.6
55.9	110.9
60.0	
55.7	
55.0	
61.7	
67.4	
31.5	
685.8	
110.9	
Total 754.4 Cu.Yds.	

Remove exist Comb. on radius & install Int. Cb with 15' R.



**Pershing Ave.**  
 S.L. Morris — S.L. Gilbert  
 30' Con. Cb.  
 City of Wichita, Kansas  
 L.K. White City Engineer  
 July 1998 Project 01490