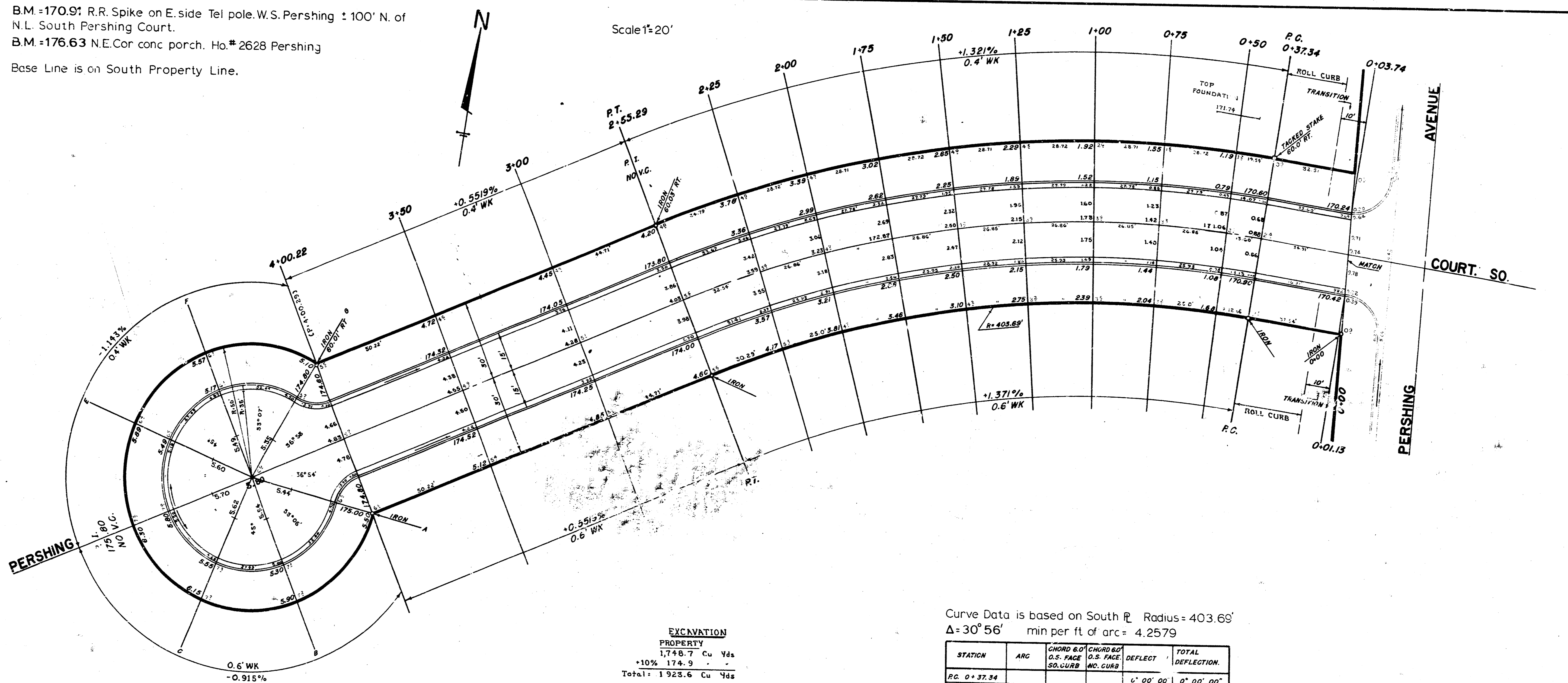


B.M. = 170.9' R.R. Spike on E. side Tel. pole. W.S. Pershing ± 100' N. of  
 N.L. South Pershing Court.  
 B.M. = 176.63 N.E. Cor. conc. porch. Ho. # 2628 Pershing  
 Base Line is on South Property Line.

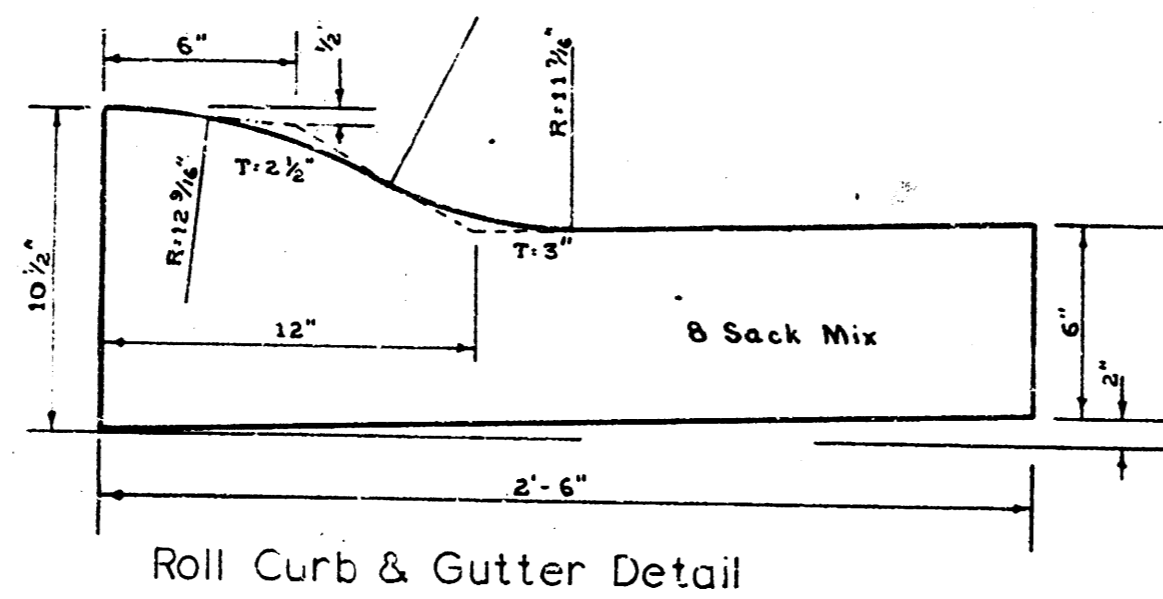
Scale 1" = 20'



**EXCAVATION**  
**PROPERTY**  
 1748.7 Cu Yds  
 +10% 1724.9 " "  
 Total = 1923.6 Cu Yds

Curve Data is based on South R Radius = 403.63'  
 $\Delta = 30^\circ 56'$  min per ft of arc = 4.2579

STATION	ARC	CHORD & O.S. FACE	CHORD & O.S. FACE	DEFLECT	TOTAL DEFLECTION
		S.O. CURB	M.C. CURB		
P.C. 0+37.34				0° 00' 00"	0° 00' 00"
0+50	12.94	12.94	14.26	0° 53' 54"	0° 53' 54"
0+75	25.68	25.68	28.15	1° 46' 27"	2° 40' 21"
1+00					4° 26' 48"
1+25					6° 13' 15"
1+50					7° 59' 42"
2+00					9° 46' 02"
2+25	25.58	25.58	28.15	1° 46' 27"	11° 32' 36"
P.T. 2+55.29	30.96	30.96	34.10	2° 08' 57"	13° 28' 00"



**PERSHING COURT SOUTH.**  
 (South Court-Bk1, Greenbriar Minor)  
 WL Pershing Ave to & incl cul-de-sac.  
**26'-2'-30' ASPHALTIC-CONC.**  
 B.E. SMITH City Engineer  
 CITY OF Wichita, Kansas  
 DATE: 11-2-52 Project No. CIO-24



SHAW COUNTY  
 PUBLIC CLERK  
 CHANDLER