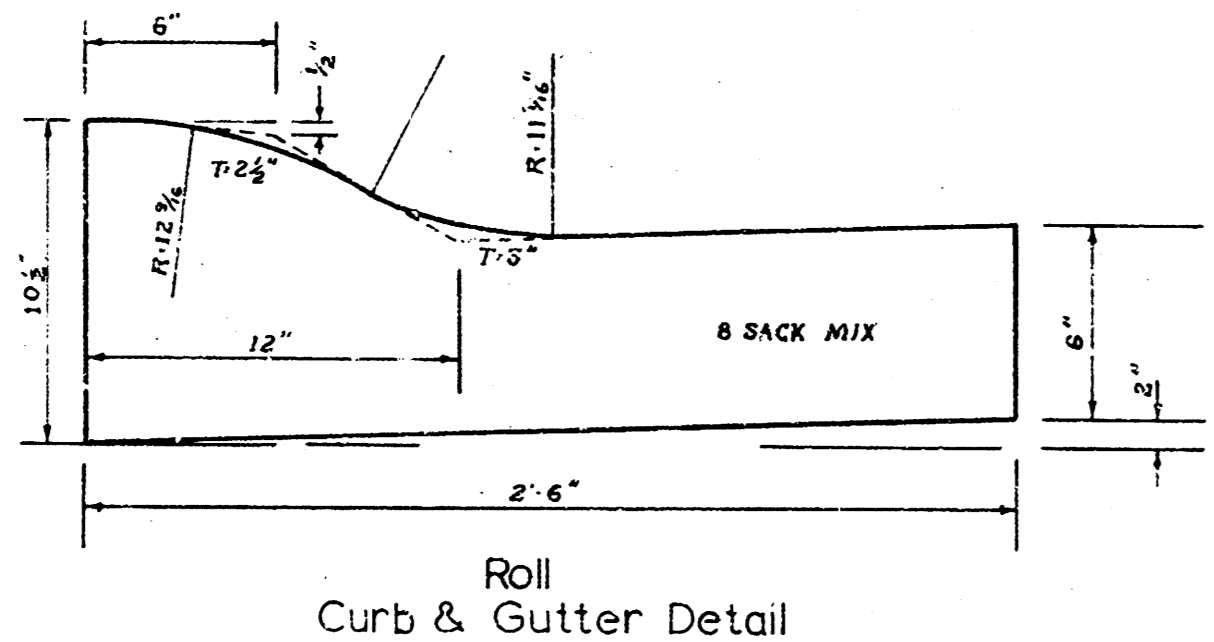
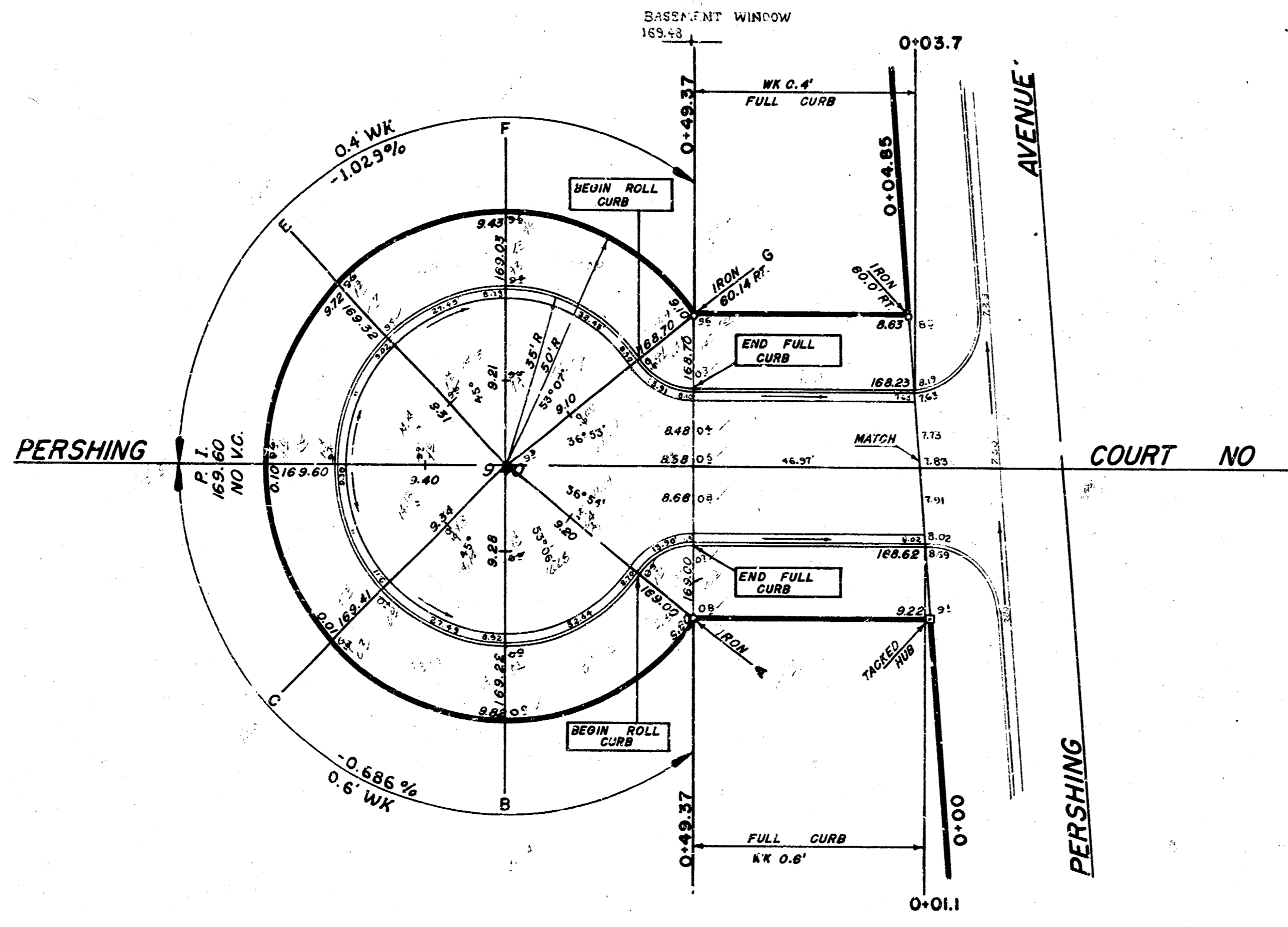


B.M.=170.91 R.R. Spike on E. side Tel pole W. side Pershing approximatley 100' North of the N.L. of the South Pershing Court.
 B.M.=176.63 N.E. Cor conc porch Ho.#2628 Pershing
 Base Line is on South Property Line.
 0+00= Tacked hub



EXCAVATION
 Property 393.7 cu yds
 10% 39.4
 Total 433.1 cu yds



PERSHING COURT NORTH
 (North Court - Blk 1, Greenbriar Manor)
 W.L. Pershing Ave to & incl cul-de-sac.
26'-2'-30' ASPHALTIC-CONC.
 B.E. SMITH City Engineer
 CITY OF Wichita, Kansas
 DATE _____ Proj. No. C10-23