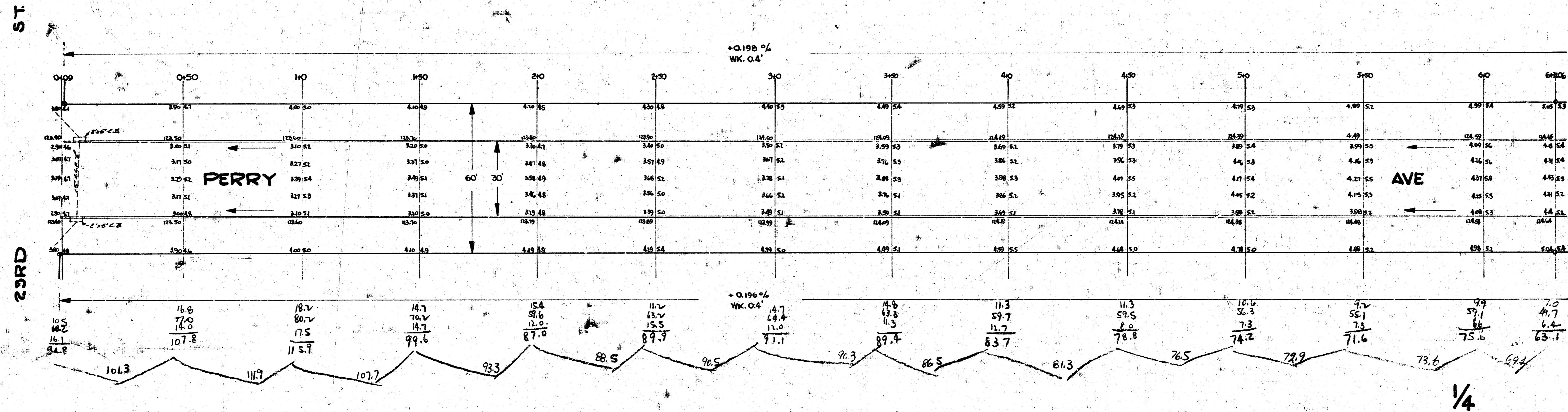


B.M. TOP IRON N.W. COR RIVERLAWN & 23RD ELEV. 123.76
 B.M. TOP IRON S.W. COR 23RD & COOLIDGE ELEV. 124.84

NOTE:
 STA. ON W.P.L.



Drawn by J.B. Egan
 Checked by J.B. Egan

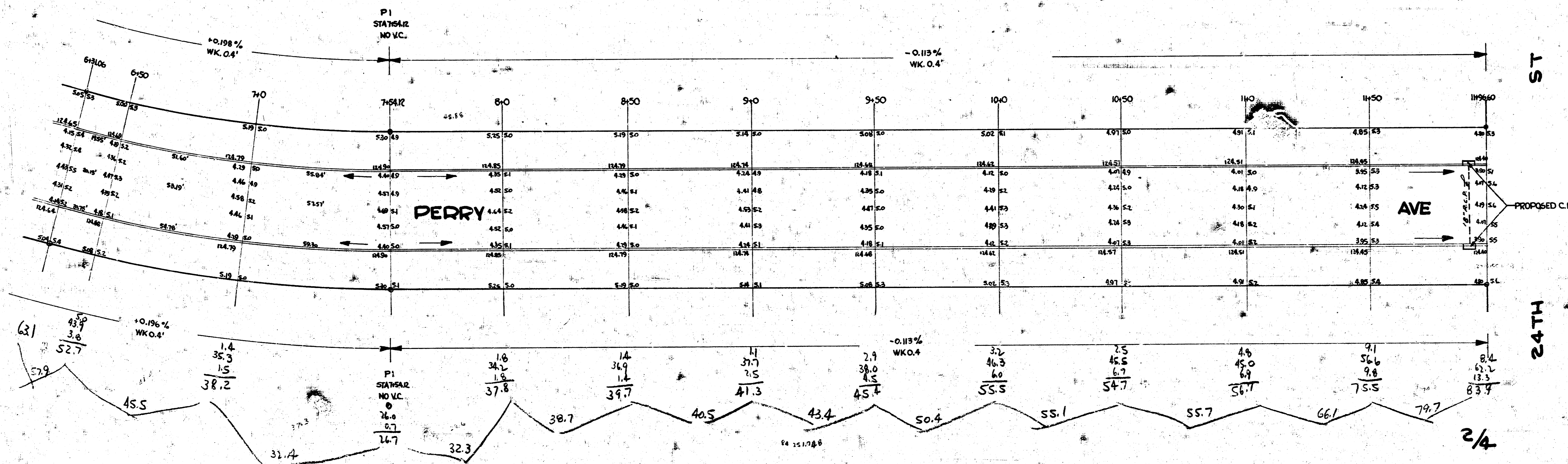
Estimate
 4357.8 yds³
 +10%
 4793.6 yds³

CITY 3/26
 226.6
 110% 22.7
 249.3 Cu Yds.



PERRY AVE
 N.L. 23RD TO S.L. 25TH
30' CONC. & CURB
CITY OF WICHITA, KANSAS
 B.E. SMITH MAR 1954 CITY ENGINEER
 PROJ. NO. C13-170

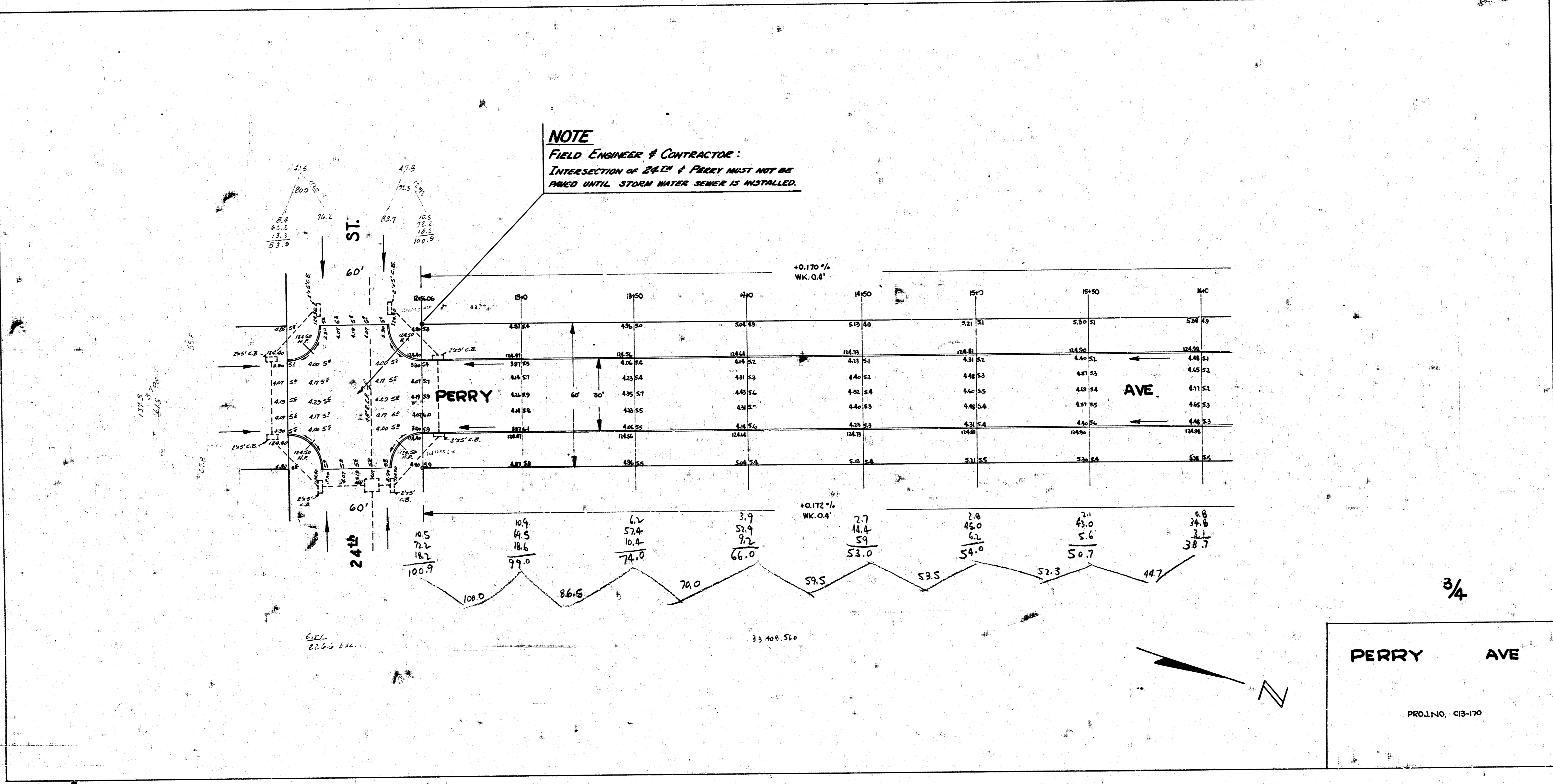
DATA FOR CURVE BET. STA 6+30.06 & STA 7+54.12					
STA ON W.P.L. P=470' & Δ=15° 00'					
STA	ARC LENGTH	CHORD LENGTH	CHORD LENGTH ON DEFLECTION	TOTAL ANGLE	TOTAL ANGLE
ON W.P.L.	OFFSET W.C.B.	OFFSET E.C.B.	ANGLE	DEFLECTION	DEFLECTION
6+30.06					
6+50	18.94'	19.28'	20.98'	1° 09' 14"	1° 09' 14"
7+0	50'	50.94'	56.40'	3° 02' 51"	4° 12' 05"
7+54.12	54.11'	56.12'	59.94'	3° 17' 35"	7° 30' 00"



PERRY AVE

PROJ. NO. C13-110

NOTE
 FIELD ENGINEER & CONTRACTOR:
 INTERSECTION OF 24TH & PERRY MUST NOT BE
 PAVED UNTIL STORM WATER SEWER IS INSTALLED.

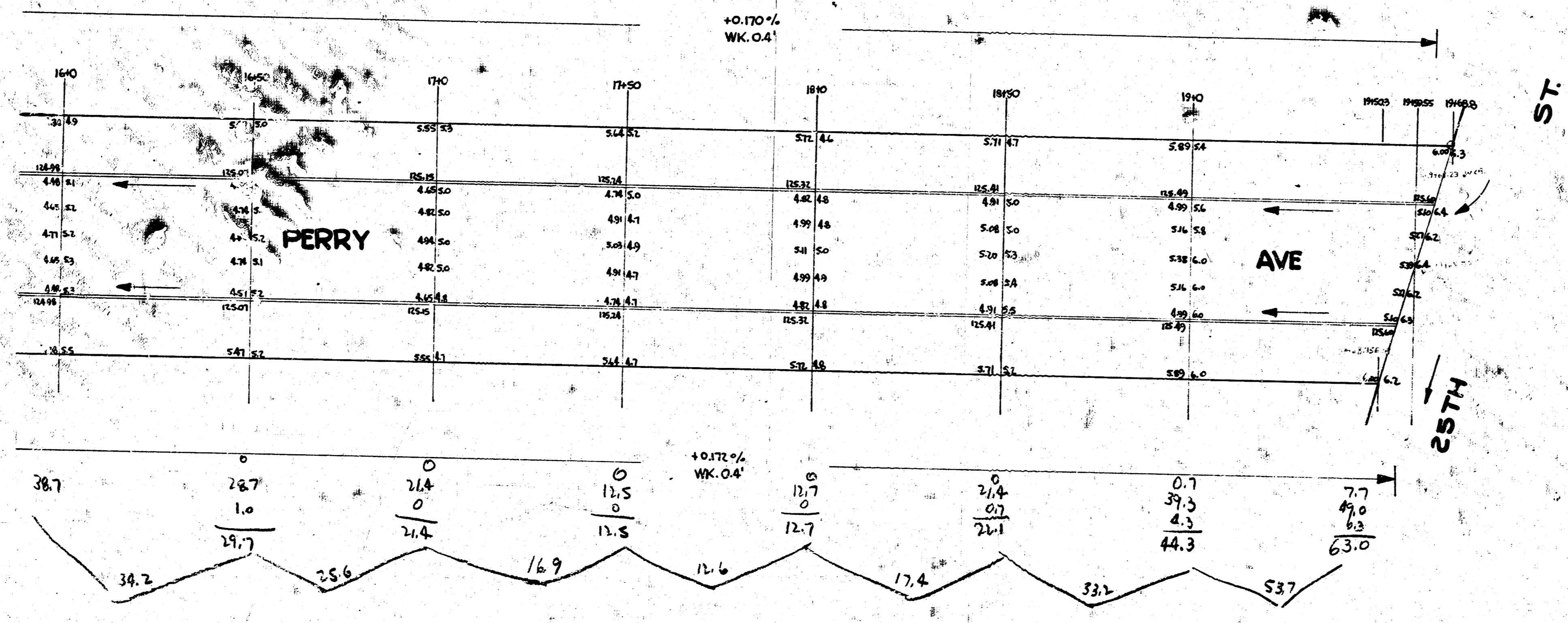


3/4

PERRY AVE

PROJ. NO. C13-170

B.M. S.W.COR. PORCH ON W.S. HO. #2602 NE COOLIDGE & 25TH ELEV. 126.72



4/4
PERRY AVE
 PROJ. NO. C18-110

1 0 1 1