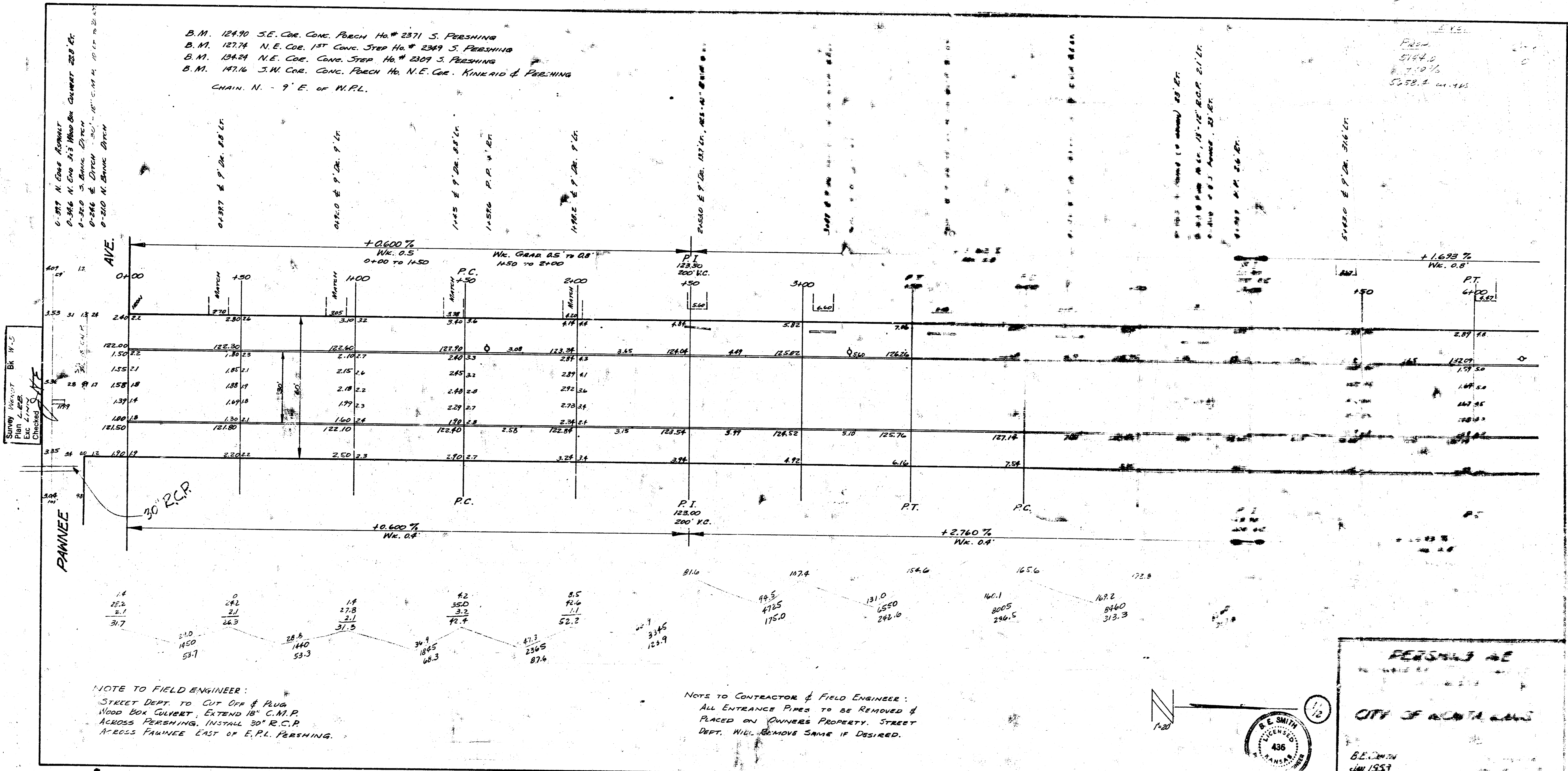
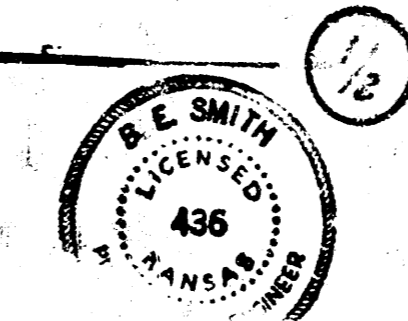


B.M. 124.90 S.E. COR. CONC. POACH HO # 2371 S. PERSHING  
 B.M. 127.74 N.E. COR. 1ST CONC. STEP HO # 2349 S. PERSHING  
 B.M. 134.24 N.E. COR. CONC. STEP HO # 2309 S. PERSHING  
 B.M. 147.16 S.W. COR. CONC. POACH HO N.E. COR. KINERID & PERSHING  
 CHAIN: N. - 9' E. OF W.P.L.



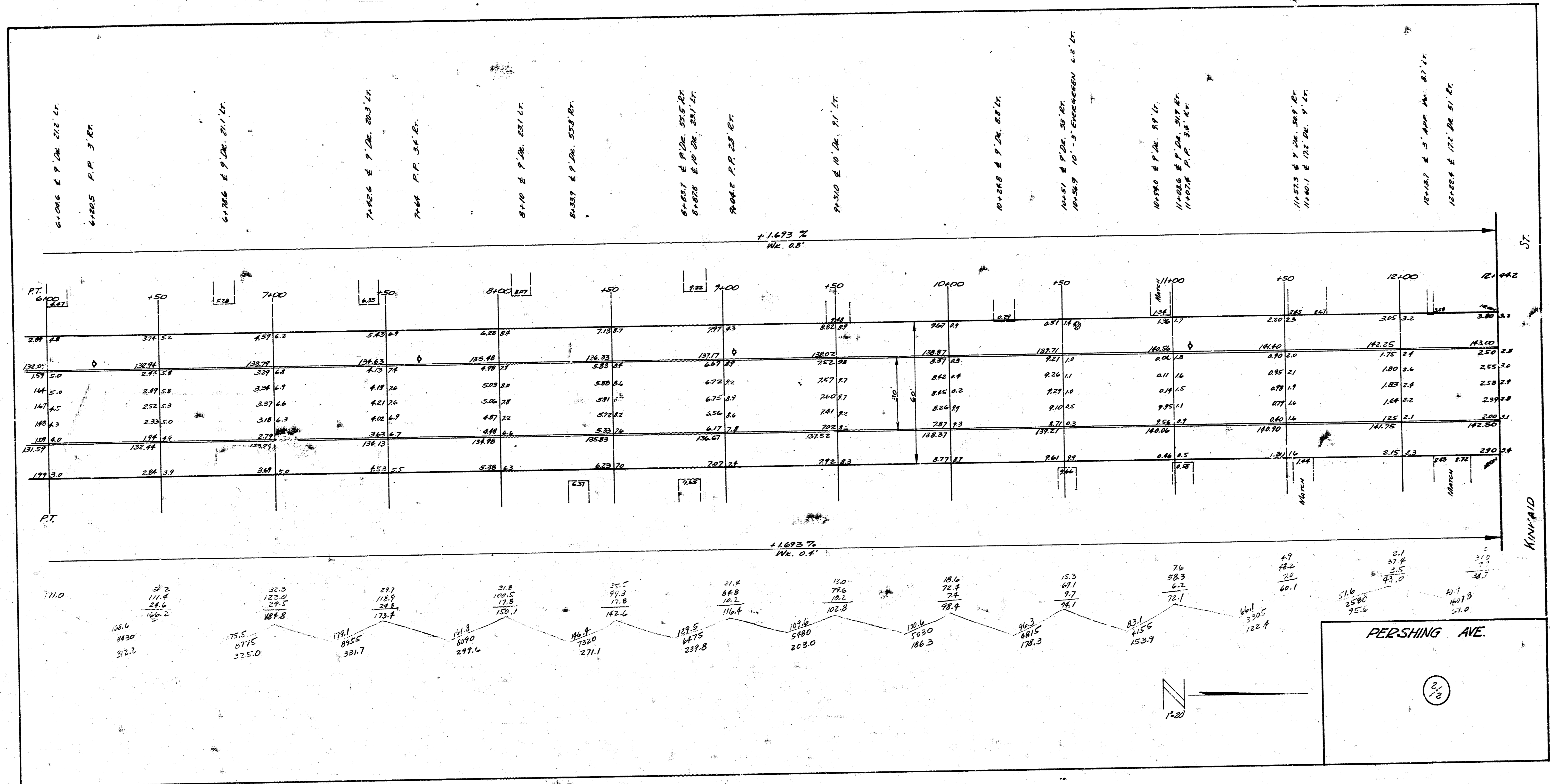
NOTE TO FIELD ENGINEER:  
 STREET DEPT. TO CUT OFF & PLUG  
 WOOD BOX GULCH, EXTEND 18" C.M.P.  
 ACROSS PERSHING, INSTALL 30" R.C.P.  
 ACROSS PANNEE EAST OF E.P.L. PERSHING.

NOTE TO CONTRACTOR & FIELD ENGINEER:  
 ALL ENTRANCE PIPES TO BE REMOVED &  
 PLACED ON OWNERS PROPERTY. STREET  
 DEPT. WILL REMOVE SAME IF DESIRED.



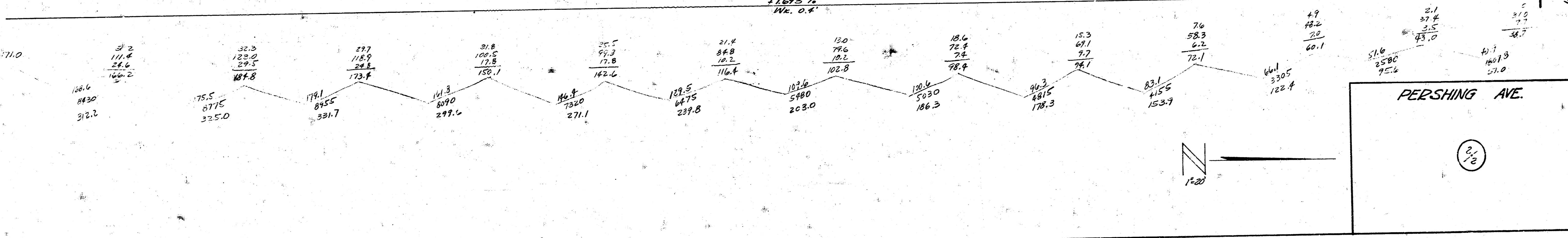
PERSHING AVE  
 CITY OF MONTANA  
 B.E. SMITH  
 JUN 1953

3018.16  
 3018.16



61006 E 9' DA. 216' LT.  
 61005 P.P. 3' RT.  
 61006 E 9' DA. 211' LT.  
 71006 E 9' DA. 203' LT.  
 71006 P.P. 3' RT.  
 81006 E 9' DA. 231' LT.  
 81005 E 9' DA. 505' RT.  
 81007 E 9' DA. 505' RT.  
 91007 E 10' DA. 91' LT.  
 91006 E 9' DA. 88' LT.  
 101007 E 9' DA. 30' RT.  
 101007 10' S. ENCLOSURE 6' LT.  
 101006 E 9' DA. 98' LT.  
 111006 E 9' DA. 30' RT.  
 111007 P.P. 3' RT.  
 111007 E 9' DA. 30' RT.  
 111007 E 10' DA. 9' RT.  
 121007 E 9' DA. 140' RT.  
 121006 E 10' DA. 51' RT.

PT.	61006	71006	81006	91007	101007	111006	121007	121006
2.81	374.32	437.42	543.47	628.84	713.87	797.43	882.27	967.11
132.01	132.94	133.77	134.63	135.48	136.33	137.17	138.02	138.87
157	2.71	3.29	4.13	4.98	5.83	6.67	7.52	8.37
144	2.49	3.34	4.18	5.03	5.88	6.72	7.57	8.42
147	2.52	3.37	4.21	5.06	5.91	6.75	7.60	8.45
148	2.33	3.18	4.02	4.87	5.72	6.56	7.41	8.26
149	1.94	2.79	3.63	4.48	5.33	6.17	7.02	7.87
131.57	132.44	133.31	134.18	135.05	135.92	136.79	137.66	138.53
172	2.84	3.42	4.00	4.58	5.16	5.74	6.32	6.90



PERSHING AVE.  
 2/3