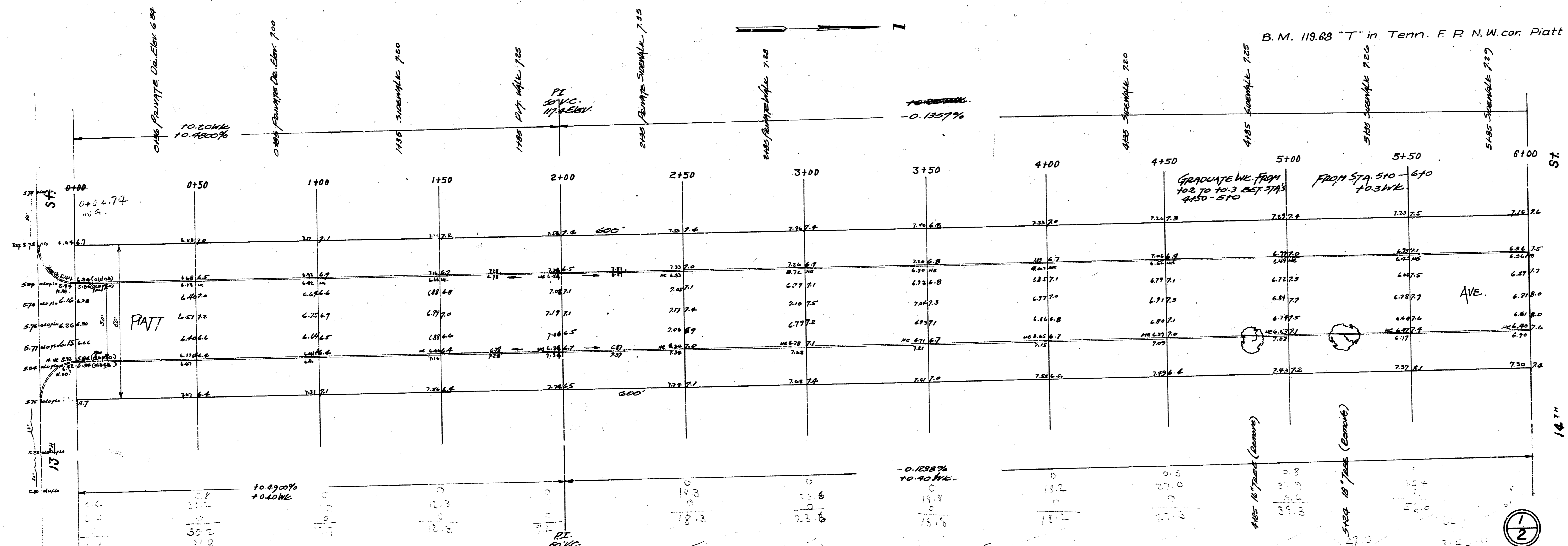


B. M. 119.88 "T" in Terr. F. P. N.W. cor. Platt f 14 St.



0+00	0+50	1+00	1+50	2+00	2+50	3+00	3+50	4+00	4+50	5+00	5+50	6+00
6.66	6.56	6.51	6.50	6.49	6.48	6.47	6.46	6.45	6.44	6.43	6.42	6.41
6.31	6.30	6.29	6.28	6.27	6.26	6.25	6.24	6.23	6.22	6.21	6.20	6.19
6.04	6.03	6.02	6.01	6.00	5.99	5.98	5.97	5.96	5.95	5.94	5.93	5.92
5.75	5.74	5.73	5.72	5.71	5.70	5.69	5.68	5.67	5.66	5.65	5.64	5.63
5.46	5.45	5.44	5.43	5.42	5.41	5.40	5.39	5.38	5.37	5.36	5.35	5.34
5.15	5.14	5.13	5.12	5.11	5.10	5.09	5.08	5.07	5.06	5.05	5.04	5.03
4.84	4.83	4.82	4.81	4.80	4.79	4.78	4.77	4.76	4.75	4.74	4.73	4.72
4.62	4.61	4.60	4.59	4.58	4.57	4.56	4.55	4.54	4.53	4.52	4.51	4.50
4.40	4.39	4.38	4.37	4.36	4.35	4.34	4.33	4.32	4.31	4.30	4.29	4.28
4.26	4.25	4.24	4.23	4.22	4.21	4.20	4.19	4.18	4.17	4.16	4.15	4.14
4.12	4.11	4.10	4.09	4.08	4.07	4.06	4.05	4.04	4.03	4.02	4.01	4.00
3.98	3.97	3.96	3.95	3.94	3.93	3.92	3.91	3.90	3.89	3.88	3.87	3.86
3.84	3.83	3.82	3.81	3.80	3.79	3.78	3.77	3.76	3.75	3.74	3.73	3.72
3.70	3.69	3.68	3.67	3.66	3.65	3.64	3.63	3.62	3.61	3.60	3.59	3.58
3.54	3.53	3.52	3.51	3.50	3.49	3.48	3.47	3.46	3.45	3.44	3.43	3.42
3.38	3.37	3.36	3.35	3.34	3.33	3.32	3.31	3.30	3.29	3.28	3.27	3.26
3.22	3.21	3.20	3.19	3.18	3.17	3.16	3.15	3.14	3.13	3.12	3.11	3.10
3.06	3.05	3.04	3.03	3.02	3.01	3.00	2.99	2.98	2.97	2.96	2.95	2.94
2.90	2.89	2.88	2.87	2.86	2.85	2.84	2.83	2.82	2.81	2.80	2.79	2.78
2.82	2.81	2.80	2.79	2.78	2.77	2.76	2.75	2.74	2.73	2.72	2.71	2.70
2.66	2.65	2.64	2.63	2.62	2.61	2.60	2.59	2.58	2.57	2.56	2.55	2.54
2.48	2.47	2.46	2.45	2.44	2.43	2.42	2.41	2.40	2.39	2.38	2.37	2.36
2.32	2.31	2.30	2.29	2.28	2.27	2.26	2.25	2.24	2.23	2.22	2.21	2.20
2.14	2.13	2.12	2.11	2.10	2.09	2.08	2.07	2.06	2.05	2.04	2.03	2.02
1.98	1.97	1.96	1.95	1.94	1.93	1.92	1.91	1.90	1.89	1.88	1.87	1.86
1.80	1.79	1.78	1.77	1.76	1.75	1.74	1.73	1.72	1.71	1.70	1.69	1.68
1.62	1.61	1.60	1.59	1.58	1.57	1.56	1.55	1.54	1.53	1.52	1.51	1.50
1.46	1.45	1.44	1.43	1.42	1.41	1.40	1.39	1.38	1.37	1.36	1.35	1.34
1.28	1.27	1.26	1.25	1.24	1.23	1.22	1.21	1.20	1.19	1.18	1.17	1.16
1.10	1.09	1.08	1.07	1.06	1.05	1.04	1.03	1.02	1.01	1.00	0.99	0.98
0.92	0.91	0.90	0.89	0.88	0.87	0.86	0.85	0.84	0.83	0.82	0.81	0.80
0.74	0.73	0.72	0.71	0.70	0.69	0.68	0.67	0.66	0.65	0.64	0.63	0.62
0.56	0.55	0.54	0.53	0.52	0.51	0.50	0.49	0.48	0.47	0.46	0.45	0.44
0.38	0.37	0.36	0.35	0.34	0.33	0.32	0.31	0.30	0.29	0.28	0.27	0.26
0.20	0.19	0.18	0.17	0.16	0.15	0.14	0.13	0.12	0.11	0.10	0.09	0.08
0.10	0.09	0.08	0.07	0.06	0.05	0.04	0.03	0.02	0.01	0.00	0.00	0.00

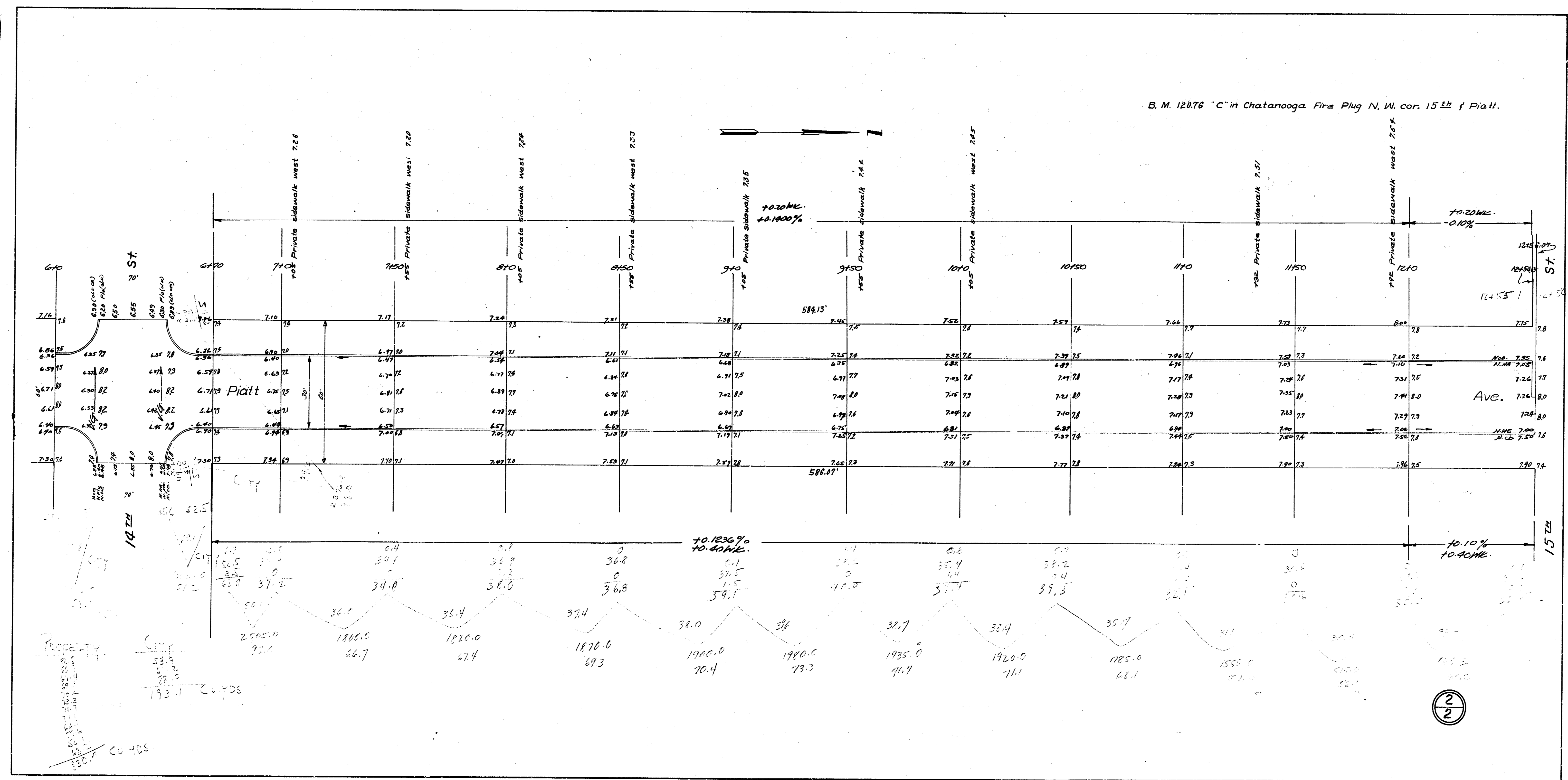
GRAND TOTALS

SHEET (1)	581.9	SHEET (2)	193.1
SHEET (2)	830.7	SHEET (1)	193.1
10%	1412.6	10%	212.4
	1411.3		212.4
	1553.9		212.4

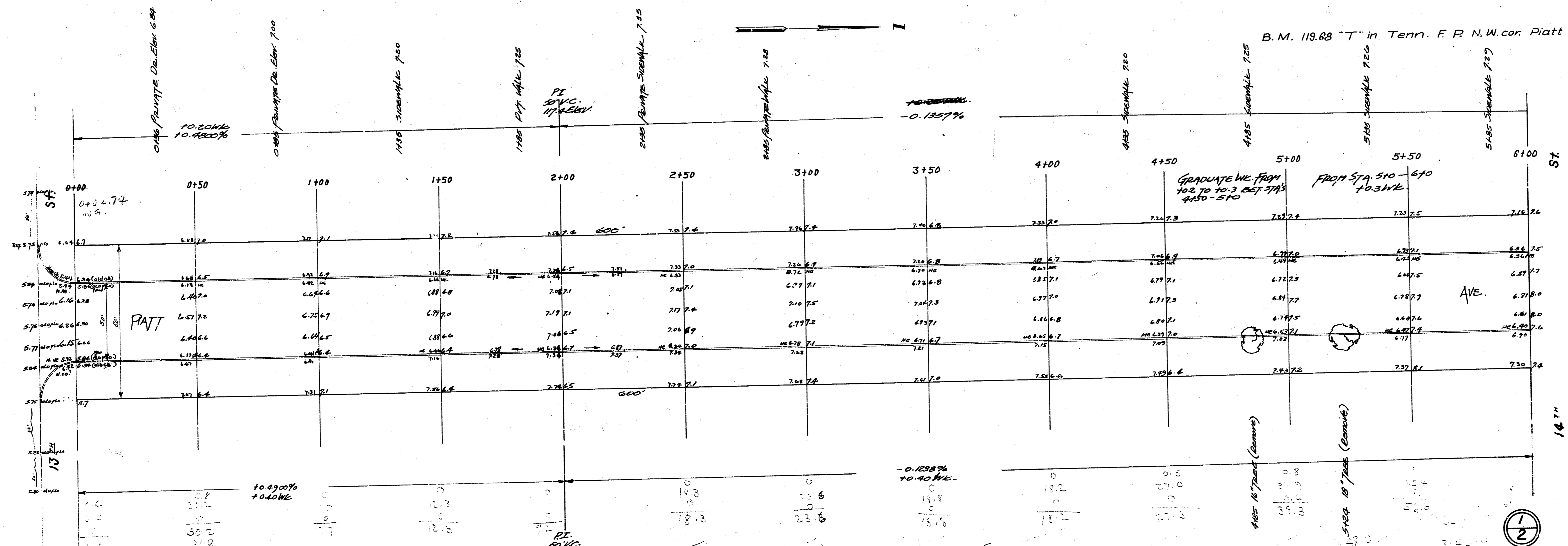
1553.9 CU YDS.

PIATT AVE.
 N.L. 13TH to S.L. 15TH
 30' CONC. & CB.
 CITY OF WICHITA, KANSAS
 L. K. WHITE CITY ENGINEER
 AUGUST 1949 PROJECT NO. C19-148

B. M. 12876 "C" in Chatanooga Fire Plug N. W. cor. 15th & Platt.



B. M. 119.88 "T" in Terr. F. P. N.W. cor. Platt f 14 St.



0+00	0+50	1+00	1+50	2+00	2+50	3+00	3+50	4+00	4+50	5+00	5+50	6+00
6.66	6.56	6.51	6.50	6.49	6.48	6.47	6.46	6.45	6.44	6.43	6.42	6.41
6.40	6.39	6.38	6.37	6.36	6.35	6.34	6.33	6.32	6.31	6.30	6.29	6.28
6.27	6.26	6.25	6.24	6.23	6.22	6.21	6.20	6.19	6.18	6.17	6.16	6.15
6.14	6.13	6.12	6.11	6.10	6.09	6.08	6.07	6.06	6.05	6.04	6.03	6.02
6.01	6.00	5.99	5.98	5.97	5.96	5.95	5.94	5.93	5.92	5.91	5.90	5.89
5.88	5.87	5.86	5.85	5.84	5.83	5.82	5.81	5.80	5.79	5.78	5.77	5.76
5.75	5.74	5.73	5.72	5.71	5.70	5.69	5.68	5.67	5.66	5.65	5.64	5.63
5.62	5.61	5.60	5.59	5.58	5.57	5.56	5.55	5.54	5.53	5.52	5.51	5.50
5.49	5.48	5.47	5.46	5.45	5.44	5.43	5.42	5.41	5.40	5.39	5.38	5.37
5.36	5.35	5.34	5.33	5.32	5.31	5.30	5.29	5.28	5.27	5.26	5.25	5.24
5.23	5.22	5.21	5.20	5.19	5.18	5.17	5.16	5.15	5.14	5.13	5.12	5.11
5.10	5.09	5.08	5.07	5.06	5.05	5.04	5.03	5.02	5.01	5.00	4.99	4.98
4.97	4.96	4.95	4.94	4.93	4.92	4.91	4.90	4.89	4.88	4.87	4.86	4.85
4.84	4.83	4.82	4.81	4.80	4.79	4.78	4.77	4.76	4.75	4.74	4.73	4.72
4.71	4.70	4.69	4.68	4.67	4.66	4.65	4.64	4.63	4.62	4.61	4.60	4.59
4.58	4.57	4.56	4.55	4.54	4.53	4.52	4.51	4.50	4.49	4.48	4.47	4.46
4.45	4.44	4.43	4.42	4.41	4.40	4.39	4.38	4.37	4.36	4.35	4.34	4.33
4.32	4.31	4.30	4.29	4.28	4.27	4.26	4.25	4.24	4.23	4.22	4.21	4.20
4.19	4.18	4.17	4.16	4.15	4.14	4.13	4.12	4.11	4.10	4.09	4.08	4.07
4.06	4.05	4.04	4.03	4.02	4.01	4.00	3.99	3.98	3.97	3.96	3.95	3.94
3.93	3.92	3.91	3.90	3.89	3.88	3.87	3.86	3.85	3.84	3.83	3.82	3.81
3.80	3.79	3.78	3.77	3.76	3.75	3.74	3.73	3.72	3.71	3.70	3.69	3.68
3.67	3.66	3.65	3.64	3.63	3.62	3.61	3.60	3.59	3.58	3.57	3.56	3.55
3.54	3.53	3.52	3.51	3.50	3.49	3.48	3.47	3.46	3.45	3.44	3.43	3.42
3.41	3.40	3.39	3.38	3.37	3.36	3.35	3.34	3.33	3.32	3.31	3.30	3.29
3.28	3.27	3.26	3.25	3.24	3.23	3.22	3.21	3.20	3.19	3.18	3.17	3.16
3.15	3.14	3.13	3.12	3.11	3.10	3.09	3.08	3.07	3.06	3.05	3.04	3.03
3.02	3.01	3.00	2.99	2.98	2.97	2.96	2.95	2.94	2.93	2.92	2.91	2.90
2.89	2.88	2.87	2.86	2.85	2.84	2.83	2.82	2.81	2.80	2.79	2.78	2.77
2.76	2.75	2.74	2.73	2.72	2.71	2.70	2.69	2.68	2.67	2.66	2.65	2.64
2.63	2.62	2.61	2.60	2.59	2.58	2.57	2.56	2.55	2.54	2.53	2.52	2.51
2.50	2.49	2.48	2.47	2.46	2.45	2.44	2.43	2.42	2.41	2.40	2.39	2.38
2.37	2.36	2.35	2.34	2.33	2.32	2.31	2.30	2.29	2.28	2.27	2.26	2.25
2.24	2.23	2.22	2.21	2.20	2.19	2.18	2.17	2.16	2.15	2.14	2.13	2.12
2.11	2.10	2.09	2.08	2.07	2.06	2.05	2.04	2.03	2.02	2.01	2.00	1.99
1.98	1.97	1.96	1.95	1.94	1.93	1.92	1.91	1.90	1.89	1.88	1.87	1.86
1.85	1.84	1.83	1.82	1.81	1.80	1.79	1.78	1.77	1.76	1.75	1.74	1.73
1.72	1.71	1.70	1.69	1.68	1.67	1.66	1.65	1.64	1.63	1.62	1.61	1.60
1.59	1.58	1.57	1.56	1.55	1.54	1.53	1.52	1.51	1.50	1.49	1.48	1.47
1.46	1.45	1.44	1.43	1.42	1.41	1.40	1.39	1.38	1.37	1.36	1.35	1.34
1.33	1.32	1.31	1.30	1.29	1.28	1.27	1.26	1.25	1.24	1.23	1.22	1.21
1.20	1.19	1.18	1.17	1.16	1.15	1.14	1.13	1.12	1.11	1.10	1.09	1.08
1.07	1.06	1.05	1.04	1.03	1.02	1.01	1.00	0.99	0.98	0.97	0.96	0.95
0.94	0.93	0.92	0.91	0.90	0.89	0.88	0.87	0.86	0.85	0.84	0.83	0.82
0.81	0.80	0.79	0.78	0.77	0.76	0.75	0.74	0.73	0.72	0.71	0.70	0.69
0.68	0.67	0.66	0.65	0.64	0.63	0.62	0.61	0.60	0.59	0.58	0.57	0.56
0.55	0.54	0.53	0.52	0.51	0.50	0.49	0.48	0.47	0.46	0.45	0.44	0.43
0.42	0.41	0.40	0.39	0.38	0.37	0.36	0.35	0.34	0.33	0.32	0.31	0.30
0.29	0.28	0.27	0.26	0.25	0.24	0.23	0.22	0.21	0.20	0.19	0.18	0.17
0.16	0.15	0.14	0.13	0.12	0.11	0.10	0.09	0.08	0.07	0.06	0.05	0.04
0.03	0.02	0.01	0.00	-0.01	-0.02	-0.03	-0.04	-0.05	-0.06	-0.07	-0.08	-0.09
-0.10	-0.11	-0.12	-0.13	-0.14	-0.15	-0.16	-0.17	-0.18	-0.19	-0.20	-0.21	-0.22
-0.23	-0.24	-0.25	-0.26	-0.27	-0.28	-0.29	-0.30	-0.31	-0.32	-0.33	-0.34	-0.35
-0.36	-0.37	-0.38	-0.39	-0.40	-0.41	-0.42	-0.43	-0.44	-0.45	-0.46	-0.47	-0.48
-0.49	-0.50	-0.51	-0.52	-0.53	-0.54	-0.55	-0.56	-0.57	-0.58	-0.59	-0.60	-0.61
-0.62	-0.63	-0.64	-0.65	-0.66	-0.67	-0.68	-0.69	-0.70	-0.71	-0.72	-0.73	-0.74
-0.75	-0.76	-0.77	-0.78	-0.79	-0.80	-0.81	-0.82	-0.83	-0.84	-0.85	-0.86	-0.87
-0.88	-0.89	-0.90	-0.91	-0.92	-0.93	-0.94	-0.95	-0.96	-0.97	-0.98	-0.99	-1.00

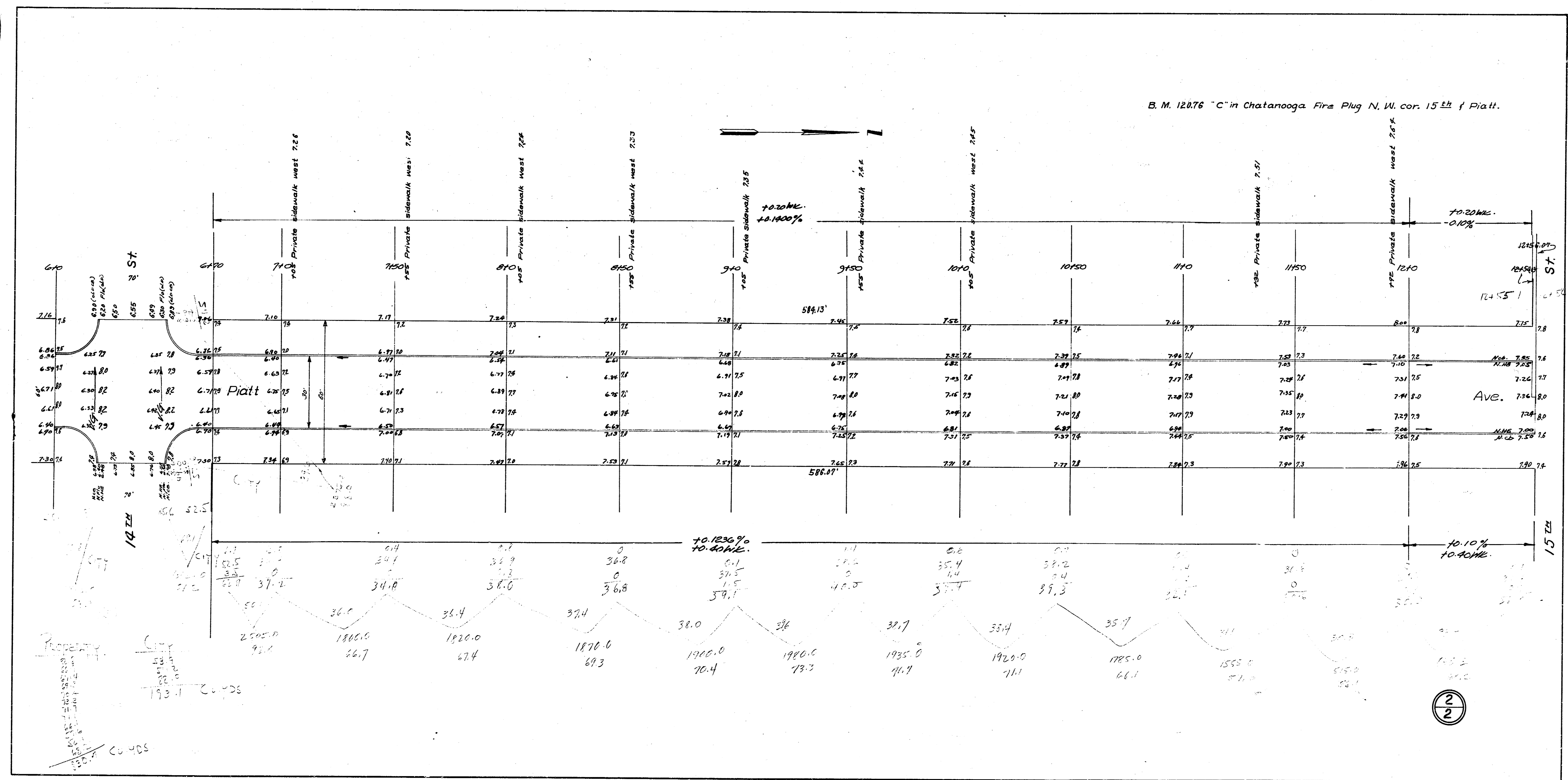
GRAND TOTALS

SHEET (1)	581.9	SHEET (2)	193.1
SHEET (2)	830.7	SHEET (1)	193.1
	1412.6		212.4
10%	141.3		
	1553.9		

CU YDS

PIATT AVE.
 N.L. 13TH to S.L. 15TH
 30' CONC. & CB.
 CITY OF WICHITA, KANSAS
 L. K. WHITE CITY ENGINEER
 AUGUST 1949 PROJECT NO. C19-148

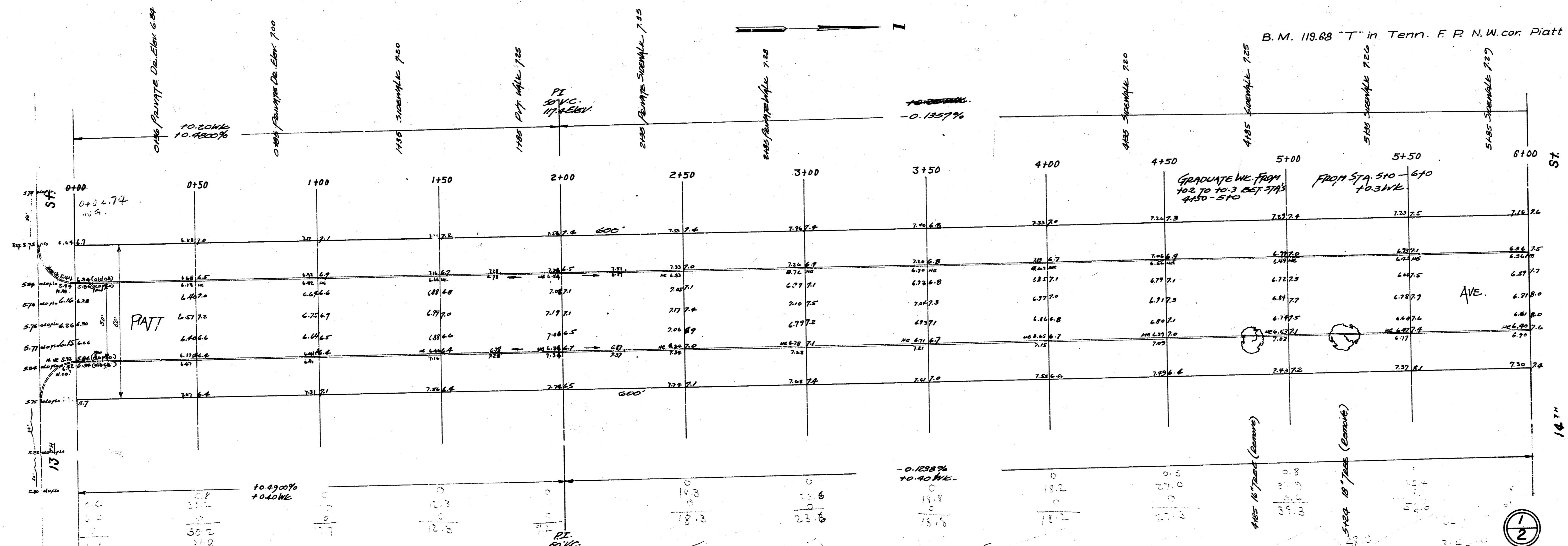
B. M. 12876 "C" in Chatanooga Fire Plug N. W. cor. 15th & Platt.



2
2

4 3 3 18

B. M. 119.88 "T" in Terr. F. P. N.W. cor. Platt f 14 St.



0+00	0+50	1+00	1+50	2+00	2+50	3+00	3+50	4+00	4+50	5+00	5+50	6+00
13.3	24.0	15.0	10.8	6.90	20.8	21.1	18.5	22.8	35.3	240.0		
28.0	120.0	750.0	540.0	690	1040.0	1055.0	925.0	1140.0	1645.0	2400.0		
43.3	144.0	765.0	550.8	750	1240.8	1276.1	943.5	1162.8	1710.3	2640.0		

GRAND TOTALS

SHEET (1)	581.9	SHEET (2)	193.1
SHEET (2)	830.7	SHEET (1)	193.1
10%	1412.6	10%	212.4
	1411.3		212.4
	1553.9		212.4

1553.9 CU. YDS.

PIATT AVE.
 N.L. 13TH to S.L. 15TH
 30' CONC. & CB.
 CITY OF WICHITA, KANSAS
 L. K. WHITE CITY ENGINEER
 AUGUST 1949 PROJECT NO. C19-148

B. M. 12876 "C" in Chatanooga Fire Plug N. W. cor. 15th & Platt.

