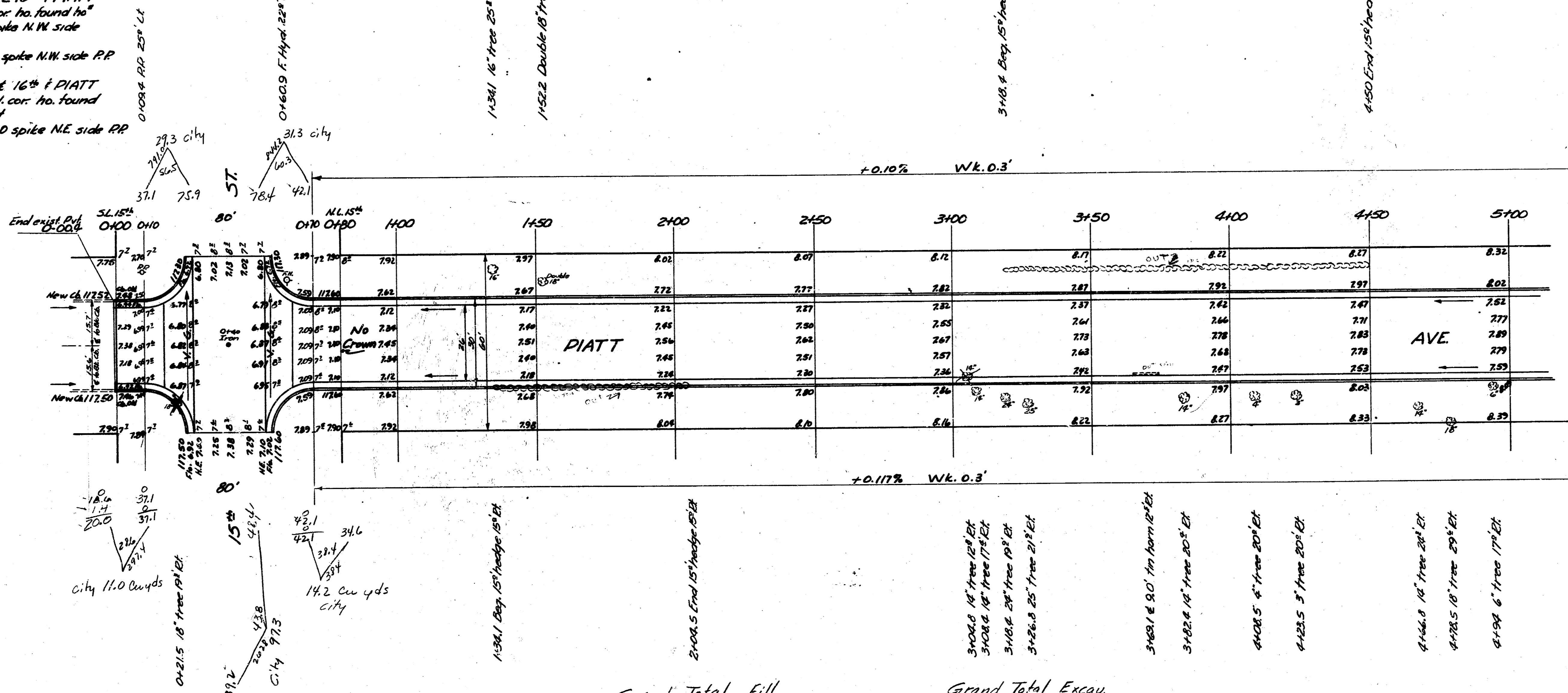


B.M. 120.63 S.E. Cor. Conc. Stop Hds. # 1701 N. Piatt
 B.M. 118.02 N. End Ch. S.W. Cor. 15th & Piatt Ash

TIES TO IRON & 15th & PIATT
 1. 72.65' N.E. to SW cor. ho. found ho.
 2. 57.60' S.E. to 60' spike N.W. side
 3. 39.84' S.W. to 60' spike N.W. side R.P.
 2nd tree east

TIES TO IRON & 16th & PIATT
 1. 66.55' N.E. to S.W. cor. ho. found ho.
 2. 30.90' N.W. to 60' spike N.E. side R.P.



Prop.	City
0	75.3
	14.2
	11.0
	21.3
	31.7
	153.7

Grand Total Fill

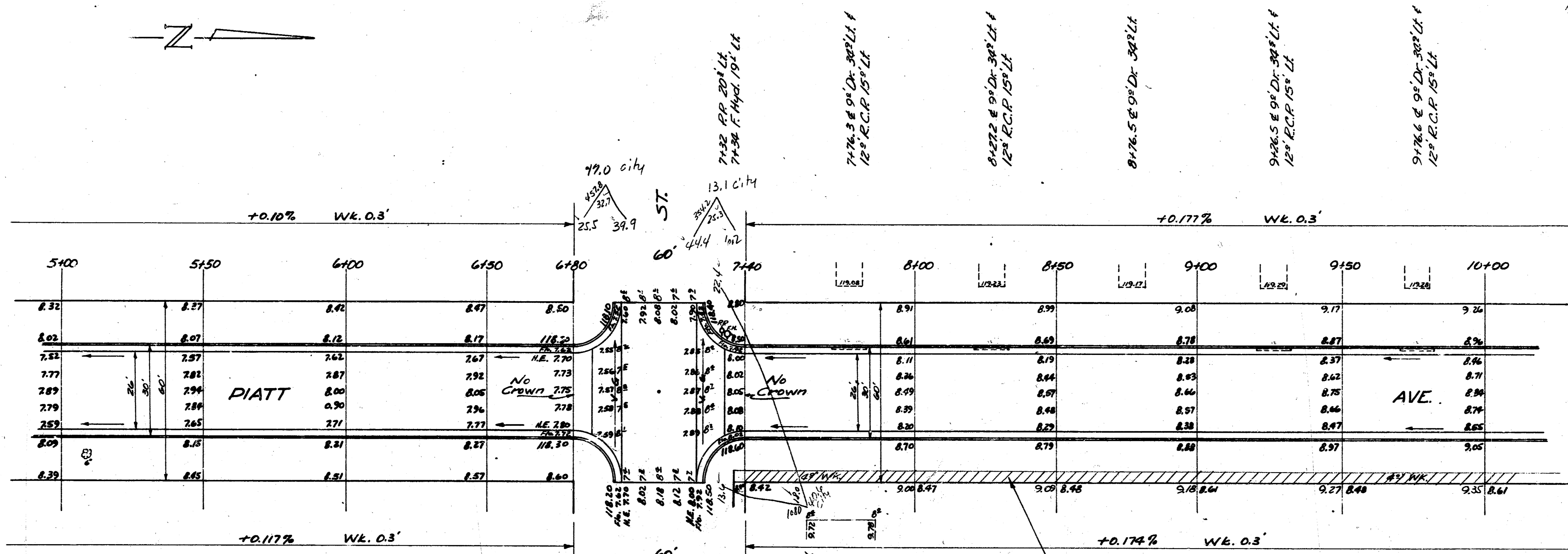
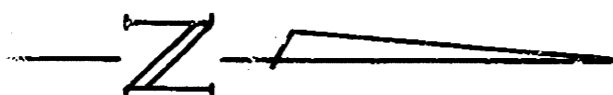
Prop.	City
X-sec. 211.0 cu.yd	0
+10th 21.1	
Total 232.1 cu.yd	

Grand Total Excav.

Prop.	City
X-sec. 463.2	153.7
+10th 46.3	74.7
Total 509.5 cu.yd	0.2
	Total 234.0 cu.yd

DIATT AVE.
 S.L. 15th - S.L. 17th
 26-2-30 A.C.
 CITY OF WICHITA, KANS.
 B.E. SMITH CITY ENGINEER
 JAN. 1953 PROJ. NO. C12-187

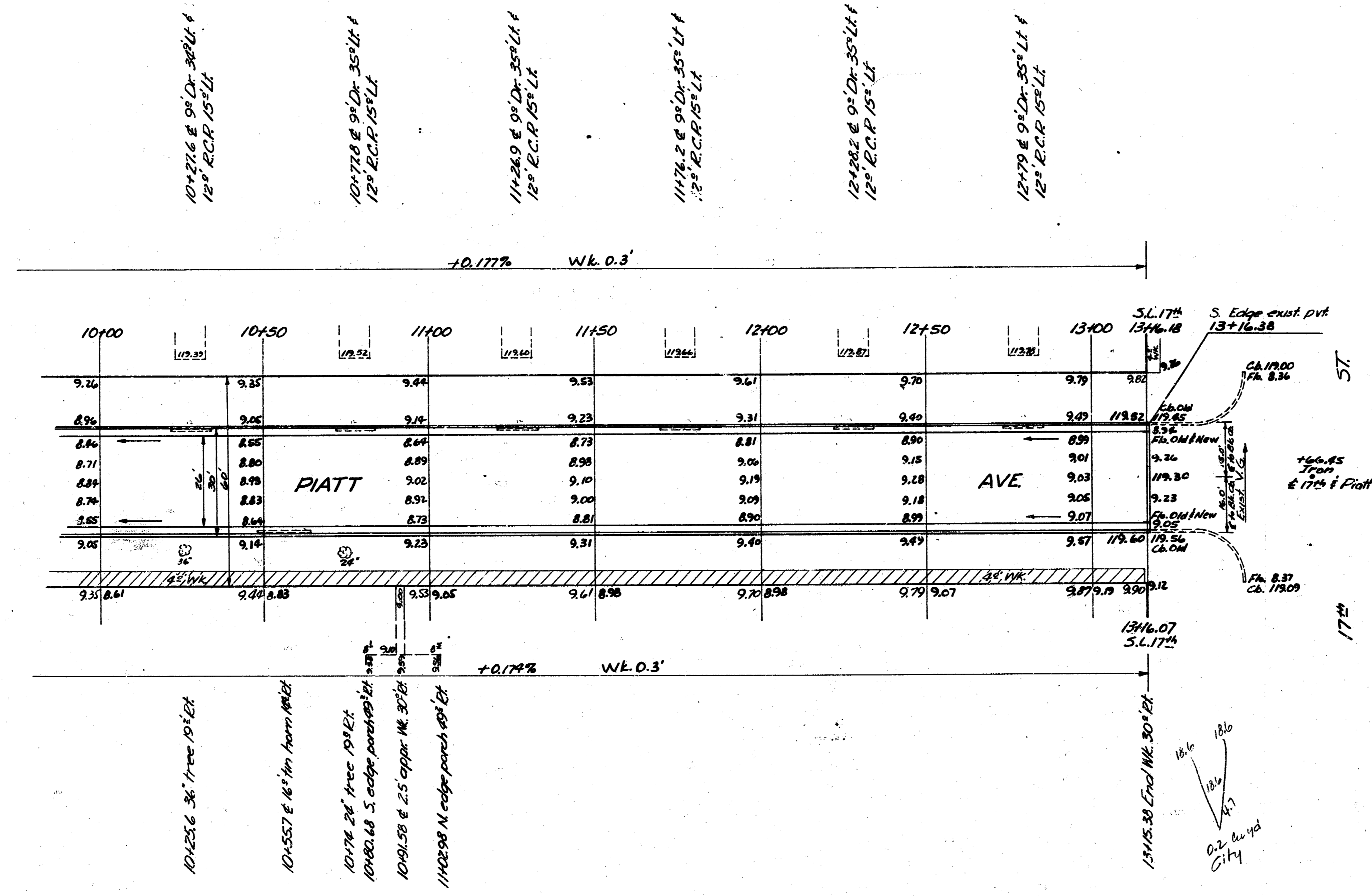
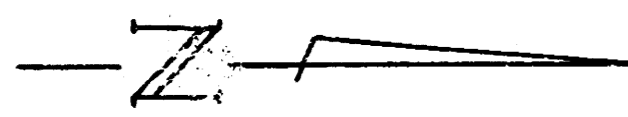
2
 To K. J. J. C.
 1/7



Excav.	City
Prop	0.6
	17.0
	13.1
	70.7

5+06.5' Tree 21" Lt

15 x 50
230 x 16
1150.6
111.2
122.0
122.0



Prop. Excav. City
0.2 cu. yd.