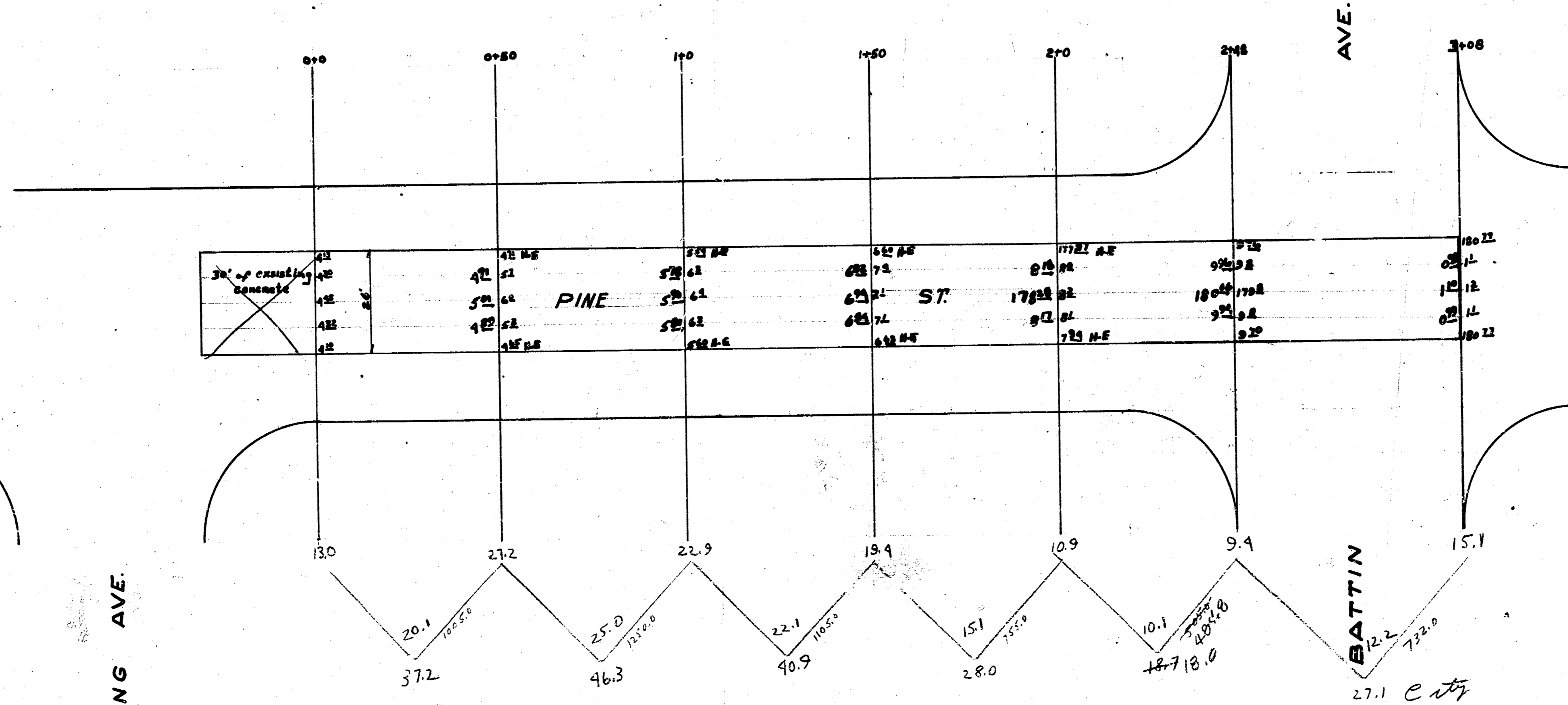


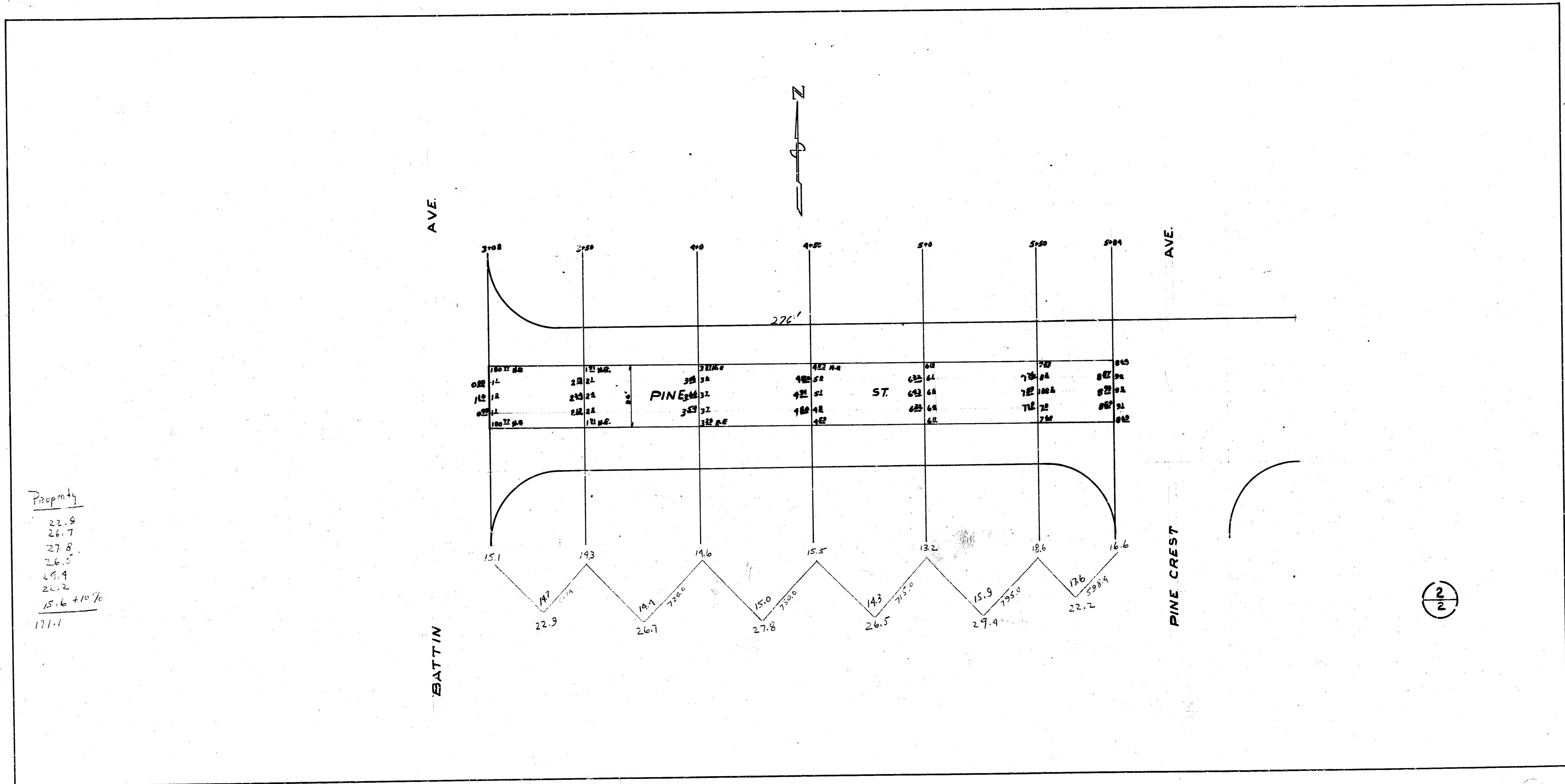
B.M. 2034 "T" in Tree, Top by L. N.E. cor. of Pine & Old Mason
G.M.



Property	City
37.2	27.1
46.3	2.7 + 10%
40.9	29.8
28.0	
18.7	
17.1 + 10%	
18.2	

1/2

PINE ST
30' E. of EL HARDING W. L. PINECREST
26' CONC
CITY OF WICHITA, KANSAS
L.K. WHITE CITY ENGINEER
JULY 1947



Property
 22.9
 26.7
 27.8
 26.5
 29.4
 22.2
 15.6 + 10%
 171.1