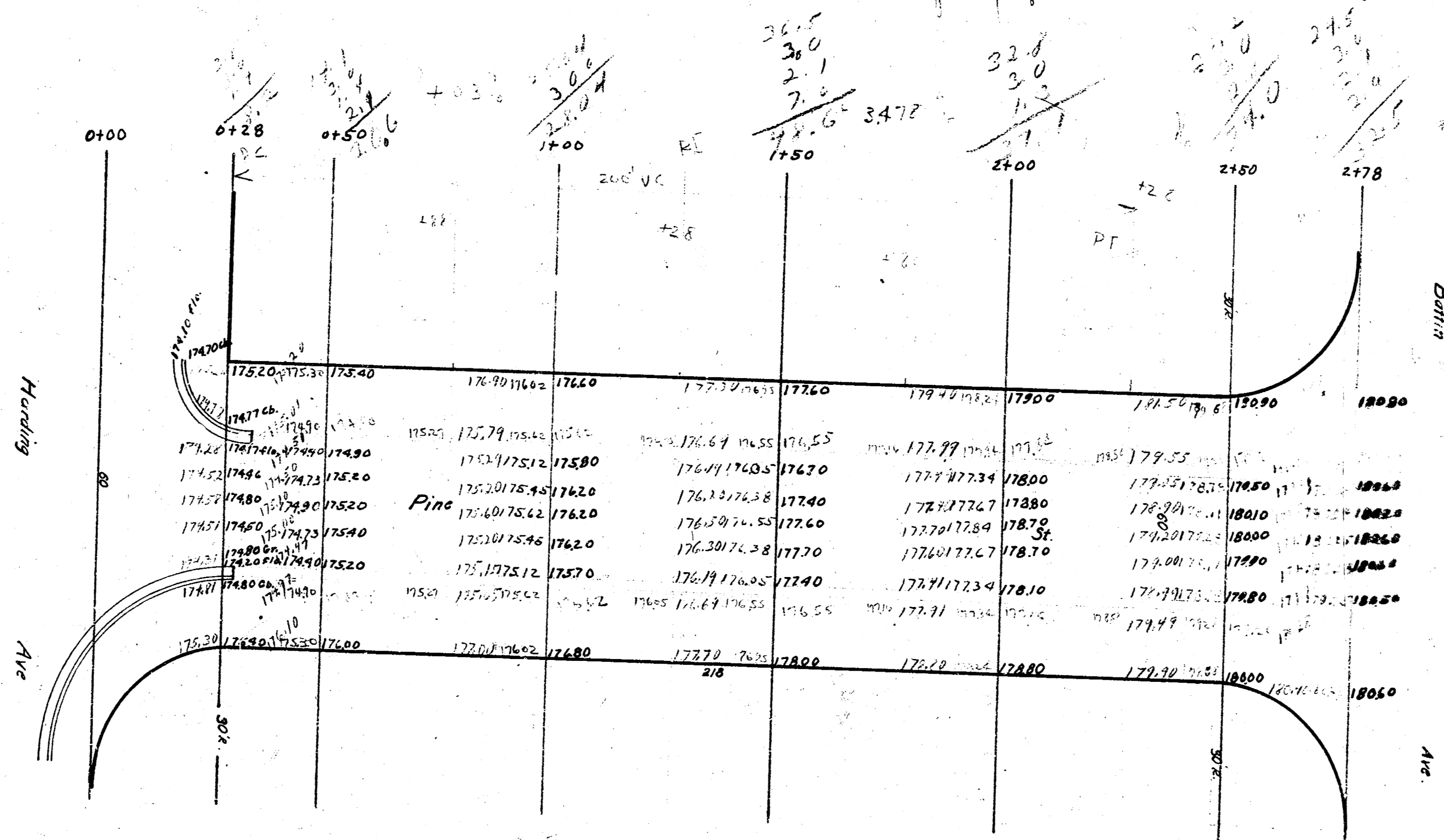


PINE AVE. - W.L. BATTIN TO E.L. HARDING

Curb & Gutter only

B.M. Elev. 114.75 S.W. coping of culvert on Embank E. of Buckley Ave



18.30
 15.55
 57.6
 50.6
 25.30
 93.7
 55
 21.65
 102.4
 53
 26.00
 99.64
 11.00
 42.2