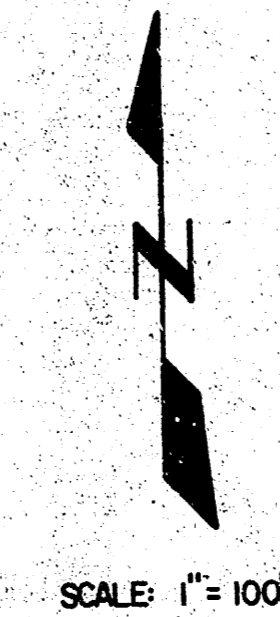
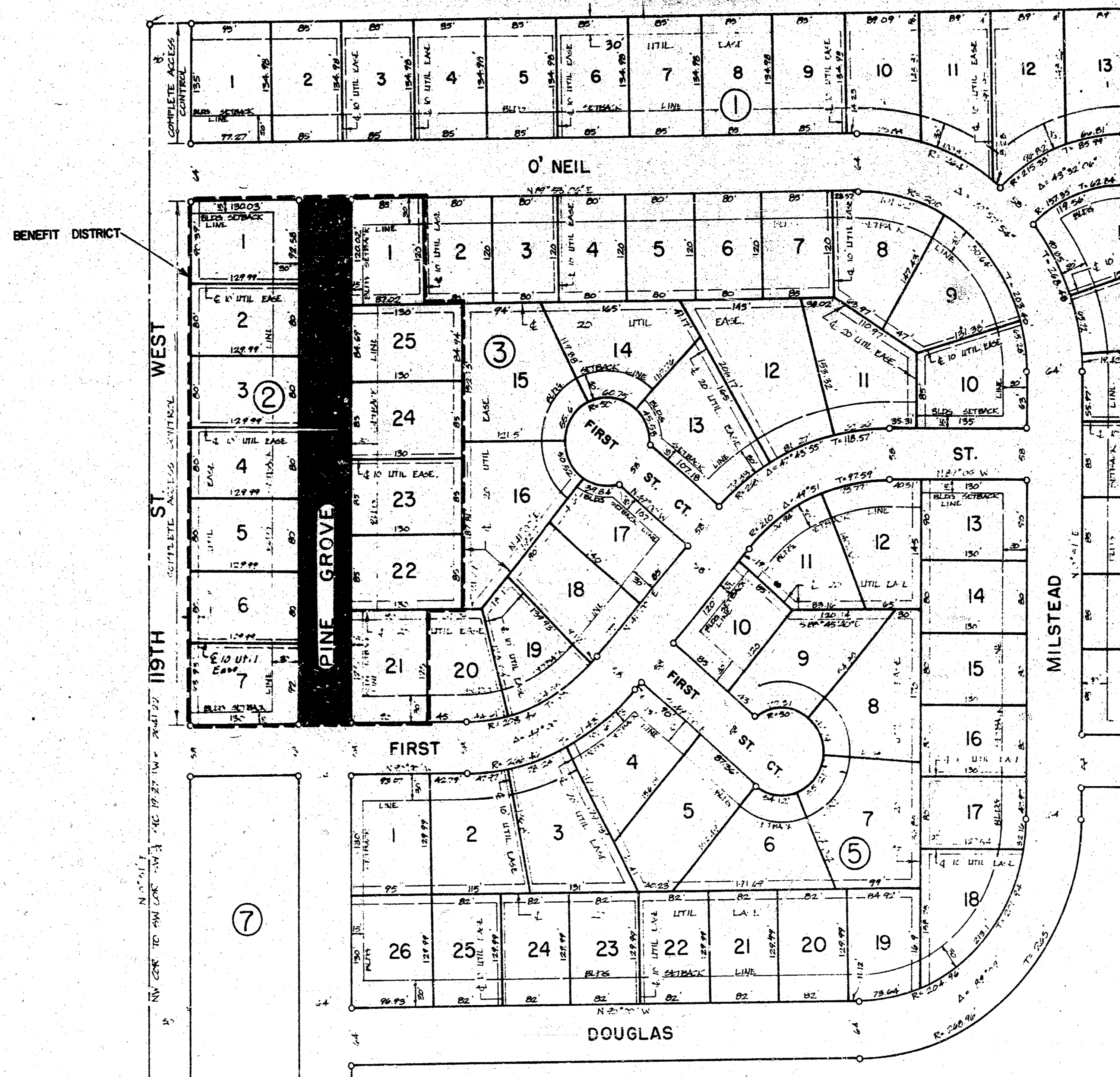


# STREET IMPROVEMENTS PINE GROVE

FROM THE NORTH LINE OF FIRST STREET TO THE SOUTH  
LINE OF O'NEIL, WESTLINK VILLAGE EIGHTEENTH ADDITION  
PROJECT NO. 472-76-245-81662-000-000-001  
CITY OF WICHITA, KANSAS  
MICHAEL E. LINDEBAK, CITY ENGINEER  
JULY, 1987

### GENERAL NOTES

1. Utility service lines, poles, valve boxes, meters, and etcetera are to be adjusted as necessary by others prior to or during construction unless the plans specifically call for their adjustment by the contractor. Existing utilities and their location, as shown on the plans, represent the best information obtainable for design. Location information has been obtained from the various utility companies and is either from company record drawings or company provided field locations. The plan locations shown are not guaranteed. Additional existing utilities may also be encountered. The contractor will be required to work around existing utilities within the right-of-way which do not conflict with proposed construction.
2. Rubble from the removal of miscellaneous structures and excess excavation which is to be wasted shall be disposed of on sites to be provided by the contractor. These sites shall be approved by the engineer as to suitability, appearance and site location. Locations that, in the opinion of the engineer, will leave an unsightly appearance will not be approved.
3. Limits of earthwork shall match existing ground elevations at the right-of-way line unless otherwise noted on the plans with a new finished grade elevation. When a new finished grade elevation is shown, the earthwork shall extend one foot beyond the right-of-way line and then sloped up or down using permissible slopes to match the existing ground surface.
4. The contractor shall be responsible for preserving property irons. The contractor will be required to re-establish any property irons which are damaged or destroyed by his construction operations. Such irons shall be re-established by a licensed land surveyor or a licensed professional engineer in accordance with state laws.



SCALE 1"=100'

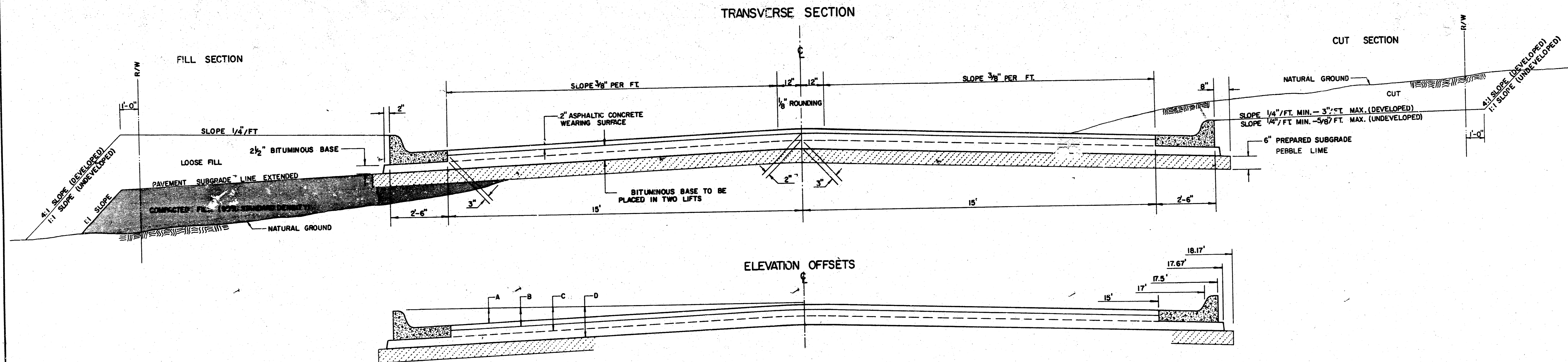
### DRAWING INDEX

SHEET	TITLE
1	MAP AND BENEFIT DISTRICT
2	TYPICAL SECTIONS
3	STREET IMPROVEMENT PLANS
4	EARTHWORK SECTIONS

WICHITA, KANSAS STREET IMPROVEMENTS			
MAP AND BENEFIT DISTRICT PINE GROVE			
PROJECT NO. 472-76-245-81662-000-000-001			
<b>H</b> CASTLE & ASSOCIATES ENGINEERS WICHITA, KANSAS	DSG JMK	DWG FILE NO	1
	DR TDS	8735-D-80,071	
CH MES	APP RLC	SHEET NO 1 OF 4	REV.
DATE	JULY 1987		

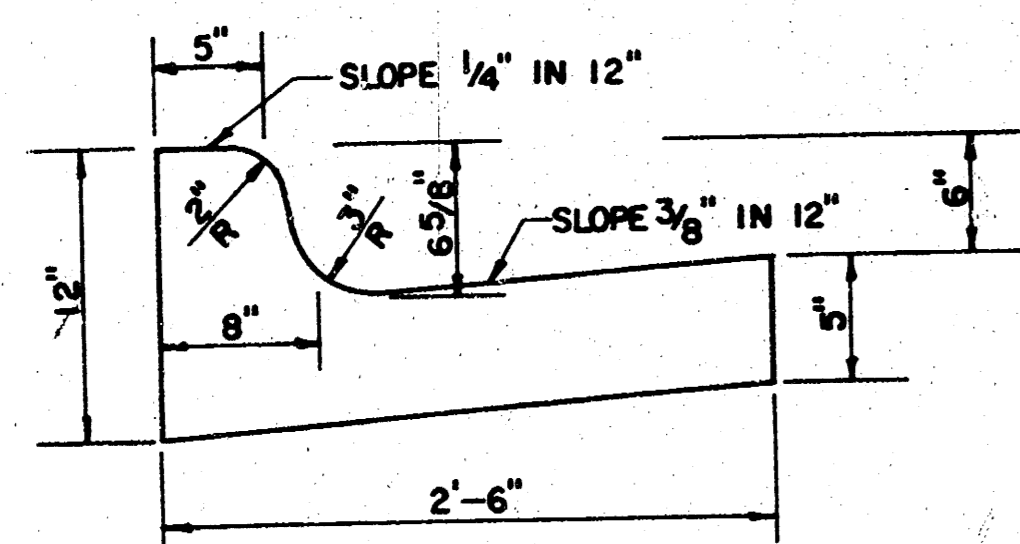
FILMED FROM THE BEST  
AVAILABLE COPY ....

# TYPICAL 35' PAVEMENT DETAILS

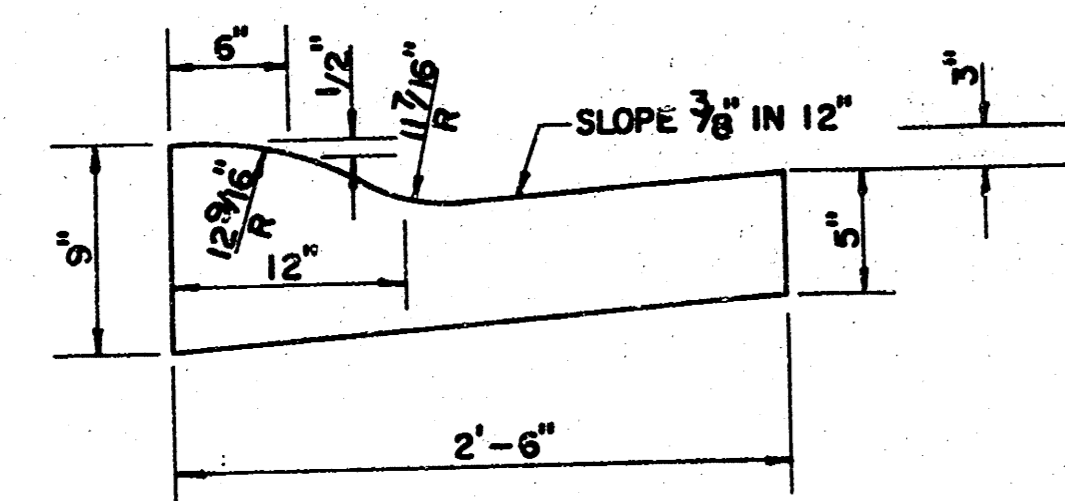


	DISTANCE FROM CENTERLINE (LT. & RT.)													
	0'	2'	4'	6'	8.5'	10'	12'	14'	15'	17'	17.5'	17.67'	18.17'	
A: TOP OF CURBS TO TOP OF SURFACE LIFT	0.04	0.08	0.14	0.21	0.29	0.33	0.39	0.46	0.49	—	—	—	—	
B: TOP OF CURBS TO TOP OF UPPER BASE LIFT	0.21	0.25	0.31	0.37	0.45	0.50	0.56	0.62	0.65	—	—	—	—	
C: TOP OF CURBS TO TOP OF LOWER BASE LIFT	0.37	0.43	0.50	0.57	0.67	0.72	0.79	0.87	0.90	0.98	1.00	1.00	—	
D: TOP OF CURBS TO TOP OF SUBGRADE	0.62	0.67	0.74	0.81	0.90	0.95	1.02	1.08	1.12	1.19	1.21	1.21	1.23	

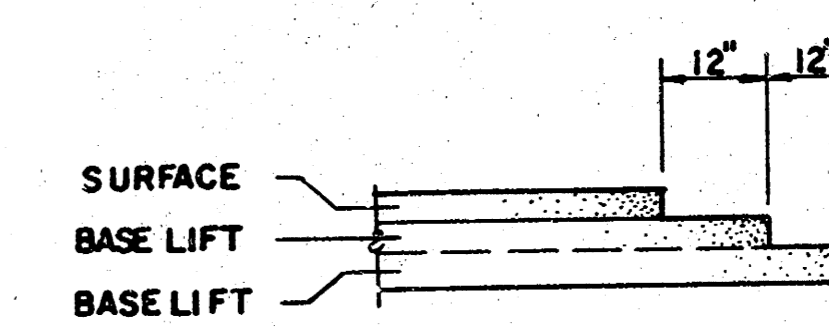
COMBINED CURB & GUTTER



ROLL TYPE COMBINED CURB & GUTTER



TRANSVERSE CONSTRUCTION JOINTS



TRANSVERSE CONSTRUCTION JOINTS SHALL BE CONSTRUCTED IN FLEXIBLE BASE PAVEMENTS AT LOCATIONS WHERE PAVEMENT JOINTS EXISTING FLEXIBLE BASE PAVEMENT AS SHOWN BY THE DETAIL. ALL COSTS ASSOCIATED WITH THE CONSTRUCTION OF THE TRANSVERSE JOINT SHALL BE INCLUDED IN THE BID PRICE FOR SQUARE YARDS 7" ASPHALTIC CONCRETE (5" BITUMINOUS BASE).

## GENERAL NOTES

- 1) THE ASPHALTIC CONCRETE PAVEMENT BETWEEN THE COMBINED CURB AND GUTTER SHALL BE PAID AS SQUARE YARDS OF 7" ASPHALTIC CONCRETE (5" BITUMINOUS BASE).
- 2) THE BITUMINOUS BASE UNDER AND BEHIND THE COMBINED CURB AND GUTTER SHALL BE PAID AS SQUARE YARDS OF 2 1/2" BITUMINOUS BASE.
- 3) A TACK COAT OF EMULSIFIED ASPHALT (SC-1H OR CSS-1H) SHALL BE APPLIED AT AN APPROXIMATE RATE OF 0.05 GALLONS PER SQUARE YARD BETWEEN EACH LIFT OF ASPHALTIC MATERIAL.
- 4) BITUMINOUS BASE AND ASPHALTIC CONCRETE WEARING SURFACE SHALL BE PLACED WITH A LAYDOWN MACHINE HAVING AUTOMATIC CONTROLS FOR LINE AND GRADE.
- 5) CONSTRUCTION JOINTS IN EACH LIFT SHALL BE STAGGERED A MINIMUM DISTANCE OF ONE (1) FOOT FROM JOINTS IN PRECEDING LIFTS AND PLACED SO THAT A JOINT WILL BE CONSTRUCTED ON THE CENTERLINE OF THE TOP LIFT.
- 6) CONTRACTOR TO BID ONLY ONE SUBGRADE TREATMENT ALTERNATE WHEN ALTERNATES ARE PROVIDED IN THE PROPOSAL AND CONTRACT. THE ALTERNATE CHOSEN BY THE SUCCESSFUL BIDDER SHALL BE USED IN CONSTRUCTING THIS PROJECT.

WICHITA, KANSAS  
STREET IMPROVEMENTS

7 INCH RESIDENTIAL ASPHALTIC CONCRETE  
PAVEMENT WITH 5 INCH BITUMINOUS BASE  
PROJECT NO. 472-76-245-81662-000-000-001

CASTLE & ASSOCIATES ENGINEERS WICHITA, KANSAS	DSG JMK	DWG FILE NO.	2/4
	DR JMK	6735-D-80,072	
	CH MES	APP RLC	SHEET NO. 2 OF 4
DATE	JULY	1987	REV

FILMED FROM THE BEST AVAILABLE COPY

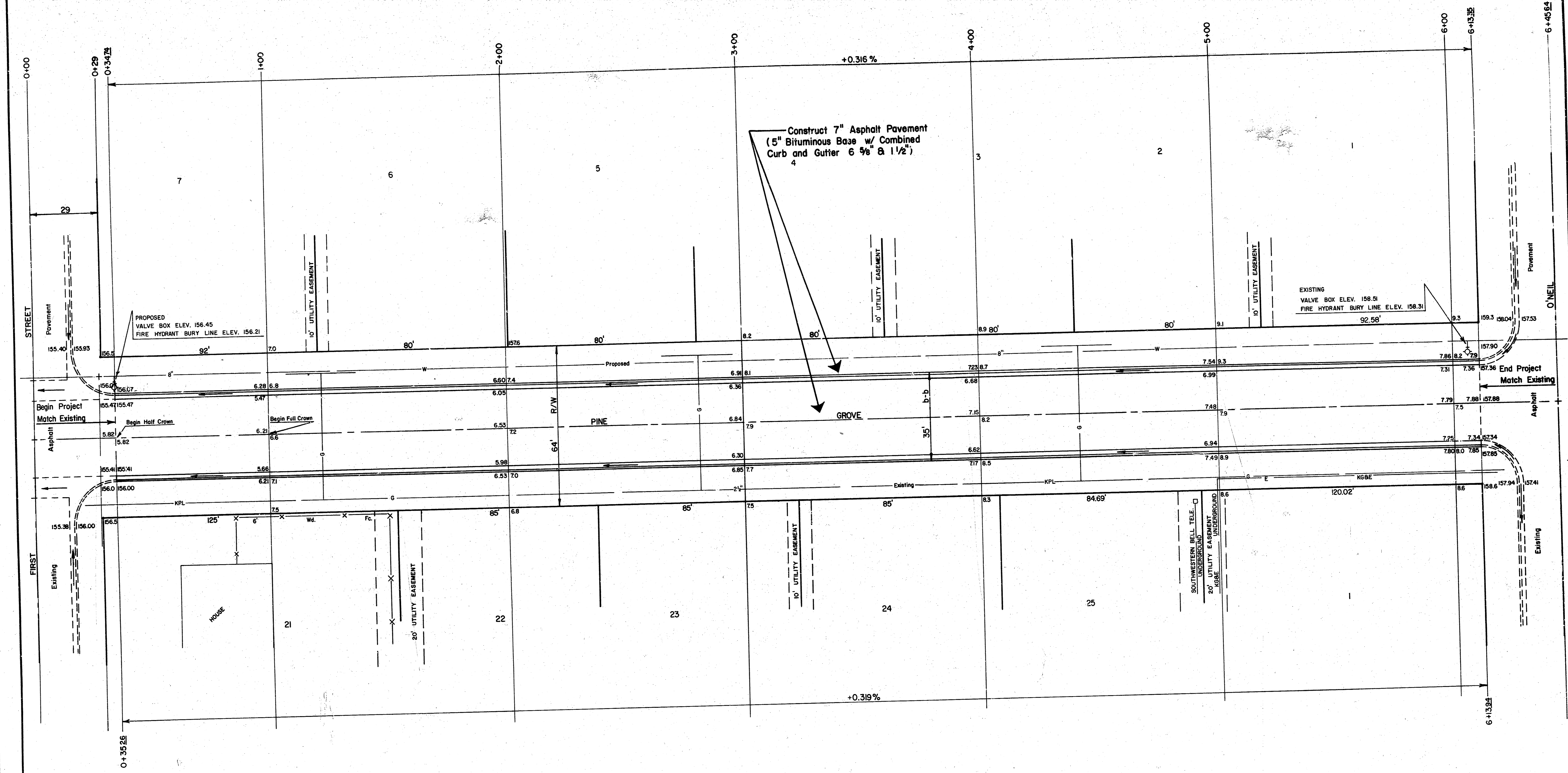


Scale: 1"=20'

EARTHWORK PLOTTER - J.M.K.

DRAFTSPERSON - J.M.K.

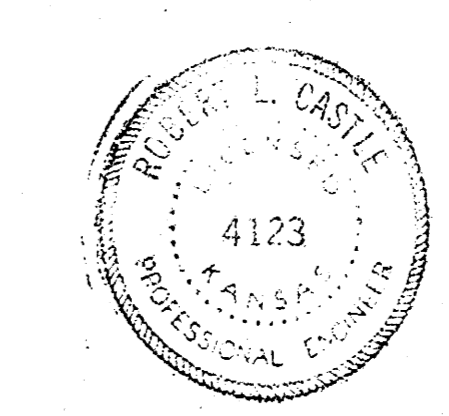
SURVEYOR - L.J.K.



- BM.1 "□" Cut on top of curb 18' east and 35' south of the C.C.'s of First Street and Pine Grove. Elev. 155.75
- BM.2 "□" Cut on top of curb 4' south and 18' west of the C.C.'s of Douglas and Millstead. Elev. 151.64
- BM.3 City of Wichita disc 40' east and 46' south of the L's of Central Avenue and 119TH Street west. Elev. 156.93

Excavation	1612.93 c.y.
+10%	161.29 c.y.
<b>Total</b>	<b>1774.22 c.y.</b>

Manipulation 2336 s.y.

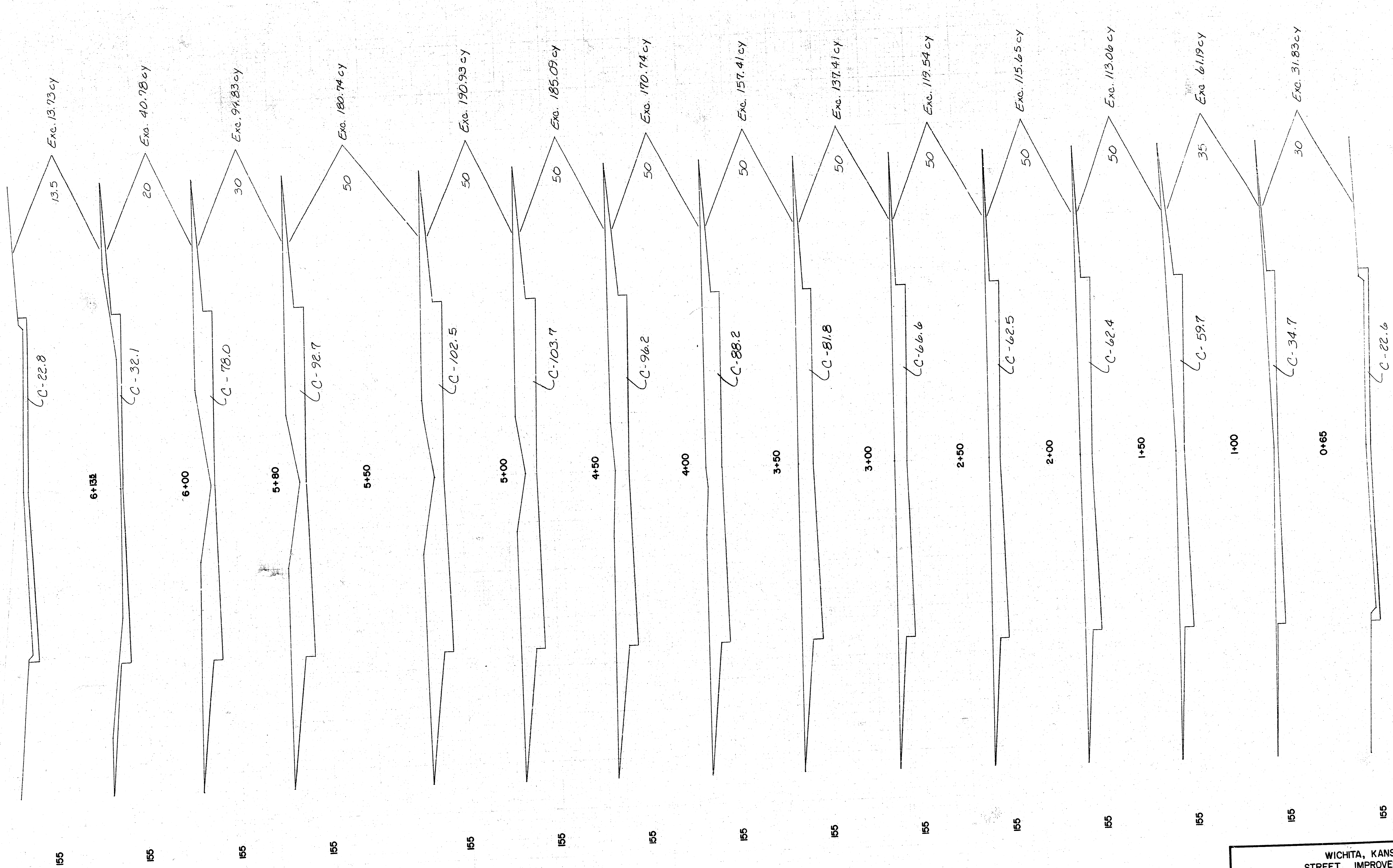


WICHITA, KANSAS STREET IMPROVEMENTS	
PLAN PINE GROVE PROJECT NO. 472-76-245-81662-000-000-001	
CASTLE & ASSOCIATES ENGINEERS WICHITA, KANSAS	DSG JMK DR JMK CH MES
	DWG FILE NO. 8735-D-80,073
DATE JULY 1987	APP RLC SHEET NO 3 OF 4 3/4

FILMED FROM THE BEST AVAILABLE COPY

8/15/87  
 JMK  
 JMK  
 7-2-87

8735



Sheet Total  
 1612.93 cy Excavation  
 1779.22 cy Excavation

WICHITA, KANSAS STREET IMPROVEMENTS			
CROSS SECTIONS PINE GROVE PROJECT NO. 472-76-245-81662-000-000-001			
CASTLE & ASSOCIATES ENGINEERS WICHITA, KANSAS	DSG JMK	DWG FILE NO. 8735-D-80,074	
	DR JMK CH MES	DATE JULY 1987	
APP RLC	SHEET NO. 4 OF 4		

FILMED FROM THE BEST  
 AVAILABLE COPY.....