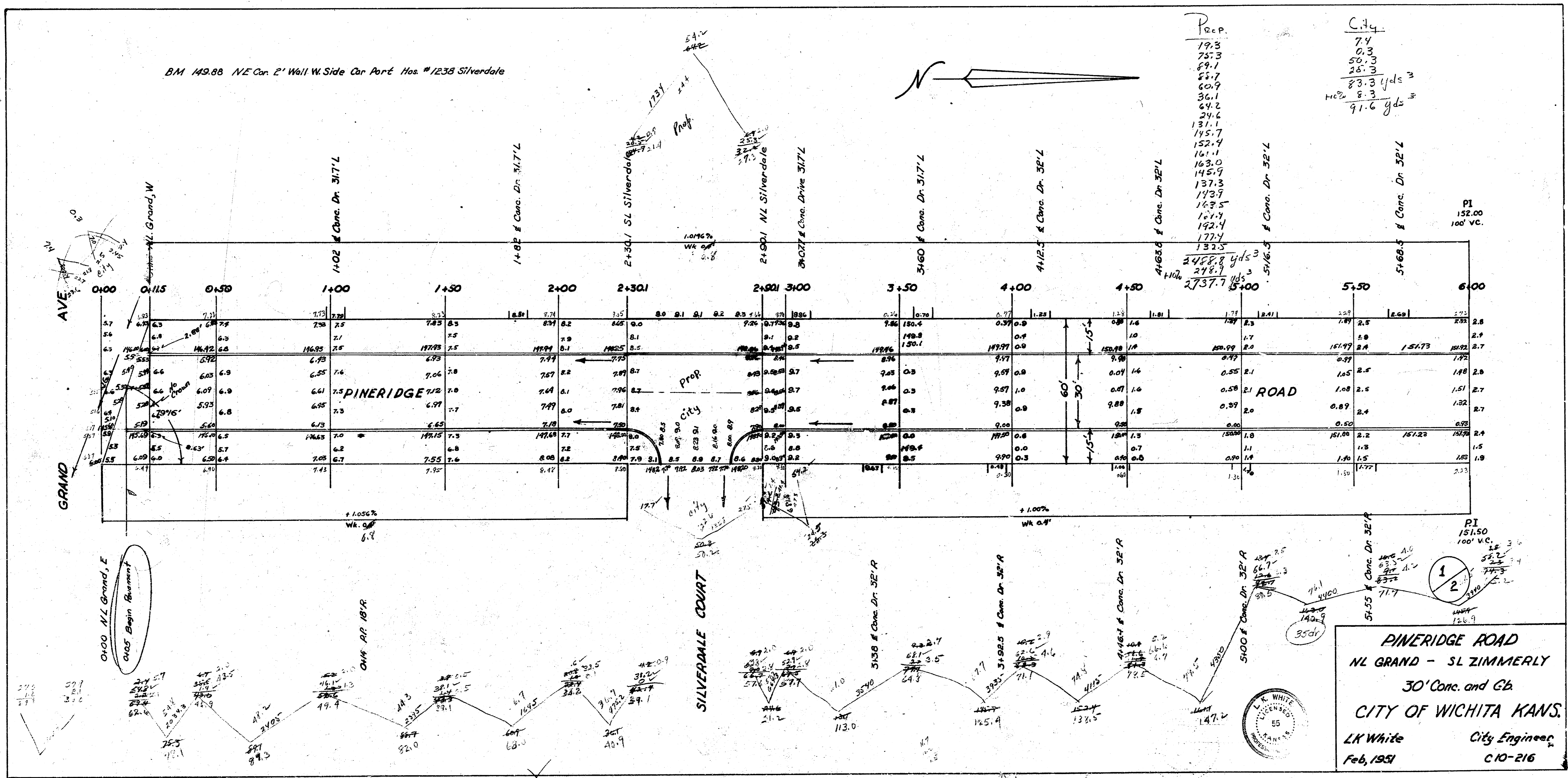


MG-5

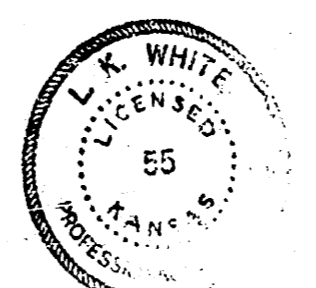
BM 149.88 NE Cor 2' Wall W. Side Car Port Nos #1238 Silverdale

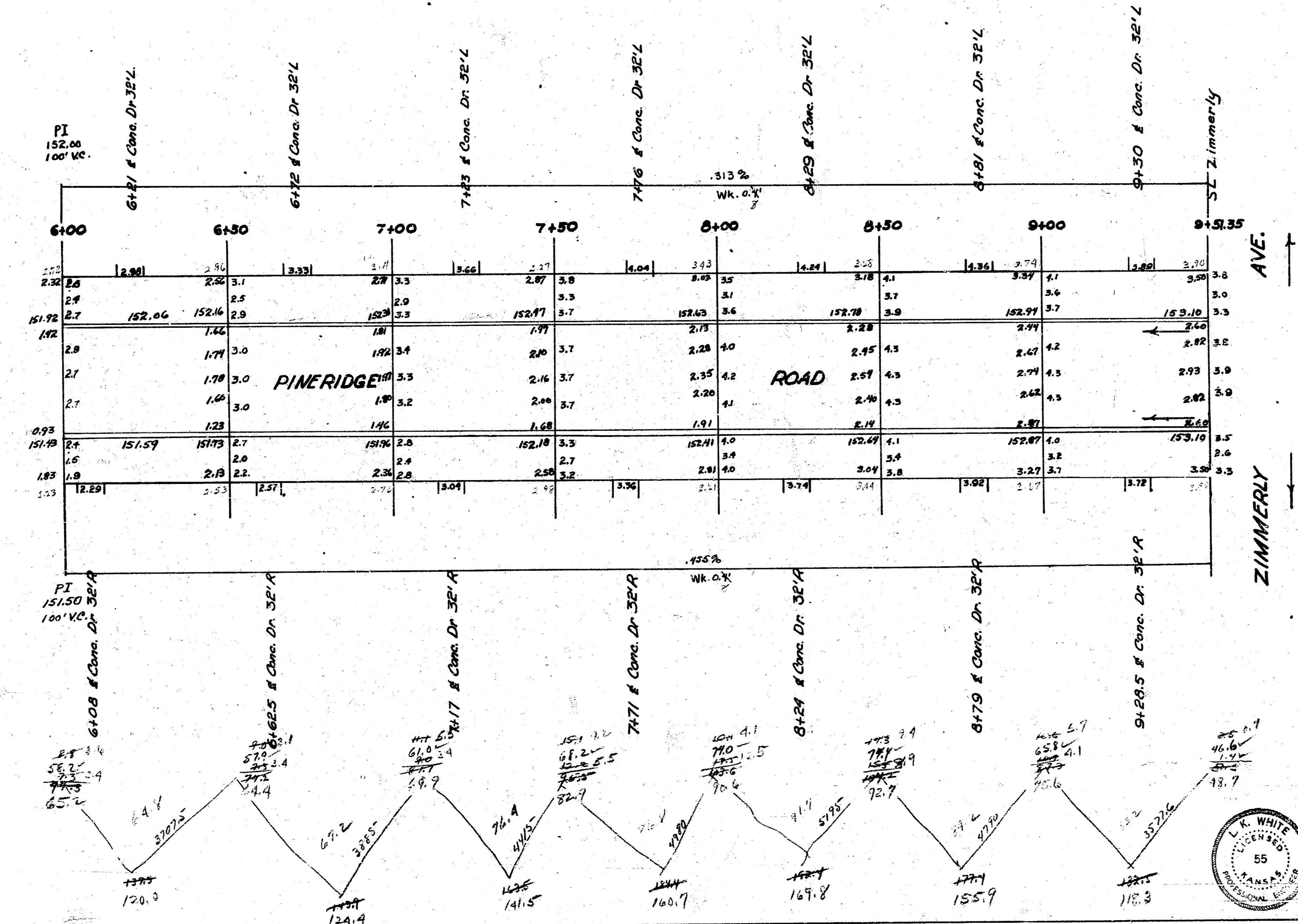
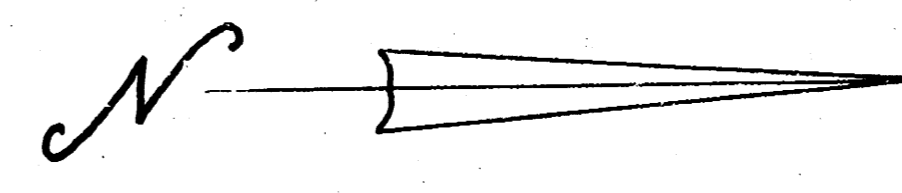


Rec.P.
 19.3
 73.3
 89.1
 87.7
 60.9
 36.1
 64.2
 24.2
 131.1
 145.7
 152.4
 161.1
 163.0
 145.9
 137.3
 113.9
 143.5
 161.4
 142.4
 172.4
 133.5

C.14
 7.4
 0.3
 50.3
 28.3
 88.3 yds
 91.6 yds

PINERIDGE ROAD
 NL GRAND - SL ZIMMERLY
 30' Conc. and Gb.
 CITY OF WICHITA KANS.
 LK White City Engineer
 Feb, 1951 C10-216





PINDERIDGE ROAD

2
2

4 3 4 54