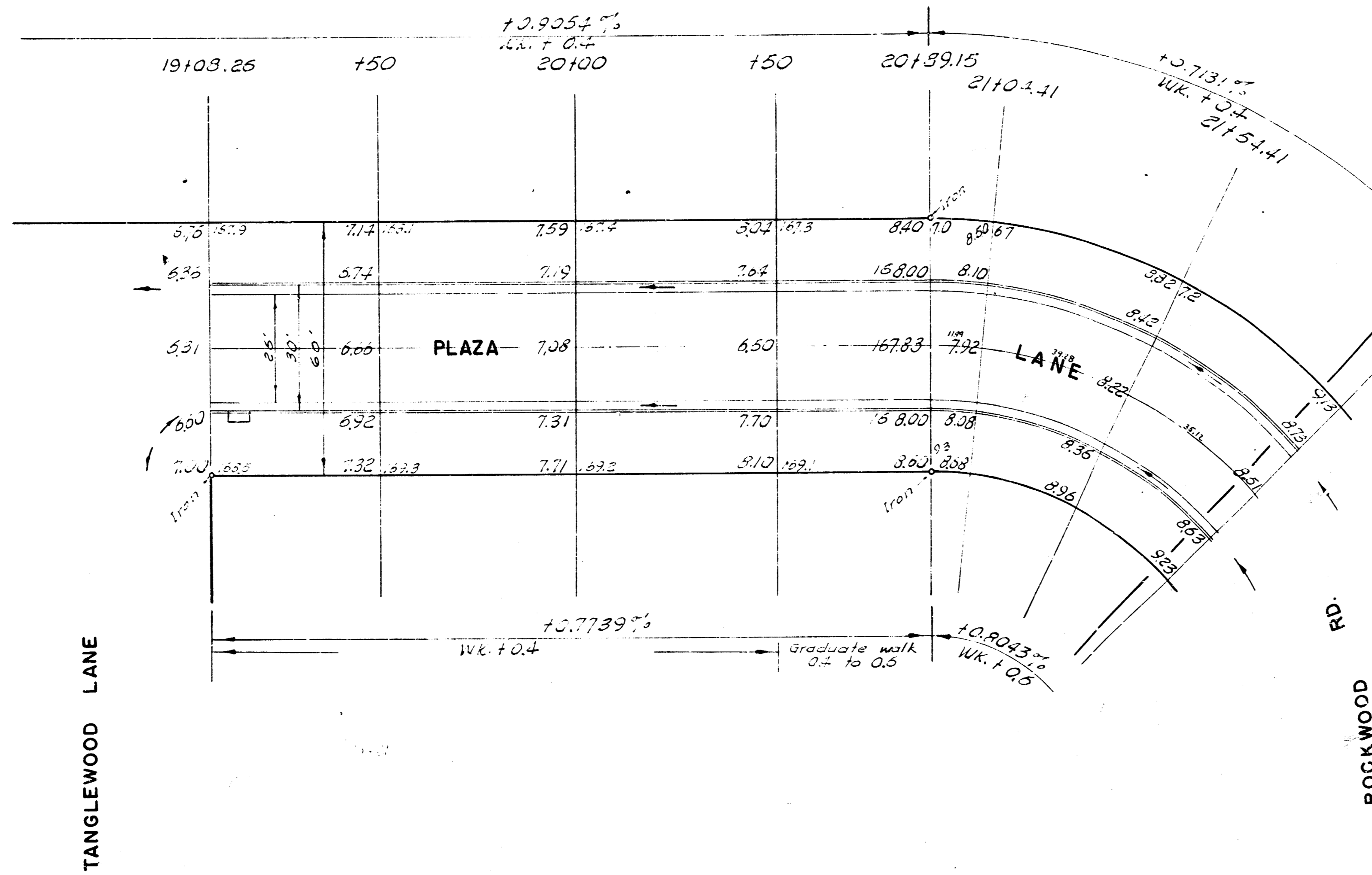


2. N. 175.12 Extreme Sit. con. Stone Slab on Woodlawn Village
 alignment on W. cont. Central of Tallyrand Road.



NOTE:
 See curve data on Rockwood Rd.
 Plan Post oak to Plaza Ln.
 Proj. No. 512-53.

1/2" = 20'
 1/4" = 10'
 1/8" = 5'
 1/16" = 2.5'

Prep.
 EXCAVATION
 6718
 672
 7390

PLAZA LANE
 SL ROCKWOOD RD. TO SL TANGLEWOOD LN.
 26' - 2' - 30' A. C.
 CITY OF WICHITA, KANSAS
 B. E. SMITH CITY ENGINEER
 OCT. 1962 PROJ. NO. C12-52

