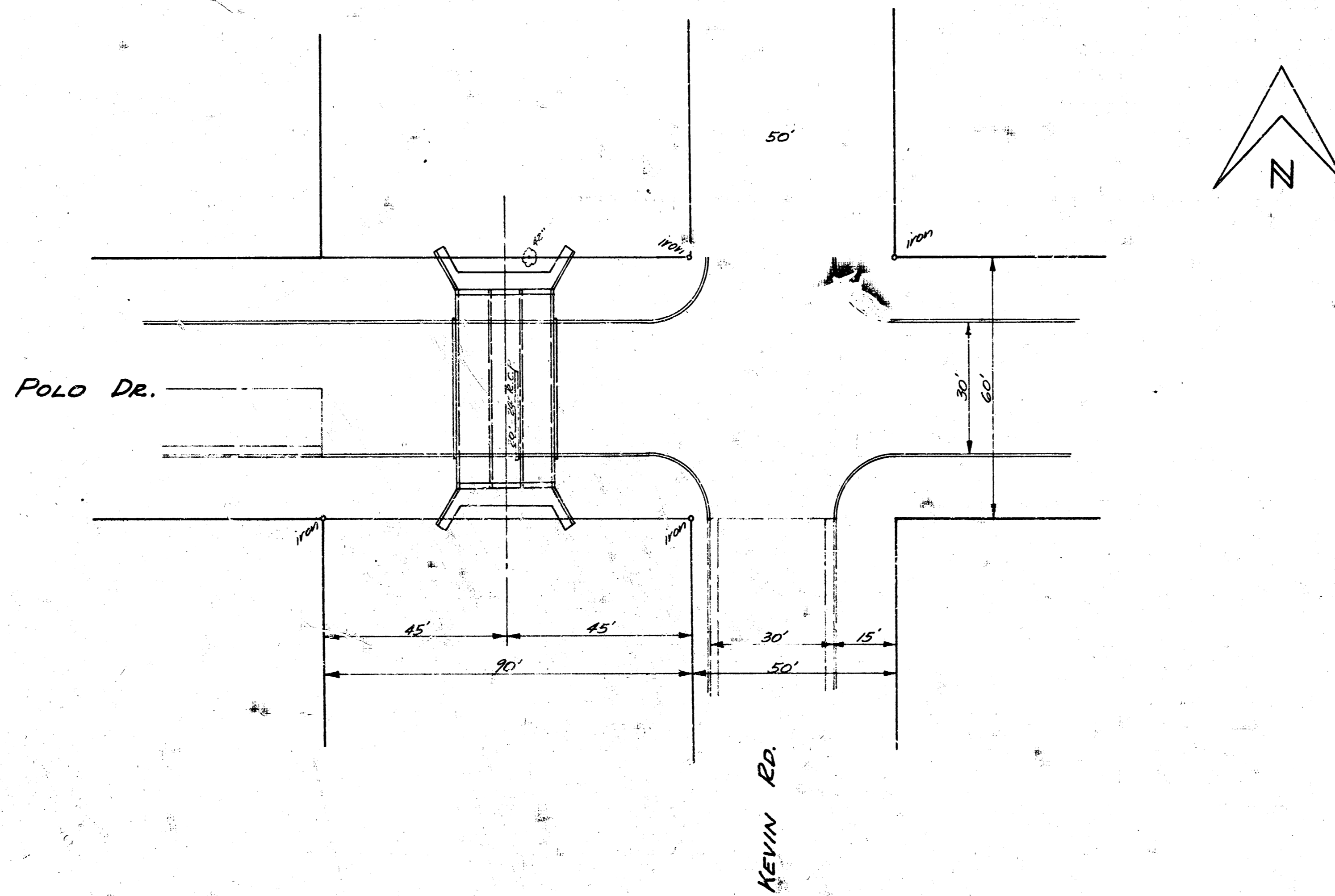


B.M. 19816 'R' in Ritchie W. Co. Kevin, S.L. Polo
Note: Use this B.M. of elevation only.

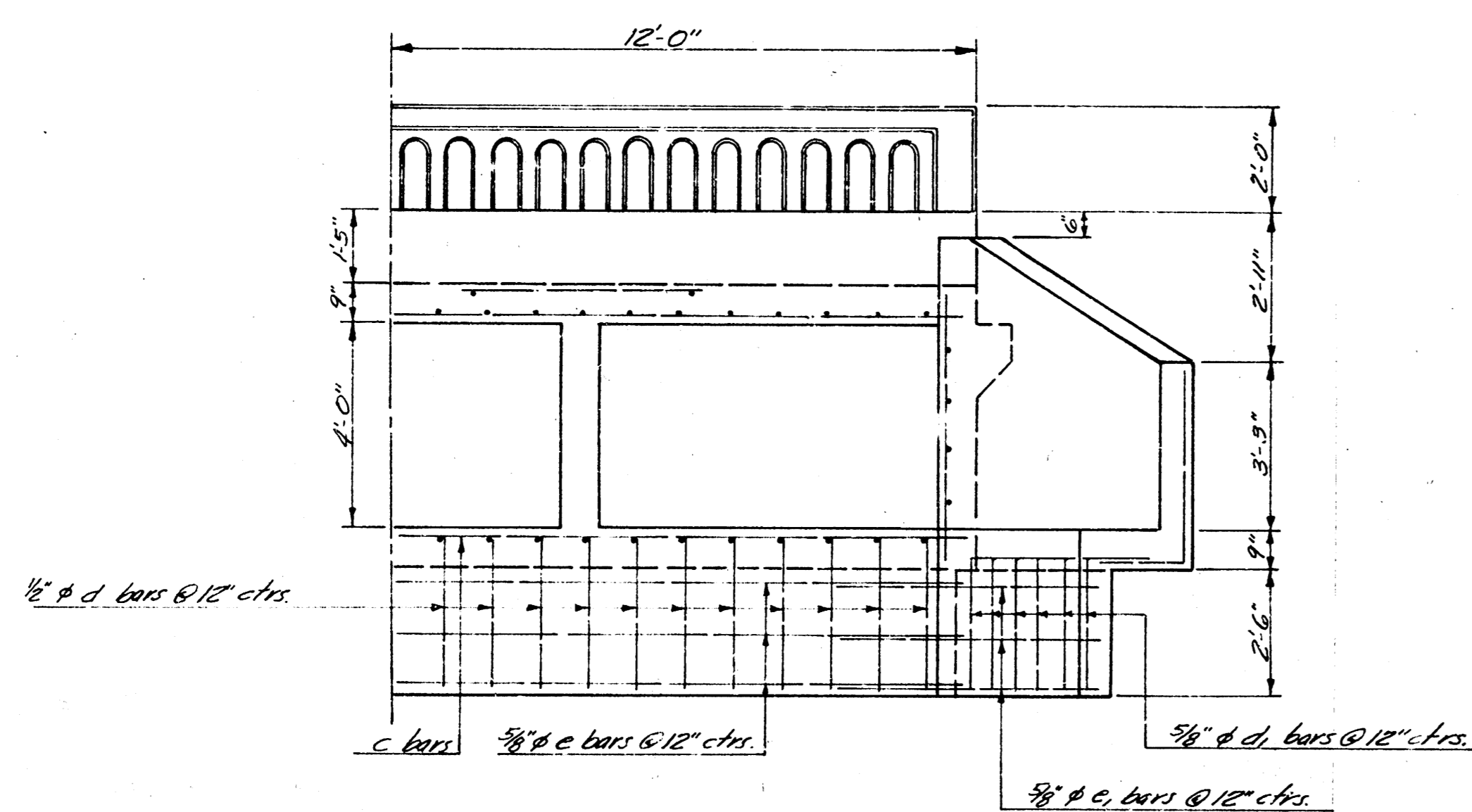
3 - 7' x 4' R.C.B.C. POLO DR. & DRYCREEK



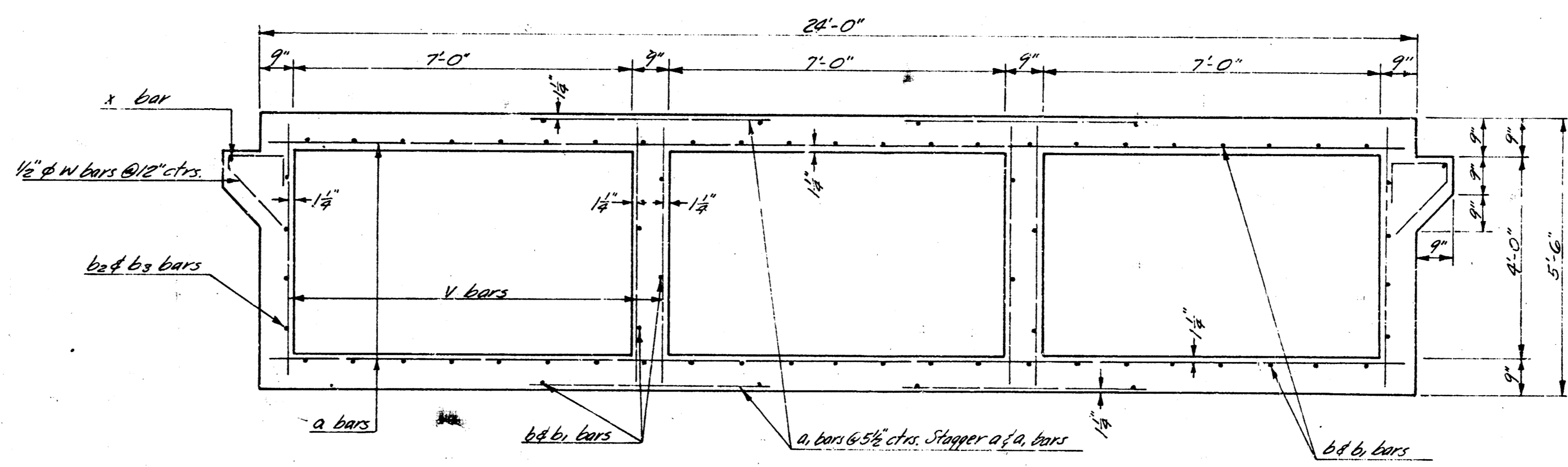
PLAN LAYOUT
Scale: 1" = 20'

INCIDENTAL DRAINAGE
POLO DRIVE, N 1/2
W.L. McEWEN 2ND ADD^{ON} to S.L. 11TH ST.
CITY OF WICHITA, KANSAS
B.E. SMITH - CITY ENGINEER
July, 1957 PROJ. No. C16-150

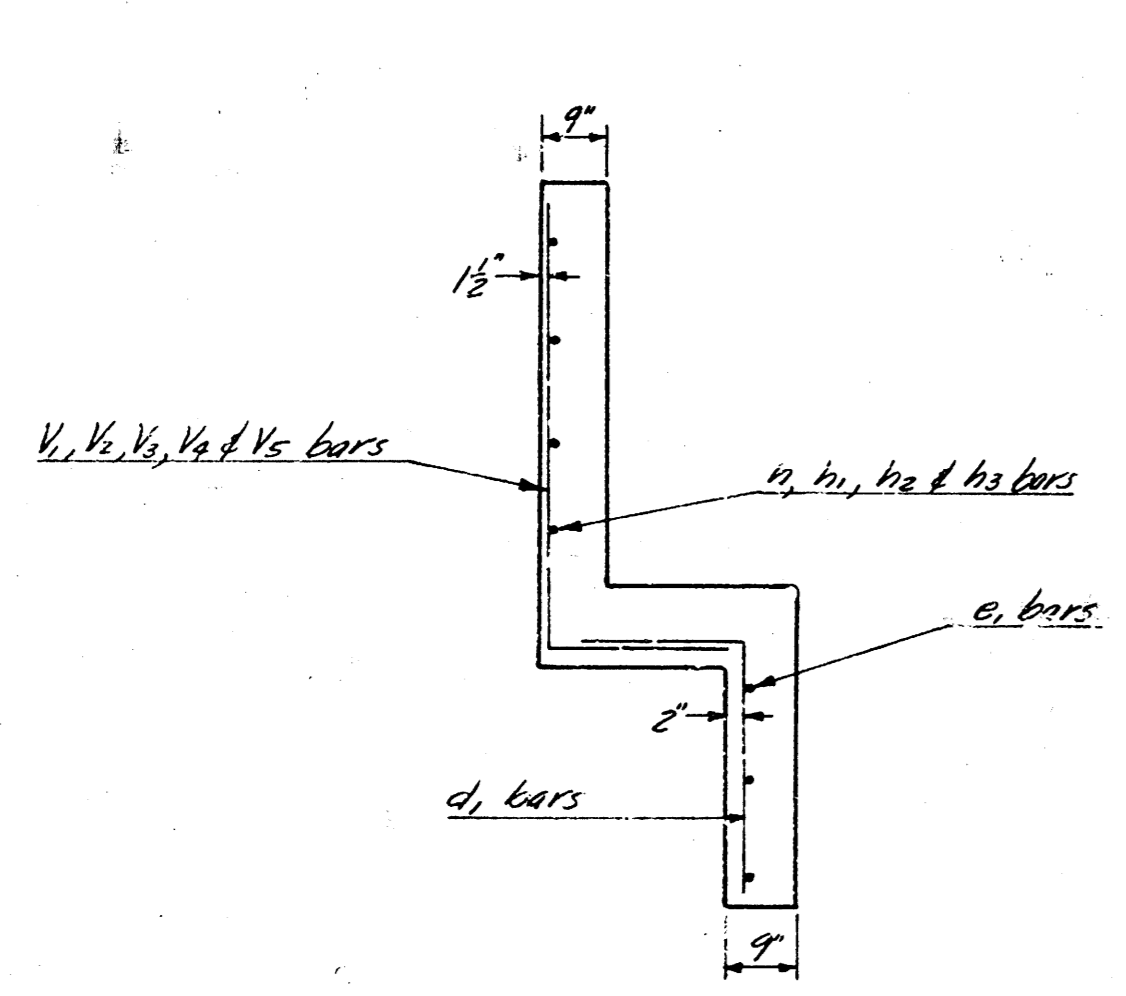
1/5



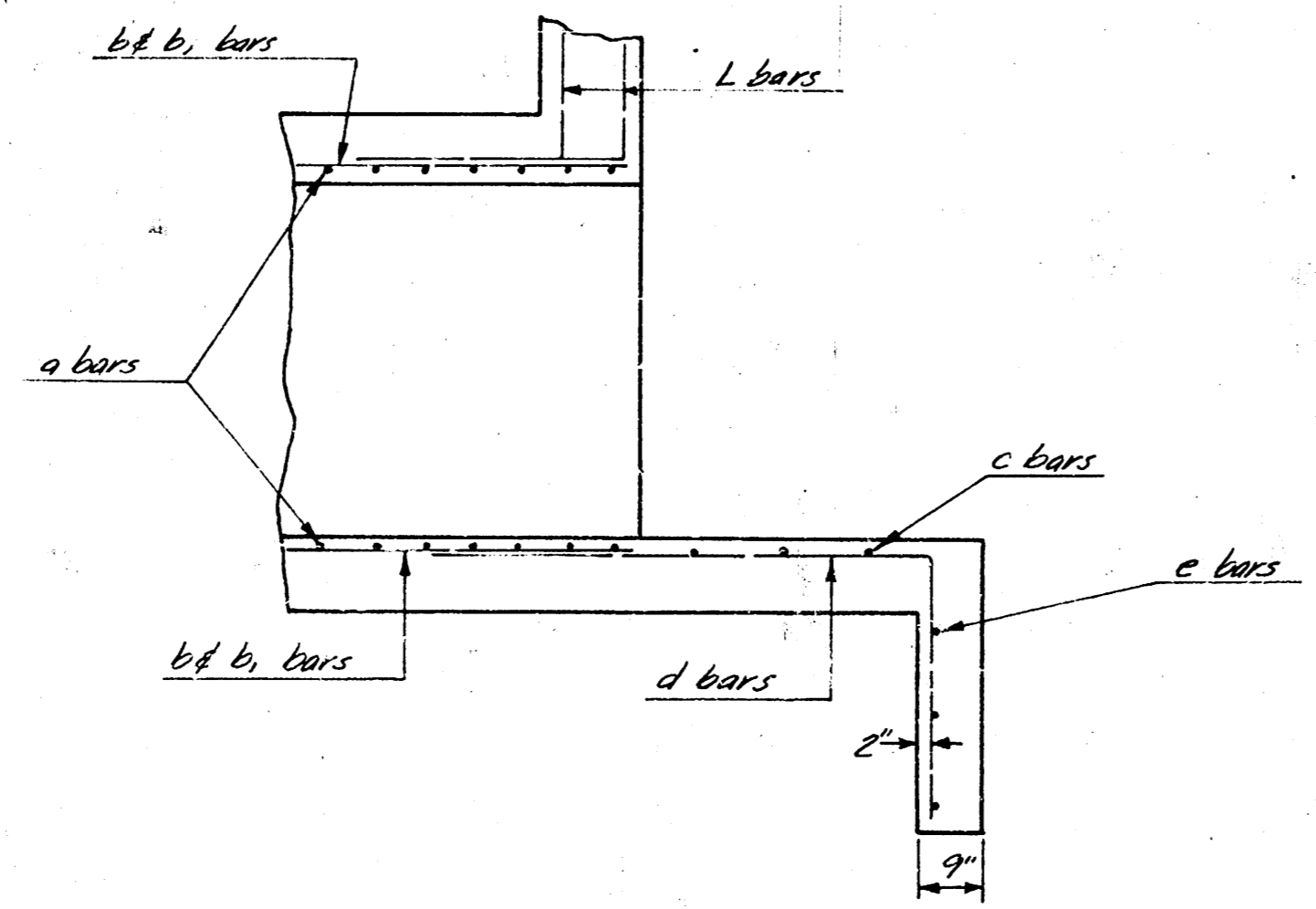
HALF END ELEVATION
Scale: 3/8" = 1'-0"



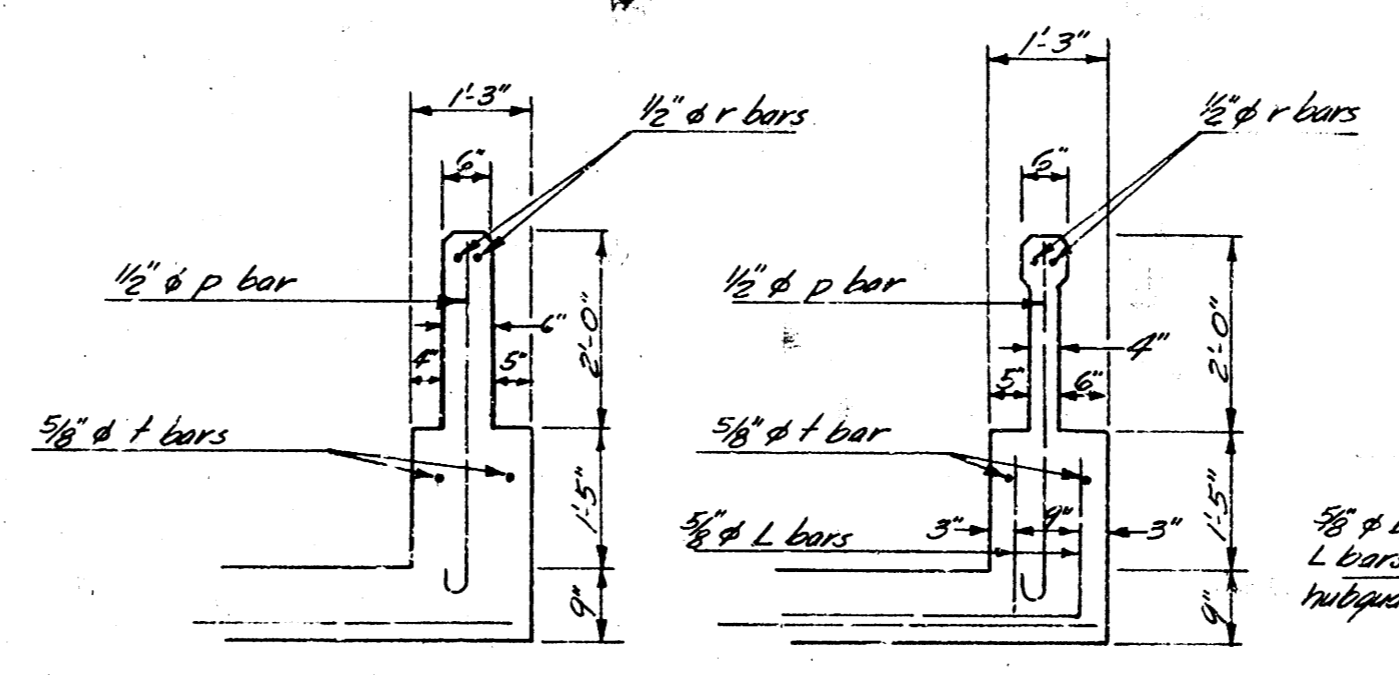
CROSS SECTION OF BOX
Scale: 1/2" = 1'-0"



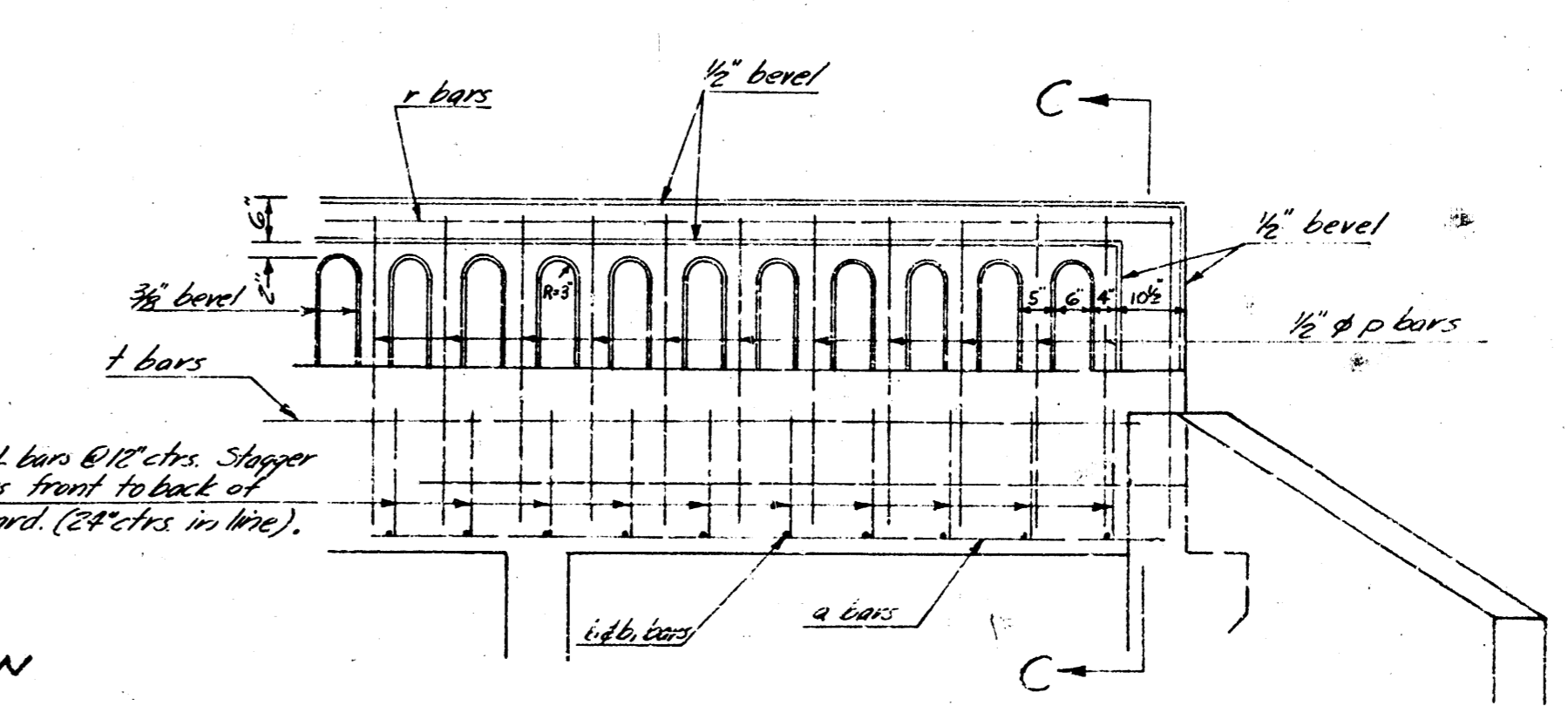
SECTION A-A
Scale: 1/2" = 1'-0"



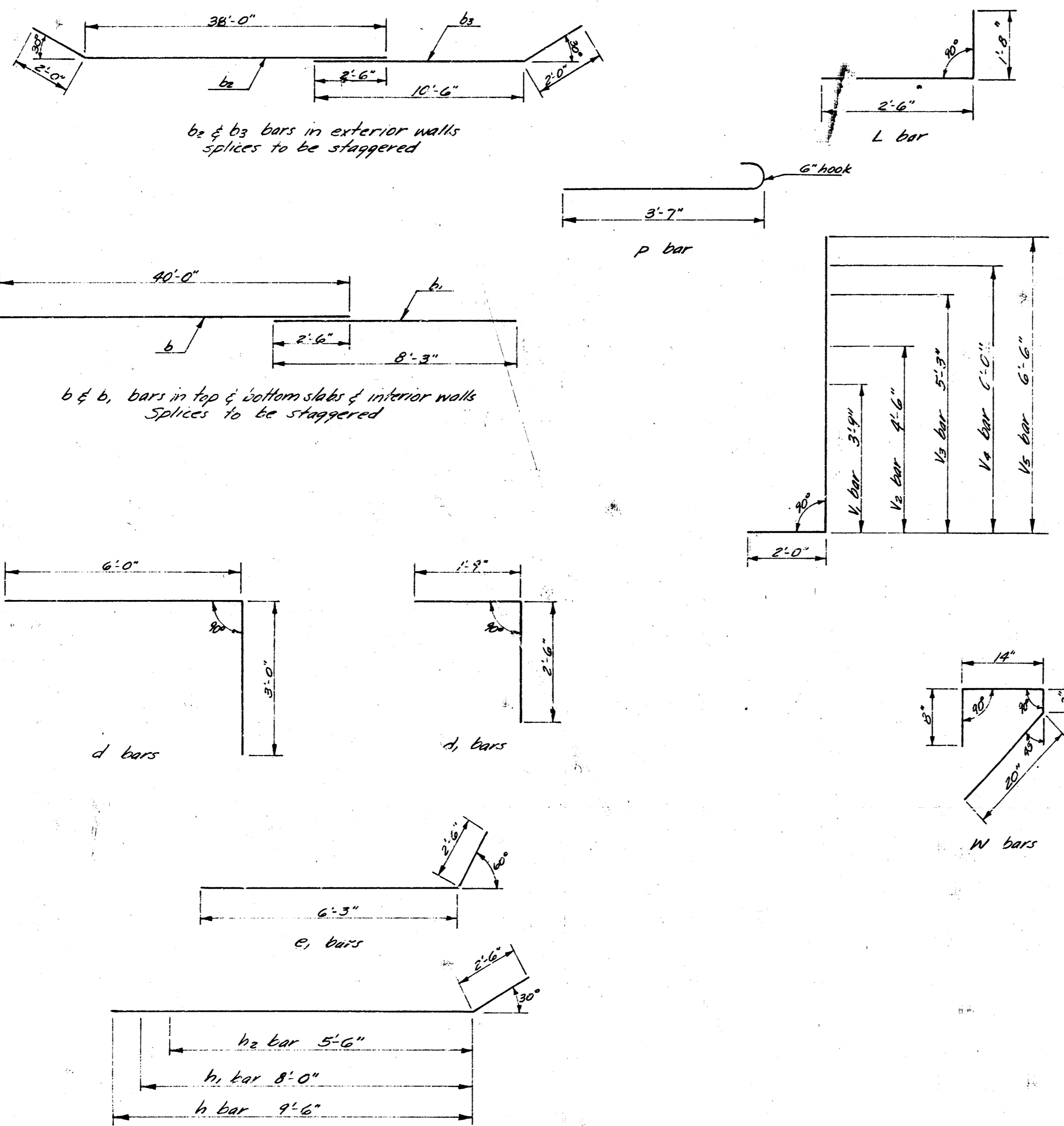
SECTION B-B
Scale: 1/2" = 1'-0"



SEC. C-C
POST & HUBGUARD SECTION
Scale: 1/2" = 1'-0"



PART ELEVATION - HANDRAIL & HUBGUARD
Scale: 1/2" = 1'-0"

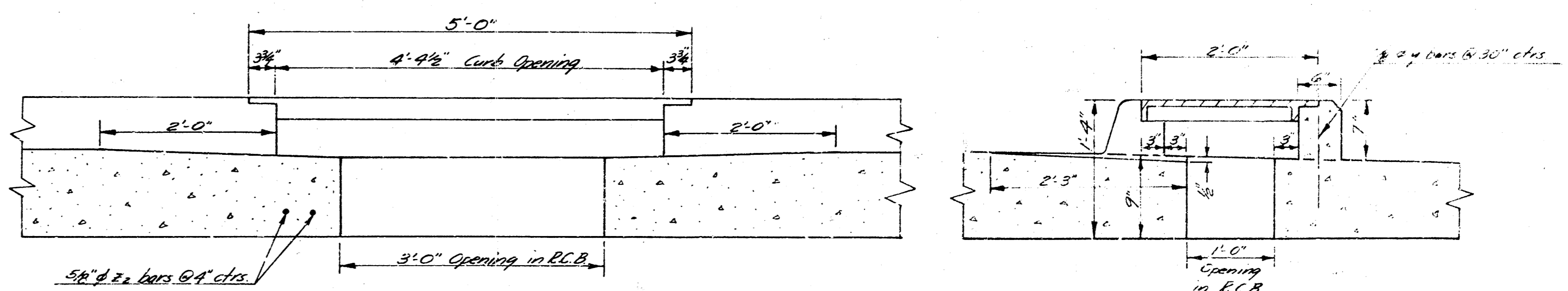


BAR BENDING DIAGRAMS
No Scale

STEEL SCHEDULE				
BAR	SIZE	No.	LENGTH	SHAPE
a	5/8"	200	23'-7"	
a1	5/8"	396	5'-0"	
b	1/2"	62	90'-0"	
b1	1/2"	62	8'-3"	
b2	1/2"	8	90'-0"	
c	5/8"	6	24'-0"	
d	1/2"	96	9'-0"	
d1	5/8"	24	4'-3"	
e	5/8"	6	23'-0"	
e1	5/8"	12	8'-9"	
h	1/2"	12	12'-0"	
h1	1/2"	4	10'-6"	
h2	1/2"	4	7'-6"	
L	5/8"	96	4'-2"	
P	1/2"	50	4'-1"	
r	1/2"	4	23'-8"	
s	1/2"	4	8'-6"	
t	5/8"	4	23'-6"	
v	5/8"	184	5'-2"	
v1	5/8"	8	5'-9"	
v2	5/8"	8	6'-3"	
v3	5/8"	8	7'-0"	
v4	5/8"	8	7'-6"	
v5	5/8"	8	8'-0"	
v6	5/8"	8	8'-6"	
v7	5/8"	8	9'-0"	
v8	5/8"	8	9'-6"	
v9	5/8"	8	10'-0"	
v10	5/8"	8	10'-6"	
v11	5/8"	8	11'-0"	
v12	5/8"	8	11'-6"	
v13	5/8"	8	12'-0"	
v14	5/8"	8	12'-6"	
v15	5/8"	8	13'-0"	
v16	5/8"	8	13'-6"	
v17	5/8"	8	14'-0"	
v18	5/8"	8	14'-6"	
v19	5/8"	8	15'-0"	
v20	5/8"	8	15'-6"	
v21	5/8"	8	16'-0"	
v22	5/8"	8	16'-6"	
v23	5/8"	8	17'-0"	
v24	5/8"	8	17'-6"	
v25	5/8"	8	18'-0"	
v26	5/8"	8	18'-6"	
v27	5/8"	8	19'-0"	
v28	5/8"	8	19'-6"	
v29	5/8"	8	20'-0"	
v30	5/8"	8	20'-6"	
v31	5/8"	8	21'-0"	
v32	5/8"	8	21'-6"	
v33	5/8"	8	22'-0"	
v34	5/8"	8	22'-6"	
v35	5/8"	8	23'-0"	
v36	5/8"	8	23'-6"	
v37	5/8"	8	24'-0"	
v38	5/8"	8	24'-6"	
v39	5/8"	8	25'-0"	
v40	5/8"	8	25'-6"	
v41	5/8"	8	26'-0"	
v42	5/8"	8	26'-6"	
v43	5/8"	8	27'-0"	
v44	5/8"	8	27'-6"	
v45	5/8"	8	28'-0"	
v46	5/8"	8	28'-6"	
v47	5/8"	8	29'-0"	
v48	5/8"	8	29'-6"	
v49	5/8"	8	30'-0"	
v50	5/8"	8	30'-6"	
v51	5/8"	8	31'-0"	
v52	5/8"	8	31'-6"	
v53	5/8"	8	32'-0"	
v54	5/8"	8	32'-6"	
v55	5/8"	8	33'-0"	
v56	5/8"	8	33'-6"	
v57	5/8"	8	34'-0"	
v58	5/8"	8	34'-6"	
v59	5/8"	8	35'-0"	
v60	5/8"	8	35'-6"	
v61	5/8"	8	36'-0"	
v62	5/8"	8	36'-6"	
v63	5/8"	8	37'-0"	
v64	5/8"	8	37'-6"	
v65	5/8"	8	38'-0"	
v66	5/8"	8	38'-6"	
v67	5/8"	8	39'-0"	
v68	5/8"	8	39'-6"	
v69	5/8"	8	40'-0"	
v70	5/8"	8	40'-6"	
v71	5/8"	8	41'-0"	
v72	5/8"	8	41'-6"	
v73	5/8"	8	42'-0"	
v74	5/8"	8	42'-6"	
v75	5/8"	8	43'-0"	
v76	5/8"	8	43'-6"	
v77	5/8"	8	44'-0"	
v78	5/8"	8	44'-6"	
v79	5/8"	8	45'-0"	
v80	5/8"	8	45'-6"	
v81	5/8"	8	46'-0"	
v82	5/8"	8	46'-6"	
v83	5/8"	8	47'-0"	
v84	5/8"	8	47'-6"	
v85	5/8"	8	48'-0"	
v86	5/8"	8	48'-6"	
v87	5/8"	8	49'-0"	
v88	5/8"	8	49'-6"	
v89	5/8"	8	50'-0"	
v90	5/8"	8	50'-6"	
v91	5/8"	8	51'-0"	
v92	5/8"	8	51'-6"	
v93	5/8"	8	52'-0"	
v94	5/8"	8	52'-6"	
v95	5/8"	8	53'-0"	
v96	5/8"	8	53'-6"	
v97	5/8"	8	54'-0"	
v98	5/8"	8	54'-6"	
v99	5/8"	8	55'-0"	
v100	5/8"	8	55'-6"	

BILL OF MATERIALS		
ITEM	QUANTITY	UNITS
Class A-AC Concrete	12.1	Cu Yds
Reinforcing Steel	12,065	Lbs
Handrail	98.0	lin ft
General Excavation	36.0	Cu Yds
Hand Excavation	5	Cu Yds
Compacted Backfill	6.0	Cu Yds
Integral curb	72.0	lin ft
Catch basin lid, 2'x5'	6	each
4" Sidewalk	234.0	sq ft
Pipe removed	20	lin ft
Large tree removed	1	each

General Notes:
 Compacted backfill to be carried to original ground elevation. Backfill is to be sand stabilized and mechanically tamped.
 Excavation is to be extended 2' beyond sides of the box & back of wingwalls.
 Bevel all exposed edges with 3/4" mauling unless otherwise noted.
 4" Sidewalk to cover entire area between int curb & outguard. Bid price of walk to include sand fill between top of box & bottom of walk. Cast of expansion joint between walk & int curb to be included in walk bid.

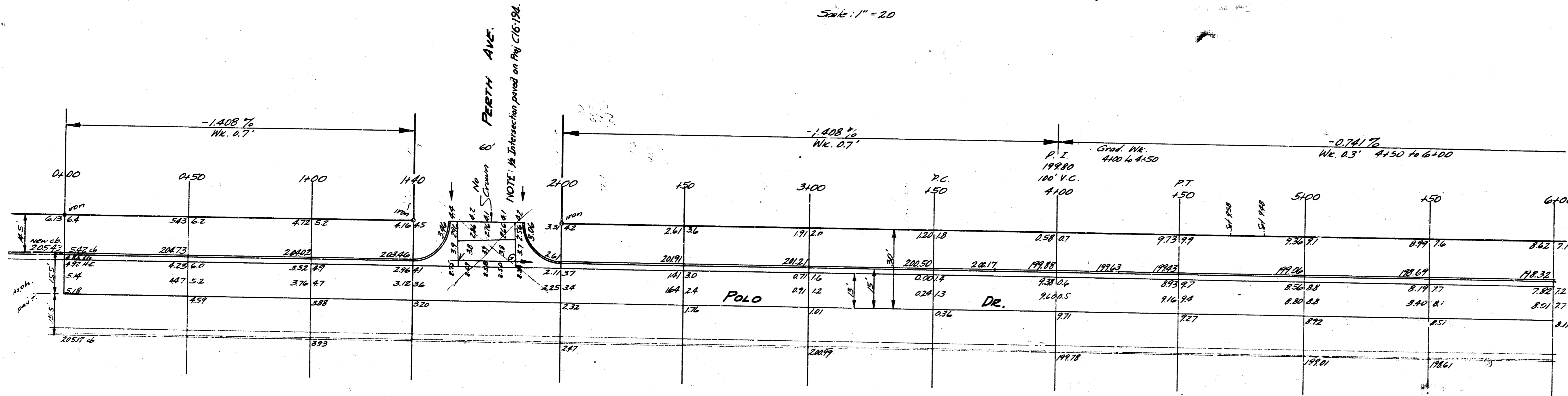


SECTIONS THRU CATCH BASINS
Scale: 1"=1'-0"

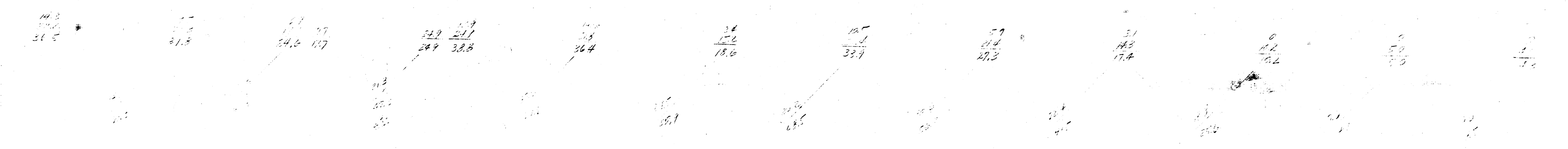
See note on Sheet #2 about B.M. discrepancy.
 B.M. 1205.17 E. in Ritchie, S. of Polo Dr., W.L. McEwen 2nd Addn.



Handwritten notes in the upper right corner, including '1/2\"/>



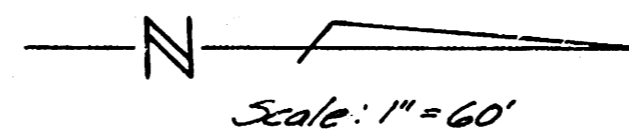
PERRY AVE.
 NOTE: In Intersection point on P.C. 0+194.



POLO DR.
 N 1/2, W.L. McEwen 2nd Addn. to S.L. 11th
 S 1/2, E.L. Lot 1, Blk. 1, McEwen 2nd Addn. to
 W.L. 11th St.
 13-2-15 A.C.
 CITY OF WICHITA, KANSAS
 B. E. SMITH - CITY ENGINEER
 AUG 1957 Proj. No. C15-240 & C16-150

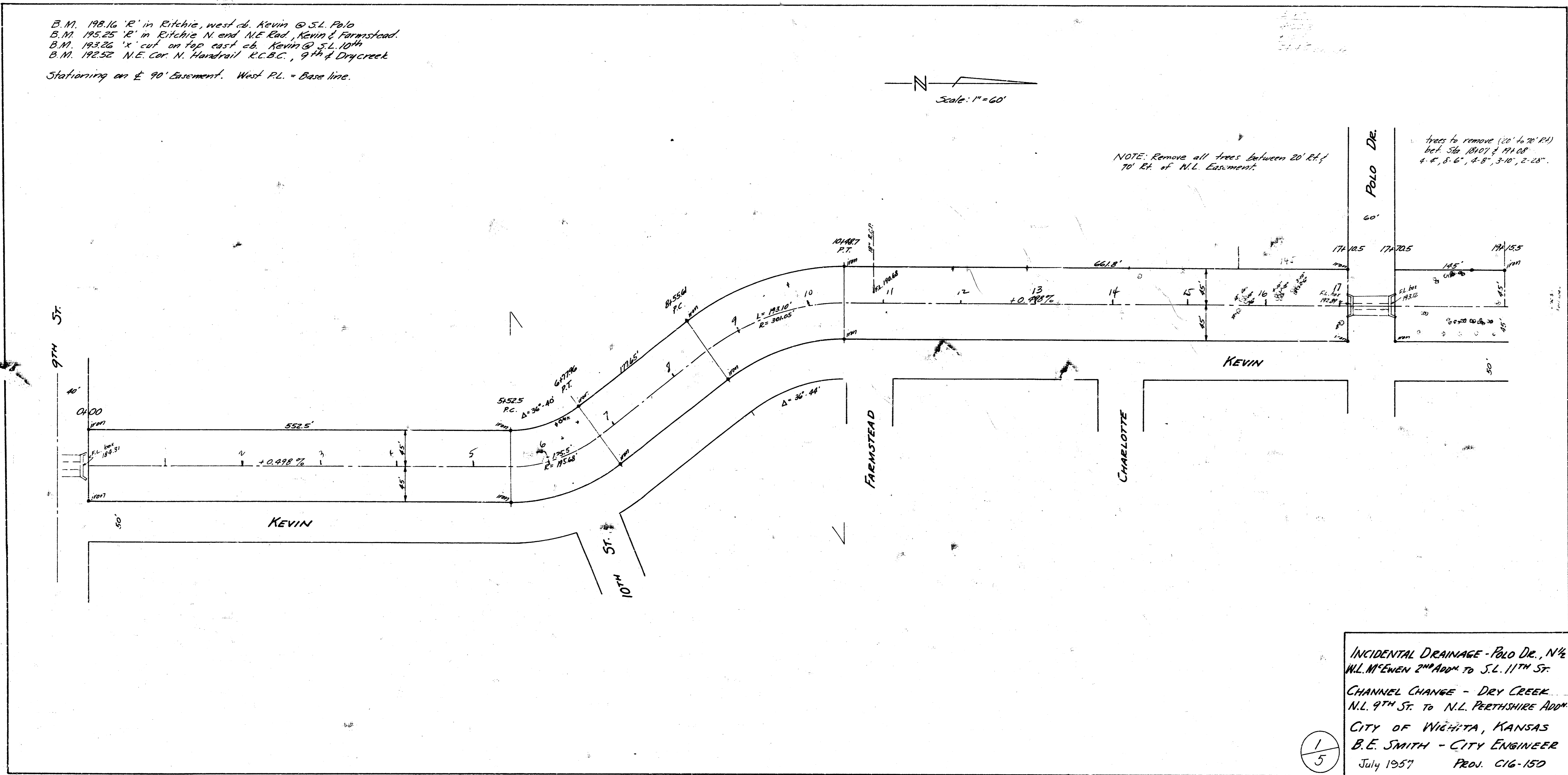
1
2

B.M. 198.16 'E' in ditch, west of Kevin @ S.L. Polo
 B.M. 195.25 'E' in ditch, N end N.E. Rad, Kevin & Farmstead.
 B.M. 193.26 'X' cut on top east of Kevin @ S.L. 10th
 B.M. 192.52 N.E. cor. N. Handrail R.C.B.C., 9th & Drycreek.
 Stationing on E 90' Easement. West P.L. = Base line.



NOTE: Remove all trees between 20' R.H. of N.L. Easement.

Trees to remove (20' L.H. of P.L.)
 bet. Sta. 18107 & 19108
 4-8', 5-6', 4-8', 3-10', 2-12'



INCIDENTAL DRAINAGE - Polo Dr., N 1/2
 W.L. McEWEN 2" ADDN TO S.L. 11TH ST.
 CHANNEL CHANGE - DRY CREEK
 N.L. 9TH ST. TO N.L. PERTSHIRE ADDN
 CITY OF WICHITA, KANSAS
 B.E. SMITH - CITY ENGINEER
 July 1957 PROJ. C16-150

1/5