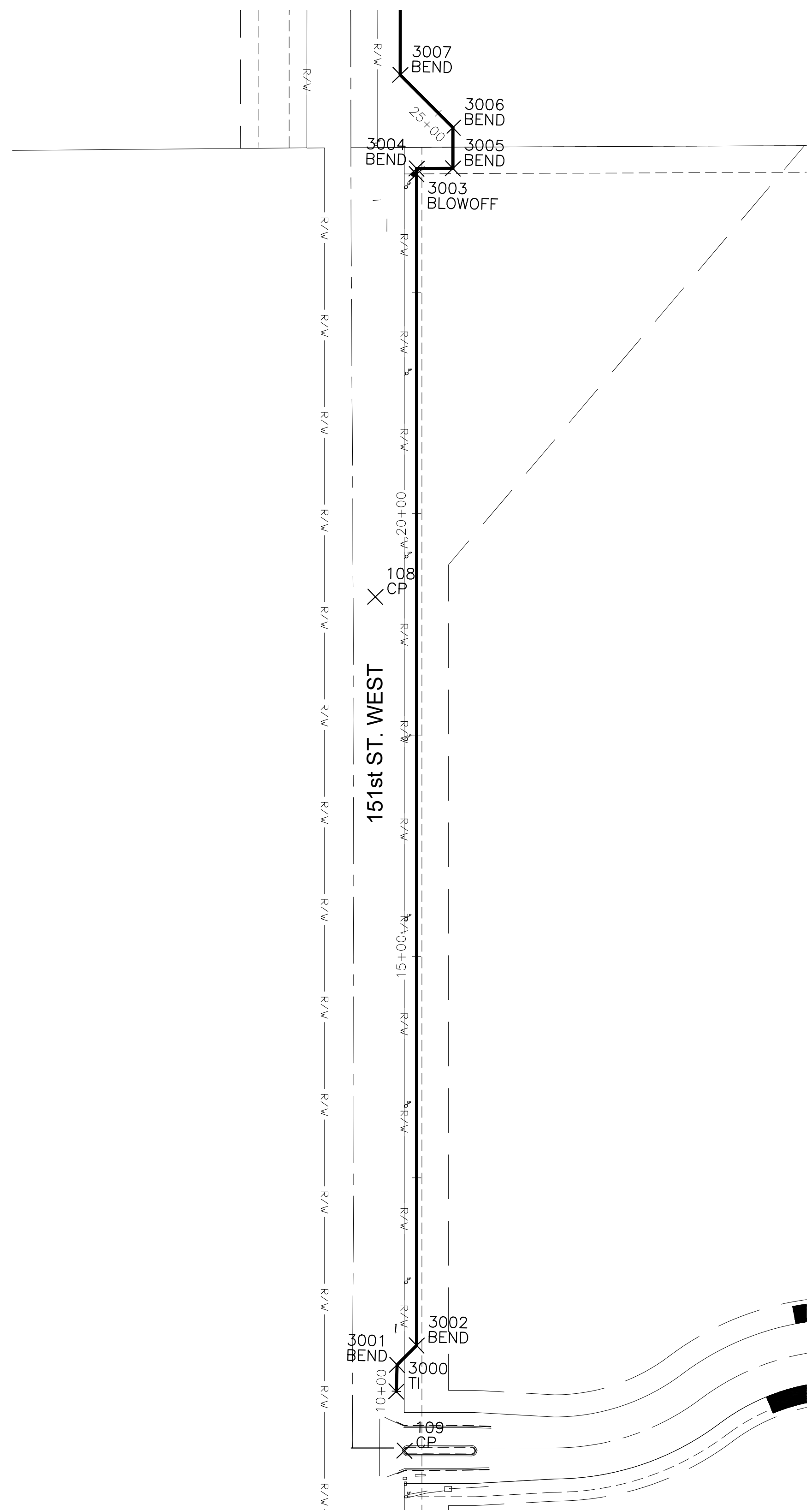


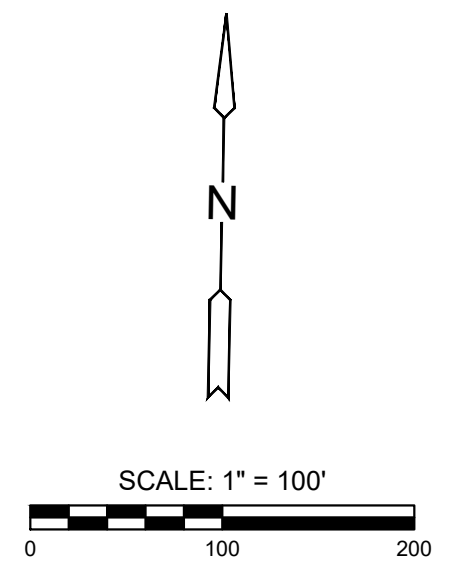
PLOTTED: Monday, July 26, 2020 @ 09:44AM

J:\PROJECTS\2020\121010875\_COW\_WM\_EXT\_FOR\_VIA\_CHRISTI\_ST\_THR (US)100\_210875\_CAD\SHRINK\_CIVIL\WTRC1675-AS-3000.DWG



CONTROL POINTS			
Point #	Northing	Easting	Desc.
108	1700386.22	1596794.25	CP
109	1699422.87	1596848.19	CP

WATER POINTS			
Point #	Northing	Easting	Desc.
3000	1699489.58	1596837.48	TI
3001	1699519.58	1596837.69	BEND
3002	1699542.08	1596859.22	BEND
3003	1700864.37	1596830.38	BLOWOFF
3004	1700870.75	1596830.26	BEND
3005	1700871.82	1596871.25	BEND
3006	1700917.93	1596870.25	BEND
3007	1700976.07	1596809.51	BEND



EVERY ATTEMPT HAS BEEN MADE TO INSURE ALL COORDINATE VALUES SHOWN ARE AN ACCURATE AND TRUE REPRESENTATION OF THE CURRENT PLANS. ALL VALUES ARE TO BE CONFIRMED WITH THE FINAL SIGNED PLAN SET BEFORE USE.



WATER EXTENSION PLANS FOR  
**ASCENSION VIA CHRISTI ST TERESA**  
WICHITA, KS

BUBBLE MAP  
(1 OF 4)

PROJECT NO.  
448-2020-033964

SCALE  
1" = 100'

DRAWN	DESIGNED	CHECKED
AJK	AJK	DFL

NO.	REVISION	DATE
0	ISSUED FOR CONSTRUCTION	07/28/20

SHEET NO.  
**CU114-W**  
14 OF 24

©2020 MKEC ENGINEERING, INC. ALL RIGHTS RESERVED WWW.MKEC.COM THESE DRAWINGS AND THEIR CONTENTS, INCLUDING, BUT NOT LIMITED TO, ALL CONCEPTS, DESIGNS, & DETAILS ARE THE EXCLUSIVE PROPERTY OF MKEC ENGINEERING, INC. (MKEC), AND MAY NOT BE USED OR REPRODUCED IN ANY WAY WITHOUT THE EXPRESS CONSENT OF MKEC.